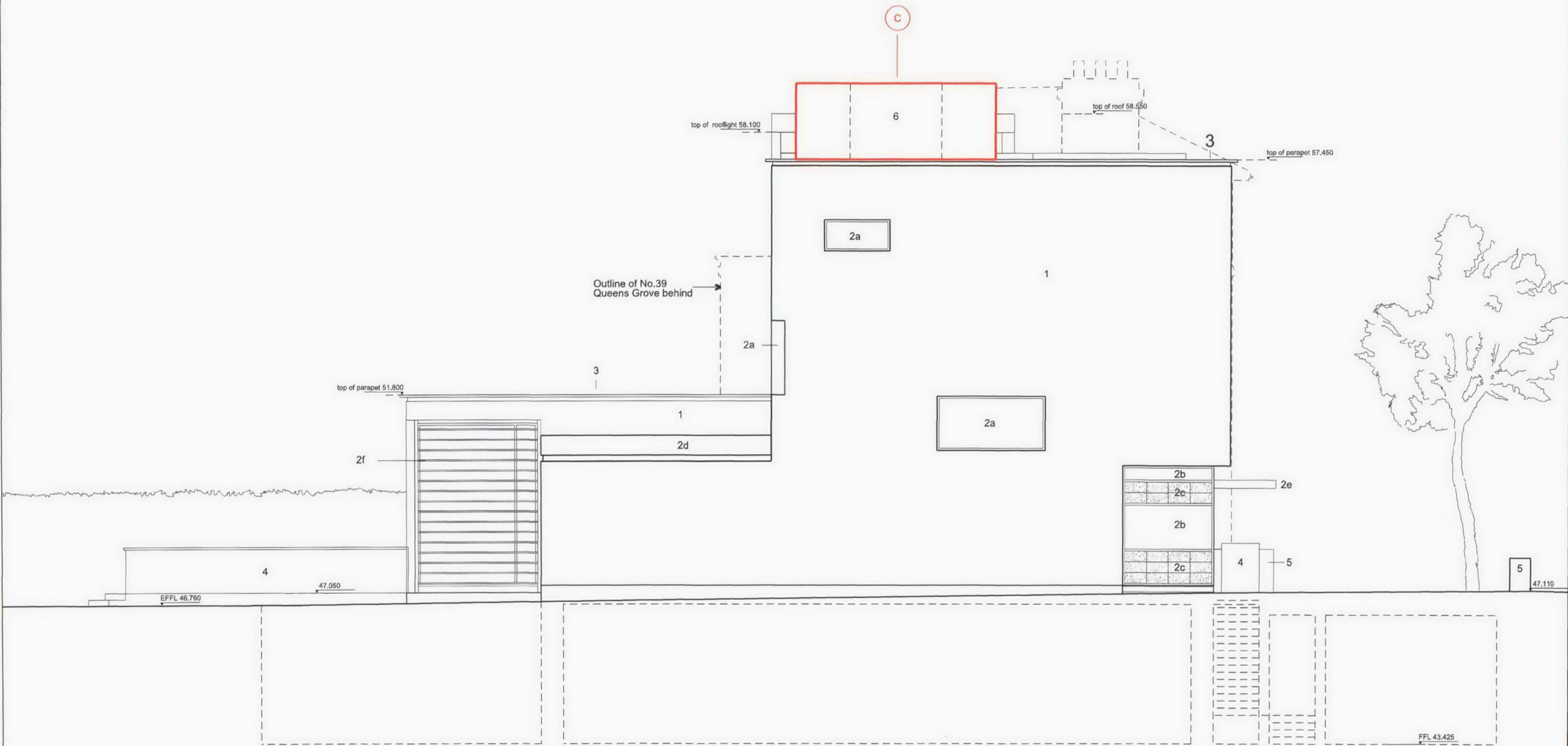


PLANNING



Design Amendments

C Introduction of roof top air source heating and cooling installation in lieu of the combined ground source and heat rejection units at application. The form of the louvred enclosure is curved so it diminishes in street and garden views and is about the same height as the chimneys of the neighbouring villas.

Materials Key

- 1 Render finish
- 2a Fixed double glazed window
- 2b Triple glazed side hung inward opening casement window behind fixed vented flush single glazed rainscreen
- 2c External grade venetian blinds to cavity
- 2d Glazed porcelain panelling / rainscreen
- 2e Flush painted metal panel / upstand to roof edge
- 2f Painted metal canopy with lighting
- 2g Painted rectangular section extruded aluminium louvre blades in front of glazing as 2a
- 2h Double glazed side hung inward opening casement window behind fixed vented flush single glazed rainscreen
- 3 External grade venetian blinds to cavity
- 4 Folded aluminium coping
- 5 Laminated glass balustrades
- 6 Rendered wall to forecourt
- 7 Louvred roof enclosure

General Key

- 1 Wall Finish

Smooth render 'Stucco' finish to built up insulated wall system System to be designed to avoid movement and day joints

- 2 Glazing and Porcelain panelling

Translucent and / or clear glass to structurally glazed system Glazed porcelain panels as rainscreen or insulated cassette (tbc) Glazing to be low iron, low e neutral solar control glass. Painted finish to aluminium

- 3 Copings and cills

Painted folded aluminium copings - min. 2mm shadow / rebate detail with concealed fixings and back drained to roof Painted aluminium louvred roof enclosure

Rev	Description	Date	By	Client	Scale	1: 100	drawn by	ZF
P5	Issue to DP9	24.03.10		Queen's Grove Residents				
P1	Issue for Planning	07.01.08		40 Queen's Grove, NW8		October 2007	checked by	RK
P2	Issue for Information	10.06.09						
P3	General Update - issued for information	10.02.10						
P4	General update - revision clouds added to indicate changes	10.03.10						
				28 - 42 Banner Street London EC1Y 8QE Tel 020 7608 9600 Fax 020 7608 9601 www.ericparryarchitects.co.uk				
				Eric Parry Architects				
				Proposed South West Elevation				
				EPA QGR 02 114				P5