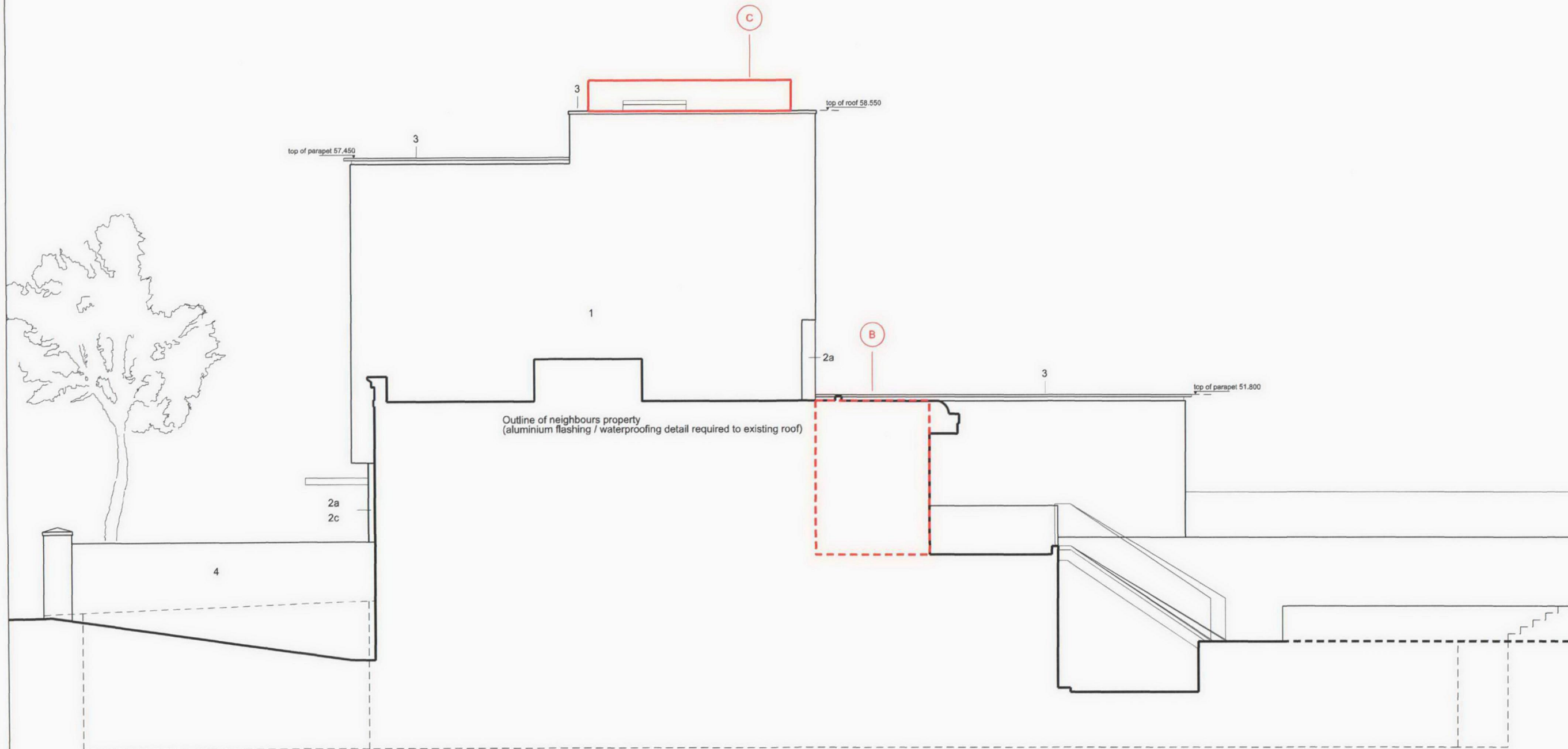


A3

This drawing is to be read in conjunction with all other contract documents and specifications and all other consultants drawings.
All levels and dimensions should be checked on site and any discrepancies notified to the Architect prior to proceeding with works.
THIS DRAWING IS COPYRIGHT. No drawing shall be reproduced in any form without prior written permission of Eric Parry Architects.

PLANNING



Design Amendments

- B** Line of proposed boundary wall cut back from consented scheme to respect corner of existing building / neighbour
- C** Introduction of a taller roof top air source heating and cooling in lieu of the combined ground source and heat rejection units at application. The form of the louvred enclosure is curved so it diminishes in street and garden views. It is about the same height as the chimneys of the original villas which is probably telling.

Note: Internal partitions have amended to suit revised layouts

Materials Key

- 1 Render finish
2a Double glazed system with top hung / parallel opening vents. Return to this elevation to be fire rated to FR60 (internally)
2c Glazed porcelain panelling / rainscreen. Return to this elevation to be fire rated to FR60 (internally)
3 Folded aluminium coping
4 Rendered wall to forecourt

General Key

- 1 Wall Finish
Smooth render 'Stucco' finish to built up insulated wall system. System to be designed to avoid movement and day joints
- 2 Glazing and Porcelain panelling
Translucent and / or clear glass to structurally glazed system. Glazing to be low iron, low e neutral solar control glass. Painted finish to aluminium

- 3 Copings and cills
Painted folded aluminium copings shadow / rebate detail with concealed fixings and back drained to roof. Painted aluminium louvred roof enclosure

Rev	Description	Date	By	Client	Scale	Drawn by	Checked by	Rev
P4	General update - revision clouds added to indicate changes	10.03.10	DL	Queen's Grove Residents	1: 100	ZF		
P5	Issue to DP9	24.03.10		40 Queen's Grove, NW8	October 2007	RK		
P1	Issued for Planning	07.01.08						
P2	Issued for Information	10.06.09						
P3	General update - issued for information	10.02.10						
				28 - 42 Banner Street London EC1Y 8QE Tel 020 7608 9600 Fax 020 7608 9601 www.ericparryarchitects.co.uk				
				Eric Parry Architects				
				Proposed North East Elevation				
				EPA QGR 02 113				P5