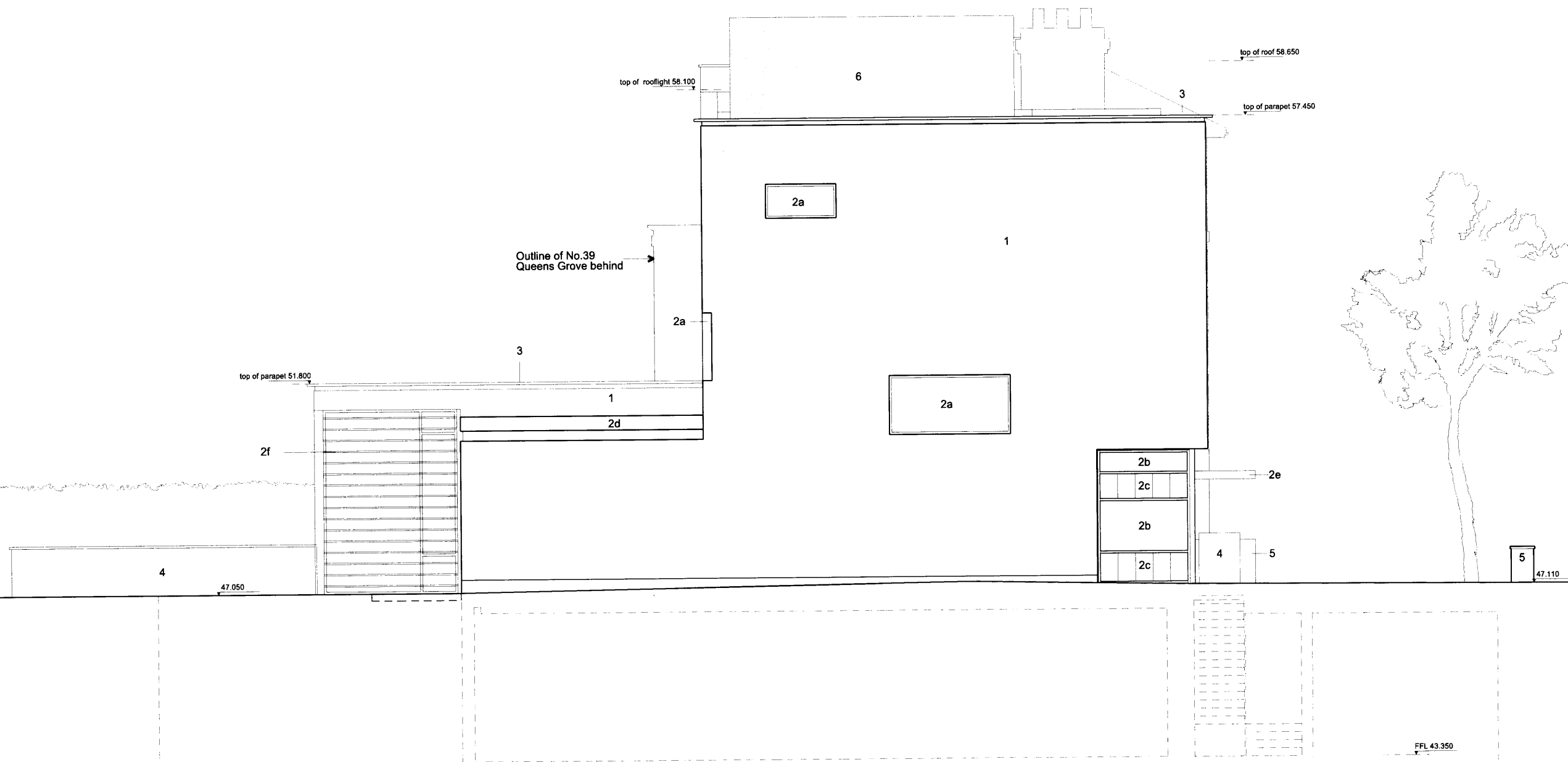


PLANNING



Materials Key

- 1 Render finish
- 2a Fixed double glazed window
- 2b Triple glazed side hung inward opening casement window behind fixed vented flush single glazed rainscreen
- 2c External grade venetian blinds to cavity
- 2d Glazed porcelain panelling / rainscreen
- 2e Flush painted metal panel / upstand to roof edge
- 2f Painted metal canopy with lighting
- 2g Painted rectangular section extruded aluminium louvre blades in front of glazing as 2a
- 3 Double glazed side hung inward opening casement window behind fixed vented flush single glazed rainscreen
- 4 External grade venetian blinds to cavity
- 5 Folded aluminium coping
- 6 Laminated glass balustrades
- 7 Rendered wall to forecourt
- 8 Acoustic louvred roof enclosure

General Key

- 1 Wall Finish

Smooth render 'Stucco' finish to built up insulated wall system
System to be designed to avoid movement and day joints

- 2 Glazing and Porcelain panelling

Translucent and / or clear glass to structurally glazed system
Glazed porcelain panels as rainscreen or insulated cassette (tbc)
Glazing to be low iron, low e neutral solar control glass.
Painted finish to aluminium

- 3 Copings and cills

Painted folded aluminium copings - min. 2mm shadow / rebate detail with concealed fixings and back drained to roof
Painted aluminium louvred roof enclosure

Rev	Description	Date	By	Client	Scale	Drawn by	RD
P0	Issued for planning	14.05.10	BL	Queen's Grove Residents	1: 100		
P1	Issued for planning	17.05.10	BL	40 Queen's Grove, NW8	May 2010		RK
				Revised Proposed South West Elevation			
				drawing title			
				drawing no			
				Rev			
				EPA QGR 02 123			P1

28 - 42 Banner Street
London EC1Y 8QE
Tel 020 7608 9600
Fax 020 7608 9601
www.ericparryarchitects.co.uk

Eric Parry Architects