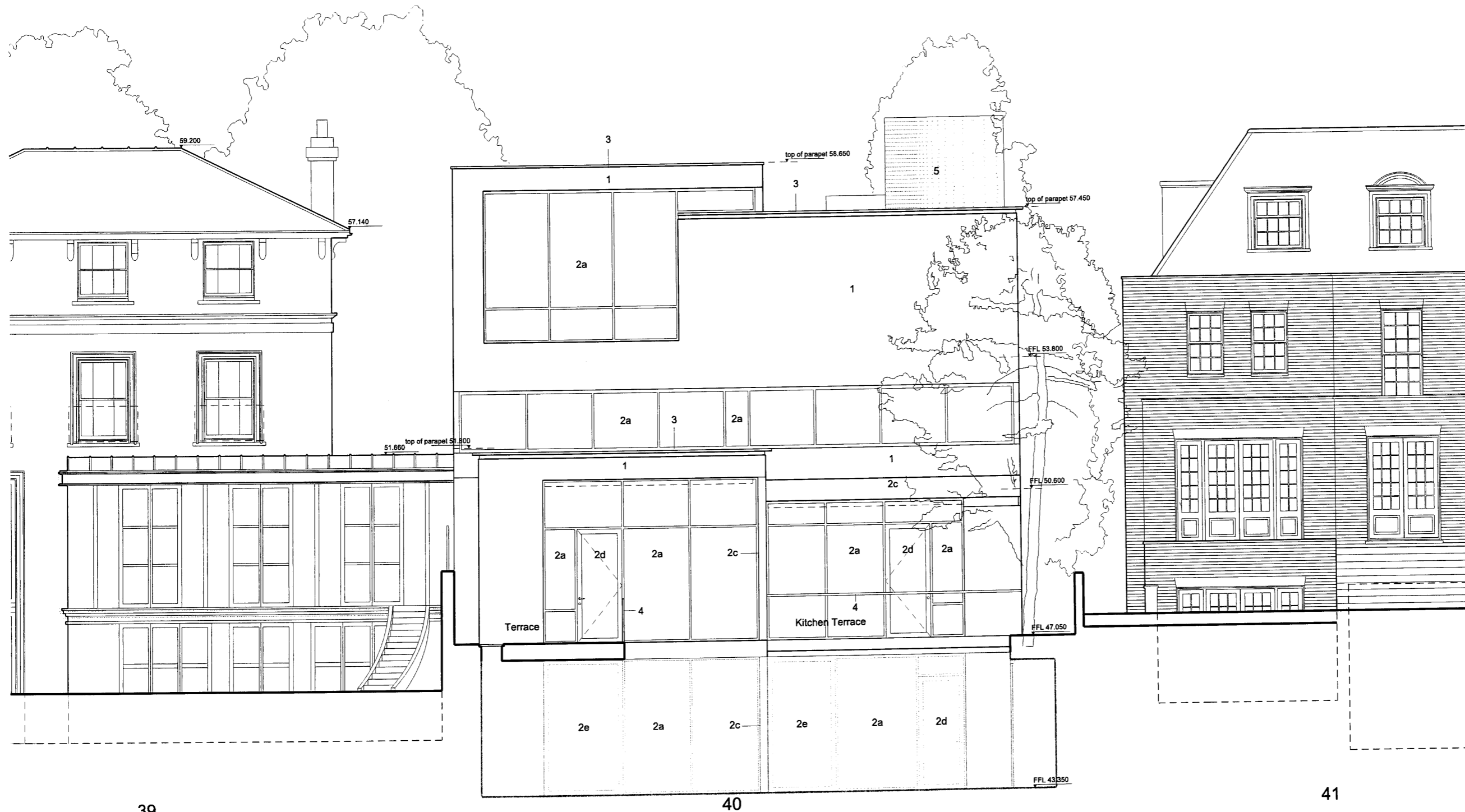


A3

This drawing is to be read in conjunction with all other contract documents and specifications and all other consultants drawings.
All levels and dimensions should be checked on site and any discrepancies notified to the Architect prior to proceeding with works.
THIS DRAWING IS COPYRIGHT. No drawing shall be reproduced in any form without prior written permission of Eric Parry Architects.

Composite North Elevation including lower ground floor elevation

PLANNING



Materials Key

- 1 Render finish
- 2a Double glazed system with top hung / parallel opening vents
- 2b External grade venetian blinds to cavity
- 2c Painted metal panel / upstand to roof edge
- 2d Glazed side hung door
- 2e Glazed sliding doors
- 3 Folded aluminium coping
- 4 Laminated glass balustrades
- 5 Acoustic louvred roof enclosure

General Key

- 1 Wall Finish
- Smooth render 'Stucco' finish to built up insulated wall system. System to be designed to avoid movement and day joints

2 Glazing and Porcelain panelling

- Translucent and / or clear glass to structurally glazed system
- Glazing to be low iron, low e neutral solar control glass.
- Painted finish to aluminium

3 Copings and cills

- Painted folded aluminium copings shadow / rebate detail with concealed fixings and back drained to roof
- Painted aluminium louvred roof enclosure

Rev	Description	Date	By	client	scale	drawn by	RD
P0	Issued for planning	14.05.10	BL	Queen's Grove Residents	1: 100		
P1	Issued for planning	17.05.10	BL	40 Queen's Grove, NW8	May 2010		RK
				Revised Proposed Garden Elevation			
				drawing title			
				drawing no			
				EPA QGR 02 121			P1

28 - 42 Banner Street
London EC1Y 8QE
Tel 020 7608 9600
Fax 020 7608 9601
www.ericparryarchitects.co.uk

Eric Parry Architects