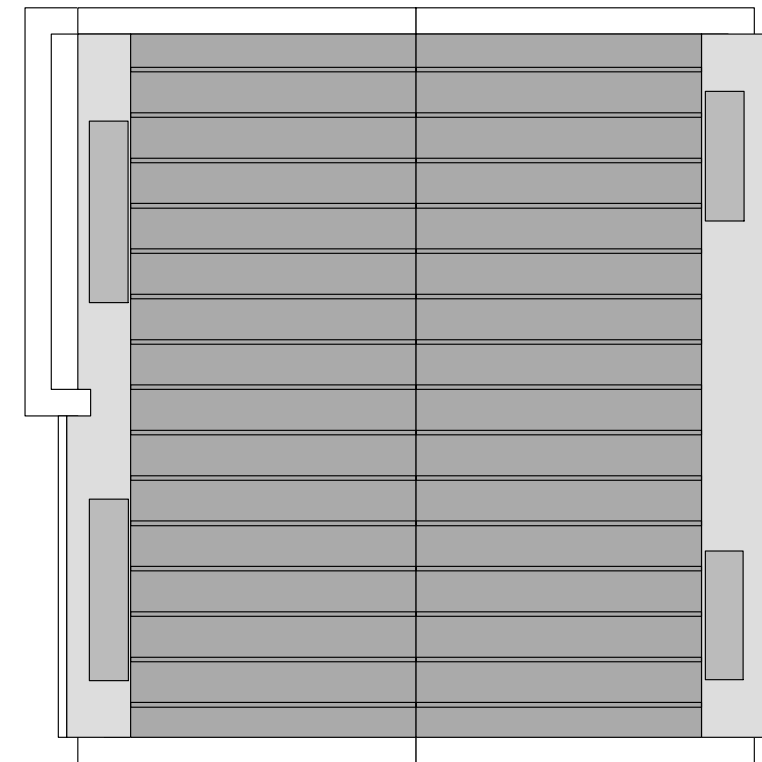
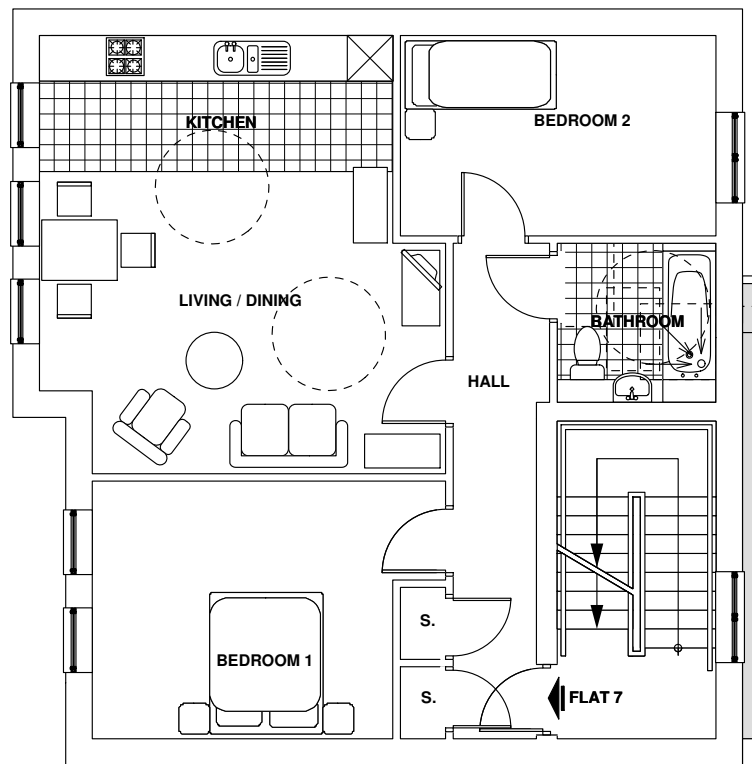


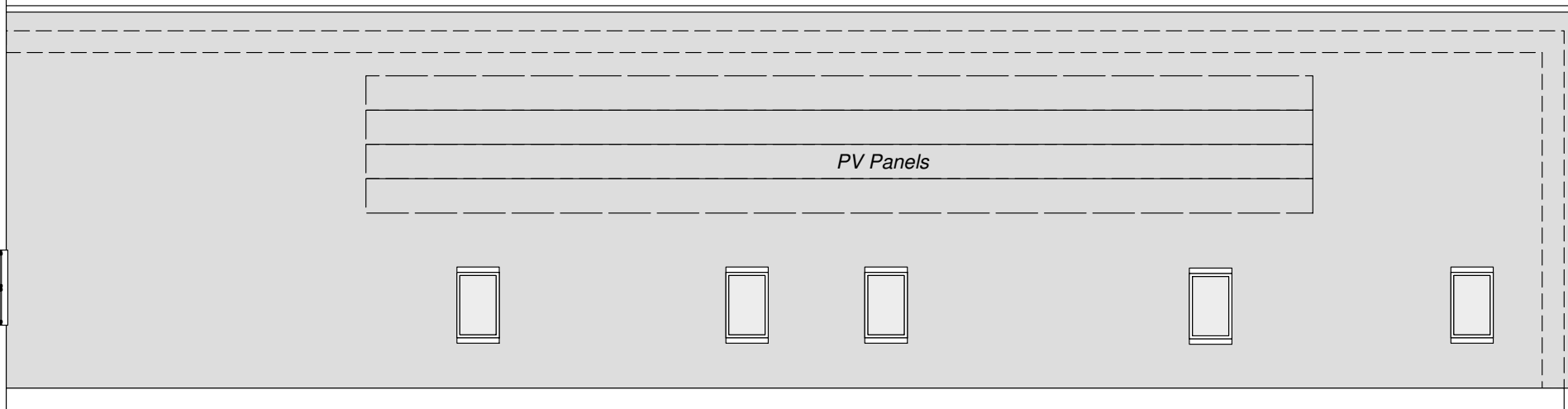
**THIRD FLOOR**



**ROOF PLAN**



**SECOND FLOOR**



REV A: Amendments inline with local authority requirements (LTH & space standards) - A.N.C - 06.04.10

	<b>PRIME BUILDING CONSULTANTS LTD.</b>		<b>014.972.24A</b>	
	<b>SURVEYORS . ARCHITECTS . PLANNERS</b>		PRIME HOUSE;	
	CLIENT; <b>Bromley Park Garden Estates Limited</b>	SCALE; <b>1:100</b>	DATE; <b>Feb '10</b>	1A QUEEN ANNE ROAD;
	PROJECT; <b>Site at Raveley Street / Gottfried Mews, London</b>	DRAWN; <b>J.K.</b>	CHECKED;	MAIDSTONE ME14 1HU;
TITLE; <b>Proposed Roof, 2nd &amp; 3rd Floor Plans</b>			TEL. 01622 692249	
COPYRIGHT. DO NOT REPRODUCE WITHOUT WRITTEN PERMISSION. DO NOT SCALE OFF DRAWING			FAX. 01622 692296	