

Issue	Date	Amendment
A	19.1.90	ROOF PLANT RM AMENDED
B	23.5.90	NOTES ADDED
C	1.5.90	W/F/L REVISED
D	25 MAY 90	Tender Issue
E	19.7.90	NOTES ADDED TO WALLS
F	17 JULY 90	FOR CONSTRUCTION
G	31.1.91	FACADE CONNECTION POINTS INDICATED

FOR CONSTRUCTION

FACADE CONNECTION POINTS INDICATED

210 HIGH HOLBORN

Drawing: EXISTING
FRONT ELEVATION

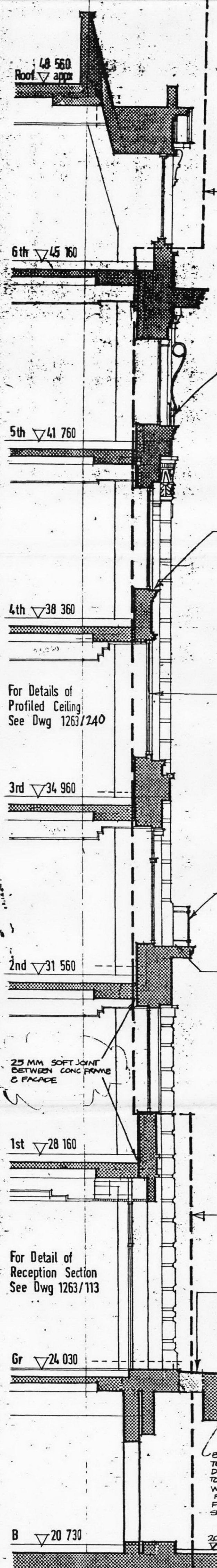
Scale: 1:50
 Date: NOV 89
 Drawn by: [blank]
 Checked by: [blank]

1263 GAX 11 F

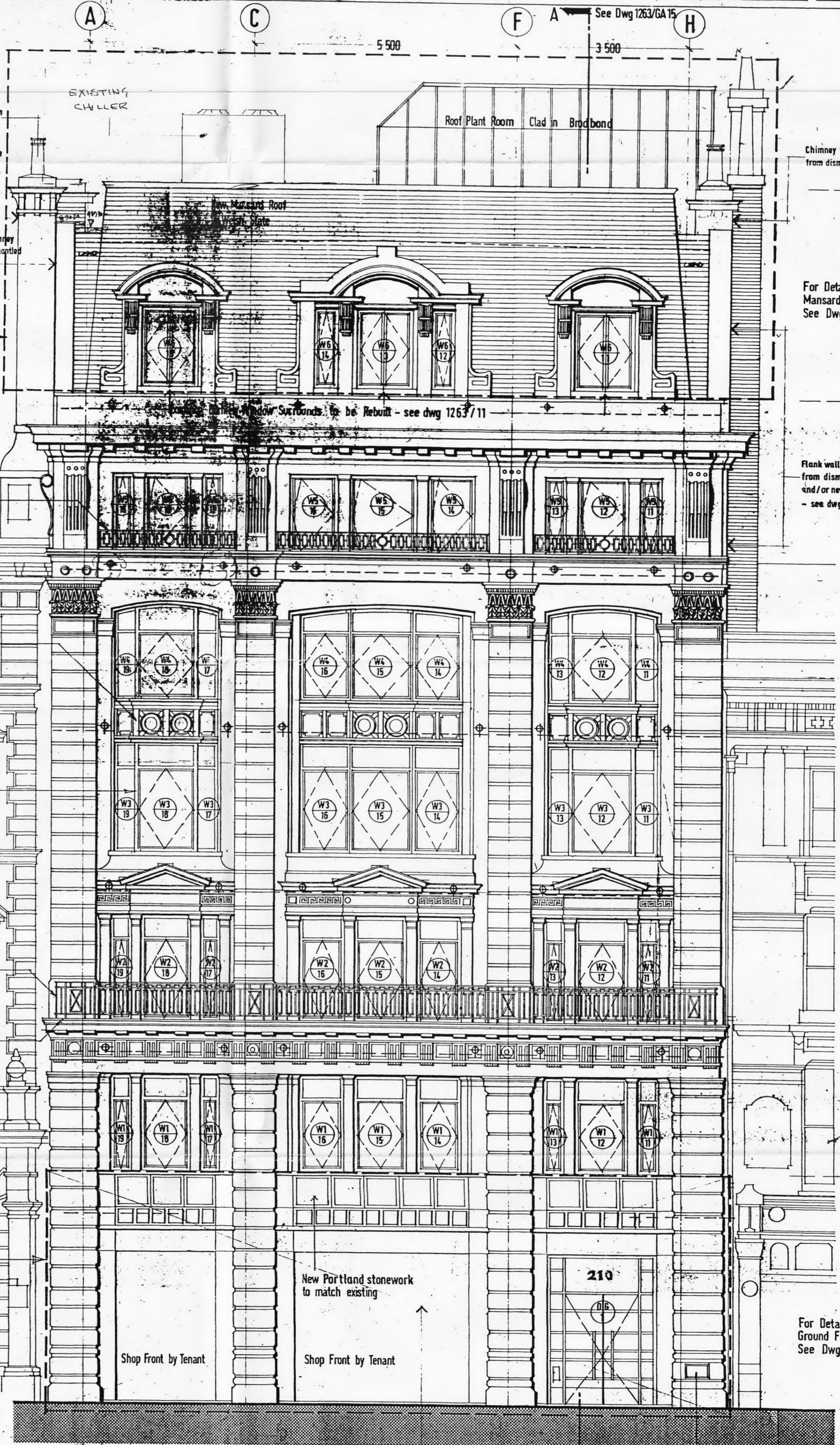
Sheppard Robson Architects
 77 Parkway, Camden Town, London NW1 7PU
 Telephone 01-485 4161

Note 1
 All Existing Stonework to be Repaired as Necessary and Cleaned.

For Full Long Section See Dwg 1263/GA 15.



- REDBANK 175 S / 900mm Buff with 116 insert
Chimney to be rebuilt from dismantled stone
- Flank wall behind chimney to be rebuilt from dismantled stone and/or new Portland stone - see dwg 1263 / 13
- Metal Balustrading to be Refurbished and Painted
- Spandrel Panels to be Refurbished In situ
- New Double Glazed Aluminium Window Frames
- Metal Balustrading to be Refurbished and Painted
- Lead Flashing Over complete sill to fall
- New Works within dotted lines
- Existing Pavement TO BE REPAIRED



Chimney to be rebuilt from dismantled stone

For Detail of Mansard Roof See Dwg 1263/127

Flank wall to be rebuilt from dismantled stone and/or new Portland stone - see dwg 1263 / 12

For Detail of Ground Floor See Dwg 1263/117

Existing Vaults
 BRICKWORK TO VAULT ROOF TO BE REPAIRED FOLLOWING DEMOLITION SIKKA RIVETS TO BE APPLIED TO TOP SHIFTS WALLS TO BE SIKKA RENDERED - SCOFFS FLOOR TO HAVE 40 MM SIKKA BASED SCREED.

FACADE CONNECTION
 DENOTES LOCATION OF FLAG OF STONE EXTERNALLY REMOVED FOR ACCESS TO SUBS. SEE P.F.P. DWG. 10426/5/030

Following removal of existing fascia arrange for inspection of existing ground floor stonework by Architect - further instructions may be issued for retention and repair. Allow for safe demolition and replacement with new of all stonework within this area.

Dry Riser Inlet - dimensions to be confirmed - 600 x 600 approx