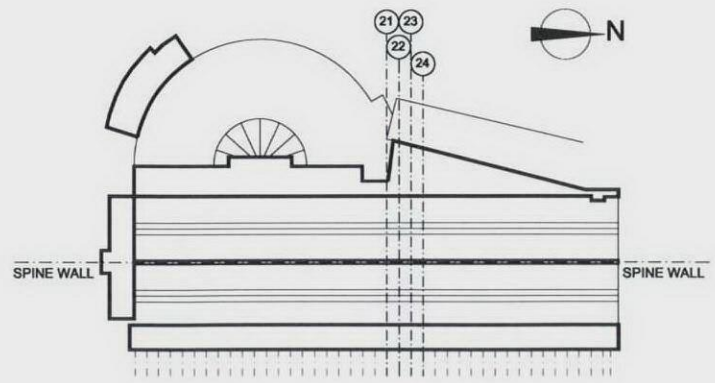
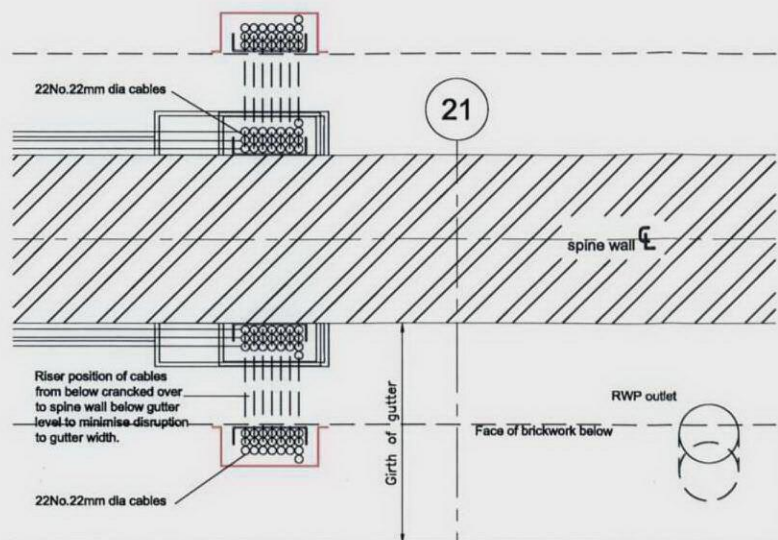


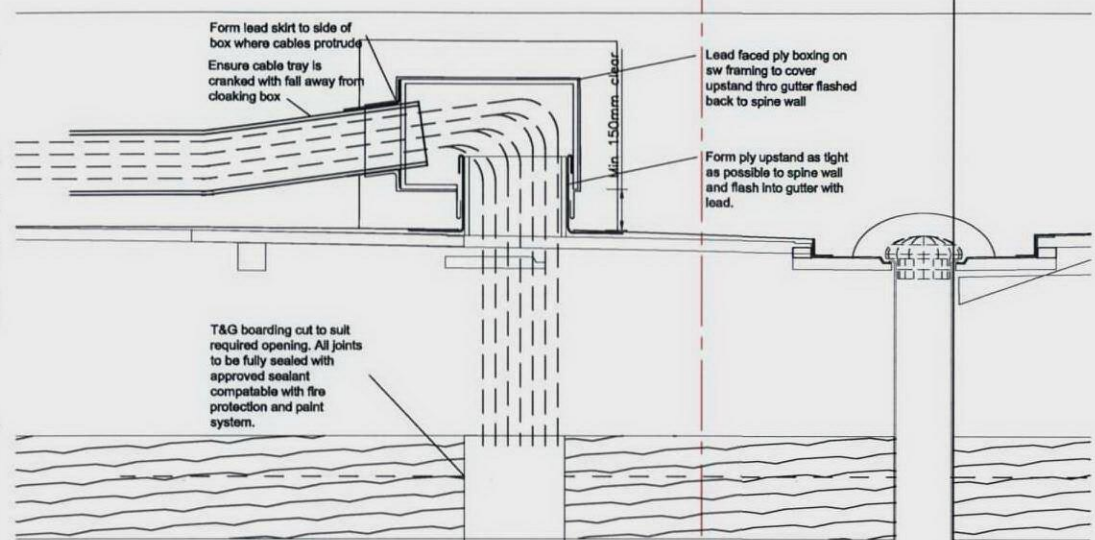
Notes:



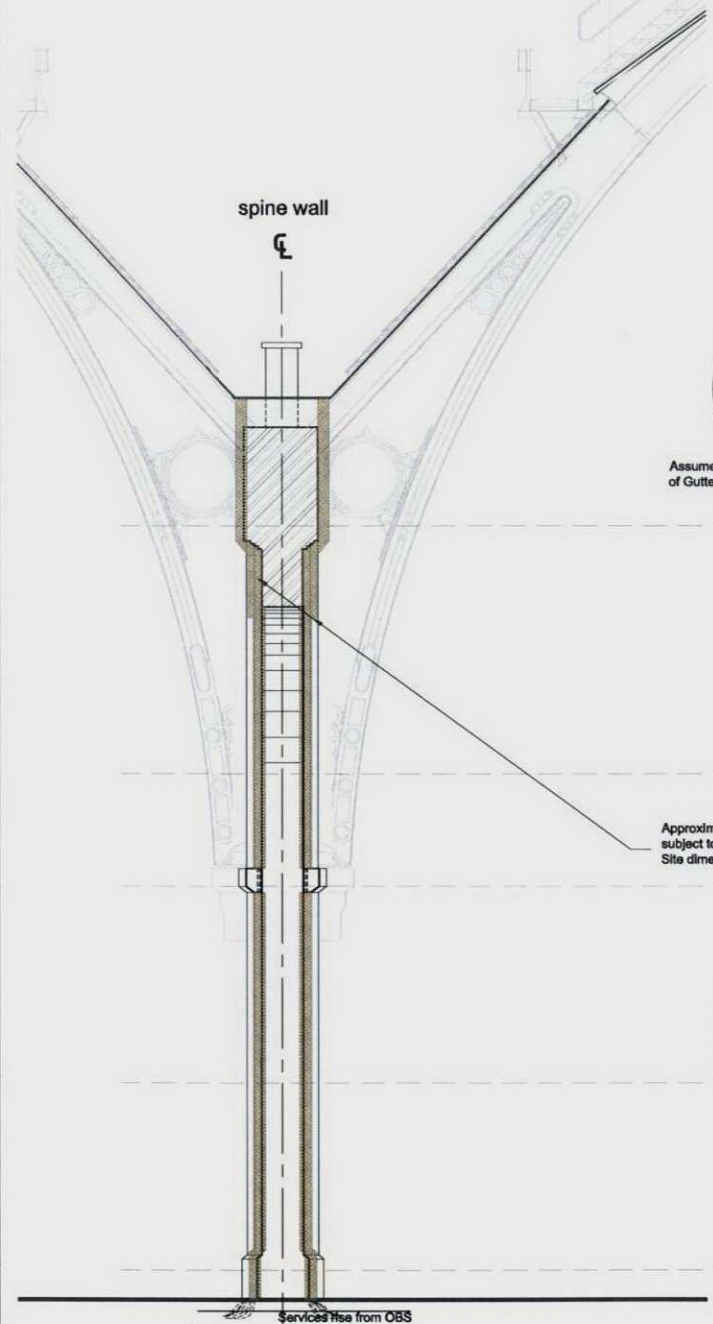
Key Plan  
not to scale



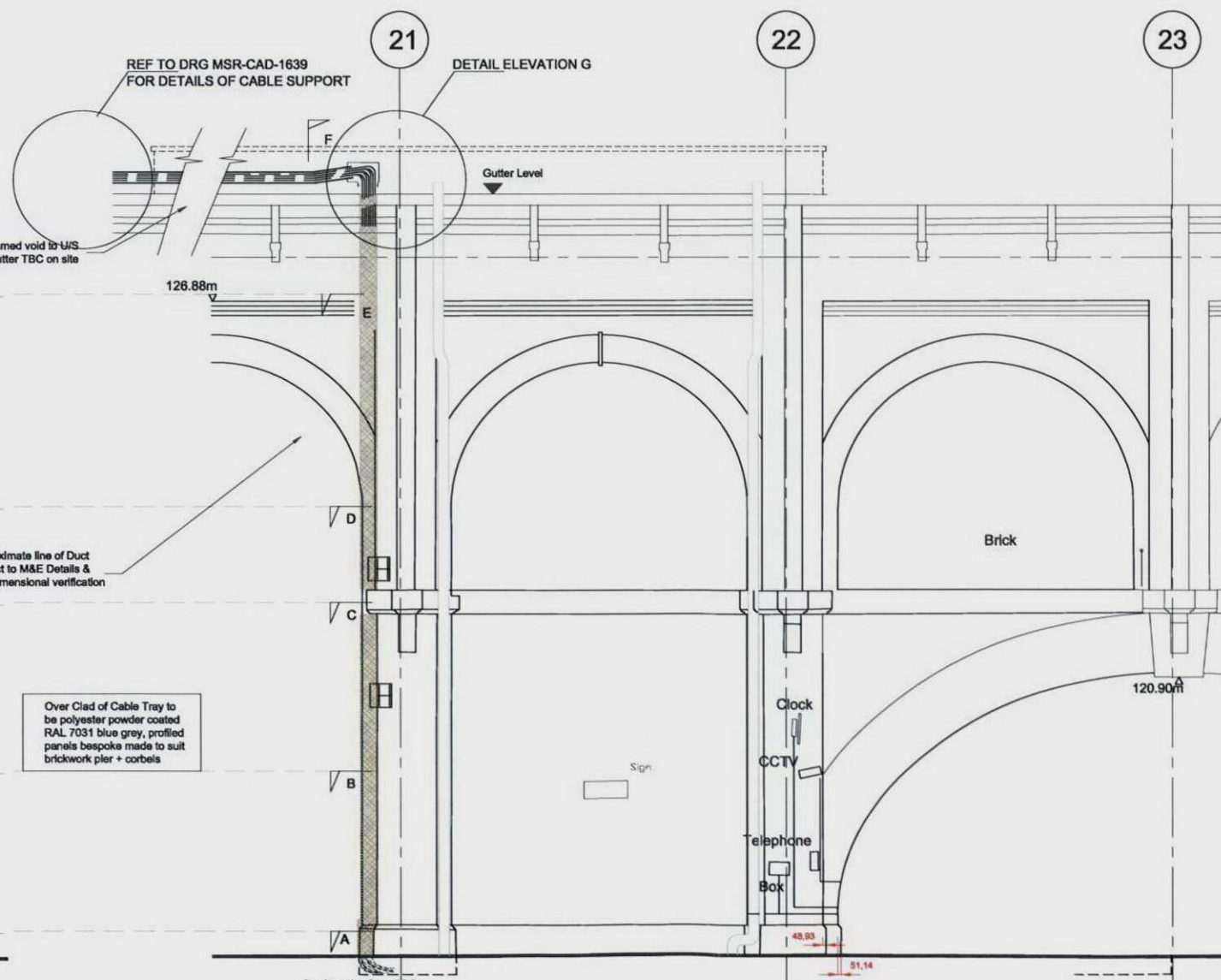
Roof Plan on Gridlines 21,  
1:10 @ A1



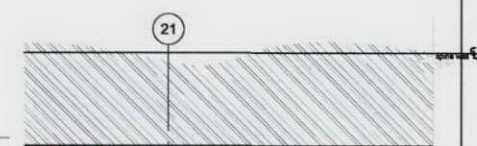
Detail Elevation G of spine wall on Gridlines 21,  
1:10 @ A1



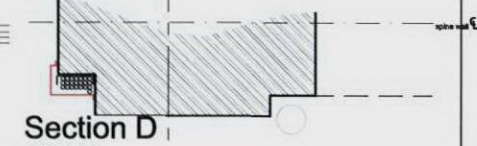
Section F  
1:50 @ A1



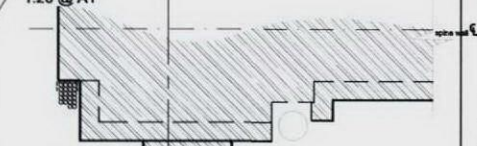
West Elevation on Gridlines 21, 22, 23  
1:50 @ A1



Section E  
1:20 @ A1



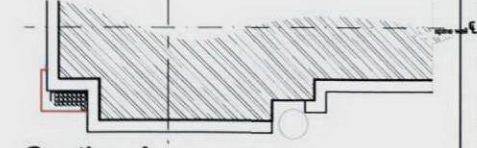
Section D  
1:20 @ A1



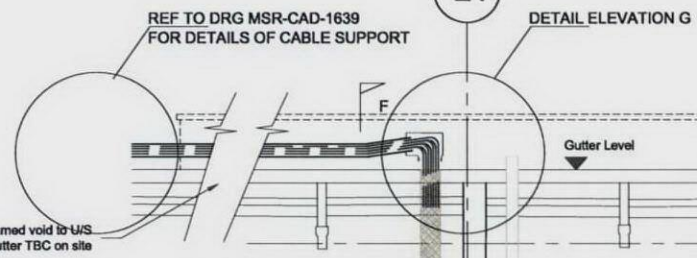
Section C  
1:20 @ A1



Section B  
1:20 @ A1



Section A  
1:20 @ A1



Assumed void to U/S of Gutter TBC on site

Approximate line of Duct subject to M&E Details & Site dimensional verification

Over Clad of Cable Tray to be polyester powder coated RAL 7031 blue grey, profiled panels bespoke made to suit brickwork pier + corbels

|  |          |     |    |    |
|--|----------|-----|----|----|
| 02   | 20.04.10 | HJH | JN | JN |
| Plan detail at roof level added, detail G added, boxing moved to grid 21 from grid 22, cross section details updated reference to additional details on drg MSR-CAD-1639 added Cable size shown at 22No 22mm dia |          |     |    |    |

|               |          |    |    |    |
|---------------|----------|----|----|----|
| 01            | 10.02.10 | JH | JN | JN |
| Initial Issue |          |    |    |    |

| Issue | Date | By | Chkd | Appd |
|-------|------|----|------|------|
|-------|------|----|------|------|

**corus** Railway Infrastructure Services  
PO Box 298  
York YO1 6YH  
T: 01904 454600  
F: 01904 454601

**Network Rail**

Client  
King's Cross Station  
Redevelopment Programme  
Package 2

Drawing Title  
High Bay Lighting  
Cable route details  
Option 4

Scale at A1  
as shown

Discipline  
Architecture

Drawing Status  
Preliminary

|                         |                                   |                    |
|-------------------------|-----------------------------------|--------------------|
| Job No<br><b>B60214</b> | Drawing No<br><b>MSR-CAD-1638</b> | Issue<br><b>02</b> |
|-------------------------|-----------------------------------|--------------------|

A FULLY SIGNED 'MASTER COPY' OF THIS DRAWING EXISTS WITHIN THE CRIS PROJECT FILE & IS AVAILABLE FOR AUDIT PURPOSES.