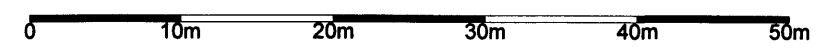
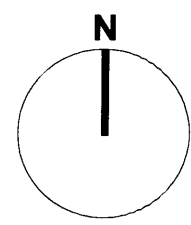


NOTES

DO NOT SCALE FROM THIS DRAWING

PLANNING



red line indicates ownership

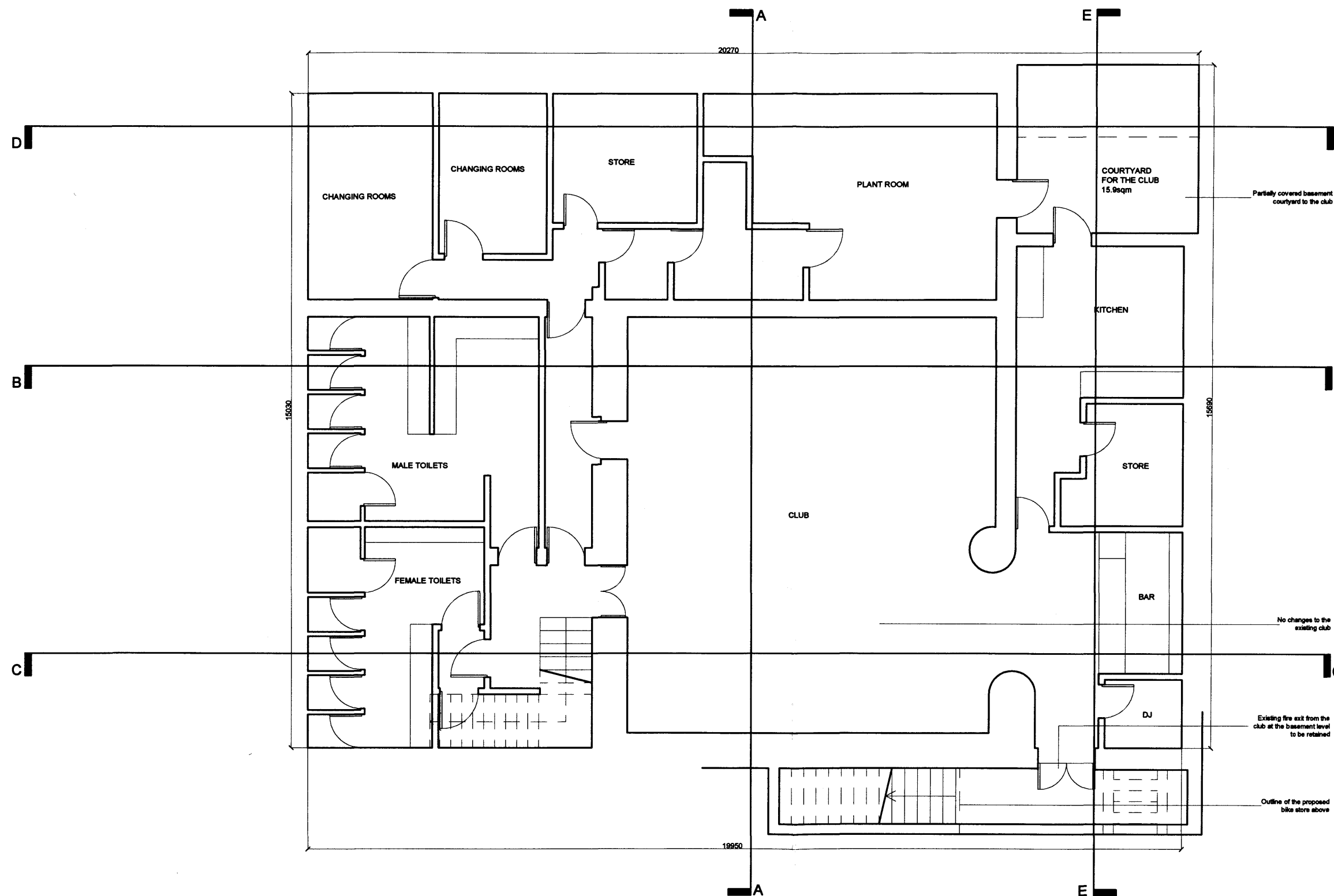
Martin Evans Architects ©	
18 Charlotte Road London EC2A 3PB tel 020 7729 2474	
JOB 34 -38 Eversholt Street Camden London NW1 1DA	
TITLE Proposed Site Plan	
DATE	06.08.2009
SCALE	1:500 @ A3
DRAWN BY	DY/KD
CHECKED BY	
DRAWING NO.	EVSH-PL-00

NOTES

DO NOT SCALE FROM THIS DRAWING

PLANNING

Revisions:
 Rev A: 02.02.10: Section lines added.
 Rev B: 20.04.10: Section lines and notes added. KD
 Rev C: 25.05.10: External fire escape staircase updated following site visit. KD

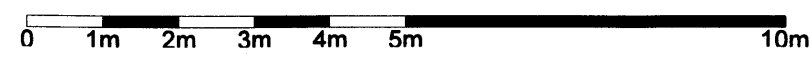
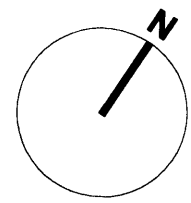
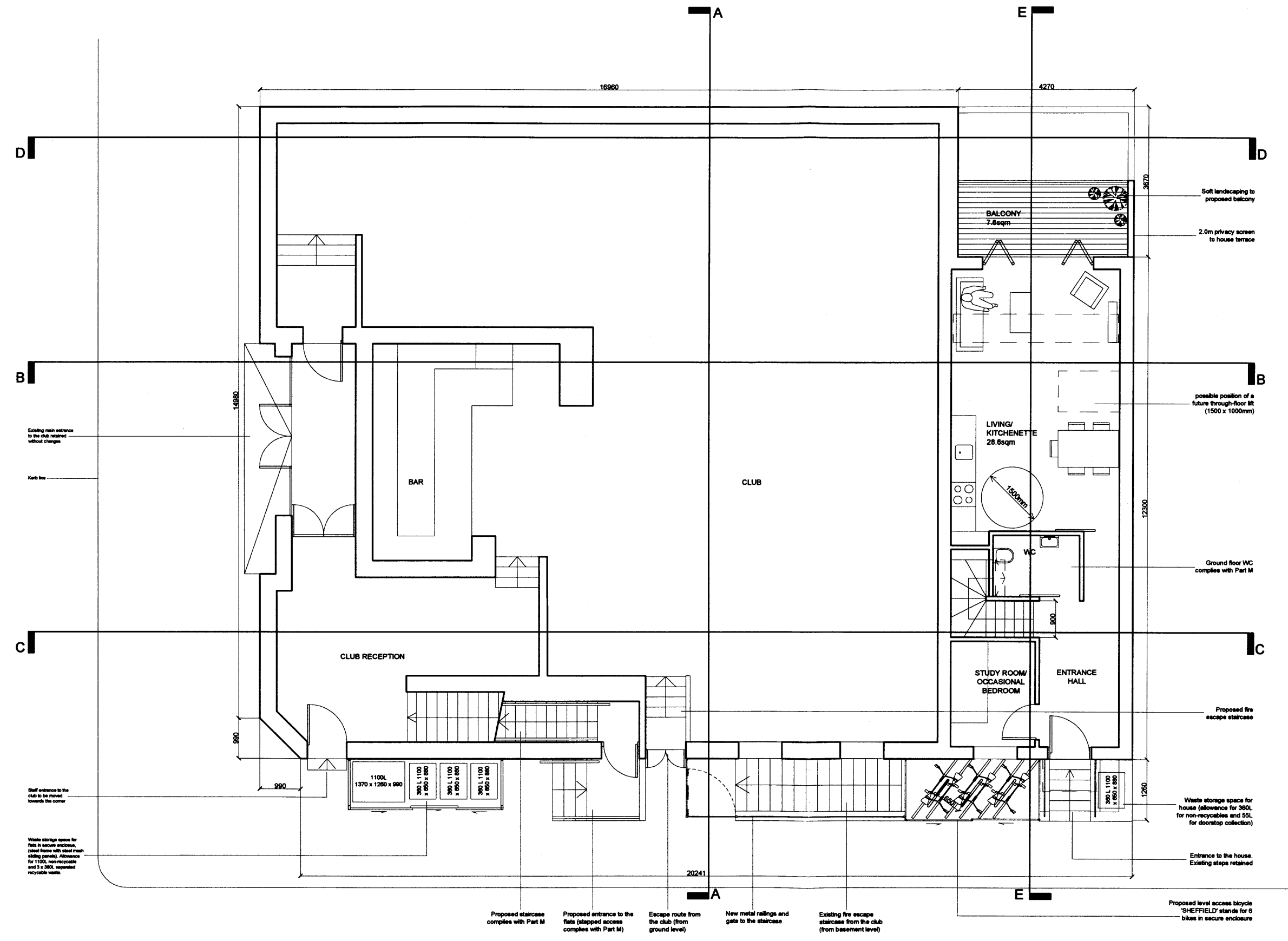


Martin Evans Architects 18 Charlotte Road London EC2A 3PB tel 020 7729 2474	
JOB 34 -38 Eversholt Street Camden London NW1 1DA	
TITLE Proposed Basement Plan	
DATE	06.08.2009
SCALE	1:100 @ A3
DRAWN BY	DY/KD
CHECKED BY	
DRAWING NO.	EVSH-PL-01-C

DO NOT SCALE FROM THIS DRAWING

PLANNING

REVISIONS:
 Rev A: 16.11.09 Bicycle storage moved outside the building. Ground floor to house includes lifetime homes compliant W/C and Bedspace.
 Rev B: 02.02.10 Section lines added.
 Rev C: 11.03.10 Bicycle store amended. Ground floor W/C to house now Part M compliant. Changes amended in accordance.
 Rev D: 13.04.10 Drawing updated, section lines and notes added, bicycle store position changed, KD
 Rev E: 26.05.10 Further amendments to bicycle store position and layout following site visit and comments from Clients and Planners. KD



Martin Evans Architects ©
 18 Charlotte Road
 London EC2A 3PB
 tel 020 7729 2474

JOB
 34 -38 Eversholt Street
 Camden
 London
 NW1 1DA

TITLE
 Proposed Ground Floor Plan

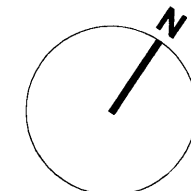
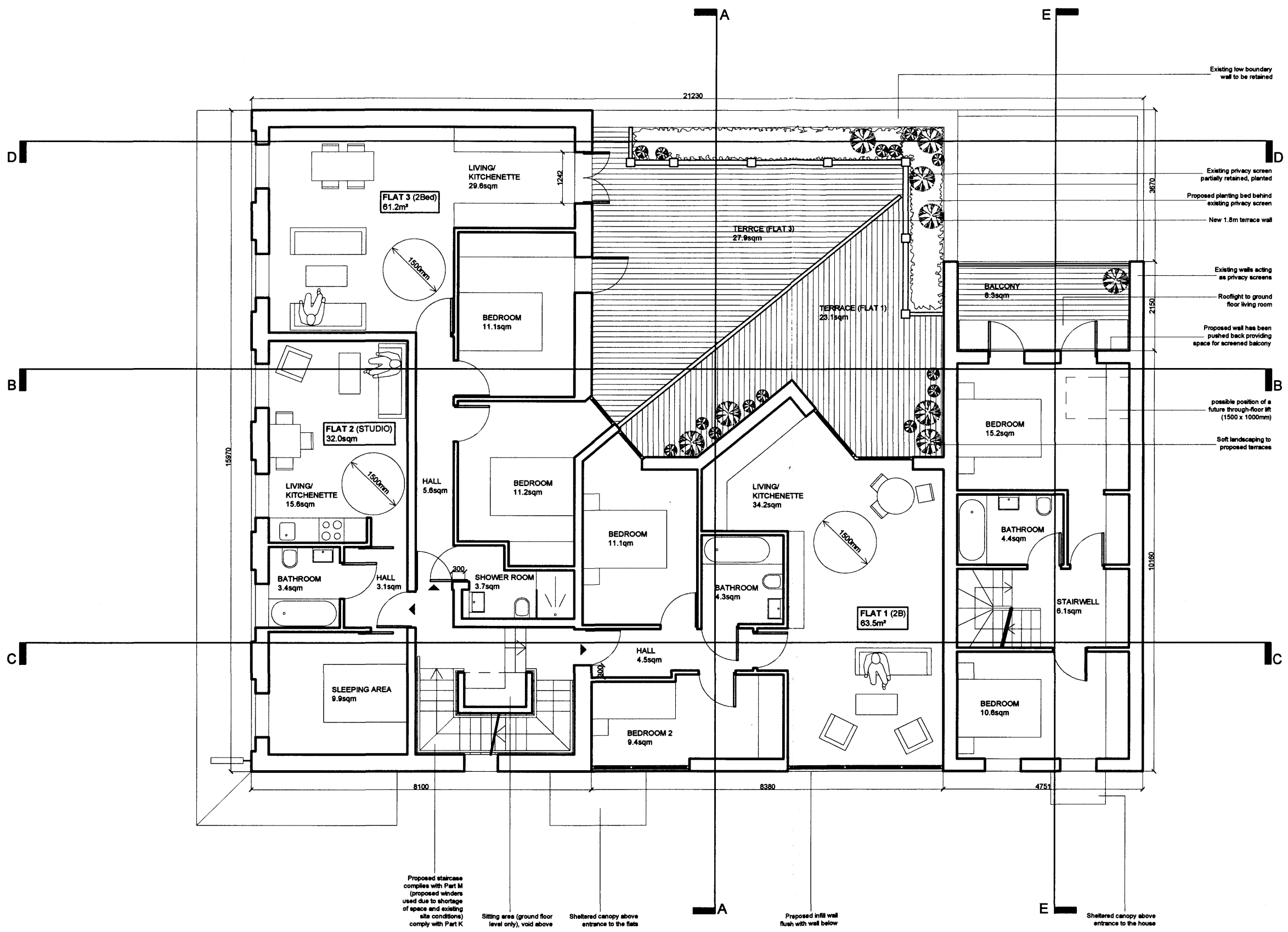
DATE	06.08.2009
SCALE	1:100 @ A3
DRAWN BY	DY/KD
CHECKED BY	
DRAWING NO.	EVSH-PL-02-E

NOTES

DO NOT SCALE FROM THIS DRAWING

PLANNING

Revisions:
 Rev A: 27.11.09 Bathroom layout amended. Bathroom doors open outwards.DY
 Rev B: 02.02.10 Section lines added. Layout amended following comments from the planners.KD
 Rev C: 11.03.10 major alterations to flat 1,2 and 3. DY
 Rev D: 13.04.10 Drawing updated, notes and section lines added. KD



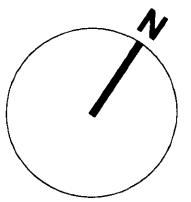
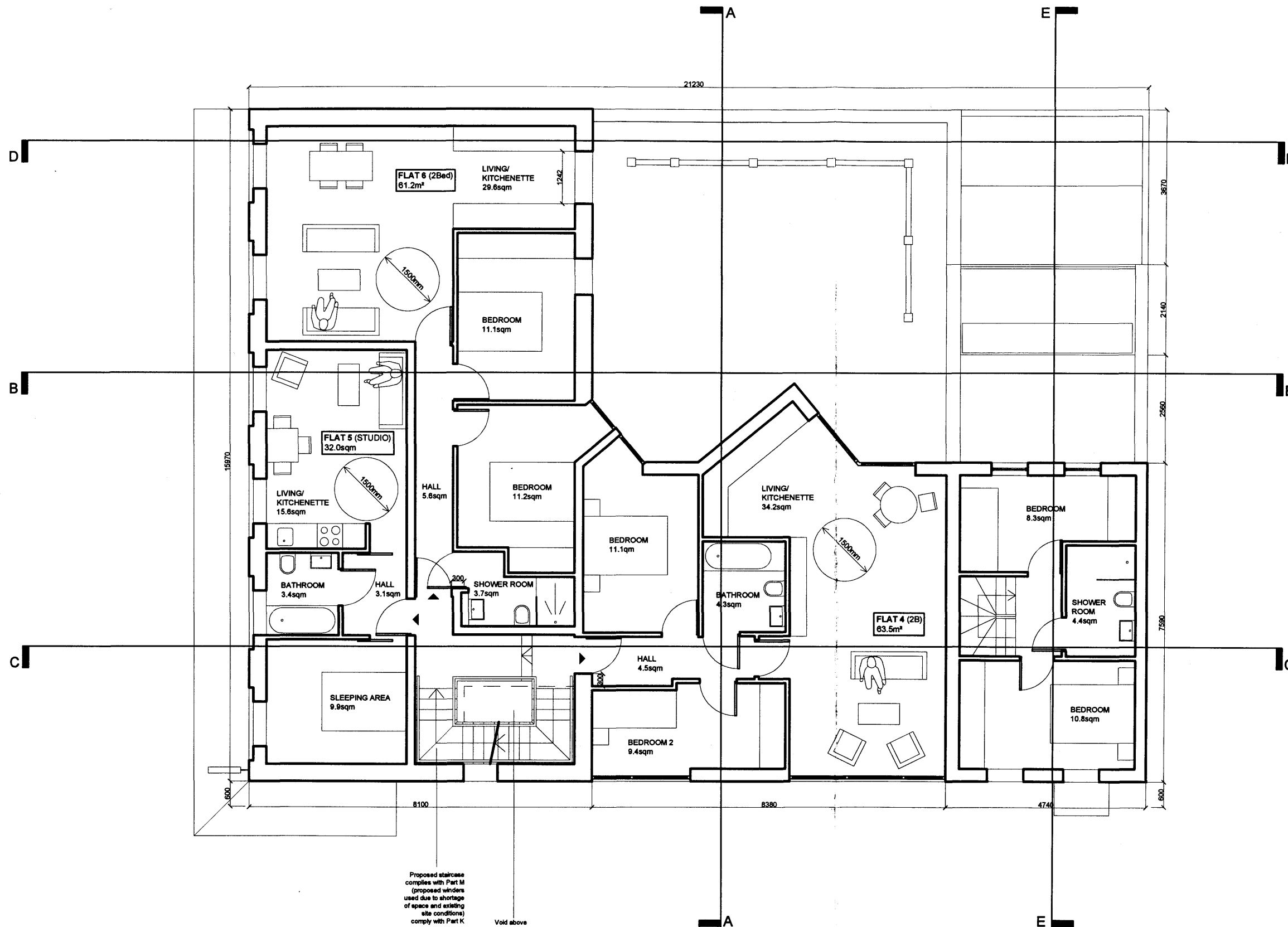
Martin Evans Architects 18 Charlotte Road London EC2A 3PB tel 020 7729 2474	
JOB 34 -38 Eversholt Street Camden London NW1 1DA	
TITLE Proposed First Floor Plan	
DATE	06.08.2009
SCALE	1:100 @ A3
DRAWN BY	DY/KD
CHECKED BY	
DRAWING NO.	EVSH-PL-03-D



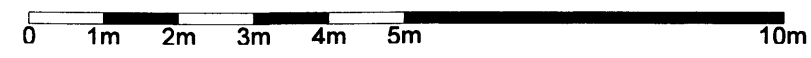
Proposed staircase complies with Part M (proposed winders used due to shortage of space and existing site conditions) comply with Part K
 Sitting area (ground floor level only, void above)
 Sheltered canopy above entrance to the flats
 Proposed infill wall flush with wall below
 Sheltered canopy above entrance to the house

PLANNING

Revisions:
 Rev A: 27.11.09 Bathroom Layout amended. Bathroom doors open outwards. DY
 Rev B: 02.02.10 Section lines added. Amendments following comments from planners. KD
 Rev C: 11.03.10 Major alterations to flats 4,5 and 6. DY
 Rev D: 13.04.10 Drawing updated, section lines and notes added. KD

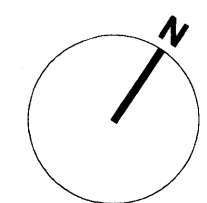
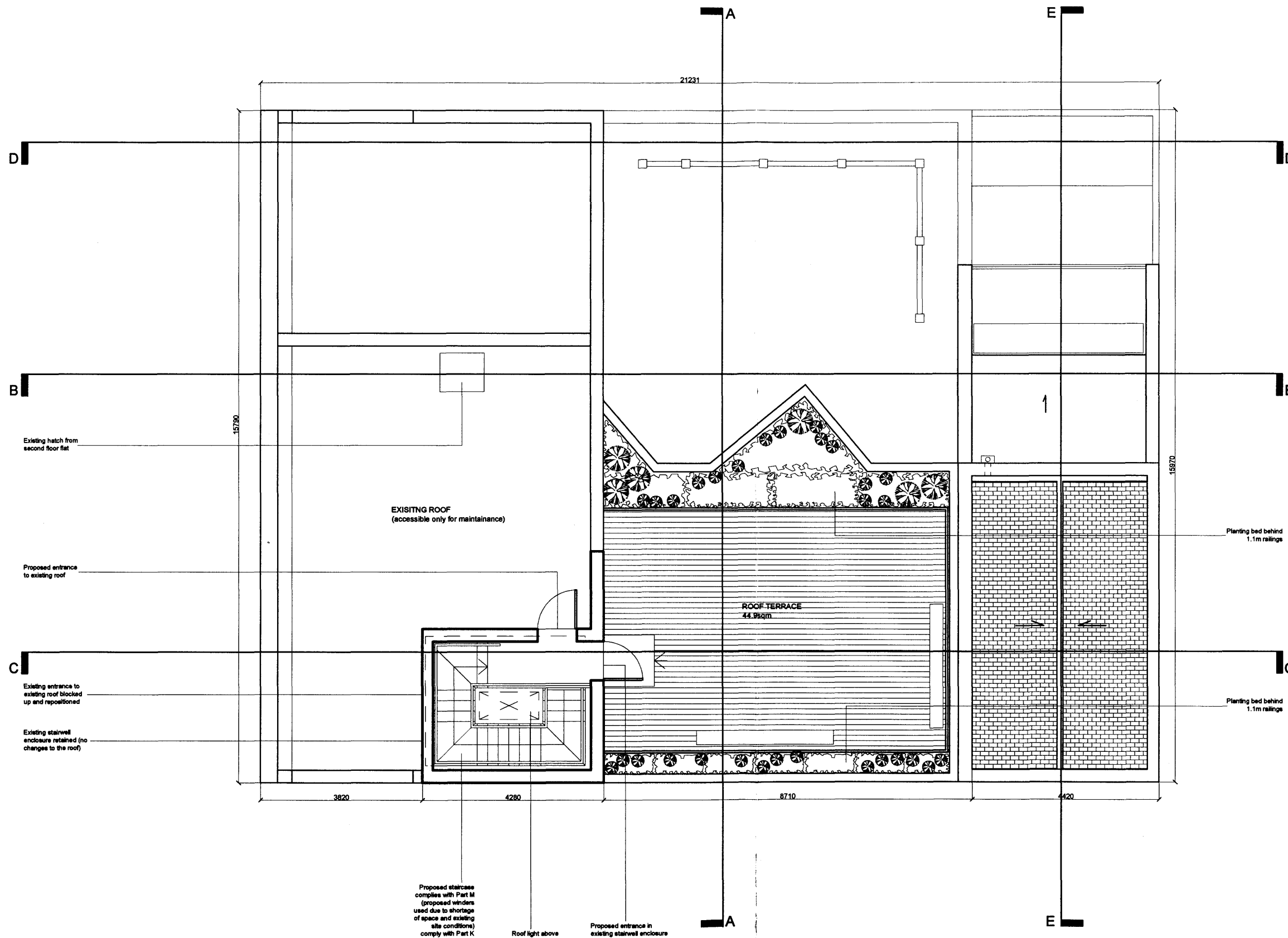


Martin Evans Architects ©	
18 Charlotte Road London EC2A 3PB tel 020 7729 2474	
JOB 34 -38 Eversholt Street Camden London NW1 1DA	
TITLE Proposed Second Floor Plan	
DATE	06.08.2009
SCALE	1:100 @ A3
DRAWN BY	DY/KD
CHECKED BY	
DRAWING NO.	EVSH-PL-04-D



PLANNING

Revisions:
 Rev A: 02.02.10 Amendments following comments from Planners, third floor omitted, section lines added. KD
 Rev B: 11.03.10 Roof terrace with access from communal stairs to flats shown. DY
 Rev C: 13.04.10 Drawing updated, notes and section lines added. KD



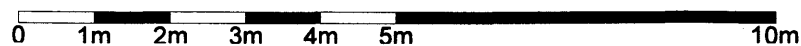
Martin Evans
 Architects ©

18 Charlotte Road
 London EC2A 3PB
 tel 020 7729 2474

JOB
 34 -38 Eversholt Street
 Camden
 London
 NW1 1DA

TITLE
 Proposed Roof Plan

DATE	06.08.2009
SCALE	1:100 @ A3
DRAWN BY	DY/KD
CHECKED BY	
DRAWING NO.	EVSH-PL-06-C

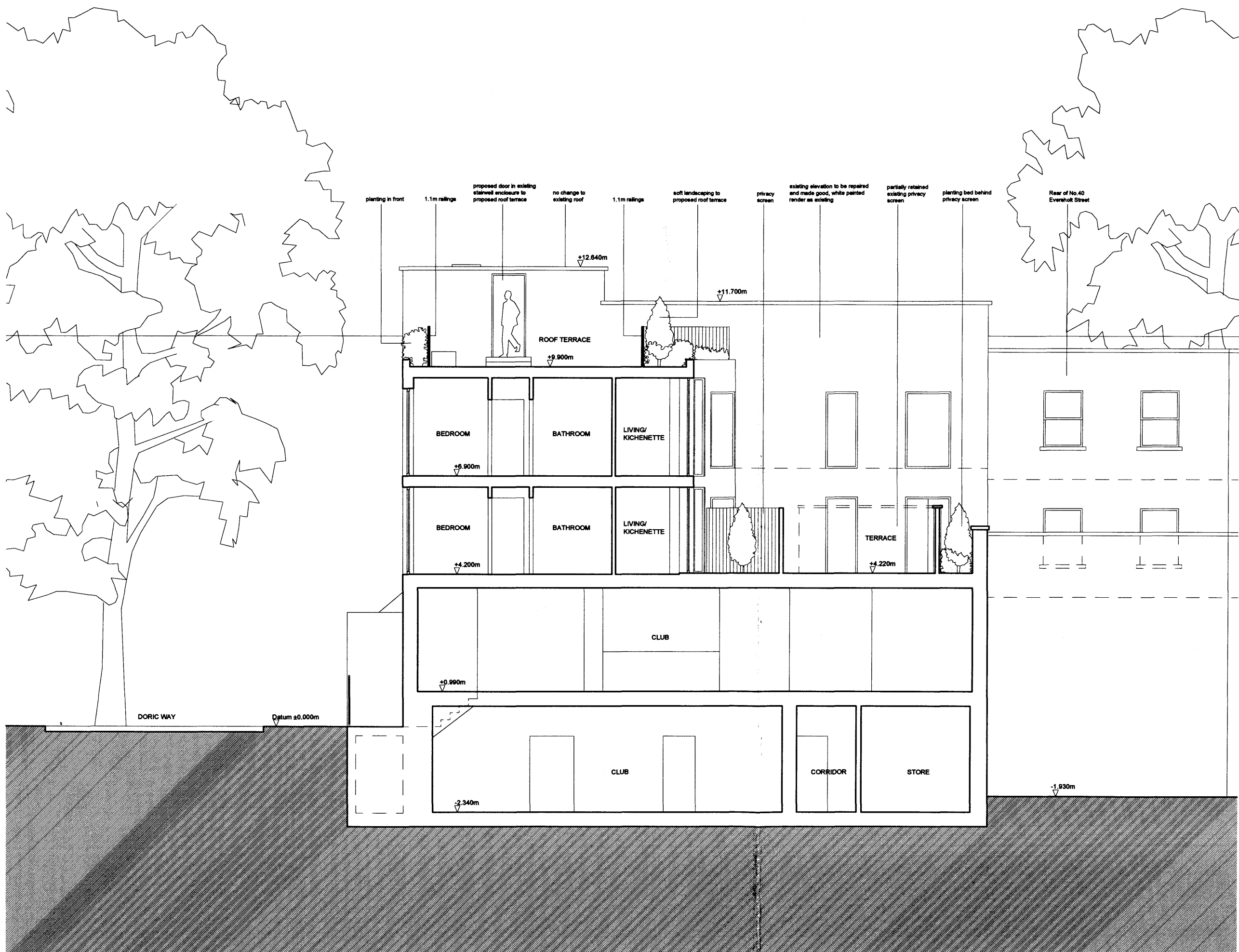


NOTES

DO NOT SCALE FROM THIS DRAWING

PLANNING

REVISIONS:
 Rev A: 16.11.09 Bicycle storage moved outside the building.
 Rev B: 03.02.10 Amendments following comments from Planners (third floor omitted), levels updated, information on adjacent buildings added.kd
 Rev C: 20.04.10 Notes added. KD
 Rev D: 26.05.10 Amendments to bicycle store position and layout following site visit and comments from Clients and Planners. KD



Martin Evans Architects ©	
18 Charlotte Road London EC2A 3PB tel 020 7729 2474	
JOB 34 -38 Eversholt Street Camden London NW1 1DA	
TITLE Proposed Section A-A	
DATE	06.08.2009
SCALE	1:100 @ A3
DRAWN BY	DY/KD
CHECKED BY	
DRAWING NO.	EVSH-PL-07-D



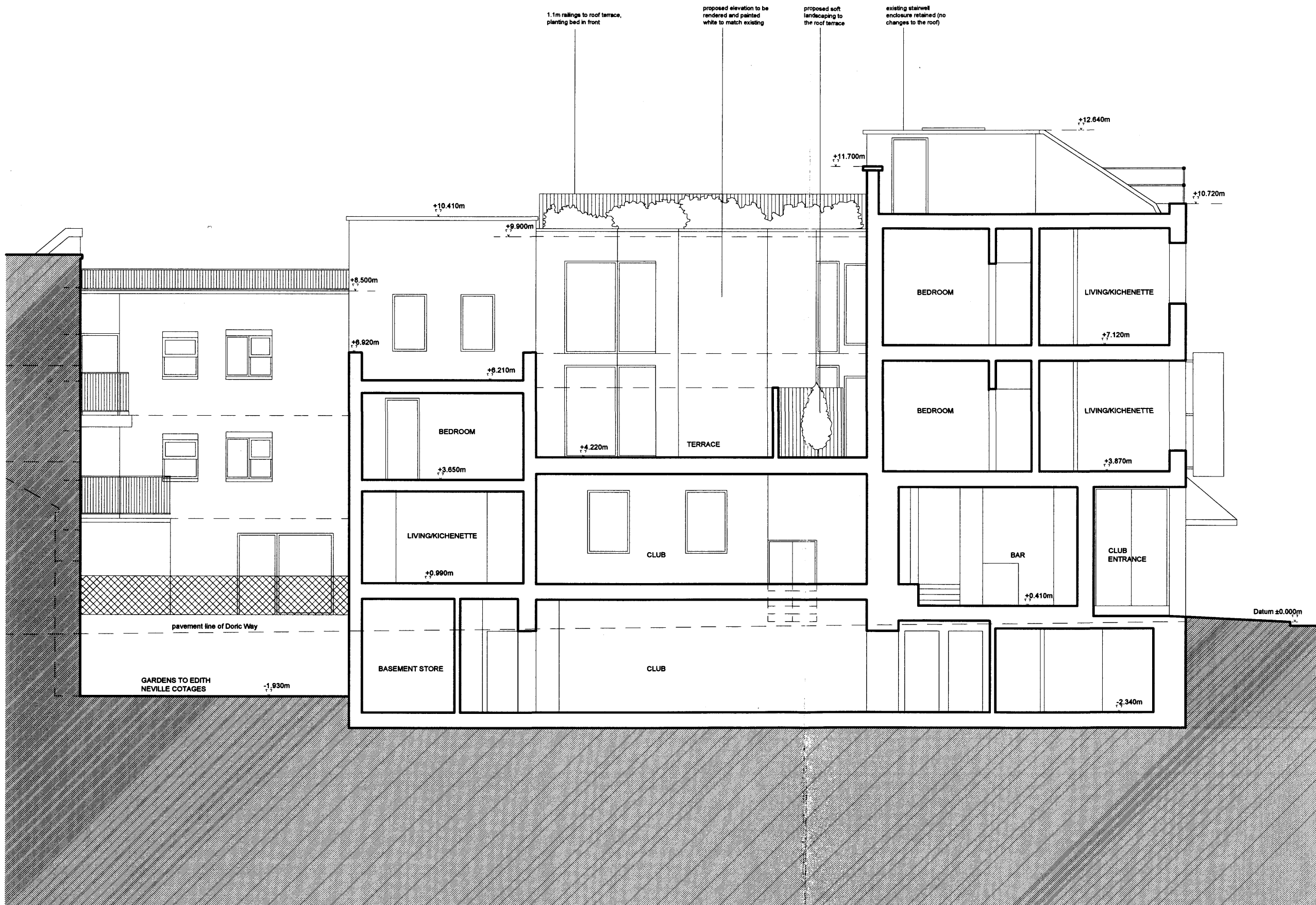
NOTES

DO NOT SCALE FROM THIS DRAWING

PLANNING

REVISIONS:

- Rev A: 16.11.09 Bicycle storage moved outside the building.
- Rev B: 03.02.10 Amendments following comments from Planners, third floor omitted, levels updated, information on adjacent buildings added.
- Rev C: 13.04.10 Amendments following changes to plans, notes added. KD



Martin Evans
Architects ©

18 Charlotte Road
London EC2A 3PB
tel 020 7729 2474

JOB
34 -38 Eversholt Street
Camden
London
NW1 1DA

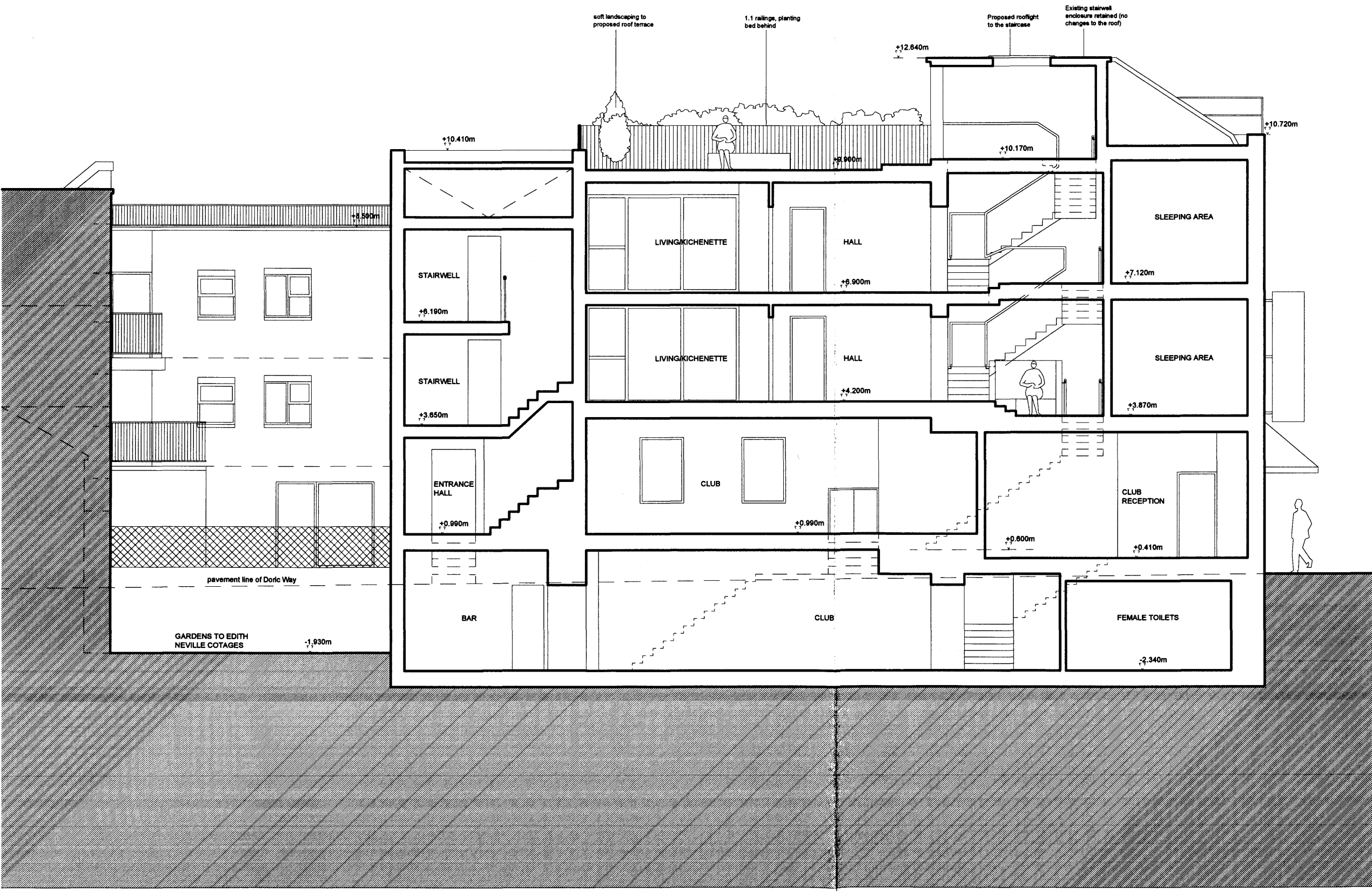
TITLE
Proposed Section B-B

DATE	06.08.2009
SCALE	1:100 @ A3
DRAWN BY	DY/KD
CHECKED BY	
DRAWING NO.	EVSH-PL-08-C

DO NOT SCALE FROM THIS DRAWING

PLANNING

REVISIONS:
 Rev A: 16.11.09 Bicycle storage moved outside the building.
 Rev B: 03.02.10 Amendments following comments from Planners (third floor omitted), levels updated, information on adjacent buildings added.
 Rev C: 13.04.10 Amendments following changes to plans, notes added. KD



Martin Evans Architects ©	
18 Charlotte Road London EC2A 3PB tel 020 7729 2474	
JOB 34 -38 Eversholt Street Camden London NW1 1DA	
TITLE Proposed Section C-C	
DATE	06.08.2009
SCALE	1:100 @ A3
DRAWN BY	DY/KD
CHECKED BY	
DRAWING NO.	EVSH-PL-09-C

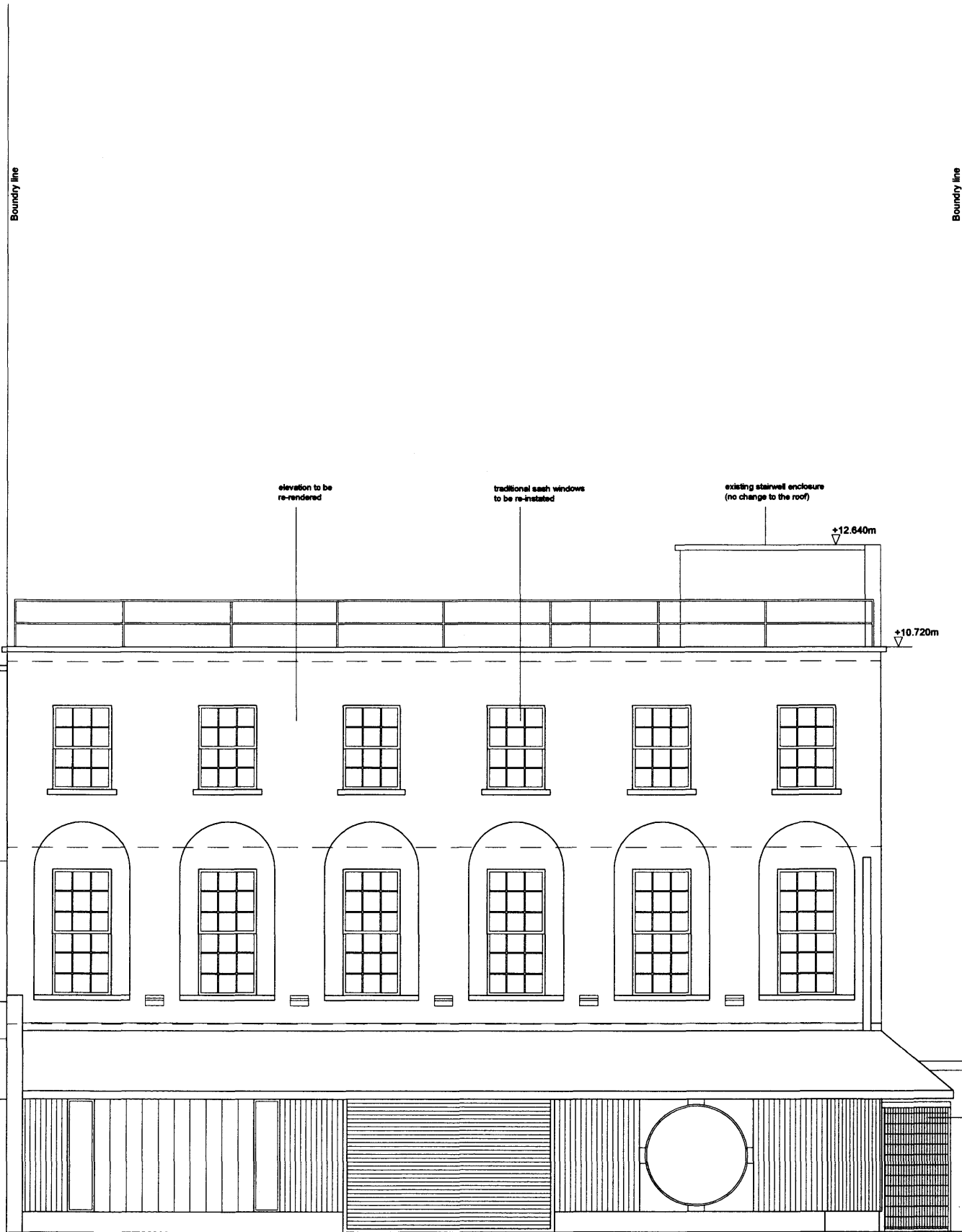
NOTES

DO NOT SCALE FROM THIS DRAWING

PLANNING

Revisions:

Rev A: 03.02.10: Amendments following comments from Planners (third floor omitted), levels updated, additional information on adjacent buildings added.
Rev B: 14.04.10 Notes added, bicycle store revised. KD
Rev C: 26.05.10 Further amendments to bicycle store position and layout following site visit and comments from Clients and Planners. KD



proposed waste storage space for flats in secure enclosure (steel frame with steel mesh sliding panels)

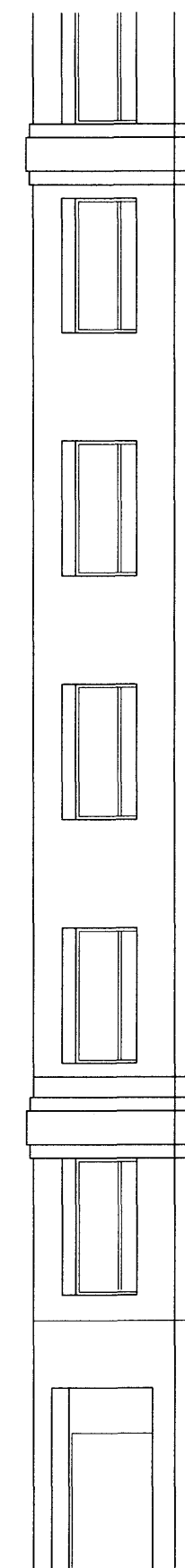
+12.640m

+10.720m

Datum ±0.000m

DORIC WAY

Boundary line



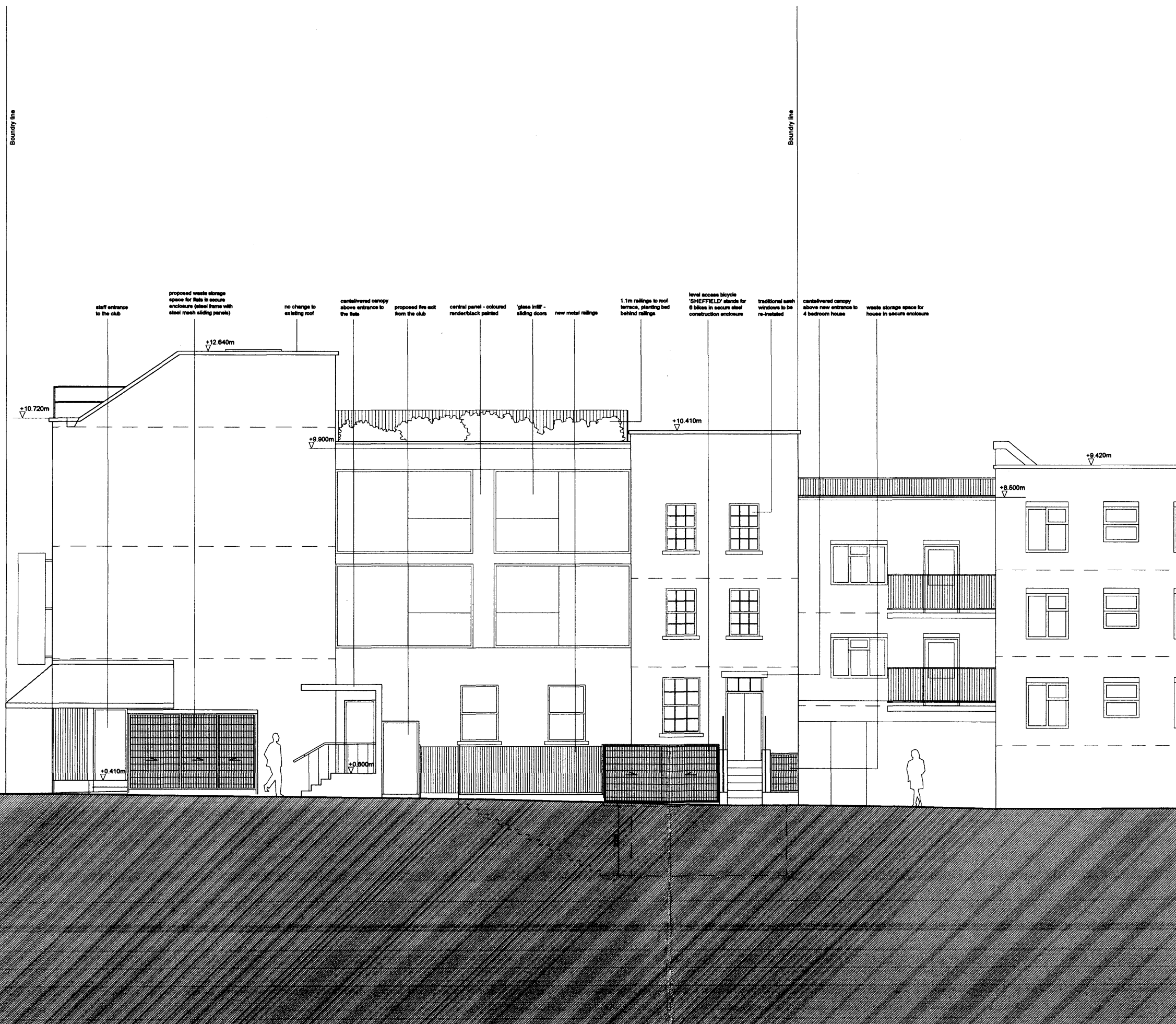
Martin Evans Architects 18 Charlotte Road London EC2A 3PB tel 020 7729 2474	
JOB 34 -38 Eversholt Street Camden London NW1 1DA	
TITLE Proposed Front Elevation	
DATE	06.08.2009
SCALE	1:100 @ A3
DRAWN BY	DY/KD
CHECKED BY	
DRAWING NO.	EVSH-PL-10-C



DO NOT SCALE FROM THIS DRAWING

PLANNING

REVISIONS:
 Rev A: 19.11.09 Bicycle storage moved outside the building.
 Rev B: 03.02.10 Amendments following comments from Planners (third floor omitted), levels updated, additional information on adjacent buildings added.
 Rev C: 11.02.10 Amendment to side elevation. projecting box with balconies removed for full height glazing elements with copper sheeting between. Bins store now located on front elevation
 Rev D: 13.04.10 Amendments following changes to layout, bicycle storage revised, notes added. KD
 Rev E: 28.05.10 Further amendments to bicycle store position and layout following site visit and comments from Clients and Planners. KD



Martin Evans Architects ©	
18 Charlotte Road London EC2A 3PB tel 020 7729 2474	
JOB 34 -38 Eversholt Street Camden London NW1 1DA	
TITLE Proposed Side Elevation	
DATE	06.08.2009
SCALE	1:100 @ A3
DRAWN BY	DY/KD
CHECKED BY	
DRAWING NO.	EVSH-PL-11-E

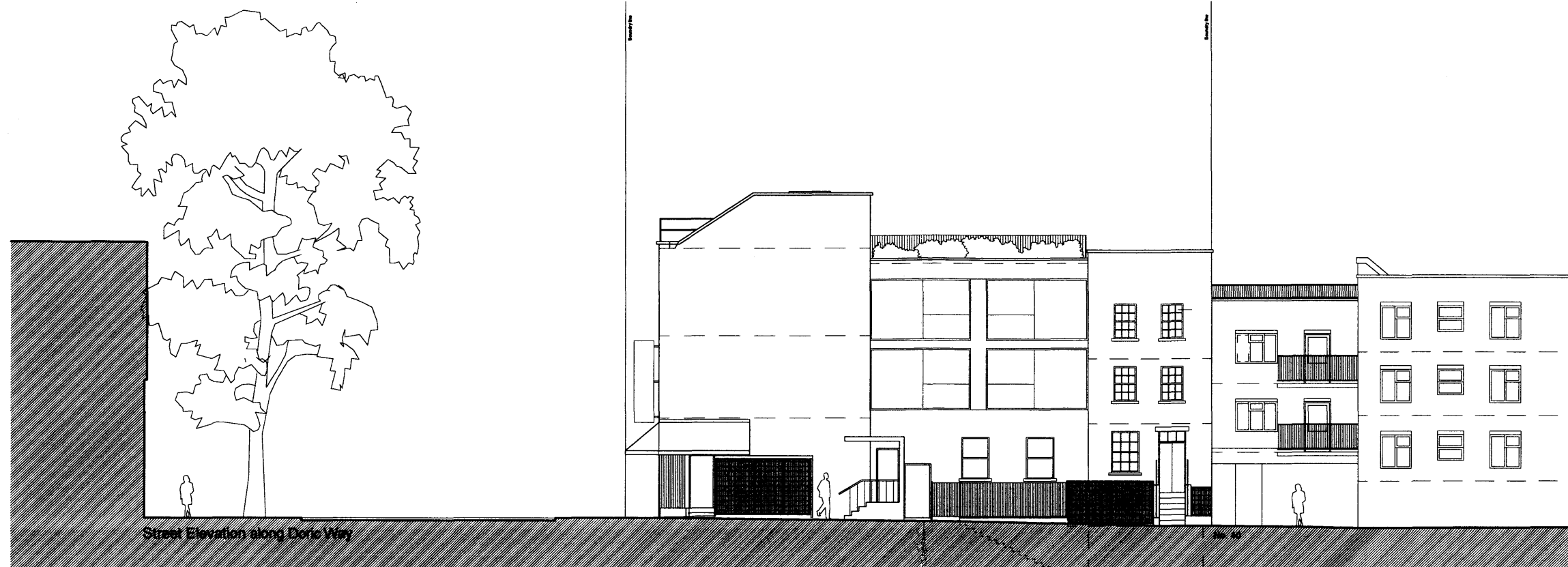


NOTES

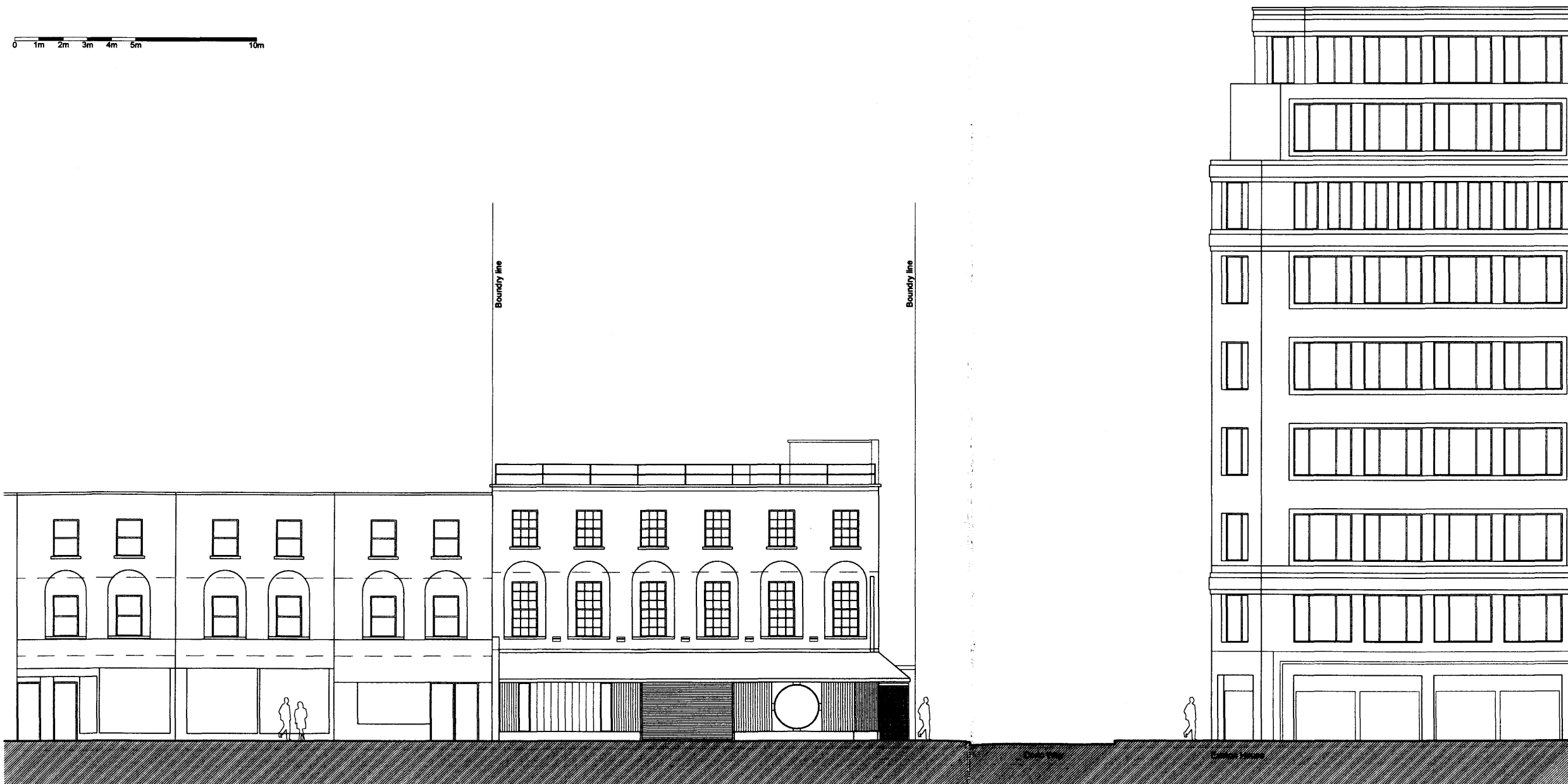
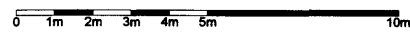
DO NOT SCALE FROM THIS DRAWING

PLANNING

REVISIONS:
 Rev A: 16.11.09 Bicycle storage moved outside the building.
 Rev B: 03.02.10 Amendments following comments from Planners (third floor omitted), levels updated, information on adjacent buildings added.
 Rev C: 14.04.10 Further revisions following plans updates, bicycle storage updated. KD
 Rev D: 26.05.10 Further revisions to bicycle store position and layout following site visit and comments from Clients and Planners. KD



Street Elevation along Doric Way



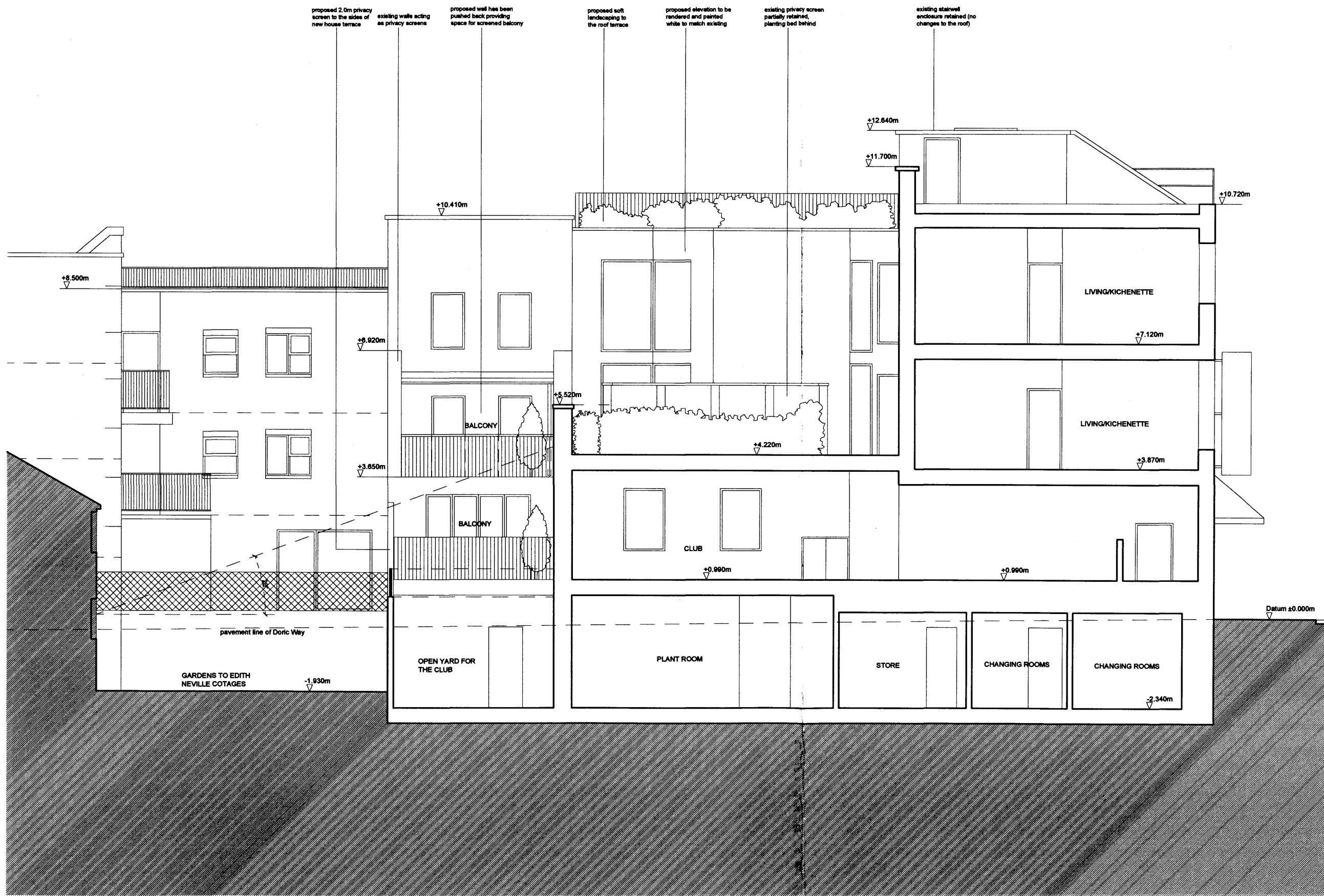
Martin Evans Architects	
18 Charlotte Road London EC2A 3PB tel 020 7729 2474	
JOB 34 -38 Eversholt Street Camden London NW1 1DA	
TITLE Proposed Street Elevations	
DATE	06.08.2009
SCALE	1:200 @ A3
DRAWN BY	DY/KD
CHECKED BY	
DRAWING NO.	EVSH-PL-12-D

NOTES

DO NOT SCALE FROM THIS DRAWING

PLANNING

REVISIONS:
 Rev A: 13.04.10 Amendments following changes to plans, notes added. KD
 Rev B: 26.05.10 Amendments to bicycle storage position and layout following site visit and comments from Clients and Planners. KD



Martin Evans
 Architects ©
 18 Charlotte Road
 London EC2A 3PB
 tel 020 7729 2474

JOB
 34 -38 Eversholt Street
 Camden
 London
 NW1 1DA

TITLE
 Proposed Section D-D

DATE	02.02.2010
SCALE	1:100 @ A3
DRAWN BY	DY/KD
CHECKED BY	
DRAWING NO.	EVSH-PL-14-B

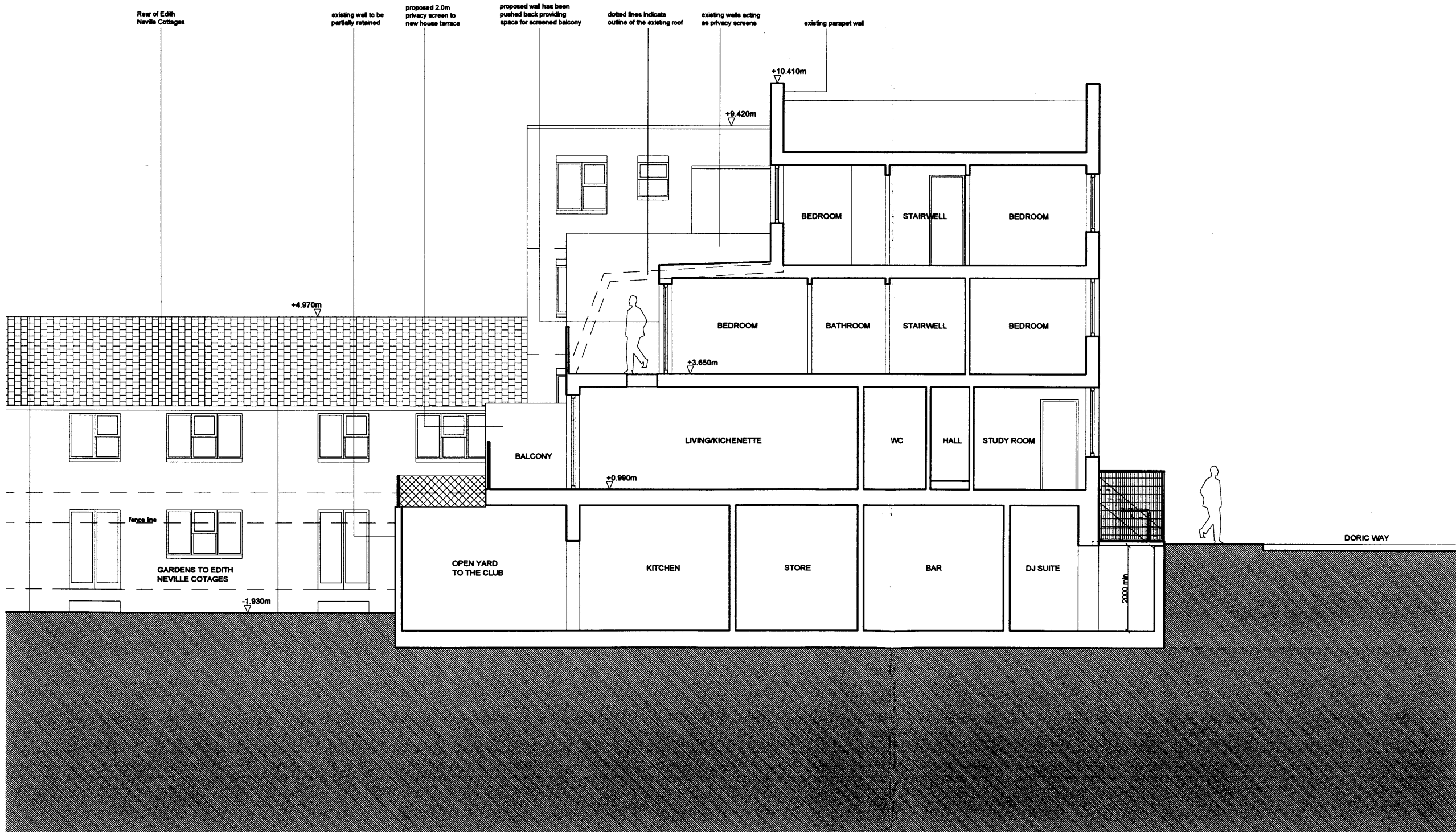


NOTES

DO NOT SCALE FROM THIS DRAWING

PLANNING

REVISIONS:
Rev A: 28.05.10 Amendments to bicycle storage position and layout following site visit and comments from Clients and Planners. KD



Martin Evans
Architects ©

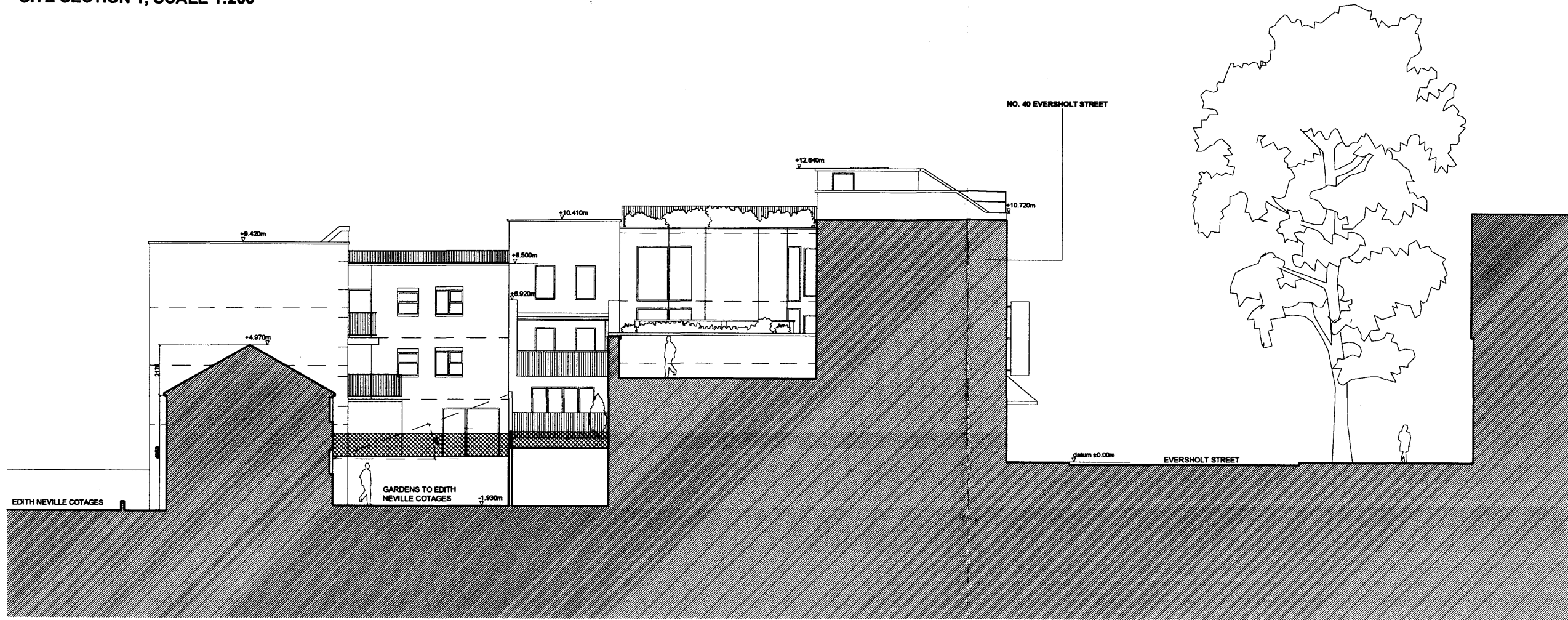
18 Charlotte Road
London EC2A 3PB
tel 020 7729 2474

JOB
34 -38 Eversholt Street
Camden
London
NW1 1DA

TITLE
Proposed Section E-E

DATE	02.02.2010
SCALE	1:100 @ A3
DRAWN BY	DY/KD
CHECKED BY	
DRAWING NO.	EVSH-PL-15-A

SITE SECTION 1, SCALE 1:200



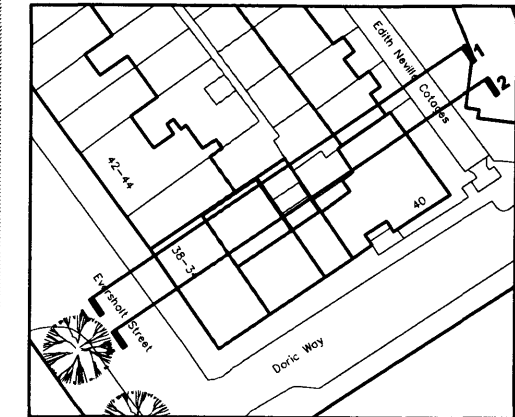
NOTES

DO NOT SCALE FROM THIS DRAWING

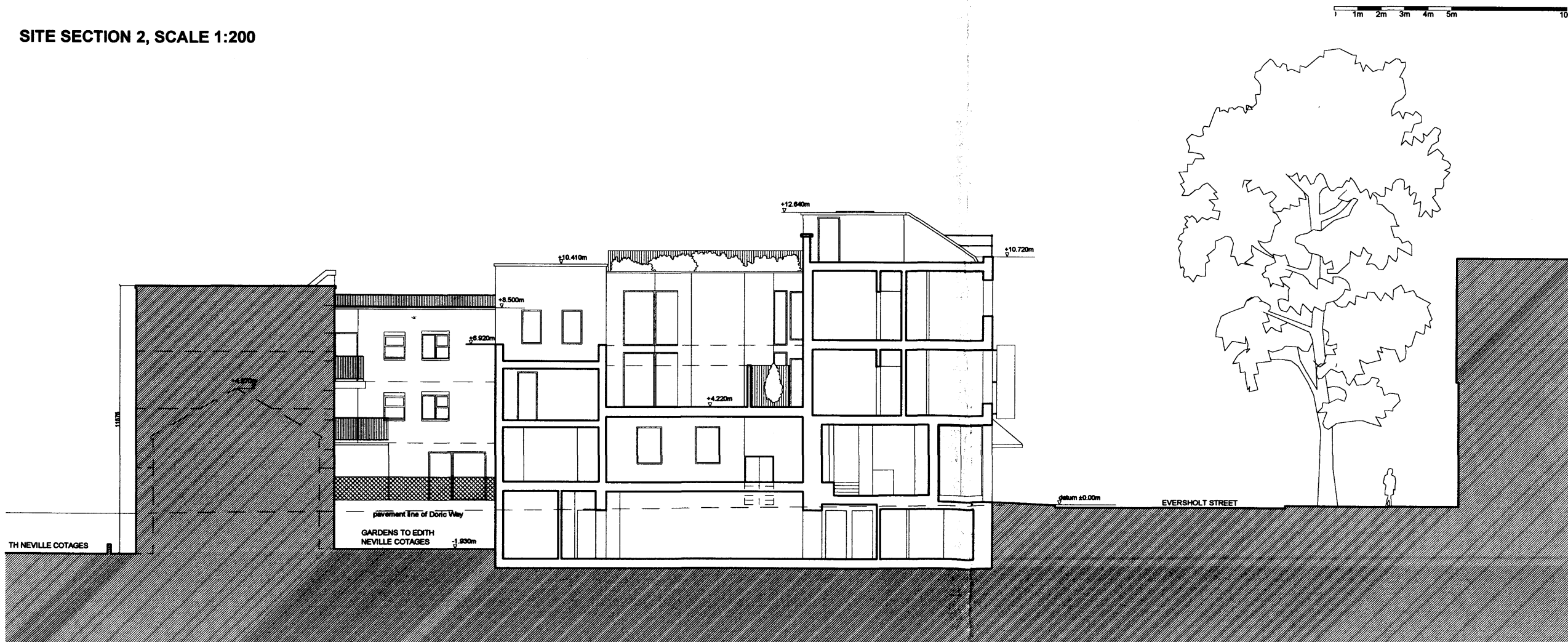
PLANNING

REVISIONS:
 Rev A: 13.04.10 Elevations updated following comments from planners. KD
 Rev B: 26.05.10 Revisions to bicycle storage position and layout following site visit and comments from Clients and Planners. KD

SITE PLAN, SCALE 1:1000



SITE SECTION 2, SCALE 1:200



Martin Evans
 Architects ©
 18 Charlotte Road
 London EC2A 3PB
 tel 020 7729 2474

JOB
 34 -38 Eversholt Street
 Camden
 London
 NW1 1DA

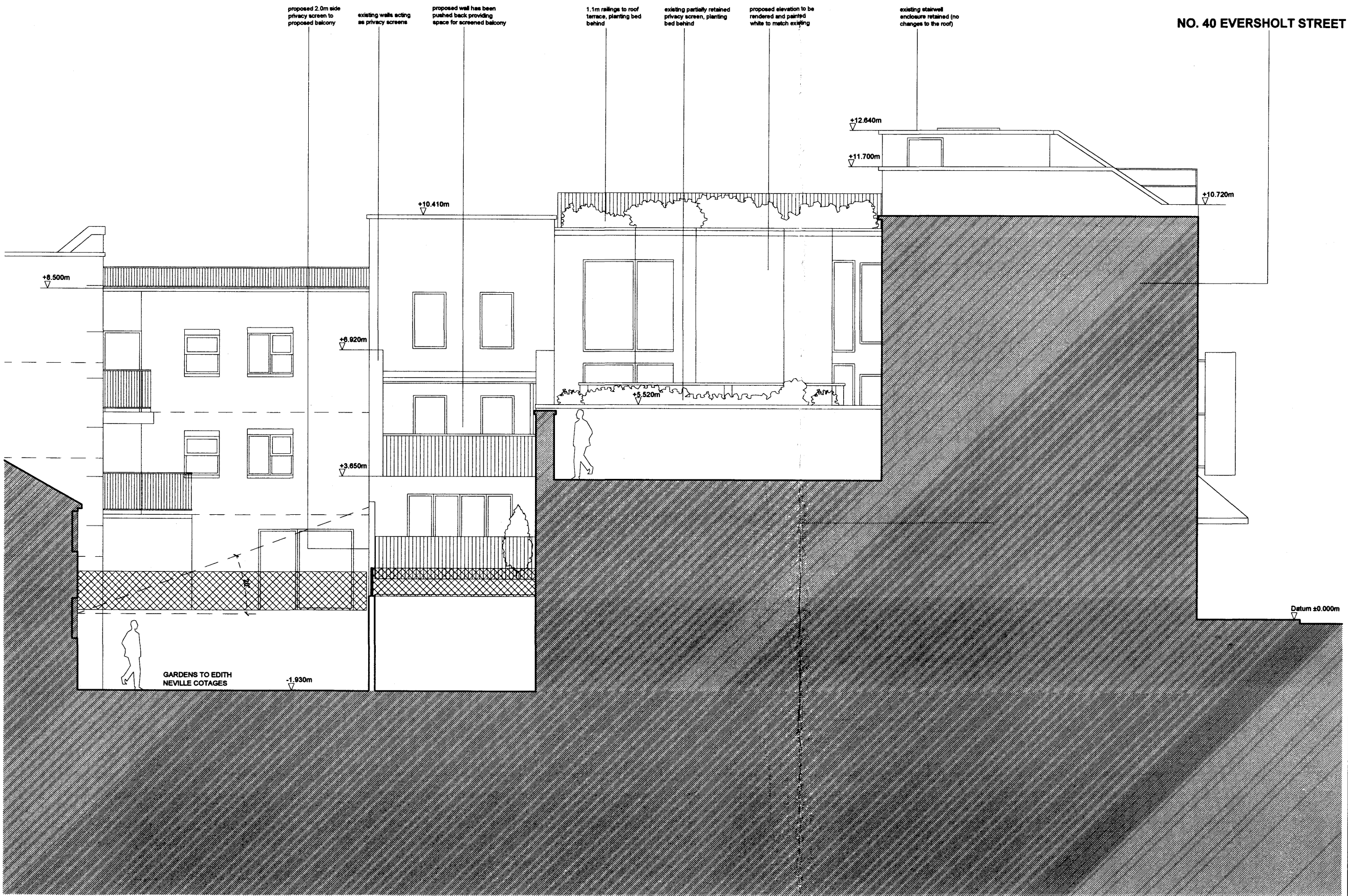
TITLE
 Proposed Site Section

DATE	29.01.2010
SCALE	1:200 @ A3
DRAWN BY	DY/KD
CHECKED BY	
DRAWING NO.	EVSH-PL-16-B

DO NOT SCALE FROM THIS DRAWING

PLANNING

REVISIONS:
 Rev A: 26.05.10 Amendments to bicycle storage position and layout following site visit and comments from Clients and Planners. KD



NO. 40 EVERSOLT STREET

Martin Evans Architects ©	
18 Charlotte Road London EC2A 3PB tel 020 7729 2474	
JOB 34 -38 Eversholt Street Camden London NW1 1DA	
TITLE Proposed Rear Elevation (section through NO. 40 Eversholt St.)	
DATE	02.02.2010
SCALE	1:100 @ A3
DRAWN BY	DY/KD
CHECKED BY	
DRAWING NO.	EVSH-PL-17-A

