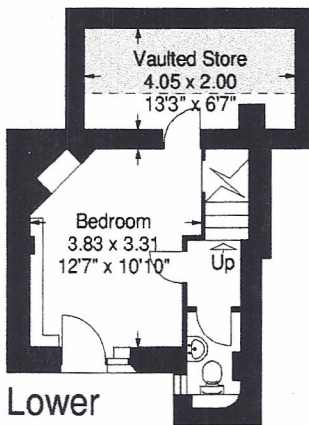


# Pond Square, London N6

Approximate Gross Internal Floor Area:  
126 sq.mts. / 1357 sq.ft.



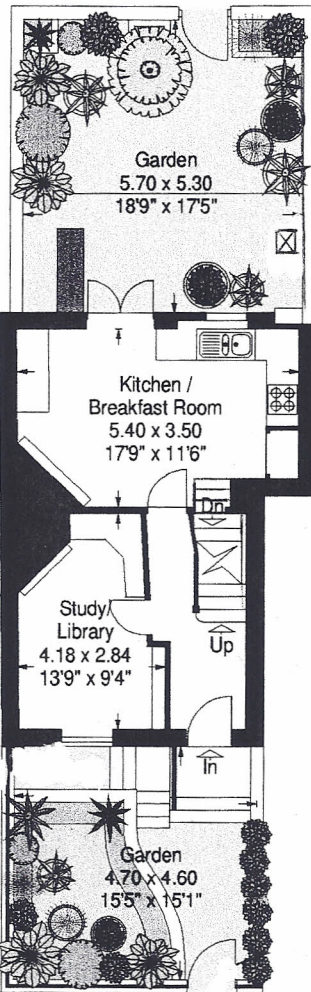
Reduced height area.  
(Below 1.5m)



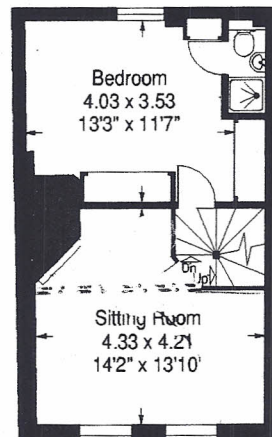
Lower  
Ground Floor

APPROX. SCALE

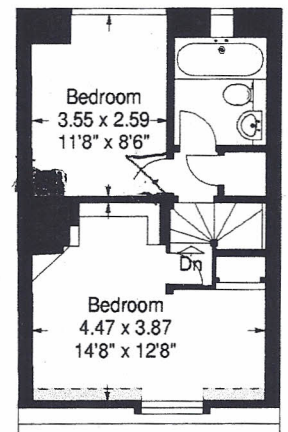
0 1 2 3 4 5 10Ft  
0 1 2 3M



Ground Floor



First Floor



Second Floor

LAYOUT PLAN

2370/3