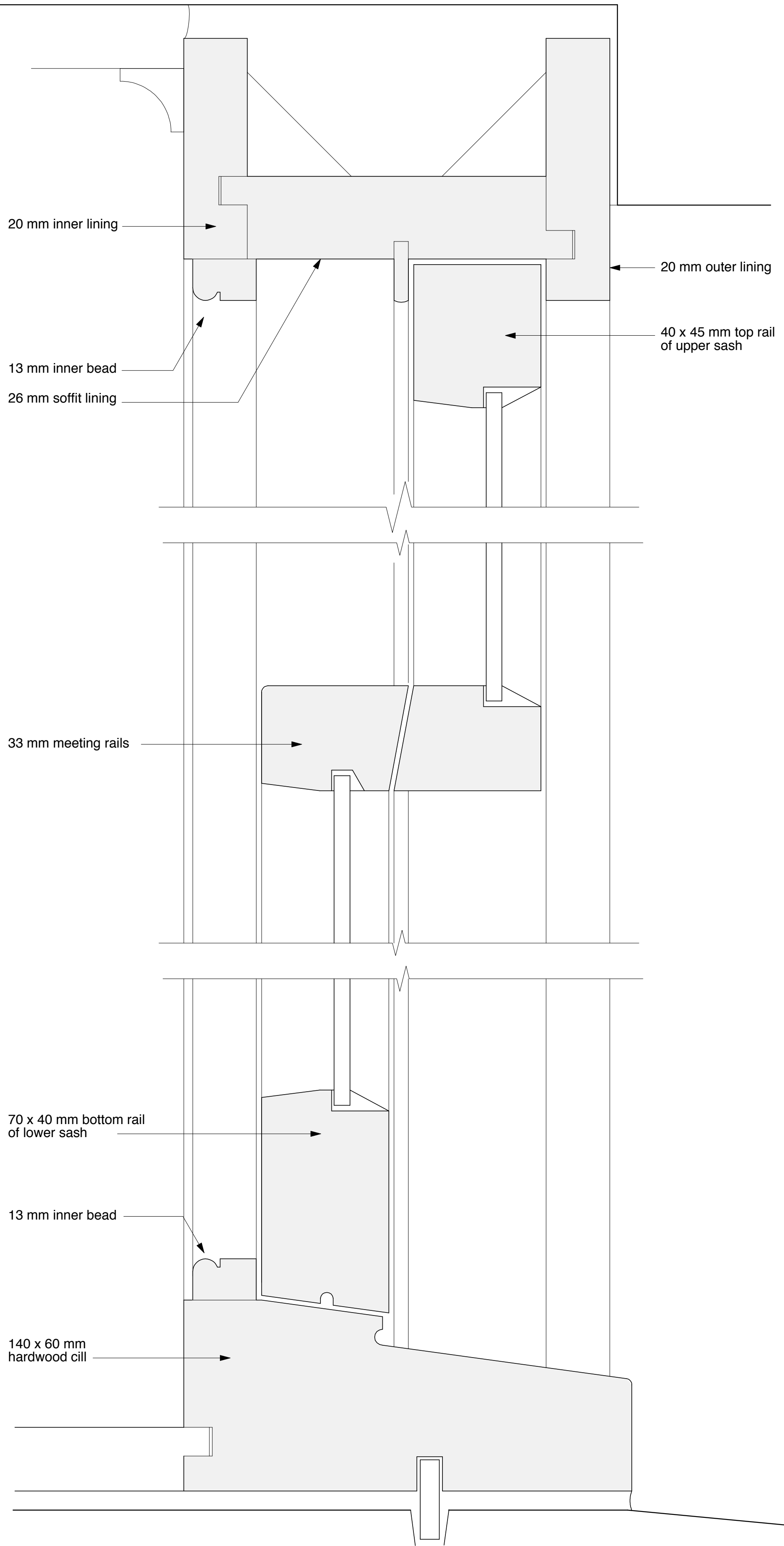


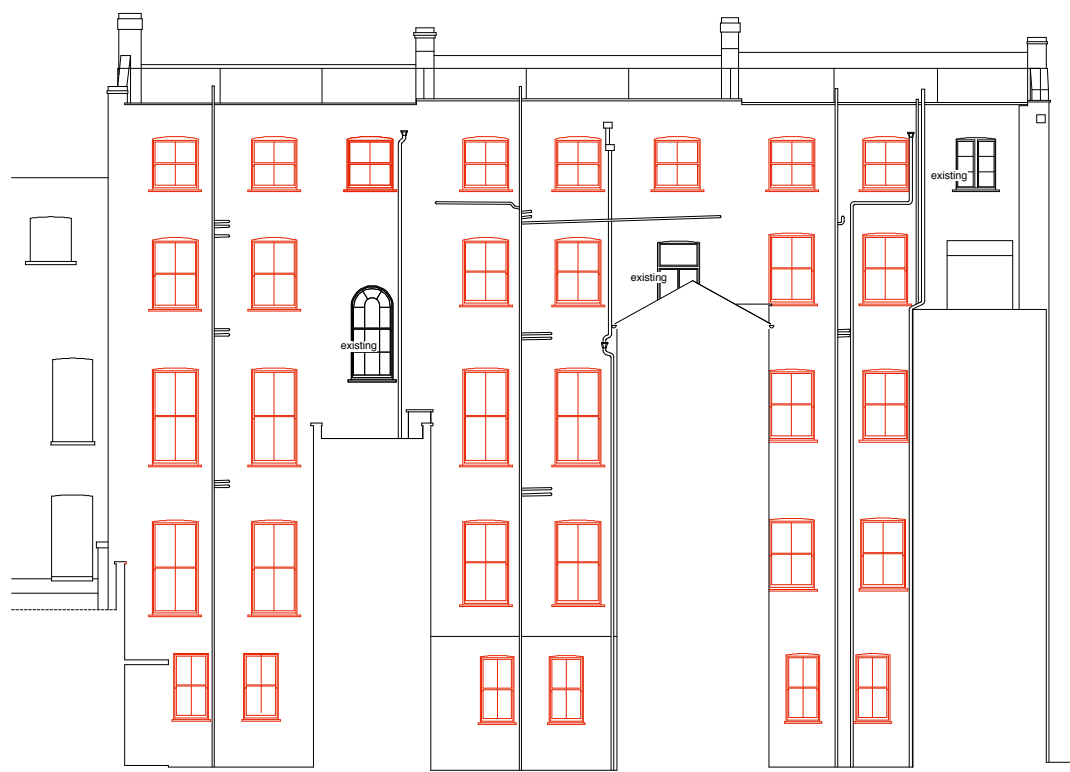
**ELEVATION** (Typical new/ reconstructed sash window)  
SCALE 1 : 10  
See windows drawn red on Key elevations opposite.



**DETAIL SECTION B - B**  
SCALE: FULL SIZE

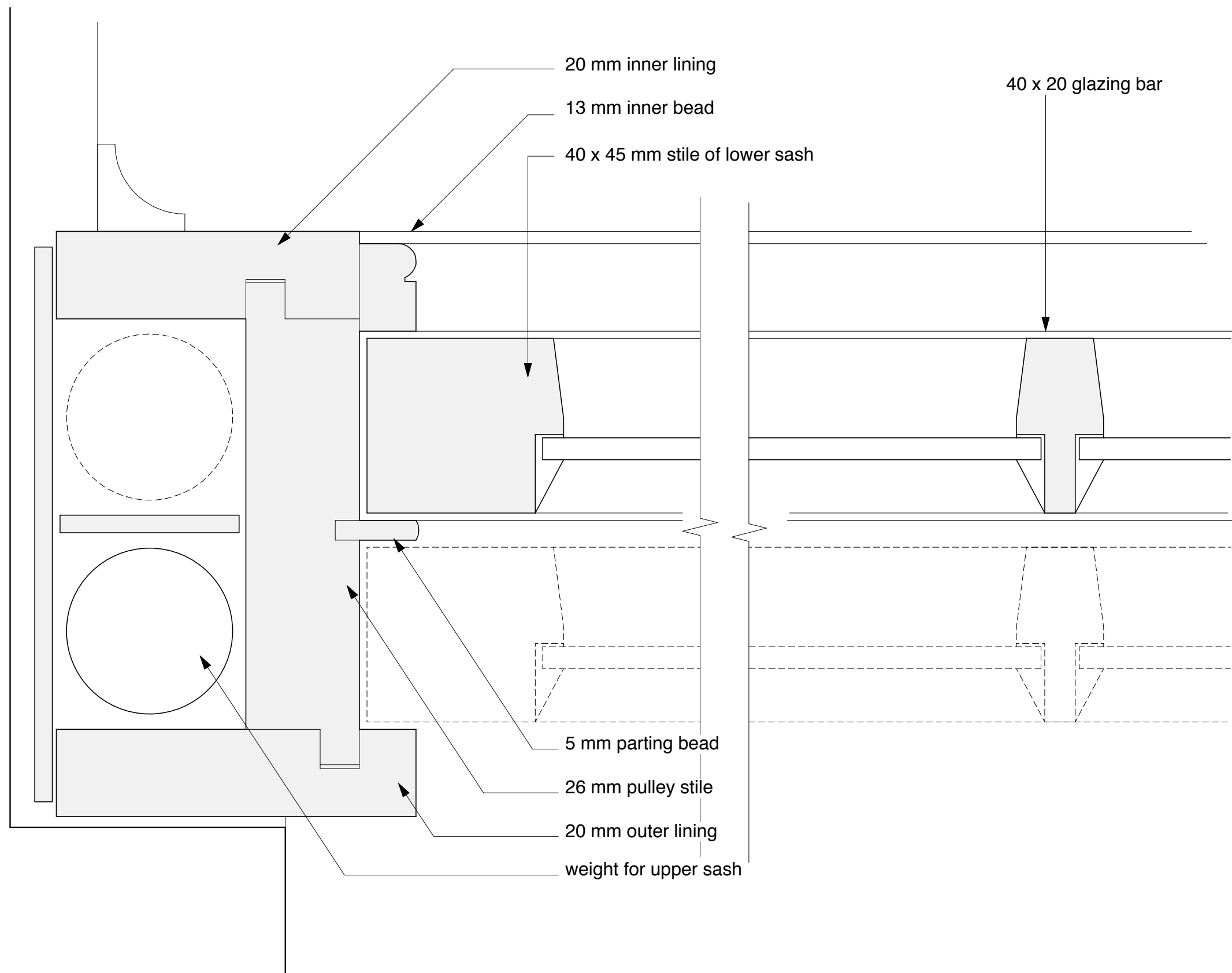


**KEY FRONT ELEVATION**



**KEY BACK ELEVATION**

All new/ reconstructed sash windows to original profiles, sizes and details.  
Glazing pattern to be standardised to two panes over two.  
Painted pressure treated softwood or durable hardwood frames; painted hardwood cills.



**DETAIL PLAN A - A**  
SCALE: FULL SIZE

letter	date	revision	initial
	June 2010		
74 -76 GUILFORD STREET			
PROPOSED WINDOW DETAILS			
Full Size & 1:10 @ A1			
job no.	1101	drawing no.	D 014