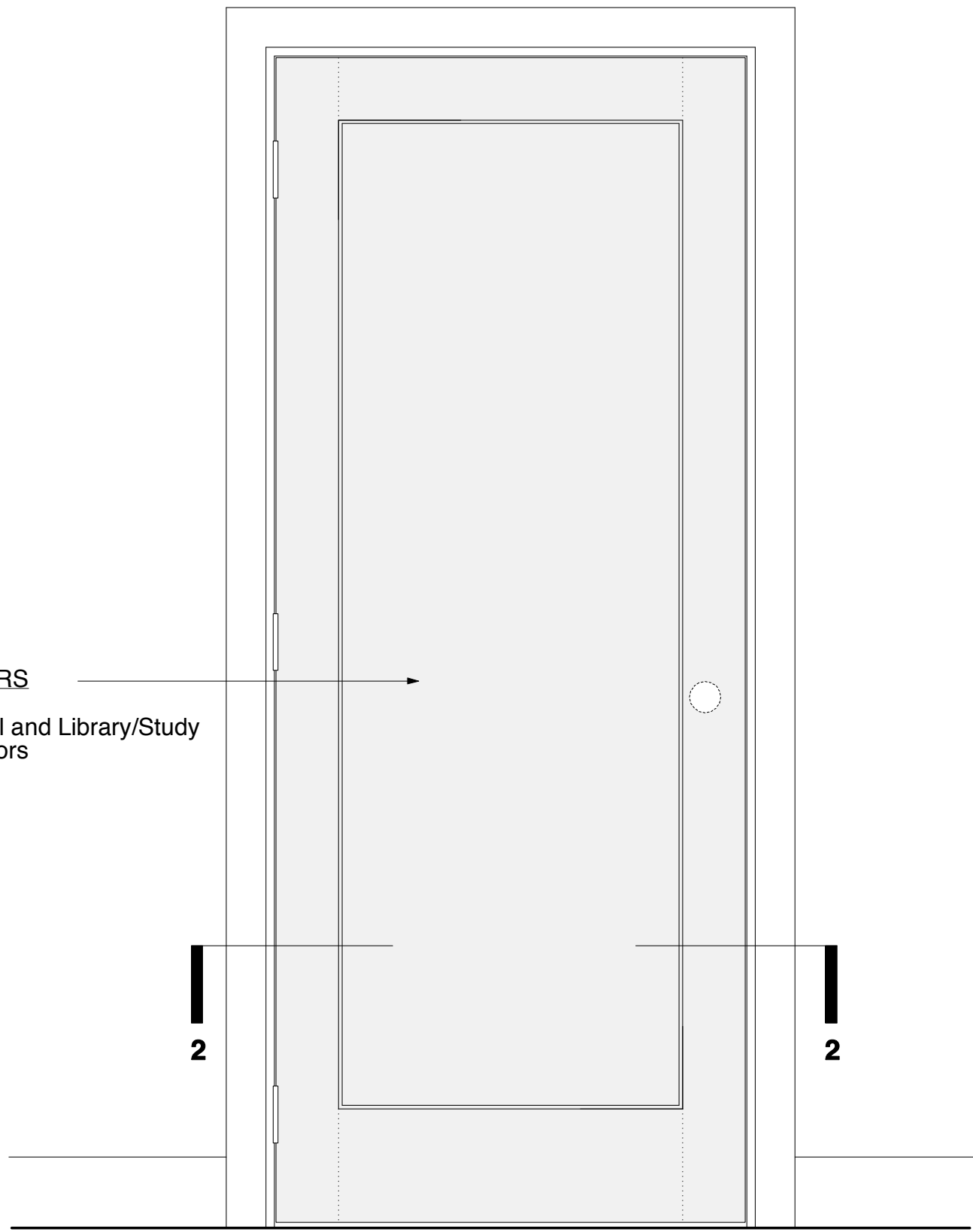
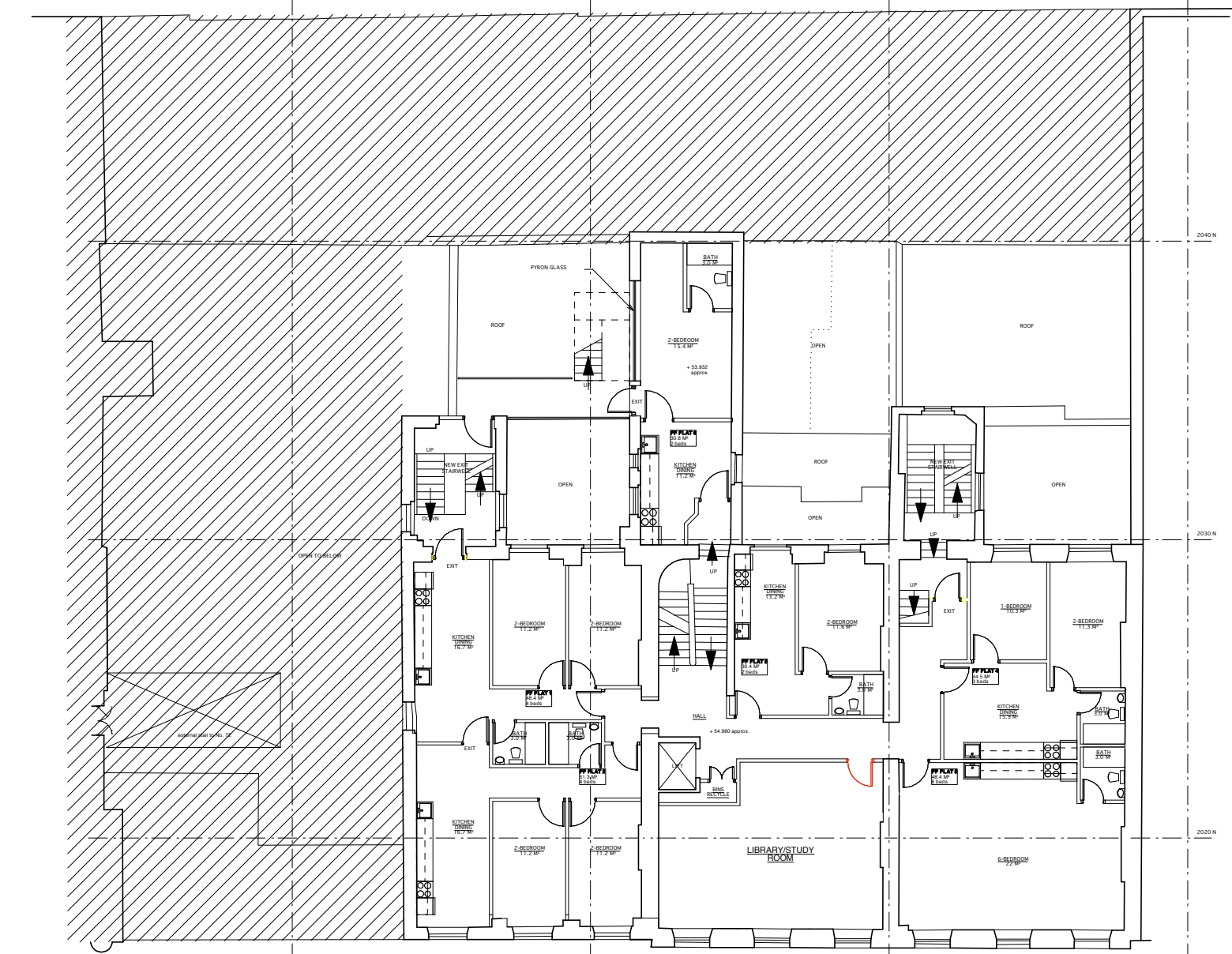


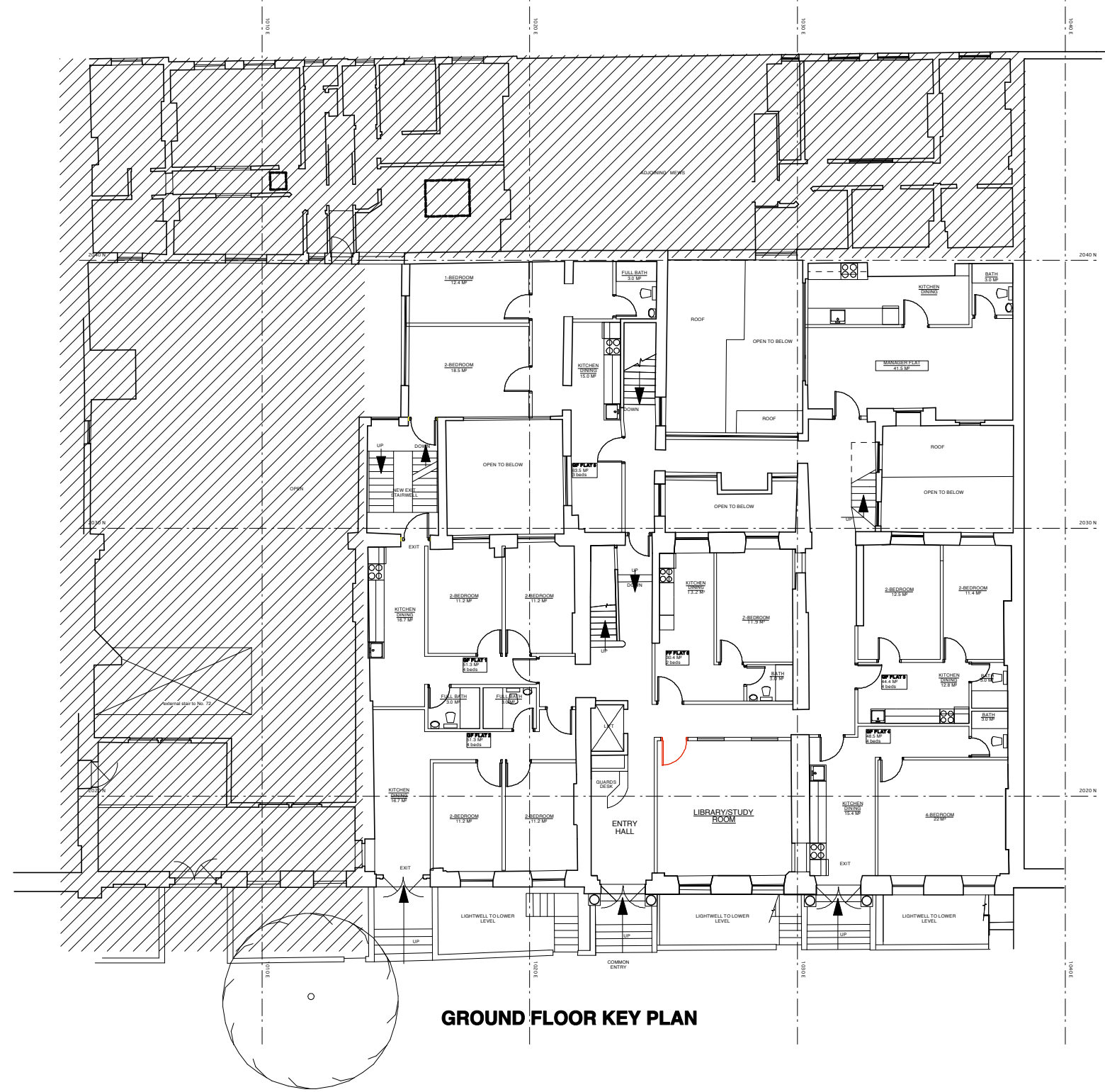
PROPOSED PANELLED DOORS 1:10 @ A1
to Entrance Hall and Library/Study Rooms on
Ground and First Floors - see red lined doors
on key plans opposite



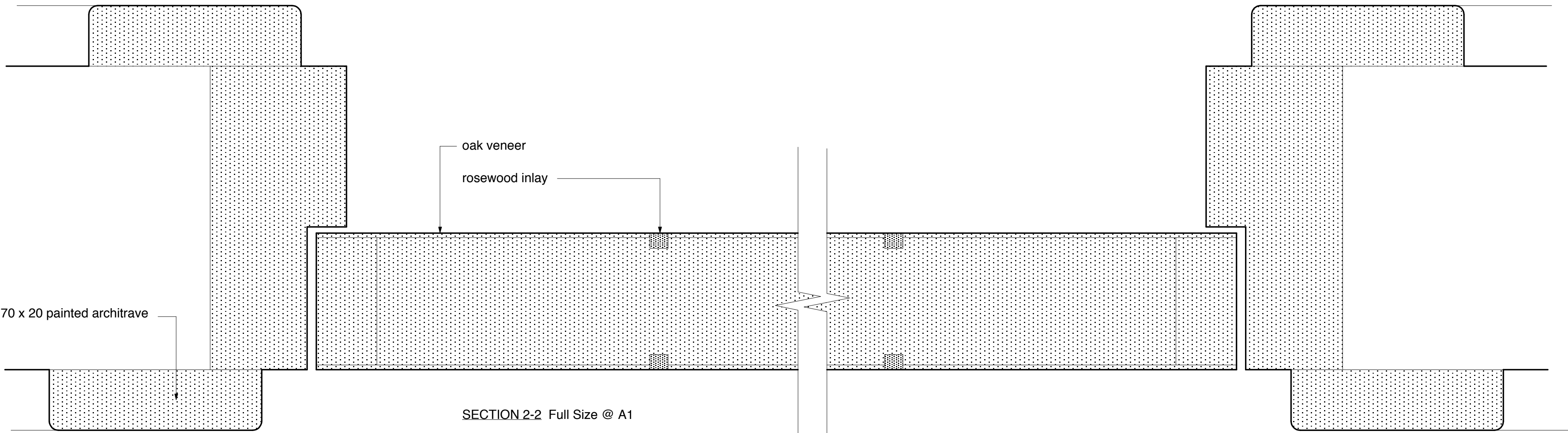
PROPOSED VENEERED DOORS
to all areas except Entrance Hall and Library/Study
Rooms on Ground and First Floors



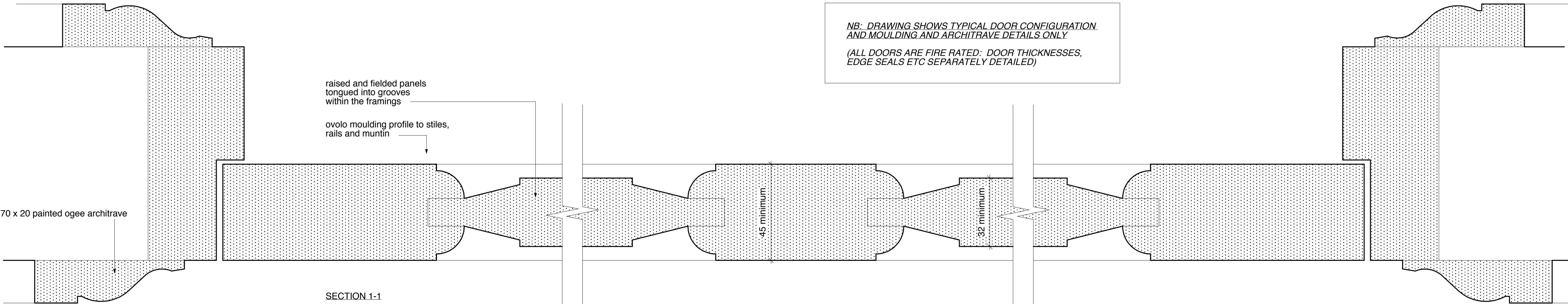
FIRST FLOOR KEY PLAN



GROUND FLOOR KEY PLAN



SECTION 2-2 Full Size @ A1
veneered door with rosewood inlay, painted frame
and architraves



SECTION 1-1
painted panelled hardwood door, frame and architraves

NB: DRAWING SHOWS TYPICAL DOOR CONFIGURATION
AND MOULDING AND ARCHITRAVE DETAILS ONLY
(ALL DOORS ARE FIRE RATED: DOOR THICKNESSES,
EDGE SEALS ETC SEPARATELY DETAILED)

No dimension should be scaled off this drawing
Site dimensions must be checked before
manufacture. If in doubt please ask.

letter	date	revision	initial
	June 2010		
job name			
74 -76 GUILFORD STREET			
title			
PROPOSED INTERNAL DOOR DETAILS			
scale			
Full Size & 1:10 @ A1			
job no.		drawing no.	
1101		D 010	
Casson Conder Partnership Architects 32a Thurloe Place London SW7 2HJ Tel 020 7584 4581			