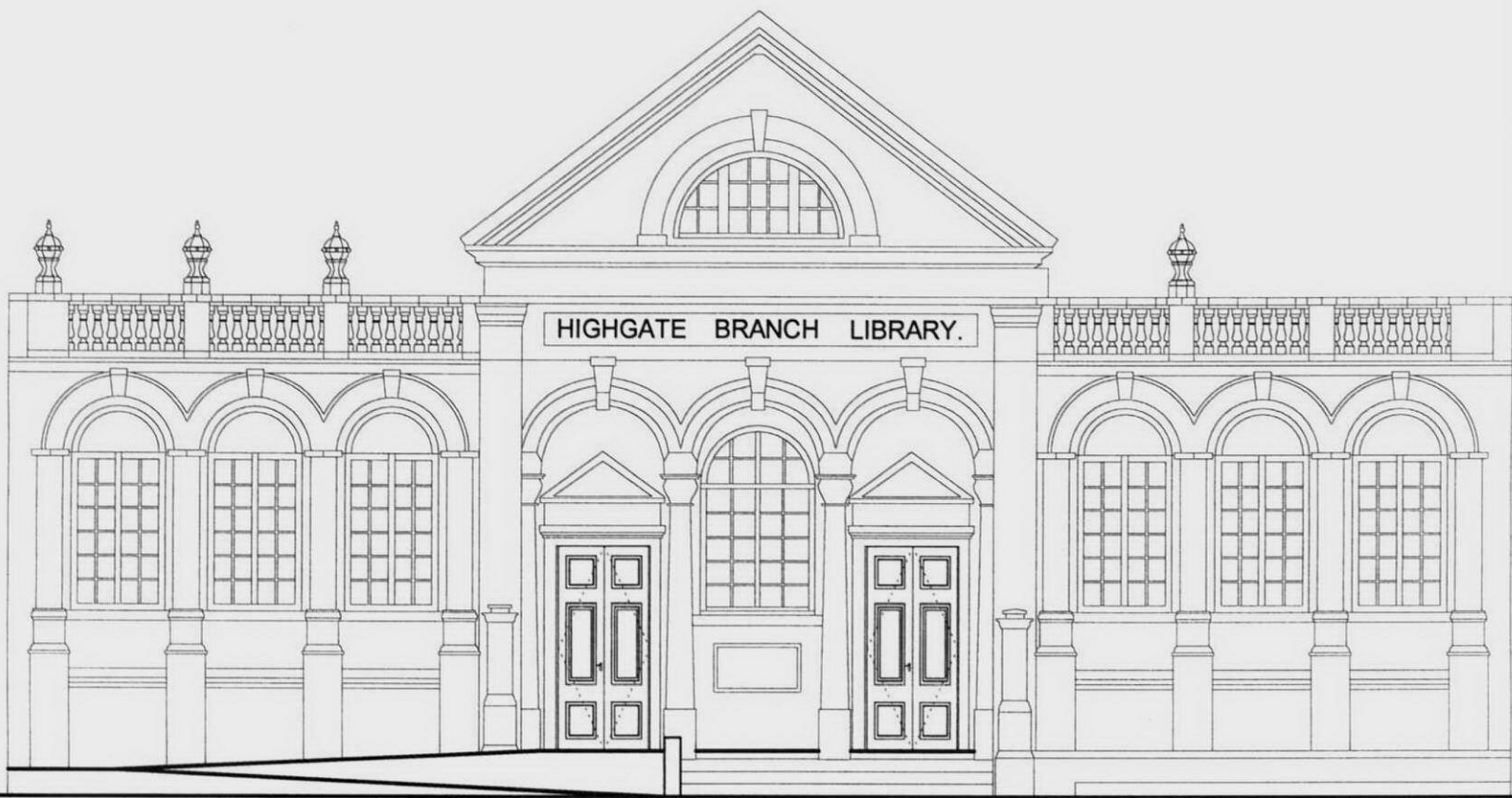
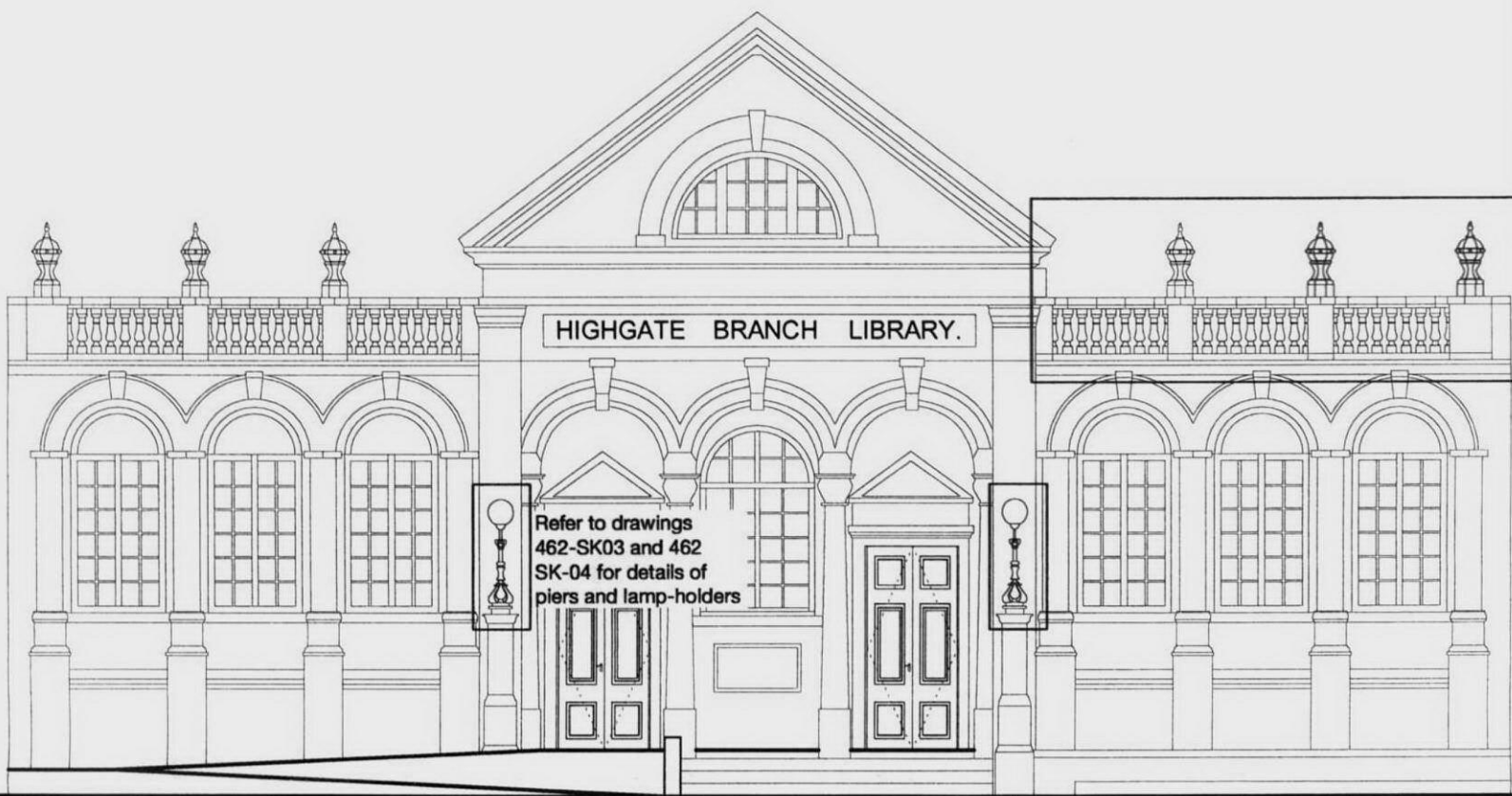


Notes

1. This drawing has been produced from survey of key dimension at ground level and photographs. DO NOT SCALE FROM THIS DRAWING.



MAIN ELEVATION AS EXISTING



MAIN ELEVATION AS PROPOSED

LONDON BOROUGH OF CAMDEN HIGHGATE BRANCH LIBRARY Dannatt, Johnson Architects 52c Borough High Street, London, SE1 1XN Telephone (020) 7357 7100 Fax (020) 7357 7200	ELEVATIONS STATUS: PLANNING - LBC	Drawing Number 462-WD-02	Revision -
		Drawn CF	Checked Scale 1:100 @ A3 Date MAY 10