

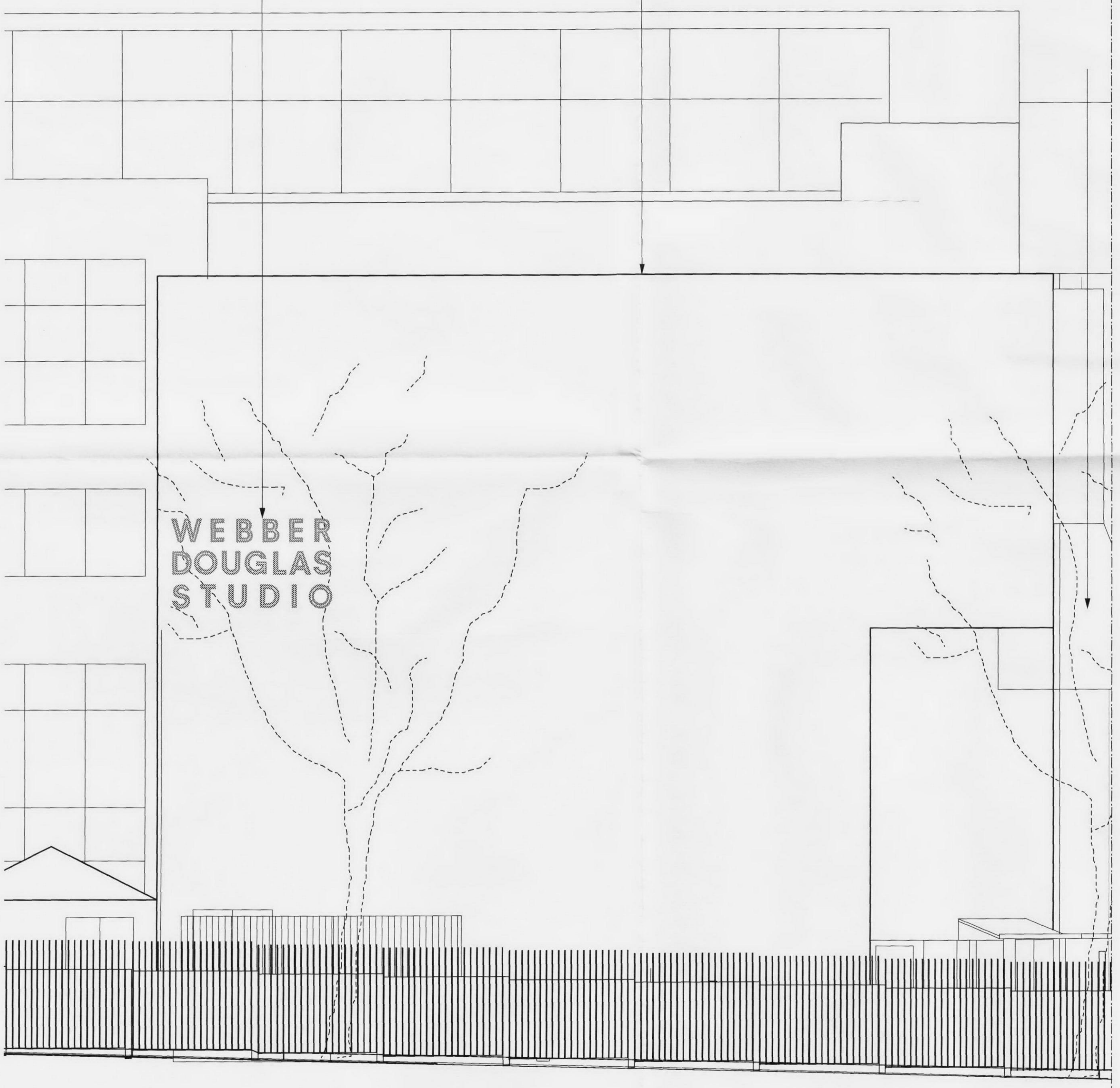
NOTE:
DO NOT SCALE OFF THIS DRAWING
CONTRACTOR TO VERIFY ALL DIMENSIONS ON SITE
CROSS REFER TO ALL RELEVANT SPECIFICATIONS, SCHEDULES,
DETAILS AND CONSULTANTS DRAWINGS
THIS DRAWING IS BASED ON SURVEY INFORMATION BY OTHERS

NEW SIGNAGE
ILLUMINATED WITHIN LETTERING
SEE SUPPLIER'S SPECIFICATION

PROPOSED SIGN TO SIDE
WALL OF EMBASSY THEATRE
SEE ALSO 0809_P52

EXISTING SIGNAGE AS PLANNING
APPROVAL REF 2009/5021/A

EXISTING
EMBASSY STUDIO/
WEBBER DOUGLAS STUDIO



ETON AVE.

ELEVATION 9
EXISTING EMBASSY STUDIO/ WEBBER DOUGLAS STUDIO
SOUTH
SCALE 1:50@A1



ETON AVE.

ELEVATION 10
EXISTING MAIN ENTRANCE
SOUTH
SCALE 1:50@A1

EXISTING
MAIN ENTRANCE

REV	DESCRIPTION	BY	DATE
A	General Update	NK	12.01.10

PROJECT
CENTRAL SCHOOL OF SPEECH AND DRAMA
64 ETON AVE. NW3 3HY

DRAWING TITLE
**Elevation 9/10: Proposed Webber Douglas Studio/
Main Entrance, South facades**

STATUS
DRAWN ELS SCALE 1:50 @ A1 DATE 23.09.09
DWG. NO **0809_P48** REV **A**



CULLUM AND NIGHTINGALE ARCHITECTS LTD
26 HARRISON STREET, LONDON WC1H 8JW
CullumNightingale.com
TEL 020 7812 1102 FAX 020 7278 3912