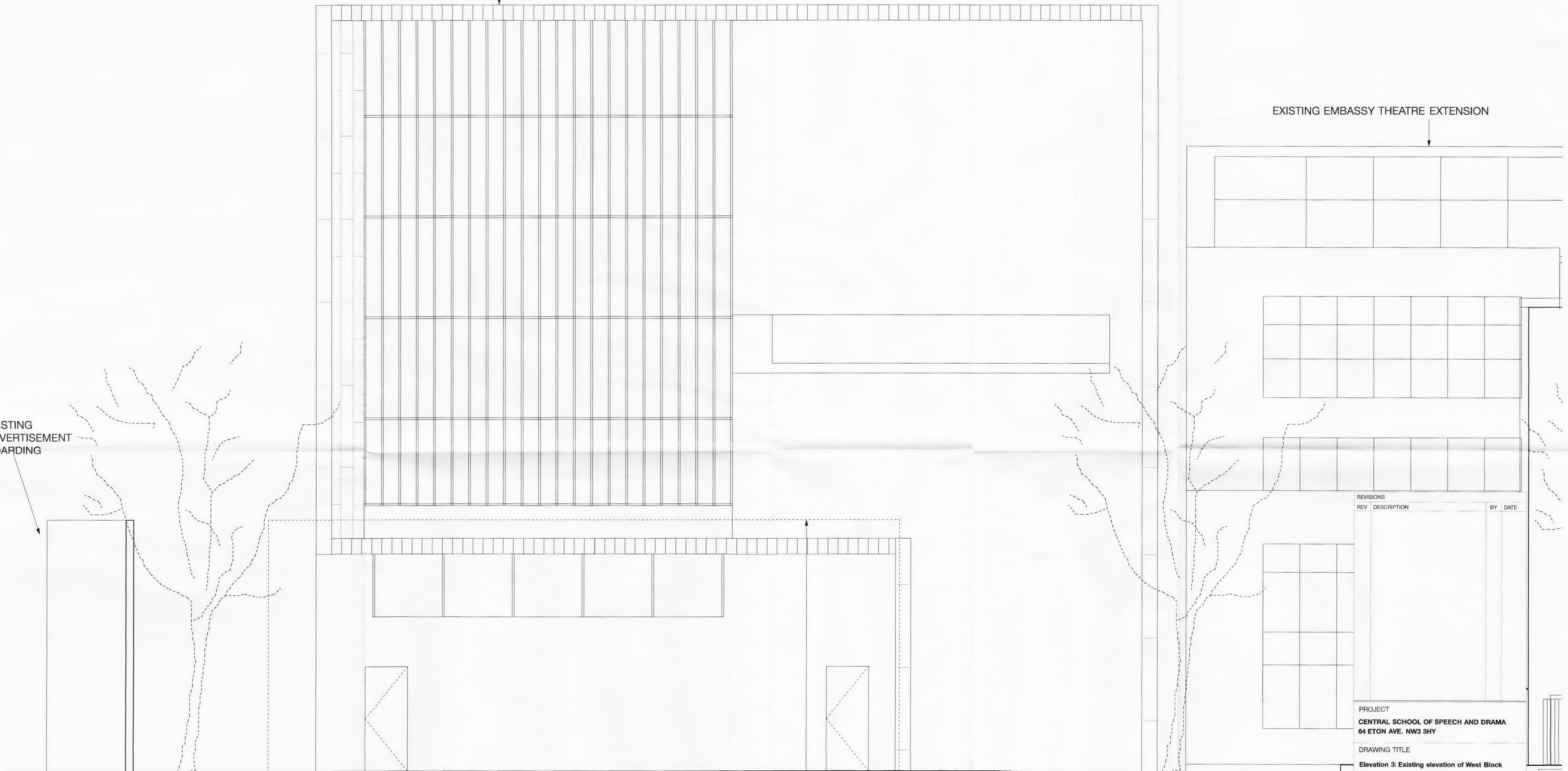


NOTE
 DO NOT SCALE OFF THIS DRAWING
 CONTRACTOR TO VERIFY ALL DIMENSIONS ON SITE
 CROSS REFER TO ALL RELEVANT SPECIFICATIONS, SCHEDULES,
 DETAILS AND CONSULTANTS DRAWINGS
 THIS DRAWING IS BASED ON SURVEY INFORMATION BY OTHERS

EXISTING WEST BLOCK

EXISTING EMBASSY THEATRE EXTENSION

EXISTING
 ADVERTISEMENT
 HOARDING



EXISTING
 NORMAN COLLINS BUILDING
 SHOWN DOTTED

REVISIONS			
REV	DESCRIPTION	BY	DATE

PROJECT
CENTRAL SCHOOL OF SPEECH AND DRAMA
 64 ETON AVE. NW3 3HY

DRAWING TITLE
Elevation 3: Existing elevation of West Block
 South Facade

STATUS
 DRAWN ELS SCALE 1:50 @ A1 DATE 23.09.09

DWG.NO **0809_P43** REV



CULLUM AND NIGHTINGALE ARCHITECTS LTD
 26 HARRISON STREET, LONDON WC1H 8JW
 CullumNightingale.com
 TEL 020 7812 1102 FAX 020 7278 3912

ELEVATION 3
 WEST BLOCK EXISTING ELEVATION
 SOUTH
 SCALE 1:50@A1