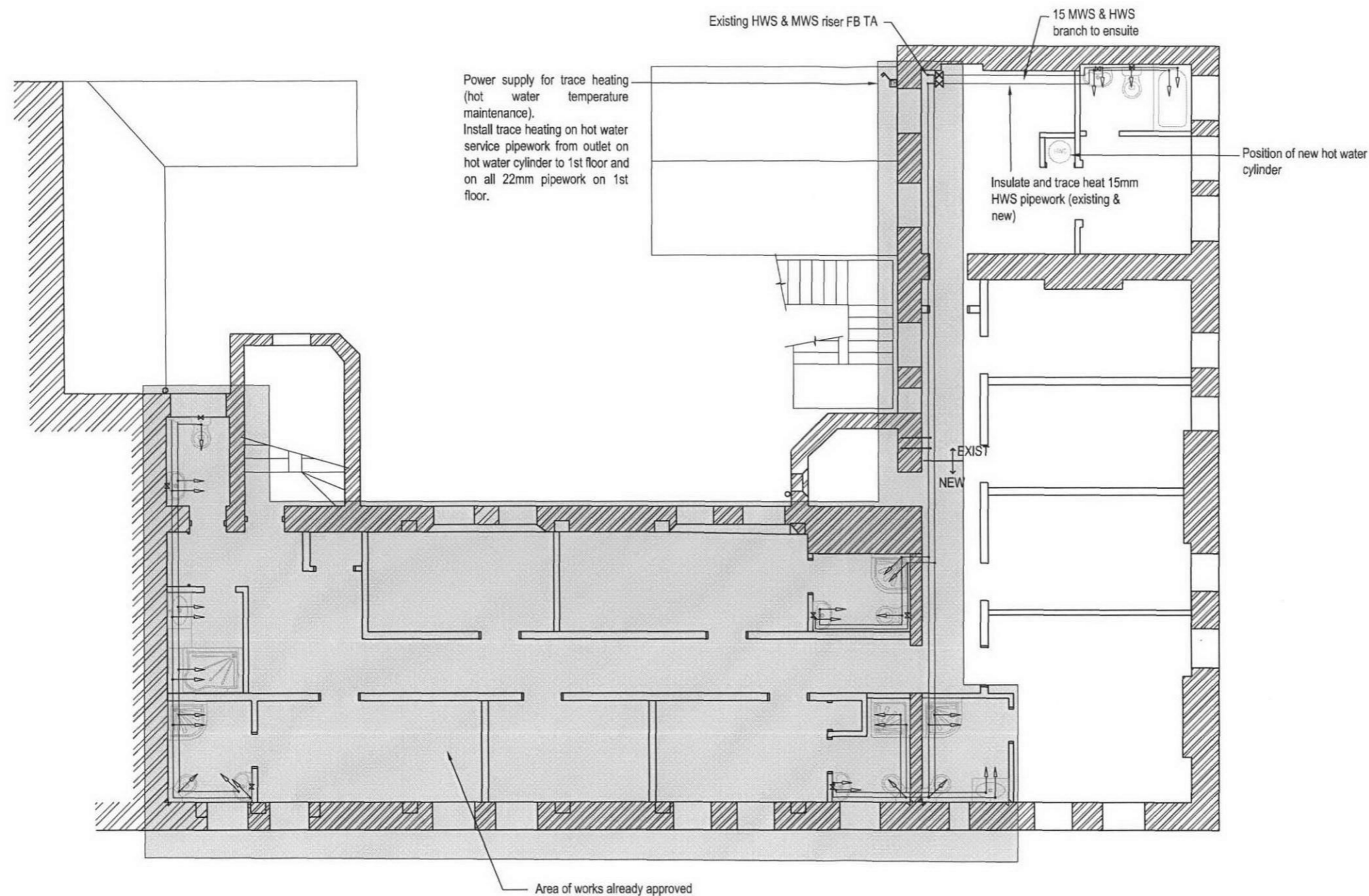


COPYRIGHT

© This drawing is the copyright of the AKSWard, it may not be copied altered or reproduced in any way without their written authority.
This drawing must not be scaled. Use figured dimensions only. If in doubt ASK!

NOTES

1. This drawing is to be read in conjunction with all relevant AKSWard drawings and specification(s) prefixed L101414
2. All setting out to be in accordance with the Architects drawings. Any discrepancies between the Engineers and the Architects drawings to be referred to the Architect before proceeding. Dimensions must not be scaled.
3. All pipework shall be to EN 1057 aligning with the former copper table X with appropriate fittings. Where concealed plastic pipe of equivalent size may be used.



Proposed First Floor Layout

1:100 @ A3

P1 Preliminary

| Rev. | Amendment | Dm | Chkd | Date |
|------|-----------|----|------|------|
| | | | | |

| Drg Status | Preliminary |
|------------|-------------|
| | |

AKSWard²

CONSTRUCTION CONSULTANTS

One West Smithfield
London
EC1A 9JU

Tel: 020 7236 0161
Fax: 020 7236 3239
e-mail: london@aksward.com
web: www.aksward.com

London
Hitchin
Oxford
Southampton

Client/Architect **OCTOBER GALLERY TRUST**

Project **OCTOBER GALLERY
24 OLD GLOUCESTER STREET
LONDON, WC1N 3AL**

Title **NEW HOT & COLD
WATER SUPPLY TO 1ST FLOOR**

| Scales | A1 | NTS | A3 | 1:100 |
|--------|----|-----|----|-------|
| | | | | |

| Reviewed Scheme | MW | Date | Sept 08 |
|-----------------|----|------|---------|
| | | | |

| Reviewed Final | Date |
|----------------|------|
| | |

| Project No. | Drg No. | Rev. |
|----------------|------------|-----------|
| L101414 | 112 | P1 |