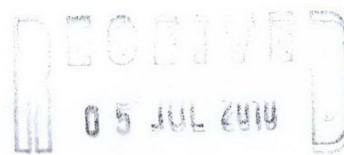


'Securus'

flat panel fence system

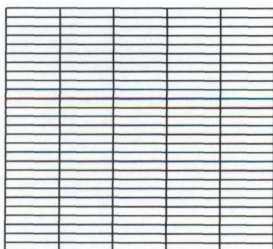
The CLD Securus flat panel and post system offers an extremely high level of security and rigidity, without compromising on the aesthetic appeal of mesh systems.



Securus flat panel system in situ



Securus flat panel system detail



Elevation and section of panel

Description

The flat Securus system has been used in many and varied applications including perimeter security to schools and police stations. The flat Securus fence system has become increasingly popular as a rebound surface for sports facilities supported on A.I. rails (replacing the conventional rebound board), thus extending the effective working life of the facility, lowering maintenance costs and providing a more aesthetically pleasing appearance in built-up areas.

Finish

High aluminium content galvanising giving four times the life of BS 443. This finish is free of the sharps and irregularities found in the hot dip galvanising process. It also provides an excellent base for polyester powder-coating.

The standard colours are Green RAL 6005 and Black RAL 9005. RAL range of colours available.

Dimensions

Heights:	1270, 1830, 2030, 2440, 3000 mm
Other heights:	0 - 5.2 m available on request
Panel length:	2515 mm
Mesh size:	76.2 x 12.5 mm
Wire diameter:	4 mm (verticals and horizontals)
Top edge projection:	Nil. Wire is flush on all edges.

Specification clauses

To be read with Preliminaries/General conditions

Open mesh steel panel general purpose fencing/gates

- Manufacturer & Ref: CLD Fencing Systems, Supplies, Tel. 01270 764751, CLD Securus Flat Panel System.
- Height:* Nominal height:* Mesh & wire: 76.2 x 12.5 mm mesh; 4 mm wire, high aluminium content galvanised and polyester powder-coated to minimum 80 microns.
- Posts: 80 x 60 mm Patented Rolled Section, hot dip galvanised after manufacture and polyester powder-coated.
- Fixings: M8 cup square bolt with permacone nut, galvanised.
- Maximum post centres: 2.52 m.
- Set posts: Set posts in holes 300 mm diameter x 750 mm deep, filled not less than half the depth with concrete, as clause 620.
- Bottom of fencing to be: approx. 50 mm above final ground level.
- Other requirements: PPC Colours Green RAL 6005 or galvanised only†.

* See specification, above, for available heights.

† Delete as required.

For further information, telephone CLD on 01270 764751 or fax on 01270 757503 or email sales@cld-fencing.com

All information correct at time of going to press. We reserve the right to alter specifications without notice.

'Securus' flat panel fence system posts

Posts

For the 'Securus' flat panel system, CLD offers their own unique state of the art post. A patented roll formed section designed to facilitate ease of installation, providing maximum security when combined with security fastenings.

Description

The CLD 'Securus' post is a flanged rolled hollow section formed out of a high grade steel strip (40% higher yield than conventional hollow section), cold rolled with 25 mm integral slotted frames each side with a centre recess, allowing panels to be fitted independently of each other providing a flush face and eliminating distortion in the panel. Panels are attached using M8 x 25 cup square galvanised bolts and security clips, washers and permacone fixings.

Finishes

All posts are hot dipped galvanised and polyester powder-coated either to match or contrast with the panels.

Dimensions

Posts:	80 x 60 mm special flanged section 'Patent applied for'
Corner posts:	80 x 80 mm Standard RHS section
Post centres:	2520 mm

Sloping ground

Panels can be stepped as required on the post system. Where gradients exceed 1:16, it is recommended that either taller panels are part-buried or additional posts be used. Panels can also be sloped to the following gradients, within the tolerance of the post section:

1.8 m high	1 in 45
2.0 m high	1 in 50
2.4 m high	1 in 60
3.0 m high	1 in 75

Variations

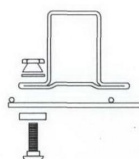
The posts are available in different lengths to accommodate panel heights and ground conditions.

- wall fixing plates, cranked posts or base plated
- cranked or straight extensions for barbed or razor wire
- cranked panels

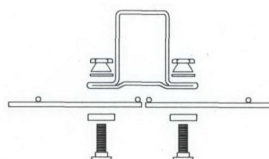
Posts made from standard sections are available.



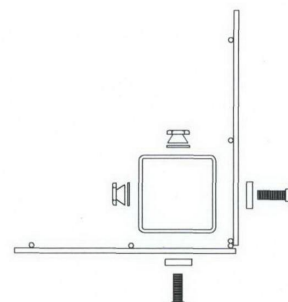
Exploded view of post for flat Securus fence system



Plan of end post



Plan of inter post



Plan of external corner