

APPENDIX TO
DESIGN AND ACCESS STATEMENT
RESTORATION AND EXTENSIONS

42 PHOENIX ROAD

LONDON



MAY 2010

CLC
DESIGN, CONSTRUCTION MANAGEMENT
BUILDING CONSULTANTS

The Design Office, 19 Heol-Y-Deri, Rhiwbina,
Cardiff, CF14 6HA Tel: 02920 623271 Fax: 02920 620390
E-mail: clcdesign@btconnect.com



APPENDIX

CONTENTS

- 1) ARCHITECTURAL ASSESSMENT OF SOMERS TOWN BY CLC.**
- 2) CONSTRUCTION MANAGEMENT PLAN BY MIKE MILLS CONTRACTS.**
- 3) RENEWABLE ENERGY STATEMENT BY THE JONES PARTNERSHIP
(SWANSEA) LTD.**
- 4) BS5837 TREE SURVEY BY BEN ABBATT.**
- 5) STUDENT MANAGEMENT PLAN BY DUNCAN PITTAWAY, THE FINDLAY
ESTATE COMPANY.**
- 6) JUSTIFICATION STATEMENT BY DUNCAN PITTAWAY, THE FINDLAY
ESTATE COMPANY.**
- 7) BREEAM PRE-ASSESSMENT BY RPS.**
- 8) PROJECT SECURITY.**
- 9) TRANSPORT STATEMENT.**
- 10) DAYLIGHT-SUNLIGHT STATEMENT.**

**ARCHTECTURAL ASSESSMENT OF
SOMERS TOWN
CAMDEN**

IN

**JUSTIFICATION OF DESIGN OPTIONS
PROPOSED DEVELOPMENT
42 PHOENIX ROAD
LONDON**

FOR

THE FINDLAY ESTATE COMPANY

1 - Royal George - traditional eaves overhang with false Mansard roof.

2.5 - St. Anne's Flats – eaves overhang Mansard roof.

6 - St. Joseph's Flats – eaves overhang Mansard style roof.

7, 8, 9, 10 & 11 – Estate – traditional eave overhang with traditional pitched and hipped roofs.

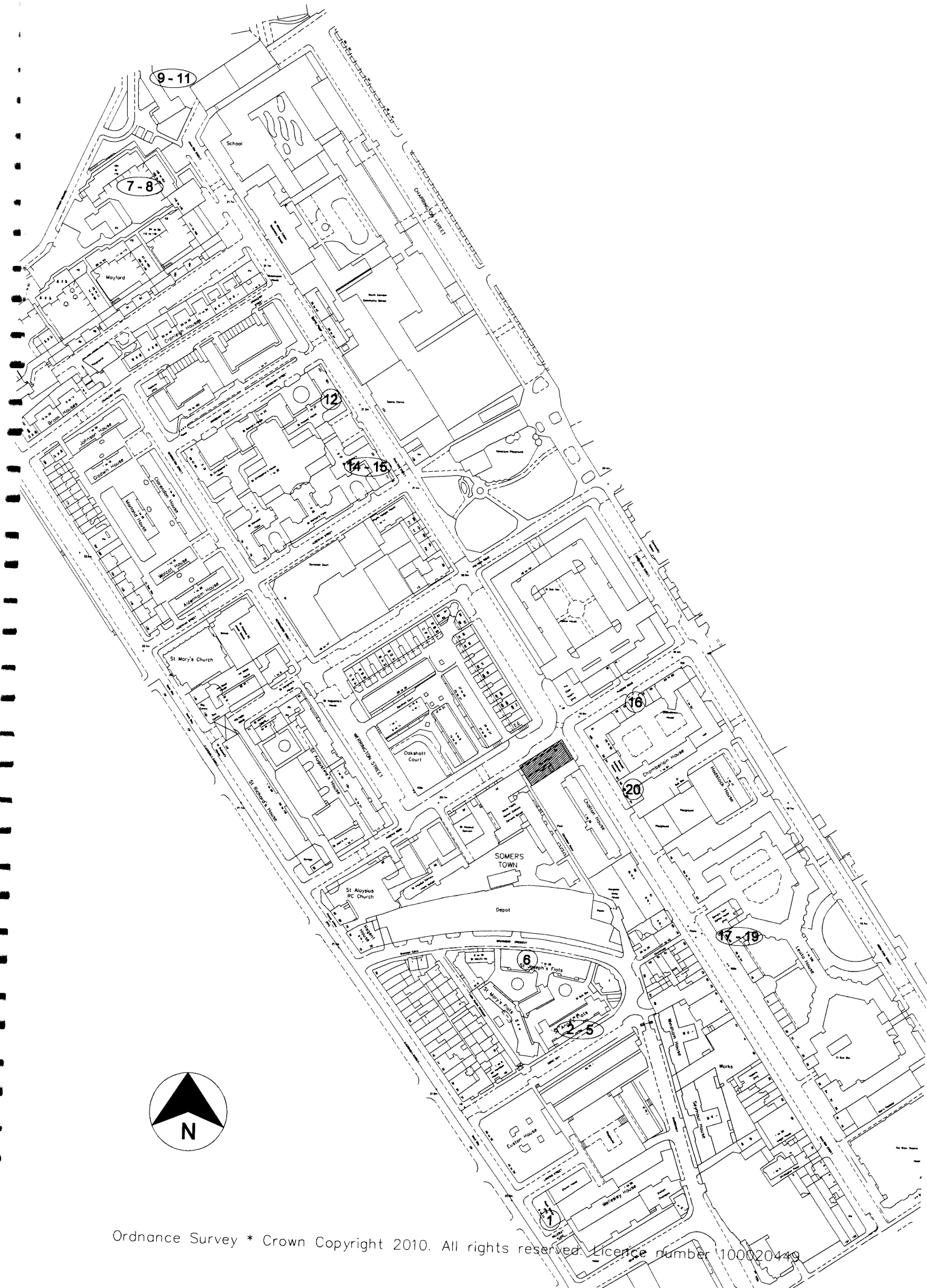
12-14 & 15 – St. Francis House & St. Anthony's Flats – traditional eaves overhang with Mansard roof.

16 – 52/54 Phoenix Road – eaves overhang with Mansard roof.

17, 18, 19 & 20 – Somers Town Coffee House – curved eaves overhang with Mansard style roofs.

20 – Chamberlain House – curved eaves overhang with Mansard style roofs.

21 – St. Augustine's House – traditional eaves overhang with Mansard roof.





1.



2.



3.



4.



5.



6.



7.



8.



9.



10.



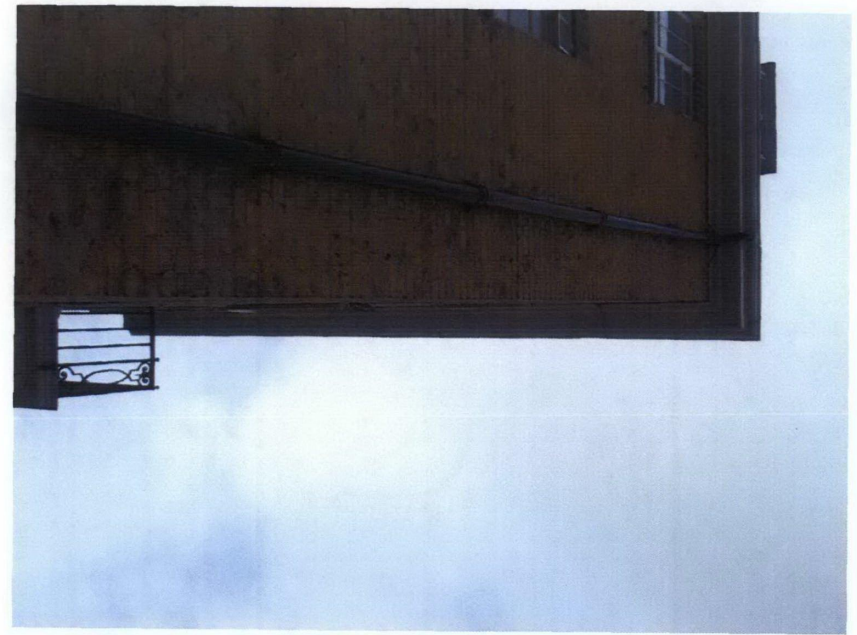
11.



12.



14.



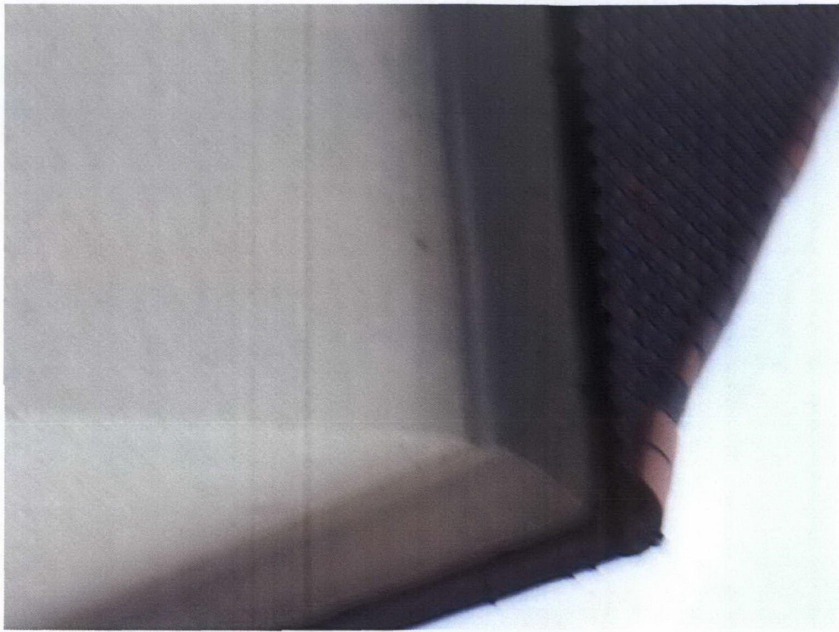
15.



16.



17.



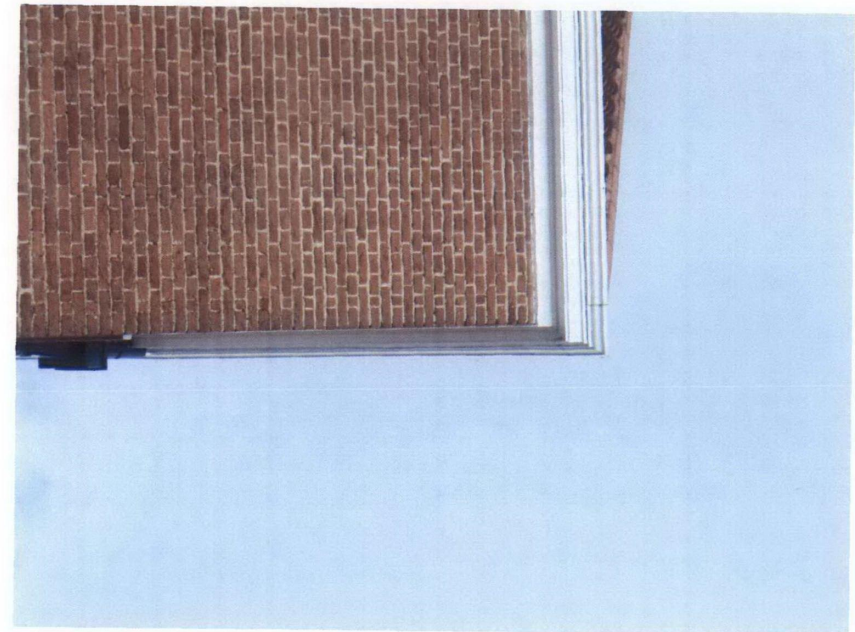
18.



19.



20.



21.