

Cornerstone : Supporting Technical Information for Vodafone : -

ABC Self Storage, 145-147 York Way,
London, N7 9LH

Vodafone Site - 80451

The proposed site is required to provide Vodafone 3G coverage and capacity to the dense urban area West of Caledonian Road, including York Way and Camden Road.

Date Prepared: 7th June 2010





KEY TO **VODAFONE** COVERAGE PLOTS

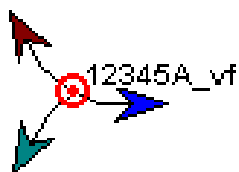
The enclosed radio propagation plots are based on Ordnance Survey geographical information.

The level of coverage provided by a particular site is dependant on a number of variables. The main factors which determine the extent of coverage are: the frequency of the signal emitted, the height of the antenna above ground level, the characteristics of the surrounding topography and the type and occurrence of ground clutter such as buildings and trees which can cause 'shadows' or reflections and can absorb the signal.

The Vodafone Radio Planners have produced accurate visual representations of the level of coverage available in this particular area by using advanced computer modelling software based on a Geographical Information System. The programme takes the numerous variables as above into account and can then calculate and plot the strength of the signal.

Existing and proposed sites are indicated by a red circle and dot with the site number. The orientation of the antennas is shown by the arrows.

Site arrows show orientation of antennas



Note on large rooftop sites the antenna can be distributed in different locations from the site location. This is represented by a line extending outwards from the site to the antenna

Key for GSM (2G) Plots

Orange	Sufficient signal strength to provide adequate service for indoor use of a hand portable mobile in urban areas.	Indoor Urban
Blue	Sufficient signal strength to provide adequate service for indoor use of a hand portable mobile in suburban areas	Indoor Suburban
Green	Sufficient signal strength to provide adequate service for use of a hand portable mobile in a car	In Car
Yellow	Sufficient signal strength to provide adequate service for outdoor use of a hand portable mobile.	Outdoor
No Colour	Insufficient signal strength to provide reliable service.	No Coverage

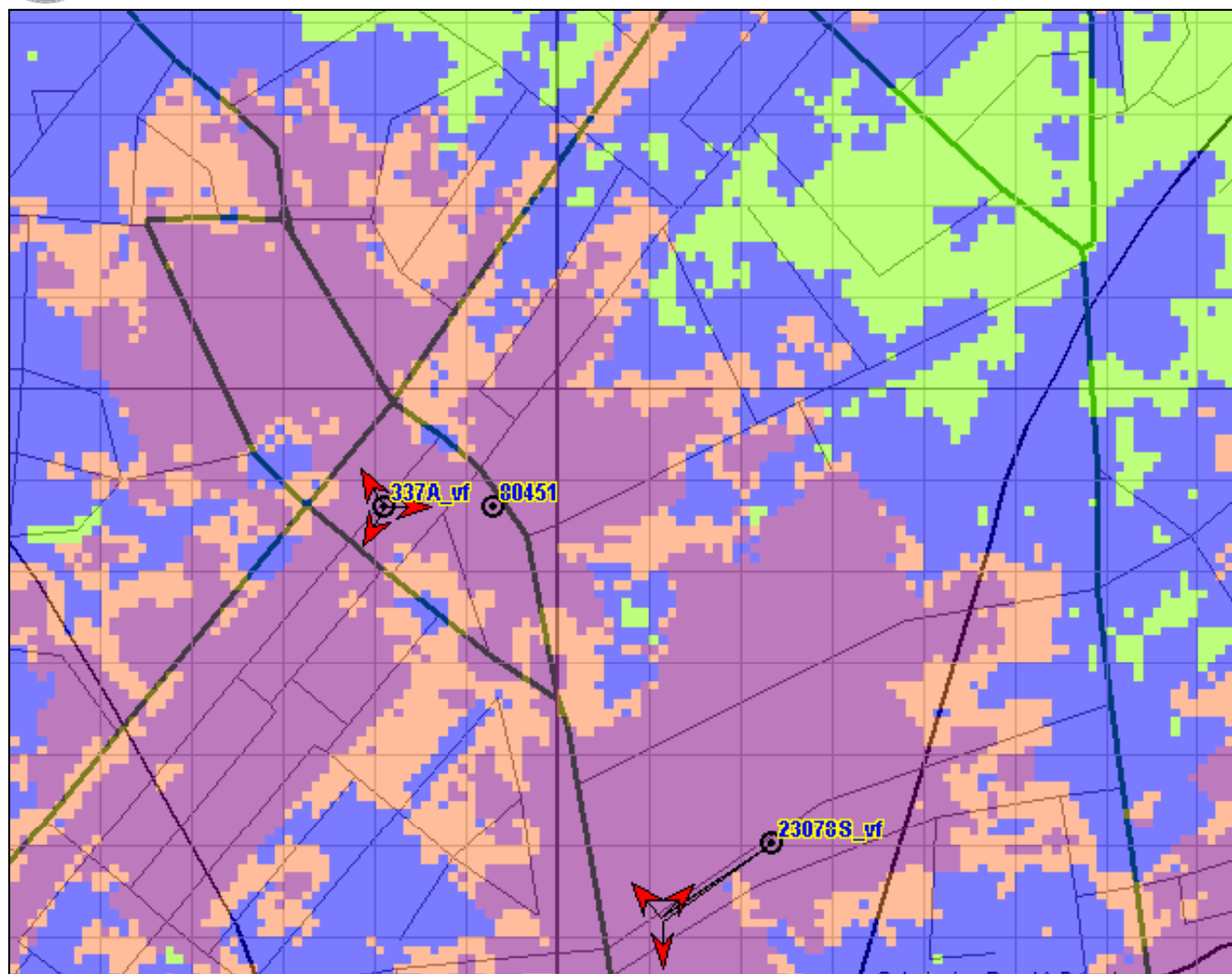
Key for UMTS (3G) Plots

Purple	Sufficient signal strength to provide adequate service for indoor use of a hand portable mobile in dense urban areas.	Dense Urban
Orange	Sufficient signal strength to provide adequate service for indoor use of a hand portable mobile in urban areas.	Indoor Urban
Blue	Sufficient signal strength to provide adequate service for indoor use of a hand portable mobile in suburban areas	Indoor Suburban
Green	Sufficient signal strength to provide adequate service for use of a hand portable mobile in a car	In Car
Yellow	Sufficient signal strength to provide adequate service for outdoor use of a hand portable mobile.	Outdoor
No Colour	Insufficient signal strength to provide reliable service.	No Coverage





Vodafone - Existing UMTS (3G) Coverage (Plot A)



3G Coverage by Signal

■	Dense Urban
■	Urban
■	Suburban
■	In Car
■	Outdoor

Digital Mapping Solutions from Dotted Eyes. © Crown Copyright 2006.
All rights reserved. Licence number 100019318

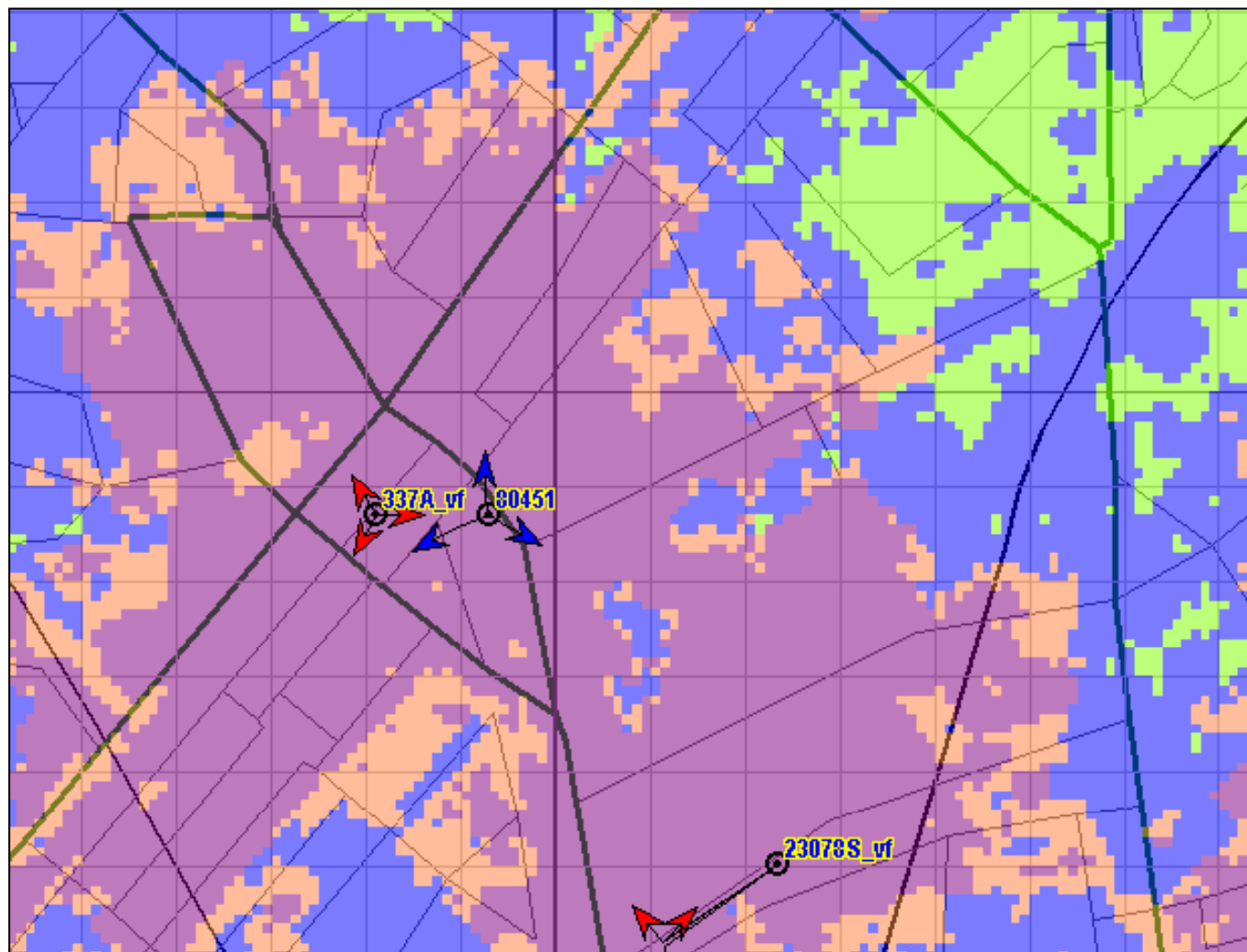
This coverage plan must be read in conjunction with the key and site specific supplementary information. Each colour block represents 10 metres square.

ABC Self Storage, 145-147 York Way





Vodafone - Proposed UMTS (3G) Coverage (Plot B)



3G Coverage by Signal

■	Dense Urban
■	Urban
■	Suburban
■	In Car
■	Outdoor

Digital Mapping Solutions from Dotted Eyes. © Crown Copyright 2006.
All rights reserved. Licence number 100019318

This coverage plan must be read in conjunction with the key and site specific supplementary information. Each colour block represents 10 metres square.

ABC Self Storage, 145-147 York Way

