

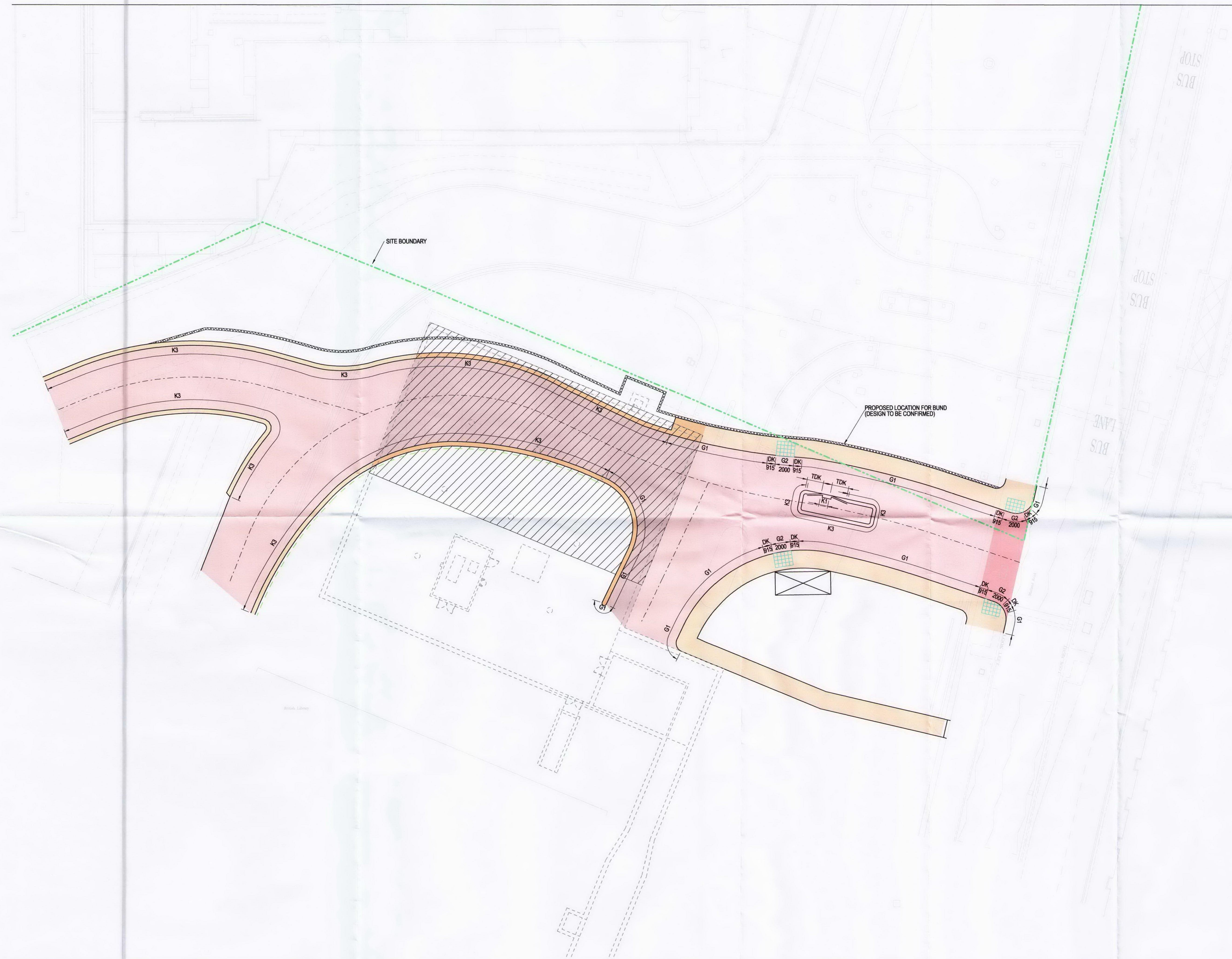
British Library Access Planning Application

8. Proposed Access Road

1. THIS DRAWING IS TO BE READ IN CONJUNCTION WITH ALL RELEVANT ARCHITECTS, LANDSCAPE ARCHITECTS AND ENGINEERS' DRAWINGS AND SPECIFICATIONS.
2. ALL WORKING DIMENSIONS TO BE CHECKED ON SITE.
3. DO NOT SCALE.
4. ANY DISCREPANCIES BETWEEN DRAWINGS OF DIFFERENT SCALES AND BETWEEN DRAWINGS AND SPECIFICATION WHERE APPROPRIATE TO BE NOTIFIED TO THE ENGINEER FOR DECISION.
5. COPYRIGHT RESERVED. THIS DRAWING MAY ONLY BE USED FOR THE CLIENT AND LOCATION SPECIFIED IN THE TITLE BLOCK. IT MAY NOT BE COPIED OR DISCLOSED TO ANY THIRD PARTY WITHOUT THE PRIOR WRITTEN CONSENT OF AKT.

LEGEND

- 1 - BITUMINOUS DEVELOPMENT ACCESS ROAD CONSTRUCTION AT JUNCTION WITH MAIN ROAD
- 2 - BITUMINOUS DEVELOPMENT ACCESS ROAD CONSTRUCTION
- 3 - BITUMINOUS DEVELOPMENT ACCESS ROAD CONSTRUCTION WITH VOID FORMER OVER TANK FARM STRUCTURE
- 4 - PAVING SLAB FOOTWAY CONSTRUCTION
- 5 - PAVING SLAB FOOTWAY CONSTRUCTION OVER TANK FARM
- EXTENT OF VOID FORMER (5)
- BRITISH LIBRARY TANK FARM
- 2000
- 450mm x 450mm TACTILE PAVERS



Rev.	Description	Date	By	Project No: 08.33082.09	British Library Access
P1	ISSUED FOR PLANNING	23.06.10	MD	Drawn by: DS	Sheet Title:
P2	ISSUED FOR COMMENTS	25.06.10	MD	Drawn Date: APRIL 2010	ROAD ARRANGEMENT
P3	PLANNING ISSUE	01.07.10	MD	Reviewed by: MD	BUILD-UP KEY PLAN
P4	PLANNING ISSUE	15.07.10	MD	Scale: 1:200	
P5	PLANNING ISSUE	28.07.10	MD	Original drawing is A1 at scale above	
				Do not scale dimensions from drawings Site verify all dimensions prior to construction Report all discrepancies immediately This drawing is to be used in conjunction with all relevant documents and drawings	Sheet Number: C-512
					Revision: P5