



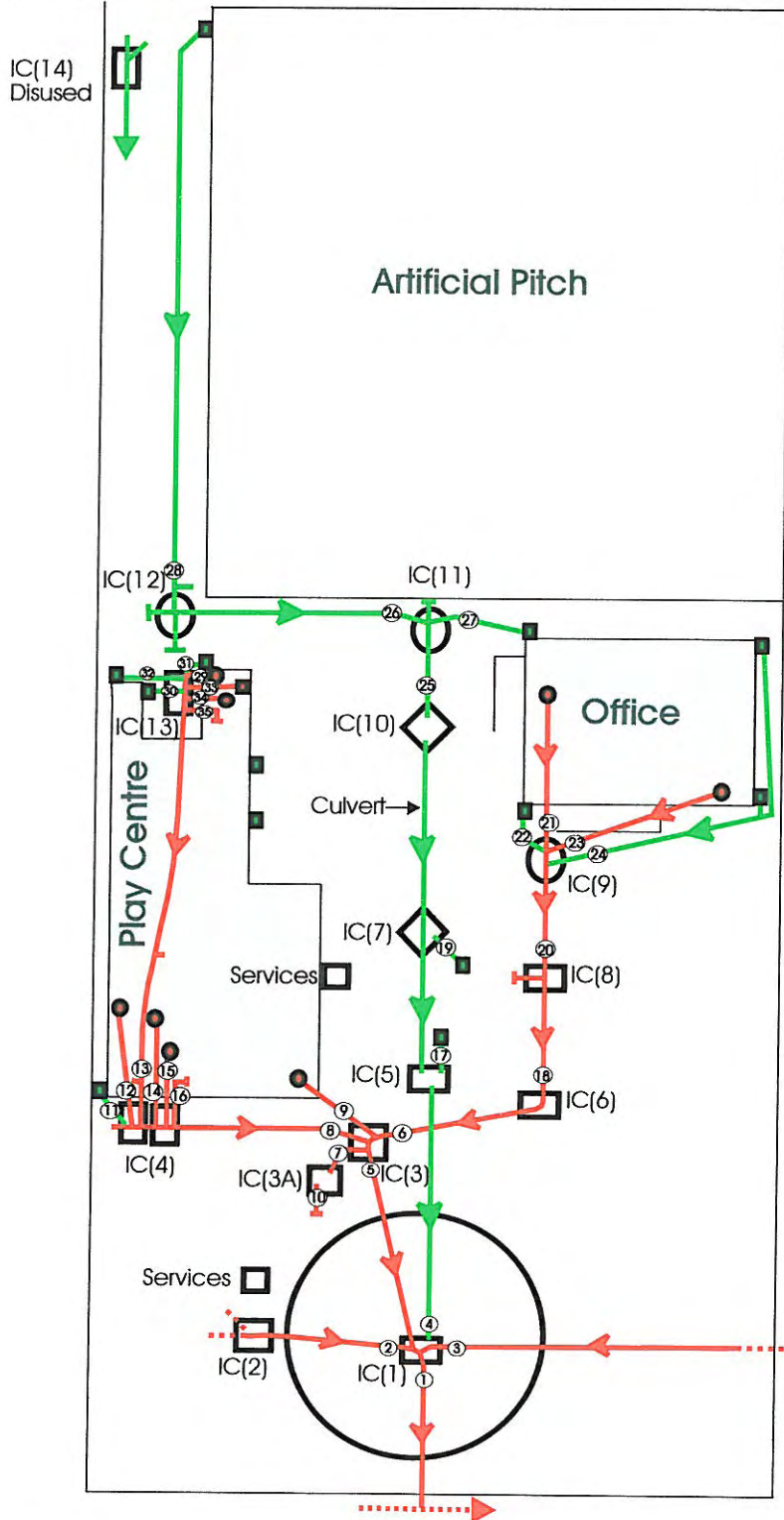
KENCLEAN CCTV Drain Surveys

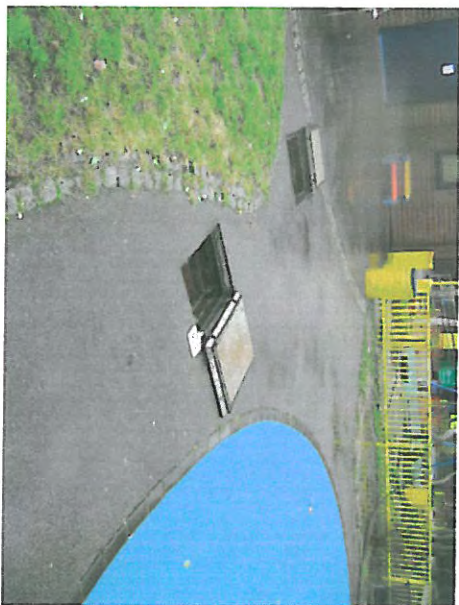
3 Philip Avenue, Romford, Essex. RM7 OXB

Tel/Fax: 01708 720232 Mobile: 07831 489276

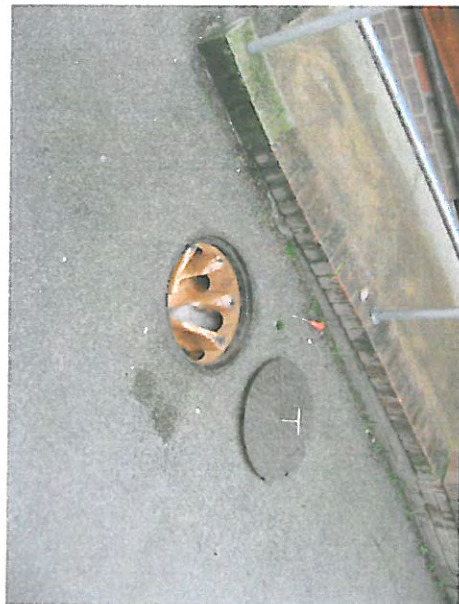
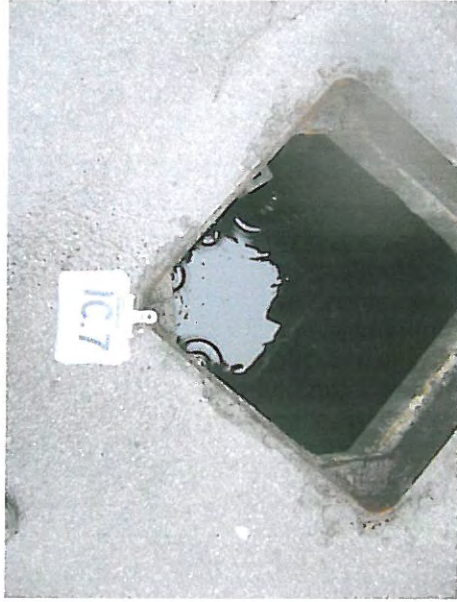
Client: Built Engineers Ltd	Date: 19-03-10
Site Address Fortune Green Childrens Centre	Job No: S414FORT
Detail: Drainage Layout	Scale: N.T.S.
Surface Drainage — Foul Drainage — CCTV Run No ①	

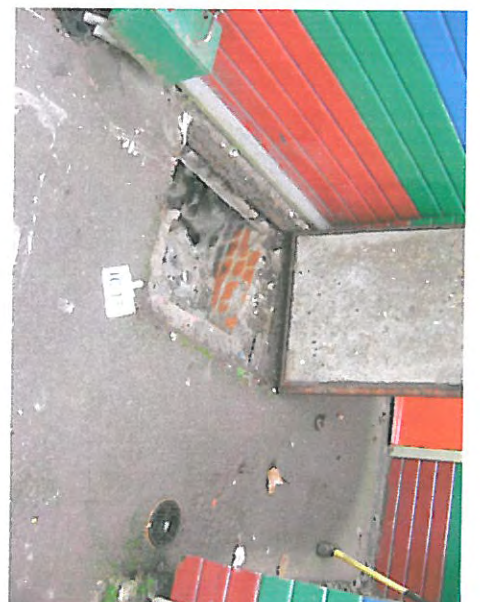
THIS INFORMATION CONCERNING SEWERS OR DRAINS IS CORRECT AS FAR AS IS KNOWN
HOWEVER KENCLEAN ACCEPTS NO RESPONSIBILITY FOR ANY INACCURACIES

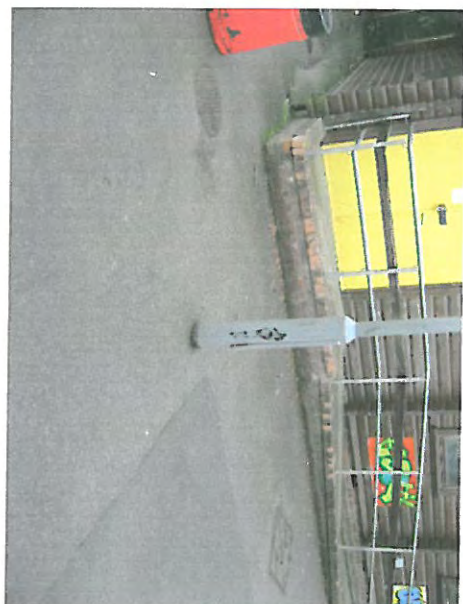














Fortune Green Play Centre – Inspection Chambers

Inspection Chamber Number 1

<u>Composition</u>	<u>Invert Level</u>	<u>Cover Material</u>	<u>Cover Dimensions</u>
Brick	3450	Aluminium/Concrete/Tarmac	760 x 610

Inspection Chamber Number 2

<u>Composition</u>	<u>Invert Level</u>	<u>Cover Material</u>	<u>Cover Dimensions</u>
Brick	3350	Aluminium/Concrete/Tarmac	700 x 550

Inspection Chamber Number 3

<u>Composition</u>	<u>Invert Level</u>	<u>Cover Material</u>	<u>Cover Dimensions</u>
Brick	1590	Aluminium/Concrete/Tarmac	980 x 680

Inspection Chamber Number 3A

<u>Composition</u>	<u>Invert Level</u>	<u>Cover Material</u>	<u>Cover Dimensions</u>
Brick	n/a	Aluminium/Concrete/Tarmac	700 x 700

Inspection Chamber Number 4

<u>Composition</u>	<u>Invert Level</u>	<u>Cover Material</u>	<u>Cover Dimensions</u>
Brick	1270	Aluminium/Concrete/Tarmac	1050 x 750 (x2)

Inspection Chamber Number 5

<u>Composition</u>	<u>Invert Level</u>	<u>Cover Material</u>	<u>Cover Dimensions</u>
Concrete	1680*	Aluminium/Concrete/Tarmac	620 x 620

* High water level and sludge in chamber – approximate invert level

Inspection Chamber Number 6

<u>Composition</u>	<u>Invert Level</u>	<u>Cover Material</u>	<u>Cover Dimensions</u>
Brick	1330	Aluminium/Concrete/Tarmac	980 x 680

Inspection Chamber Number 7

<u>Composition</u>	<u>Invert Level</u>	<u>Cover Material</u>	<u>Cover Dimensions</u>
Concrete	1550*	Steel/Concrete/Tarmac	620 x 620

* High water level and sludge in chamber – approximate invert level

Inspection Chamber Number 8

<u>Composition</u>	<u>Invert Level</u>	<u>Cover Material</u>	<u>Cover Dimensions</u>
Brick	1200	Aluminium/Concrete/Tarmac	1110 x 700

Inspection Chamber Number 9

<u>Composition</u>	<u>Invert Level</u>	<u>Cover Material</u>	<u>Cover Dimensions</u>
Plastic	330	Cast Iron	500 Diameter

Inspection Chamber Number 10

<u>Composition</u>	<u>Invert Level</u>	<u>Cover Material</u>	<u>Cover Dimensions</u>
Concrete	1430	Steel/Concrete/Tarmac	600 x 600

Inspection Chamber Number 11

<u>Composition</u>	<u>Invert Level</u>	<u>Cover Material</u>	<u>Cover Dimensions</u>
Plastic	630	Cast Iron	500 Diameter

Inspection Chamber Number 12

<u>Composition</u>	<u>Invert Level</u>	<u>Cover Material</u>	<u>Cover Dimensions</u>
Brick	450	Cast Iron	500 Diameter

Inspection Chamber Number 13

<u>Composition</u>	<u>Invert Level</u>	<u>Cover Material</u>	<u>Cover Dimensions</u>
Brick	650	Steel/Concrete	960 x 830

Inspection Chamber Number 14

<u>Composition</u>	<u>Invert Level</u>	<u>Cover Material</u>	<u>Cover Dimensions</u>
Brick	900	Steel/Concrete	740 x 740