

8.0 Elevational Detail Body

8. 12

The form and articulation of the building envelope responds to environmental considerations.

8. 13

The vertical orientation of deep set, tall narrow windows on the east and west elevations shade the glazing against the low sun angles on these façades.

8. 14

By contrast, the southern elevation has a horizontal orientation of projecting transoms that assists in solar shading to glazing on this elevation.

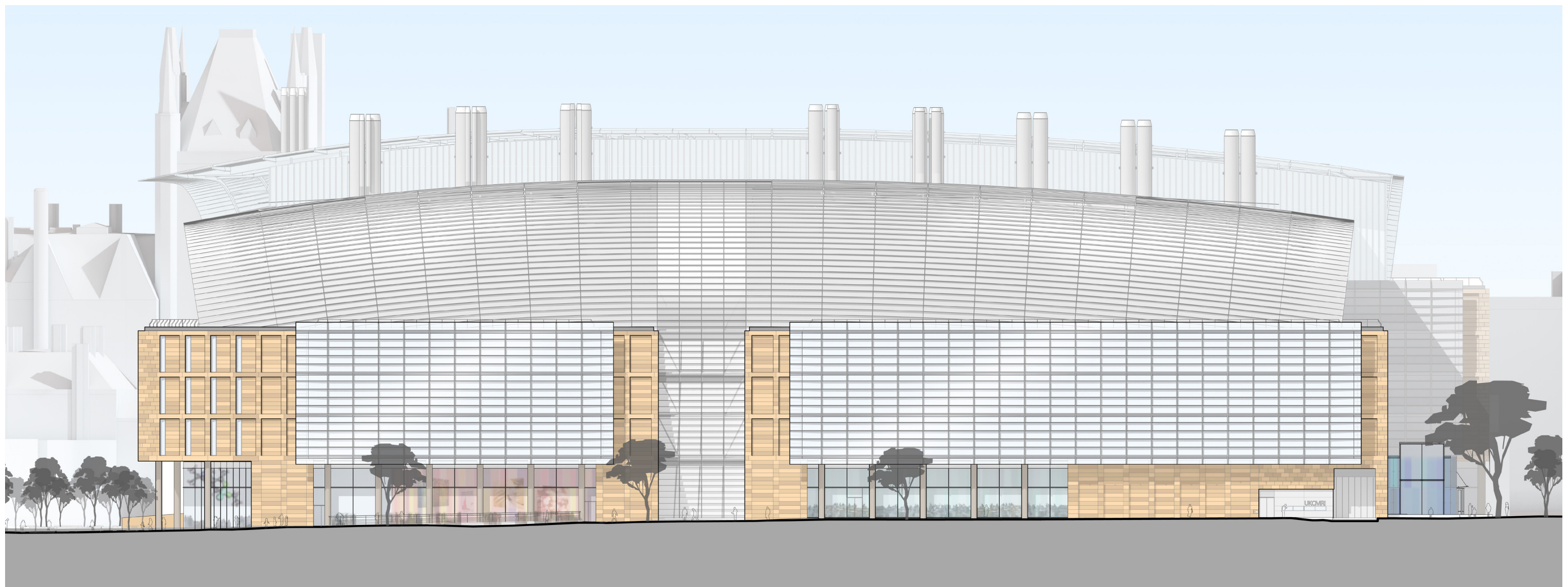


Fig 8-12. North elevation