

CHAPTER 8.0

## ELEVATIONAL DETAIL



8.0 Elevational Detail  
Tripartite Response

8. 1  
The building's design responds to the rich architectural heritage of the local area. The proposed Institute relates both to the large civic neighbours to its south and east – St Pancras International's Barlow Shed, St Pancras Chambers, formerly the Midland Grand Hotel and the British Library. The building relates to the smaller scale residential buildings of Somers Town to the north and west.
8. 2  
The building is articulated into a tripartite massing of base, body and roof.
8. 3  
The base of the building has been developed to mediate the mass of the building with an active and visible human scale.
8. 4  
The 'body' of the building is bisected by two intersecting atria which divide the building into four science 'neighbourhoods'.
8. 5  
The top of the building materialises as a vaulted roof structure which celebrates and locates the Institute from long distance views but begins to drop out of view as the building is approached from street level.



Fig 8-1. Diagrammatic model of proposed building in context

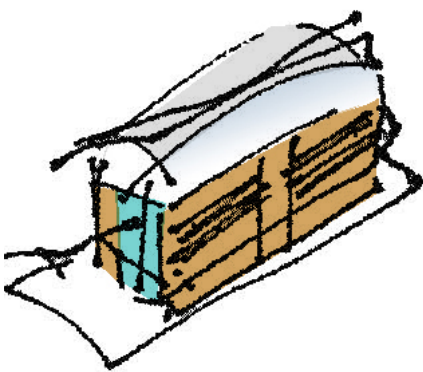


Fig 8-2. Tripartite expression

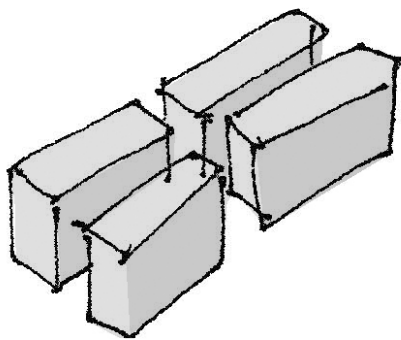


Fig 8-3. Body

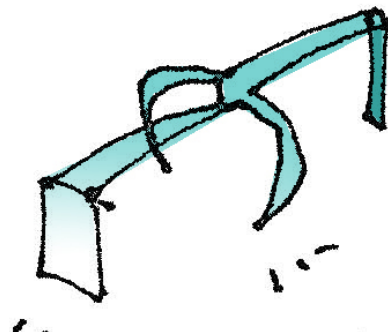


Fig 8-4. Atria

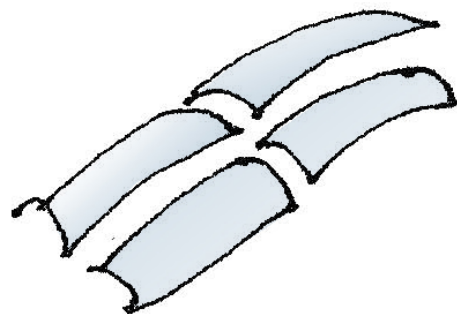


Fig 8-5. Roof