

7.0 Internal Organisation

Basements

7. 4

The building comprises two basements housing highly serviced, specialist research spaces. Each basement level has an interstitial plant mezzanine servicing the floor.

7. 5

Around 30% of the building area is located below ground, minimising the overall height of the building. This is a direct response to consultations with the community, the LBC and GLA.

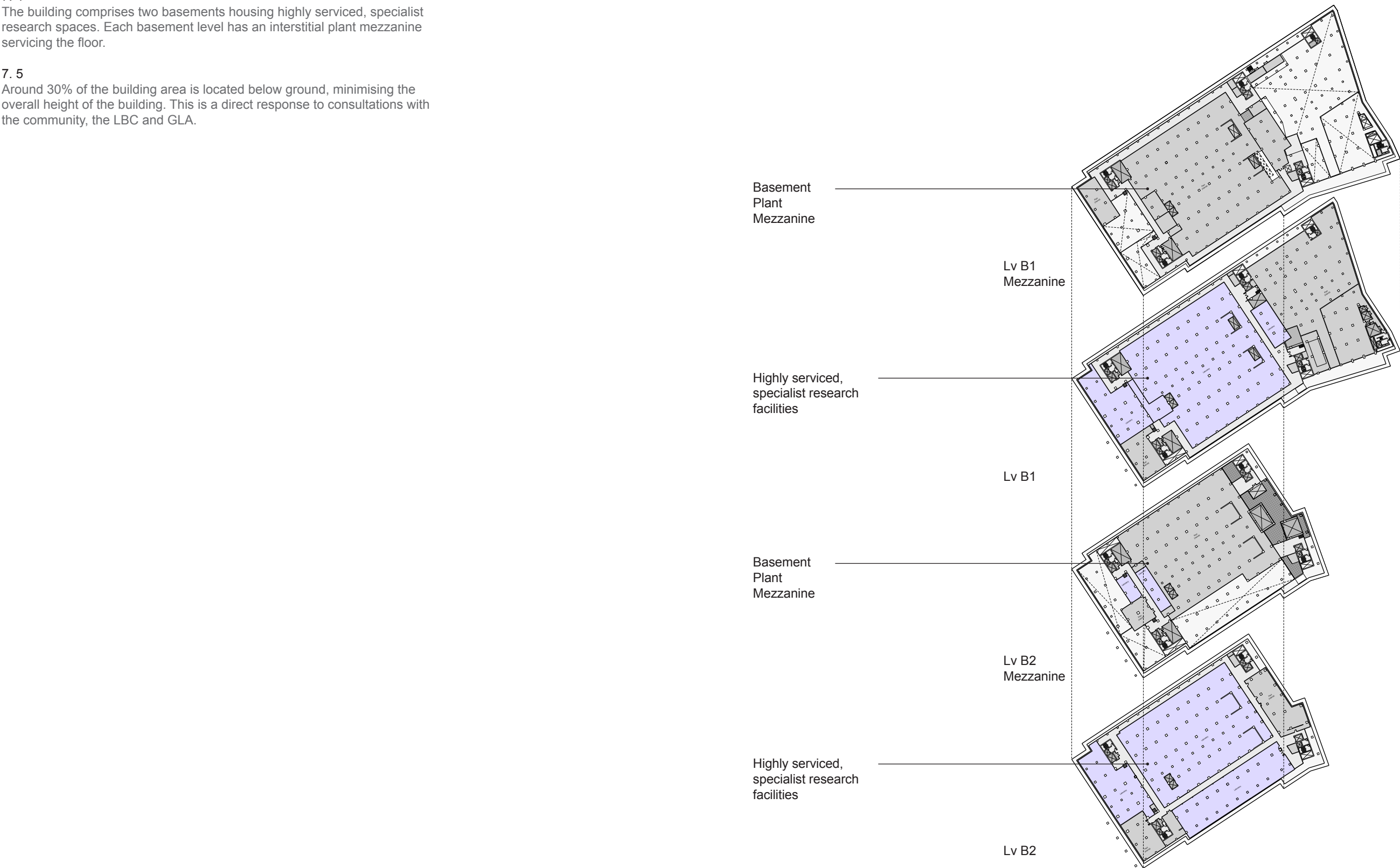


Fig 7-2. Below ground level