

CHAPTER 1.0

INTRODUCTION

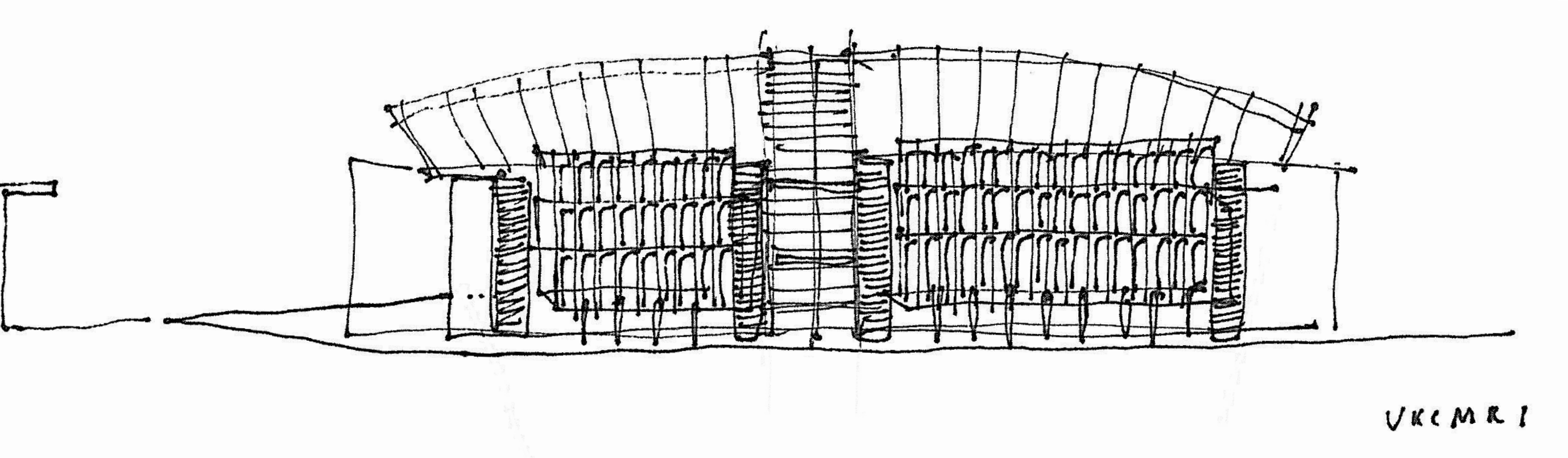


Fig 1-1. North elevation concept sketch

- 1. 1
This document is structured into the following chapters:
- 1. 2
Chapter 2.0 - *The Design Principles* describe the response of the design to the project brief.
- 1. 3
Chapter 3.0 - *The Context* describes the existing site, its setting and its relationship to relevant planning considerations including conservation areas, listed buildings, transportation infrastructure, public realm and townscape.
- 1. 4
Chapter 4.0 - *Design Evolution* explains how the design has evolved over time.

- 1. 5
Chapter 5.0 - *The Proposed Development* sets out the design strategy for the proposal and assesses the architectural quality of the proposals. The section describes the building's integration of architecture, structure and environmental services and how these considerations inform the massing and façade design.
- 1. 6
Chapter 6.0 - *Public Realm* assesses the public realm contribution made by the proposal, with an assessment of character of the new public spaces and their relationship with the surrounding context. The benefits offered by new permeability are evaluated against the observed pattern of existing pedestrian movement.
- 1. 7.
Chapter 7.0 - *Internal Organisation* describes the functional and organisational underpinnings of the design. UKCMRI will provide a state of the art research facility supporting the ambitious science vision of the Institute. The chapter explains how these goals are addressed in the building and how its design supports the collaborative ways of working that will make it distinct as a research centre.

- 1. 8
Chapter 8.0 - *Elevational Detail* describes the proposals for the building envelope. The façades play a key role in underpinning the building's environmental strategy. Their scale, detail, and materiality have been informed by the relationship to context.
- 1. 9
Chapter 9.0 - *Sustainability* describes the sustainability performance targets against which the scheme has been designed and the measures adopted to meet these criteria.
- 1. 10
Chapter 10.0 - *Accessibility* describes the access routes into and out of the building, particularly for users with special needs.
- 1. 11
Chapter 11.0 - *Conclusions* summarises the benefits of locating this new Institute in the heart of Camden.

