

**Tree Catalogue and Protection Plan**  
**25 Bracknell Gardens, Hampstead, London, NW3 7EE**

Trees at No. 25 have been catalogued using Annex D of the British Standard 5837 (2005) "Trees in Relation to Construction" (BS) as a guideline.

**Key to tree catalogue**

- Tree No. and Species      the number corresponds with the location shown on the topographical survey extract,  
the species is the common name of the tree
- Ht                              this is a guide to the height of each tree as recorded on the topographical survey
- Stem dia.                  is the stem diameter measured in mms with a girthing tape at 1.5metres from ground level.
- c.                              circa - a close estimate of diameter is made when it was not possible to get the girthing tape around the stem or an accurate reading was impossible due to say heavy ivy growth. Please note that these measurements may vary from those on the topographical survey as the land surveyors may have measured the stem at a different point.
- Branch Spread            to the nearest metre is estimated from the centre of the tree towards the four compass points.
- HCC                          Height Crown Clearance is the height of the lowest branch estimated in metres.
- Age (Class)                Y    = Young i.e. first third of useful life  
                                  MA = Middle aged i.e. second third of useful life  
                                  M    = Mature i.e. final third of useful life
- (Phys) Physiological Condition is an opinion as to how the tree is functioning when it is compared to similar trees in similar locations.  
G = good, the tree is functioning normally

F = fair, the tree is below par but is most likely to respond positively to management

P = poor, the tree cannot recover

#### Structural Condition

G = good - no significant defects requiring action at the present time.

F= fair - the tree has significant defects that will require remedial action.

P = poor - the structural integrity of the tree is compromised

E R C      Estimated Remaining Contribution is estimated in years

Catalogued trees are given a category grading, (cat grad in the following table), in simple terms

Category A are the best trees.

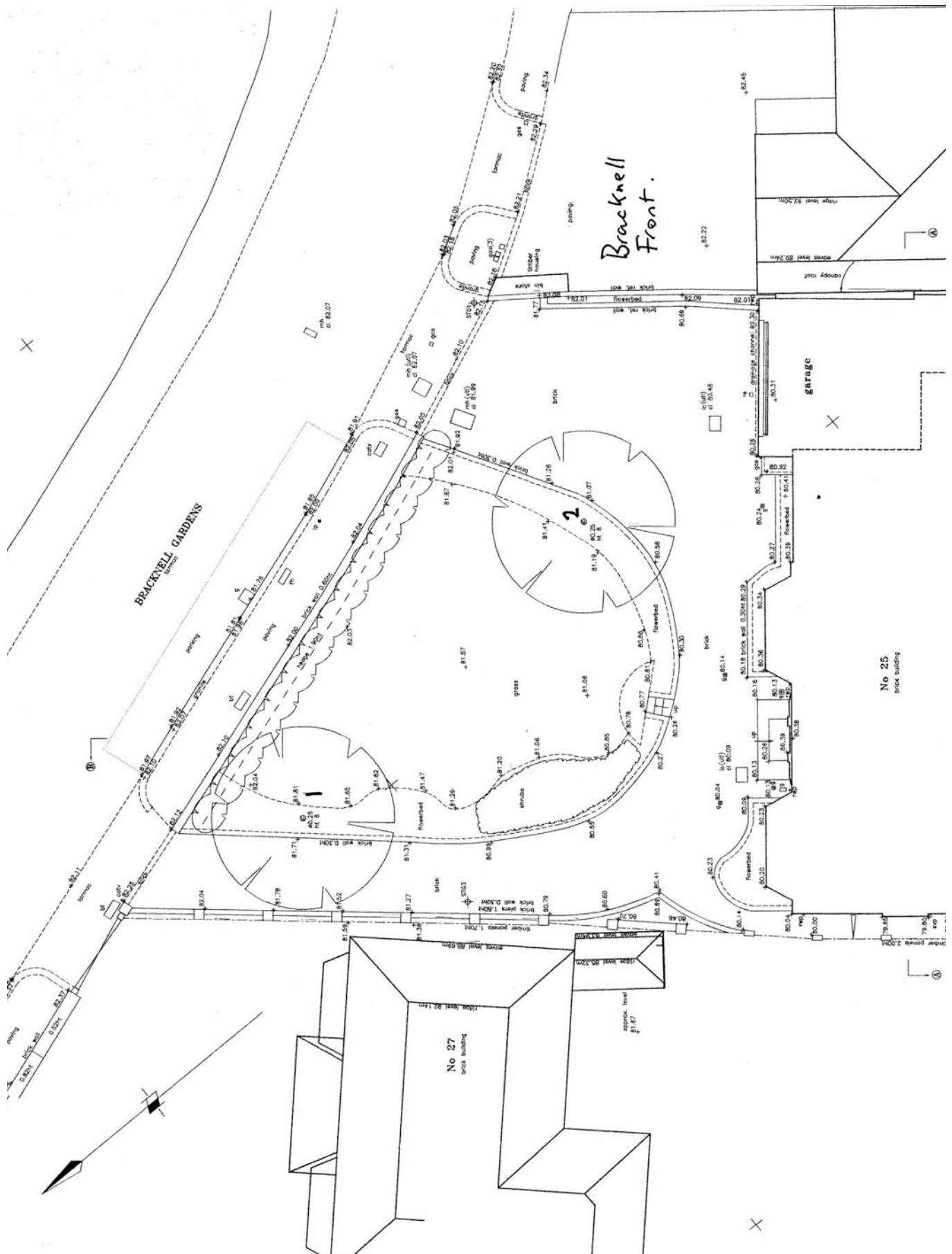
Category B are good quality trees.

Category C are mediocre trees which could be retained until suitable replacements are planted or trees which have potential but are small enough to be transplanted easily.

Category R trees are trees at the end of their useful life.

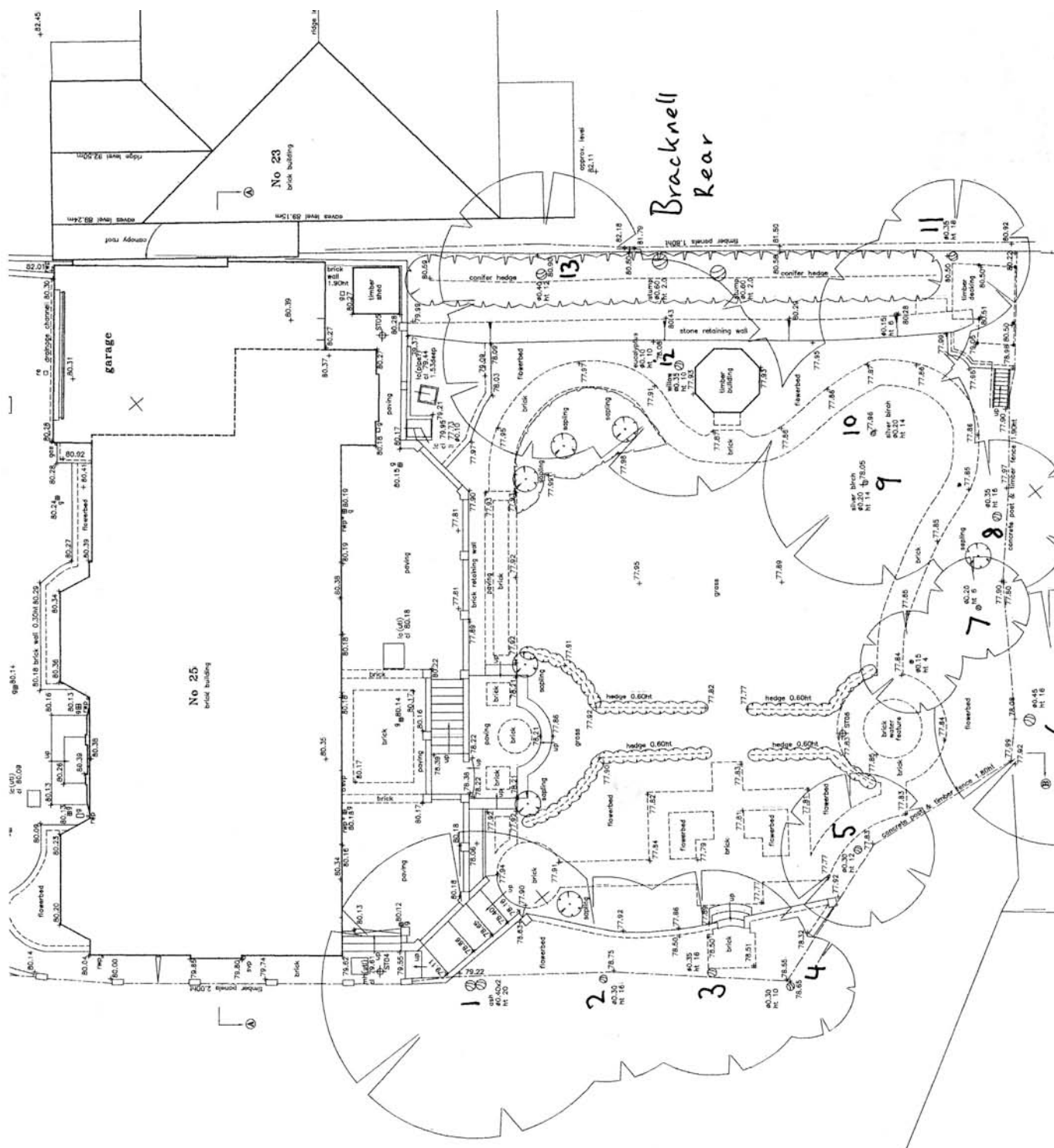
#### Front Garden

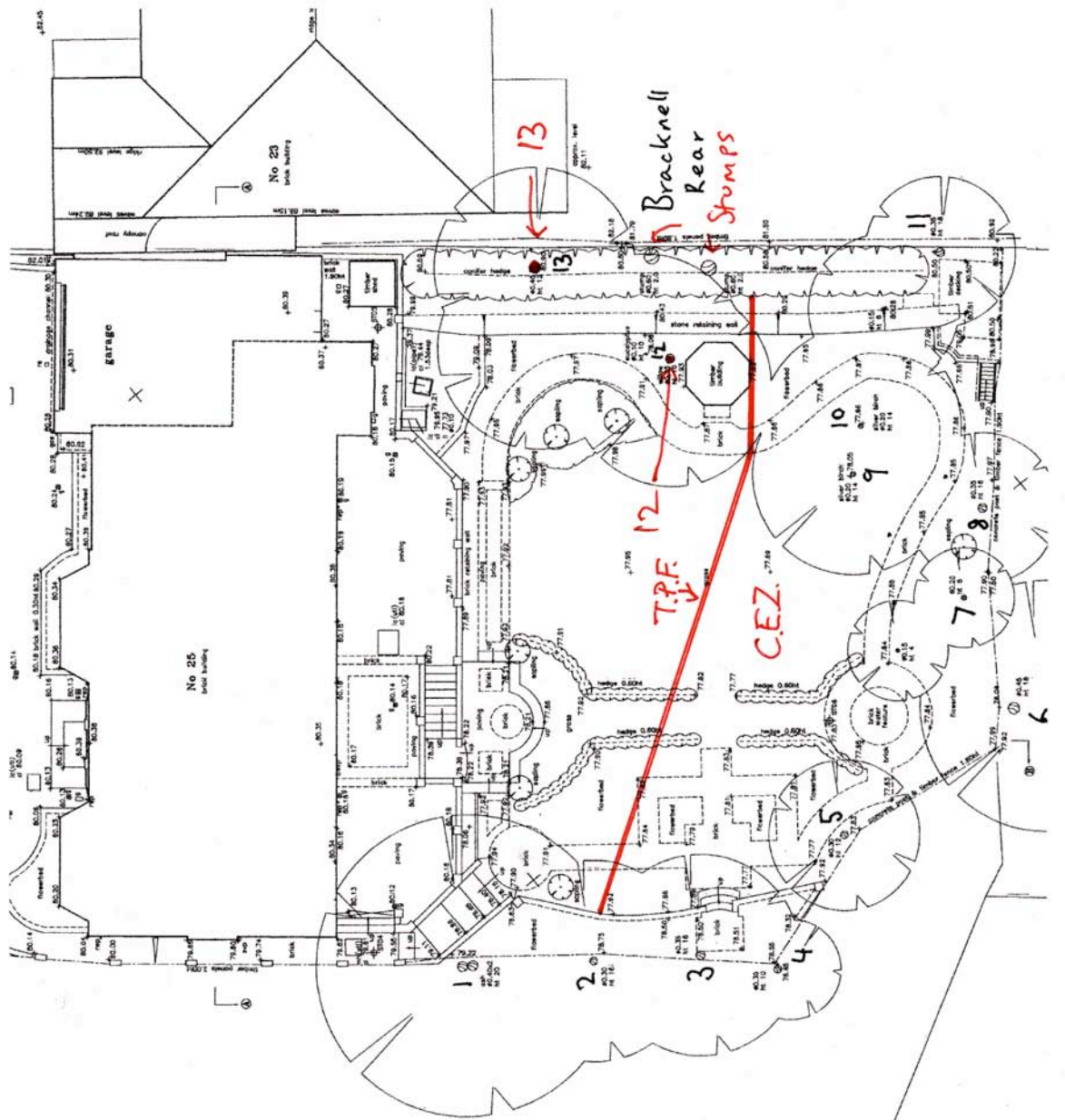
Tree No	Species	Ht	Stem Dia	Branch Spread	HCC	Age	Phys Con	Structural Condition	ERC	Cat Grad
1	Robinia	8	280	N 4 E 3 S 3 W 3	2	MA	G	G	40	B
2	Robinia	8	240	N 2 E 3 S 3 W 3	2	MA	G	G	40	B



## Rear garden.

Tree No.	Species	Ht	Stem Dia	Branch Spread	HCC	Age	Phys Con	Structural Condition	ERC	Cat Grad
1	Ash 2 stems Ownership unclear	20	C400 Each	N 5 E 3 S 5 W 4	9 -S 4 -N	M	G	Covered with ivy Not fully inspected	40	B/C
2	Prunus Ownership unclear	16	C400	N 2 E 1 S 1 W 1	3	M	G	Not fully inspected	20	C
3	Prunus	16	380	N 3 E 3 S 3 W 2	4	M	G	G	20	C
4	Prunus Off site	10	C250	N 1 E 1 S 1 W 1	---	MA	F	F Lean to west Covered with ivy	10	C
5	Lime	12	370	N 3 E 3 S 3 W 3	4	MA	G	F Topped at 4m Basal Cavity	20	C
6	Sycamore Off site	16	C550	N 5 E 2 S 5 W 7	4-E 0-W	M	G	G Ivy covered Not fully inspected	40	B
7	Sorbus	6	70	N 2 E 2 S 2 W 0	2	Y	G	G	20	C
8	Lime	16	360	N 2 E 2 S 2 W 2	3	MA	G	G Ivy covered	20	B
9	Birch	14	150	N 4 E 3 S 1 W 3	3	MA	G	G	20	C
10	Birch	14	160	N 3 E 4 S 1 W 1	3	MA	G	G	20	C
11	Lime	18	380	N 2 E 2 S 2 W 2	2	MA	G	G Ivy covered	40	B
12	Willow & Eucalyptus			N E S W				Young plantings with stem compromised by ties		R
13	Robinia	12	C500	N 3 E 3 S 3 W 3	4	M	F	F Excessive lean to north, towards the end of useful life	10	C





## Tree Protection Plan

The red line above shows the suggested route of a temporary fence erected prior to any building works. (The route obviously can be modified slightly to avoid damage to retained garden features).

This fence is known as the TPF (tree protection fence) and prevents access to and therefore minimises accidental damage to retained trees. The area enclosed is the self explanatory CEZ (construction exclusion zone). A specification for the TPF is found in paragraph 9.2.2 of the BS.

Three trees no. 13 & nos. 12 (in the catalogue) will be removed in order to build, none of these has the potential to provide any further amenity due to irreparable defects.