

4.0 Demolition Drawings

This section of the report comprises of the soft strip out drawings (4.1) followed by the demolition drawings (4.2).

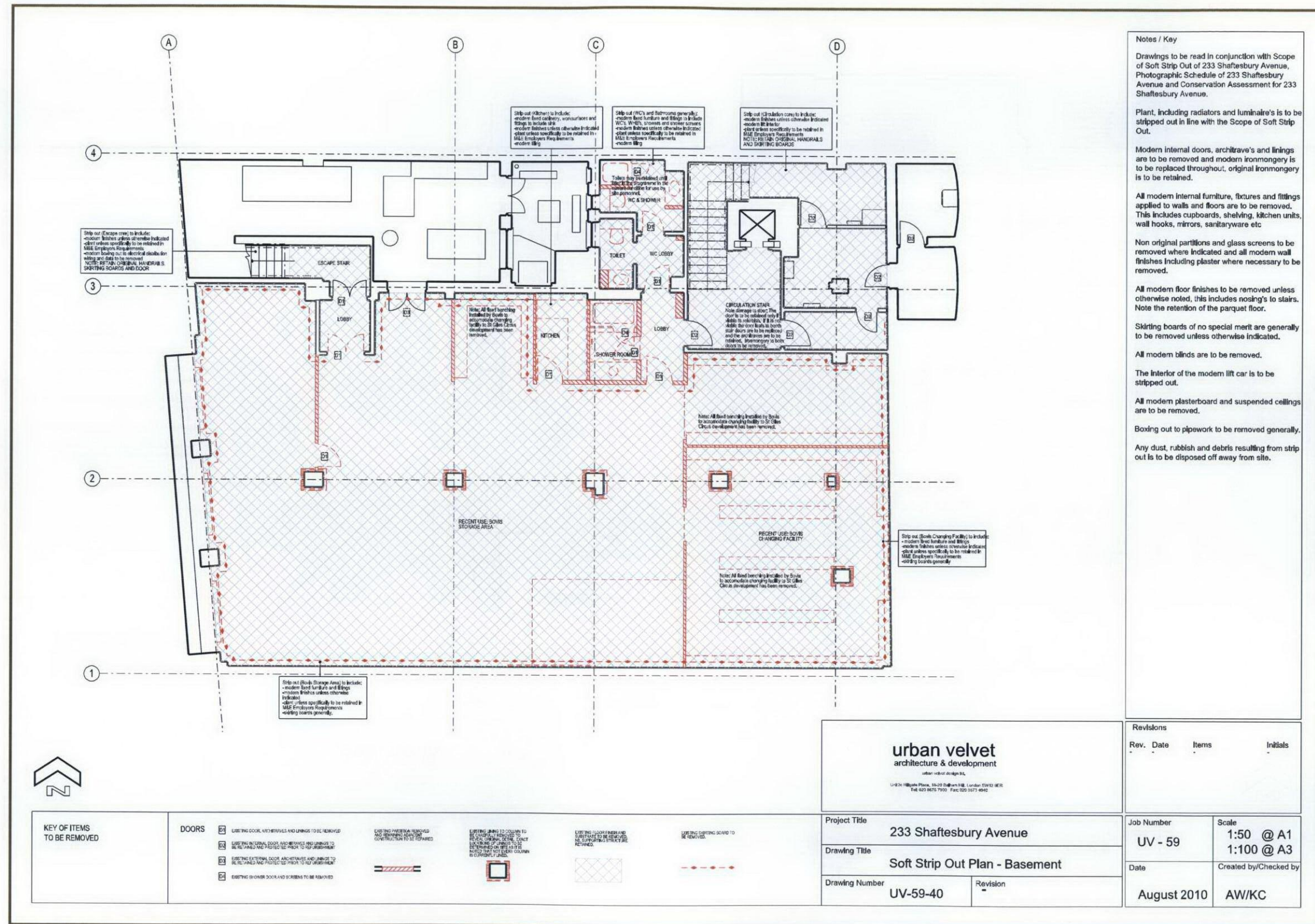
4.1 Soft Strip Out Plans

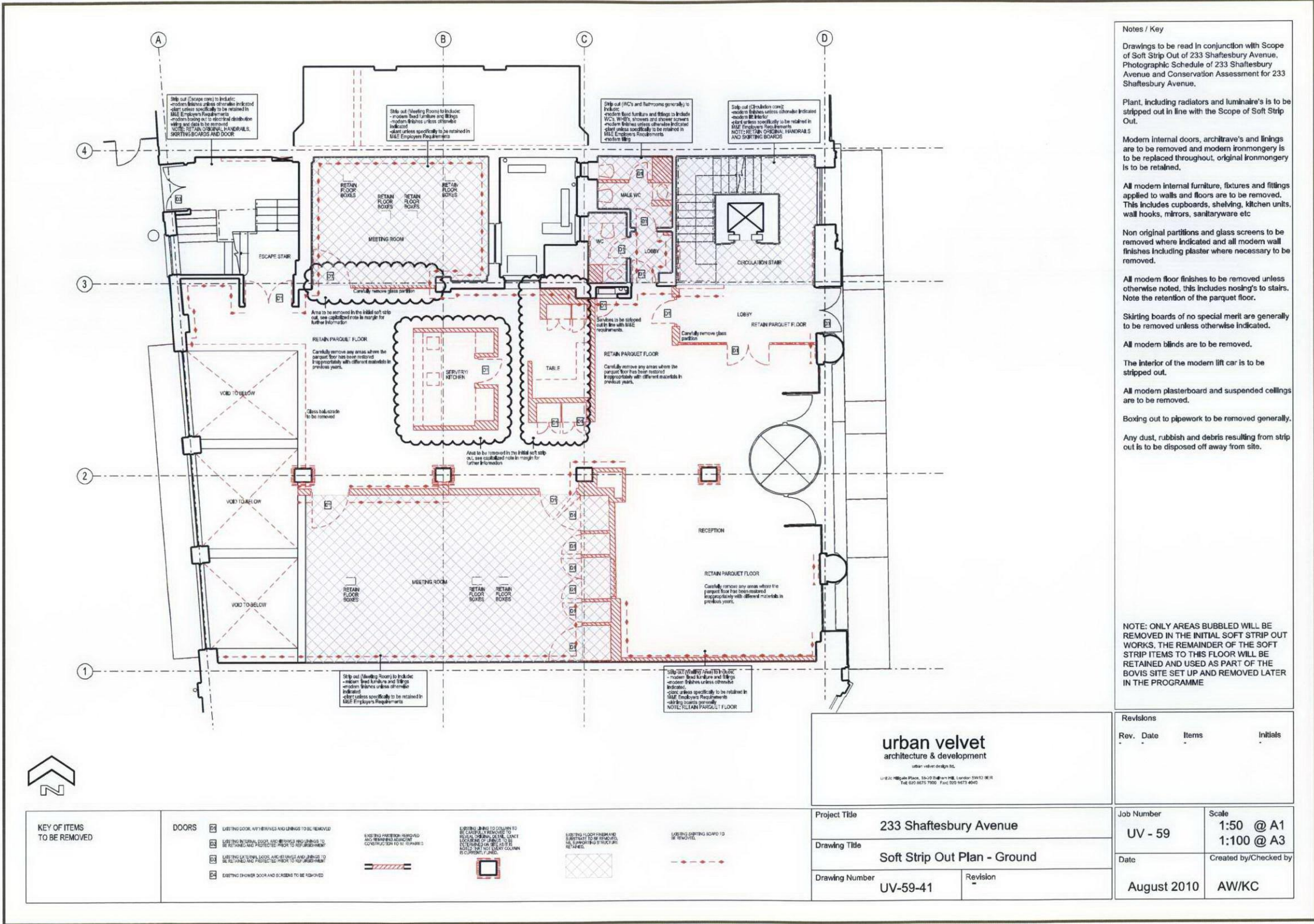
The following plans indicate the extent of the early strip out work. The scope for this was submitted to Camden on the 25th August by Gerald Eve for confirmation that listed building consent would not be required. The drawings have been included to illustrate to the case officer the difference between the existing drawings and what may be seen on site. The reliability of these drawings is dependant on the decision from the council regarding the proposed scope.

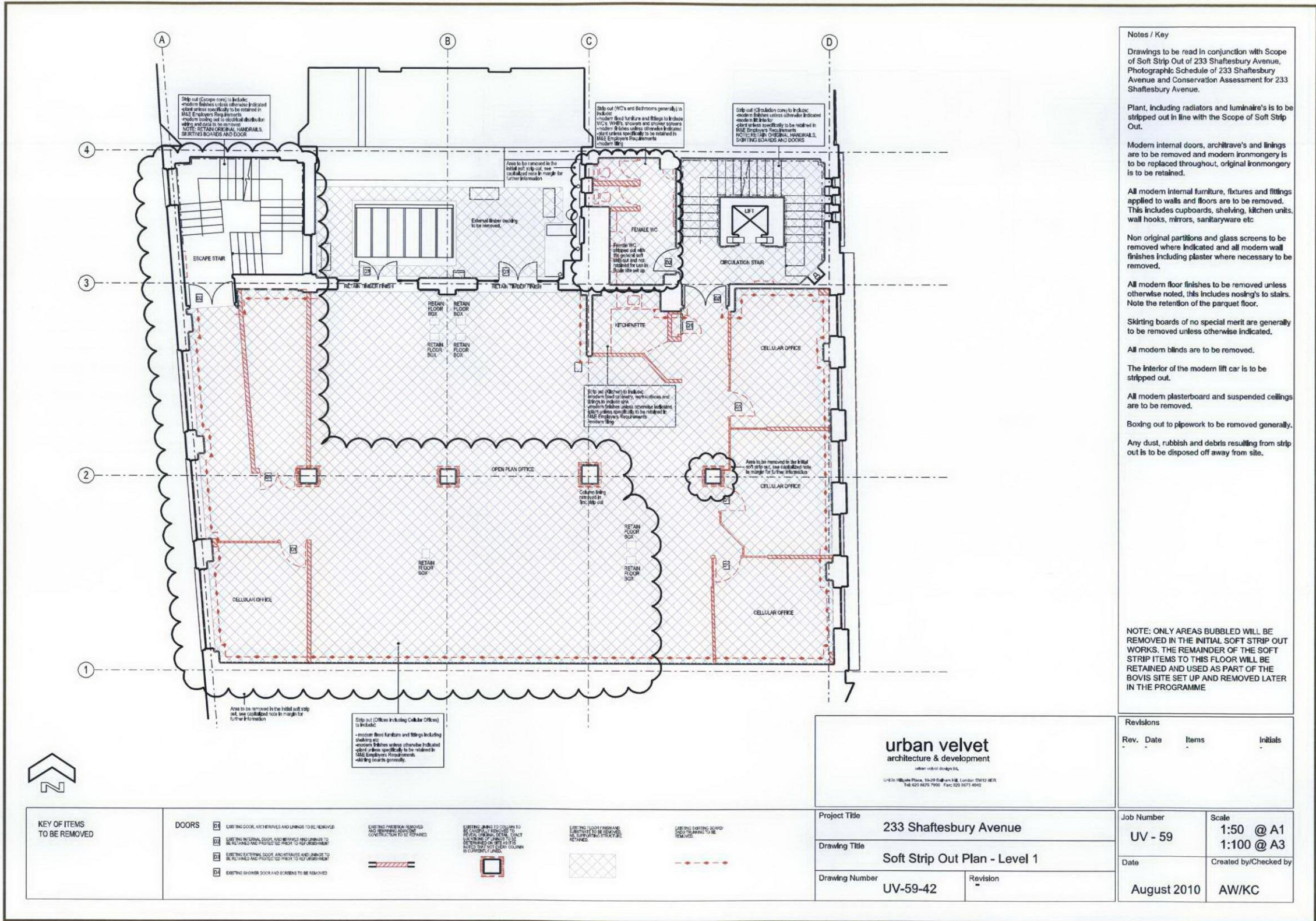
4.2 Demolition Plans

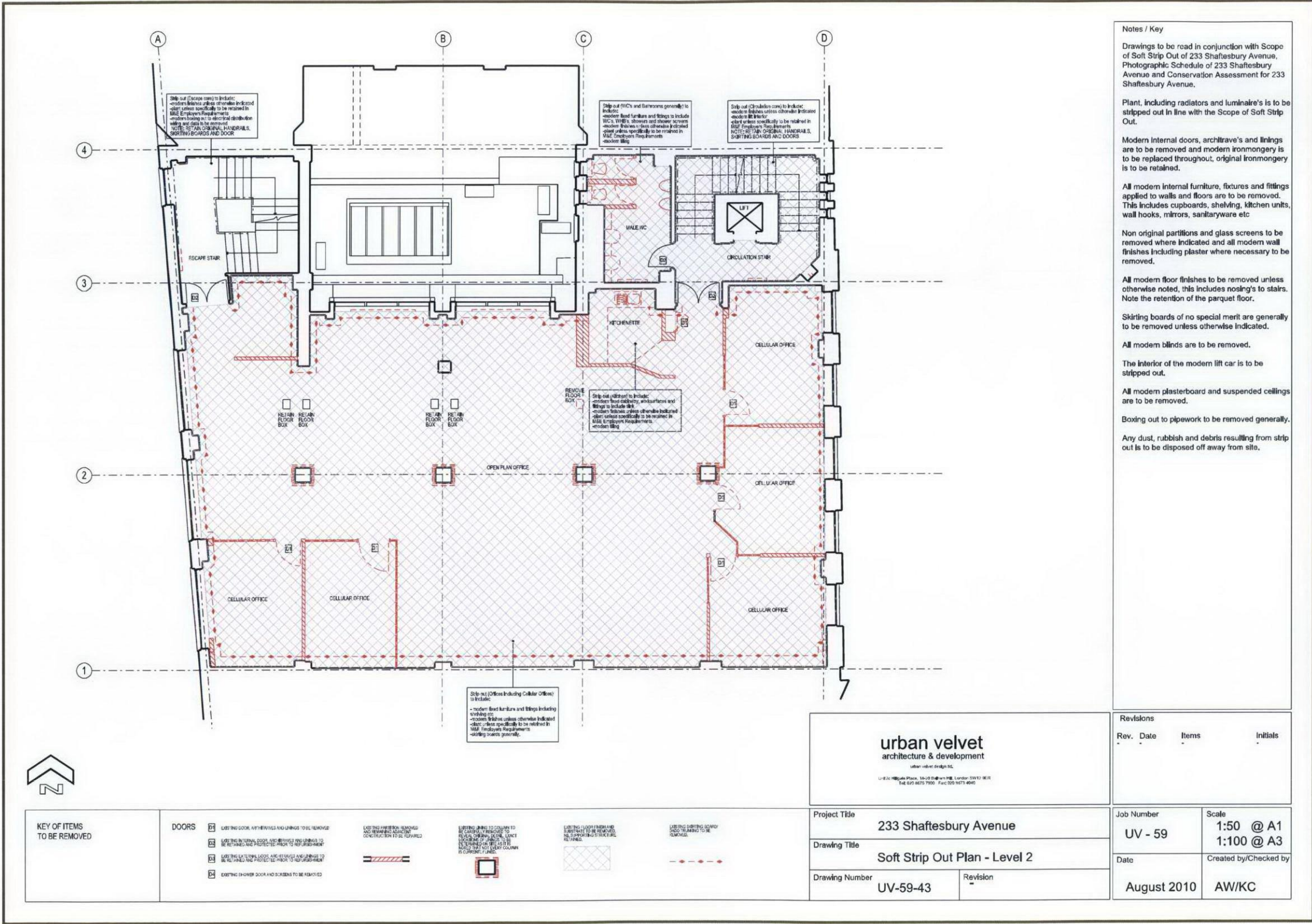
These plans form a part of the main application.

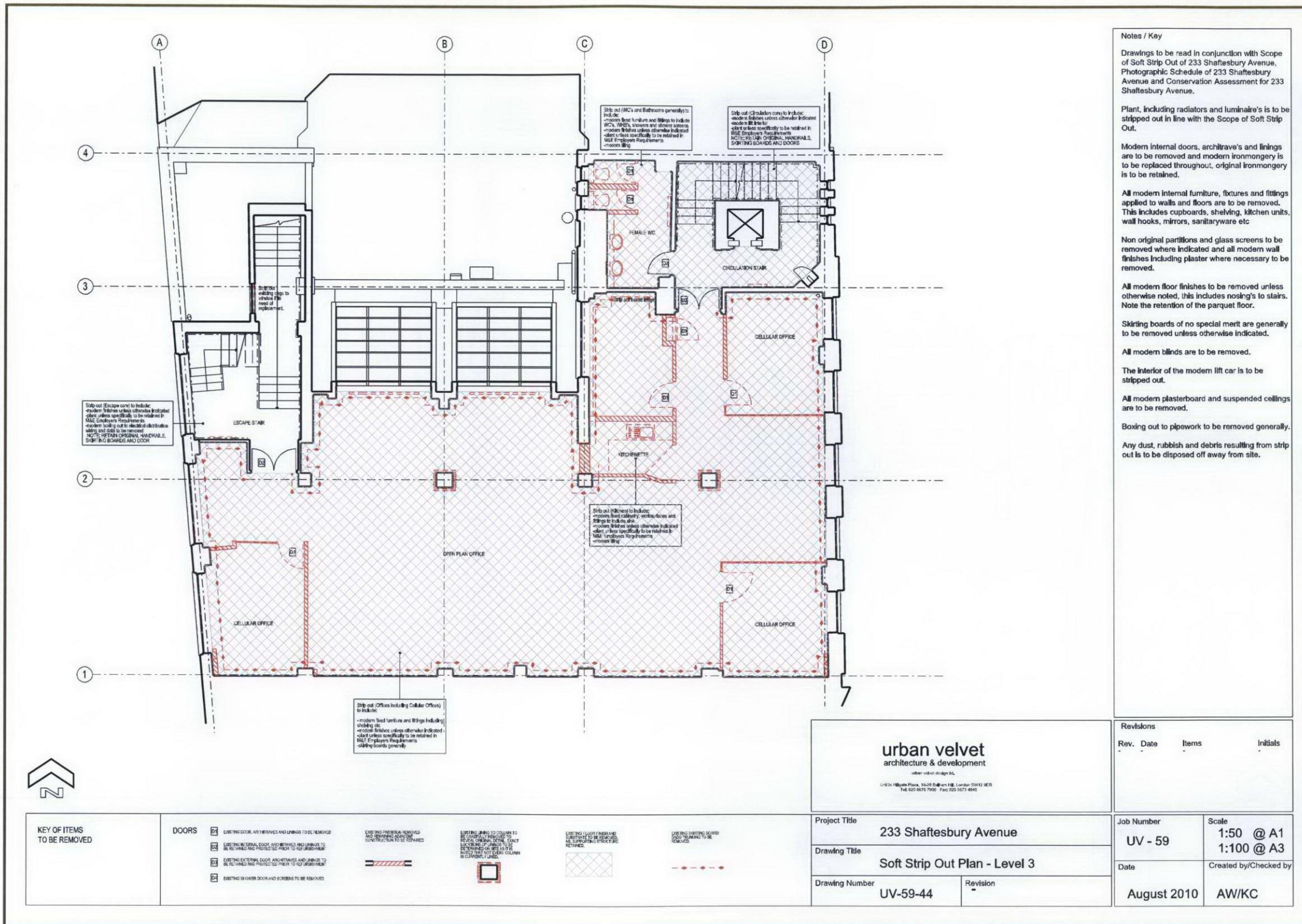
4.1 Soft Strip Out Plans

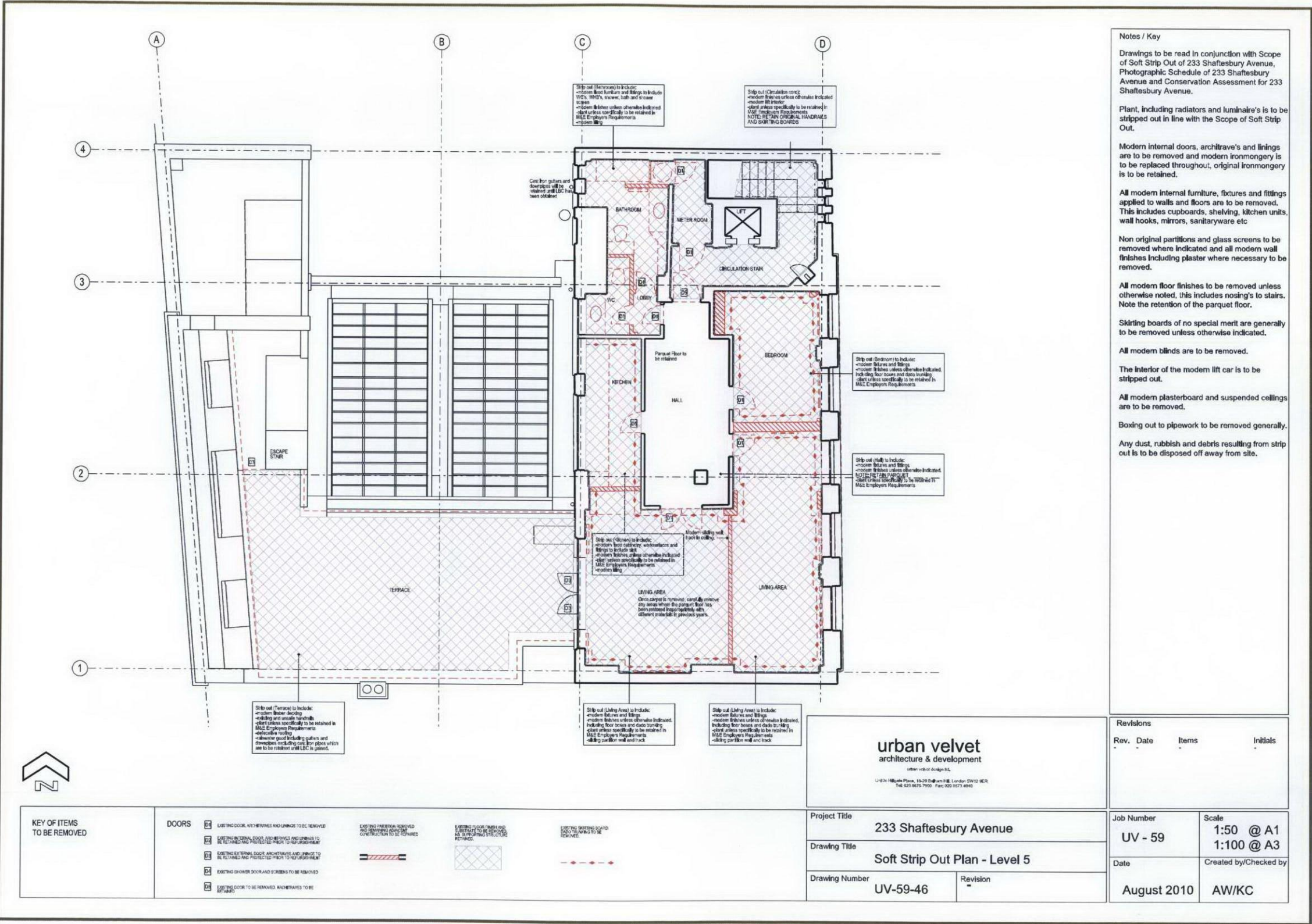


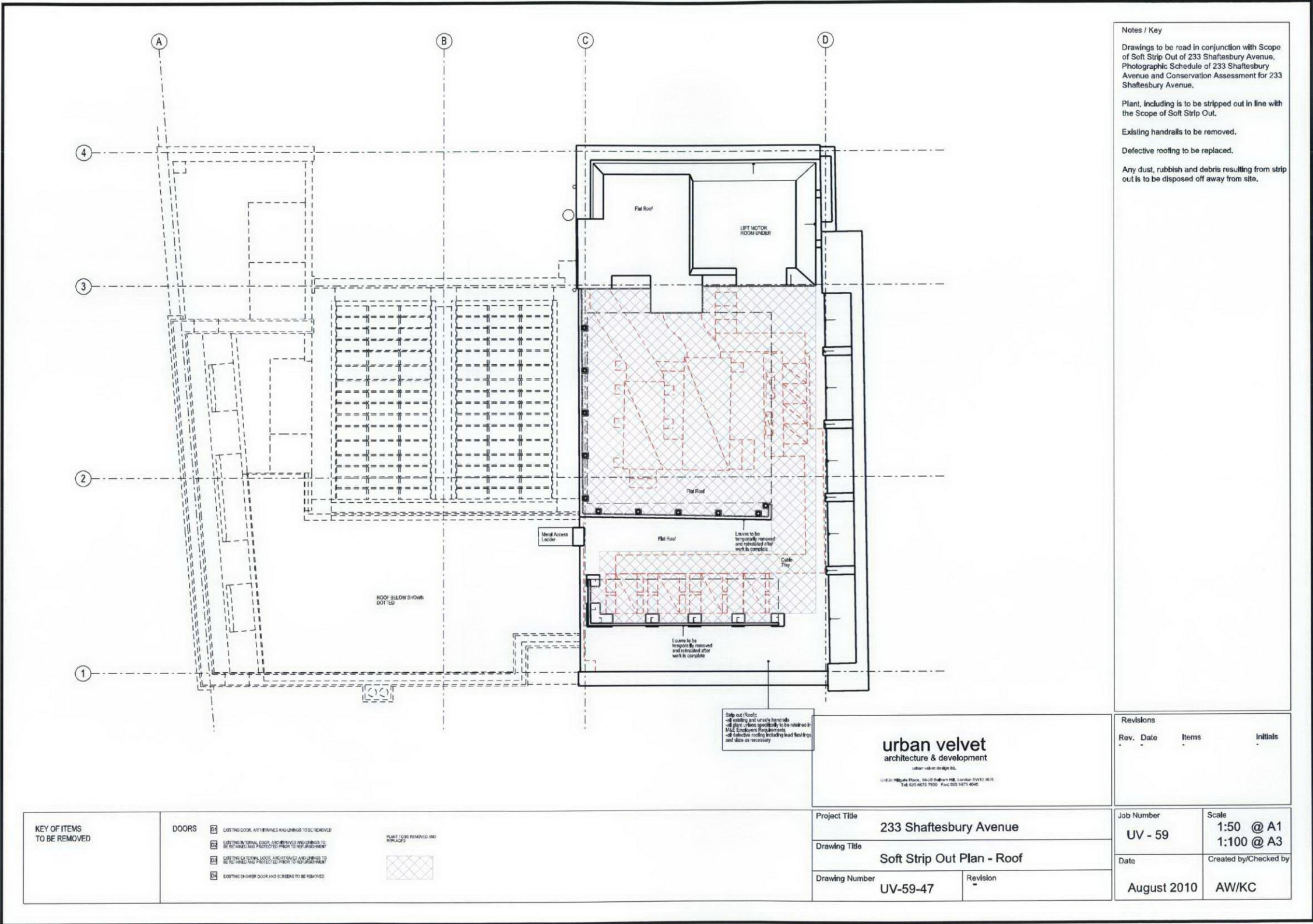




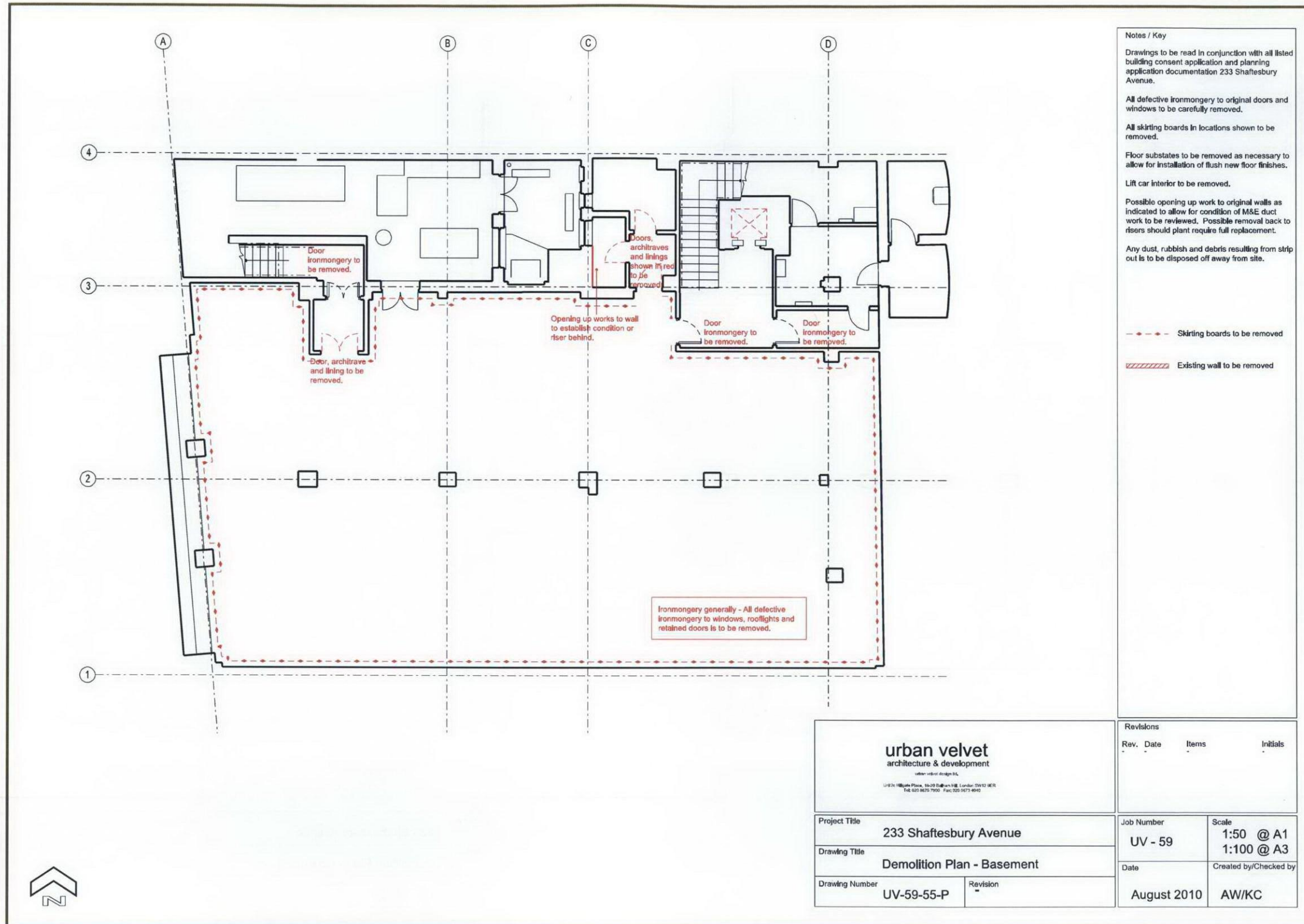


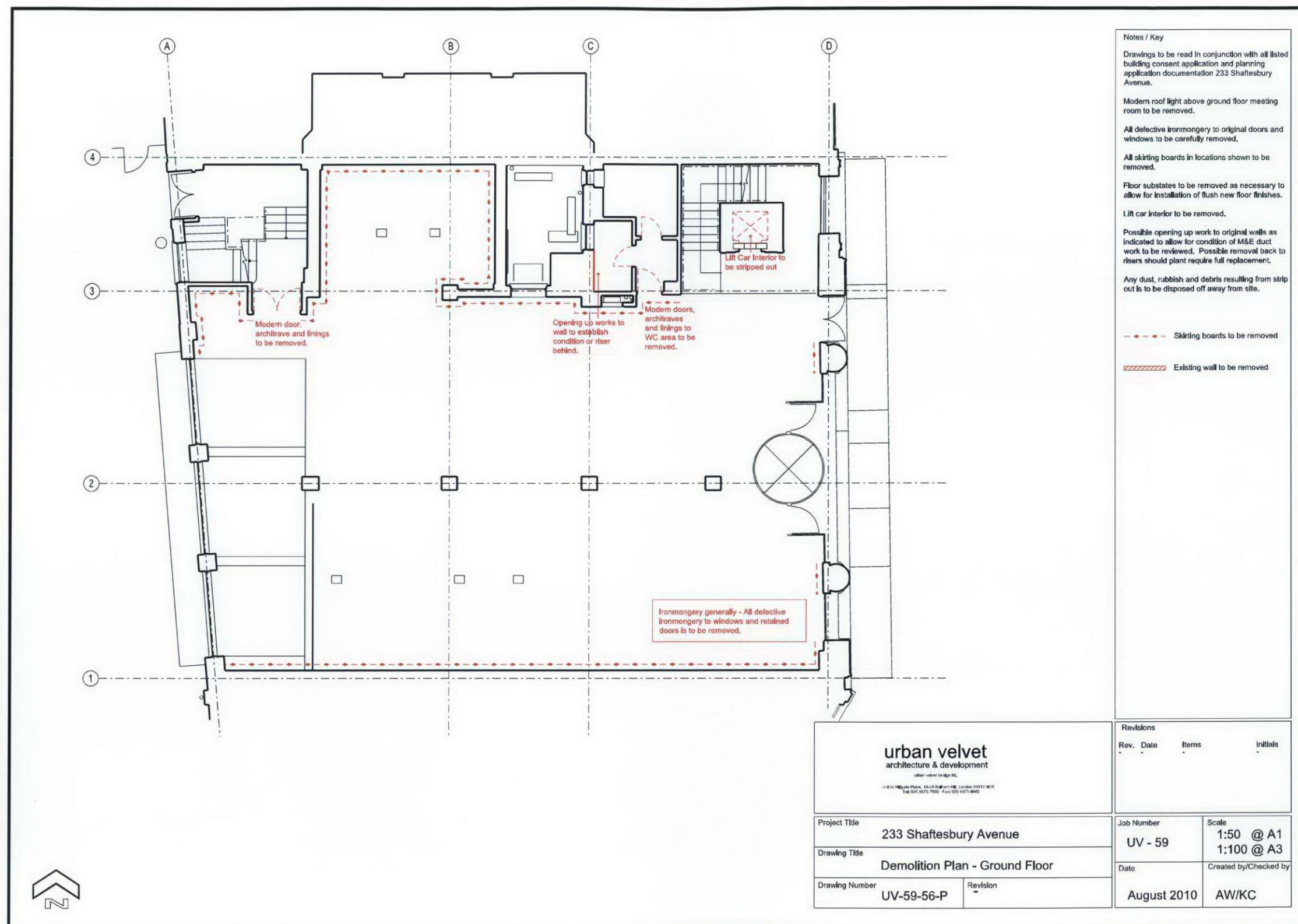


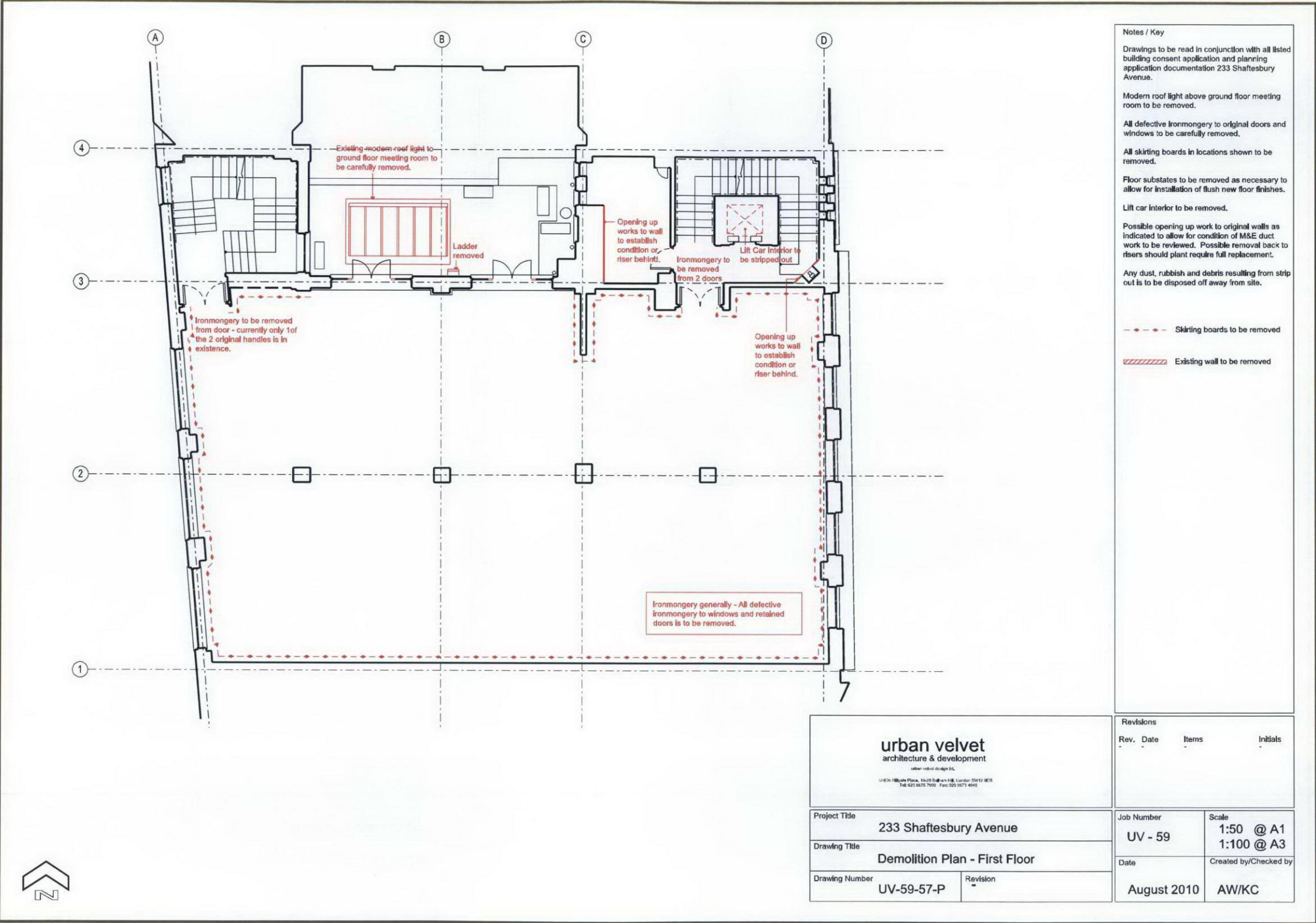




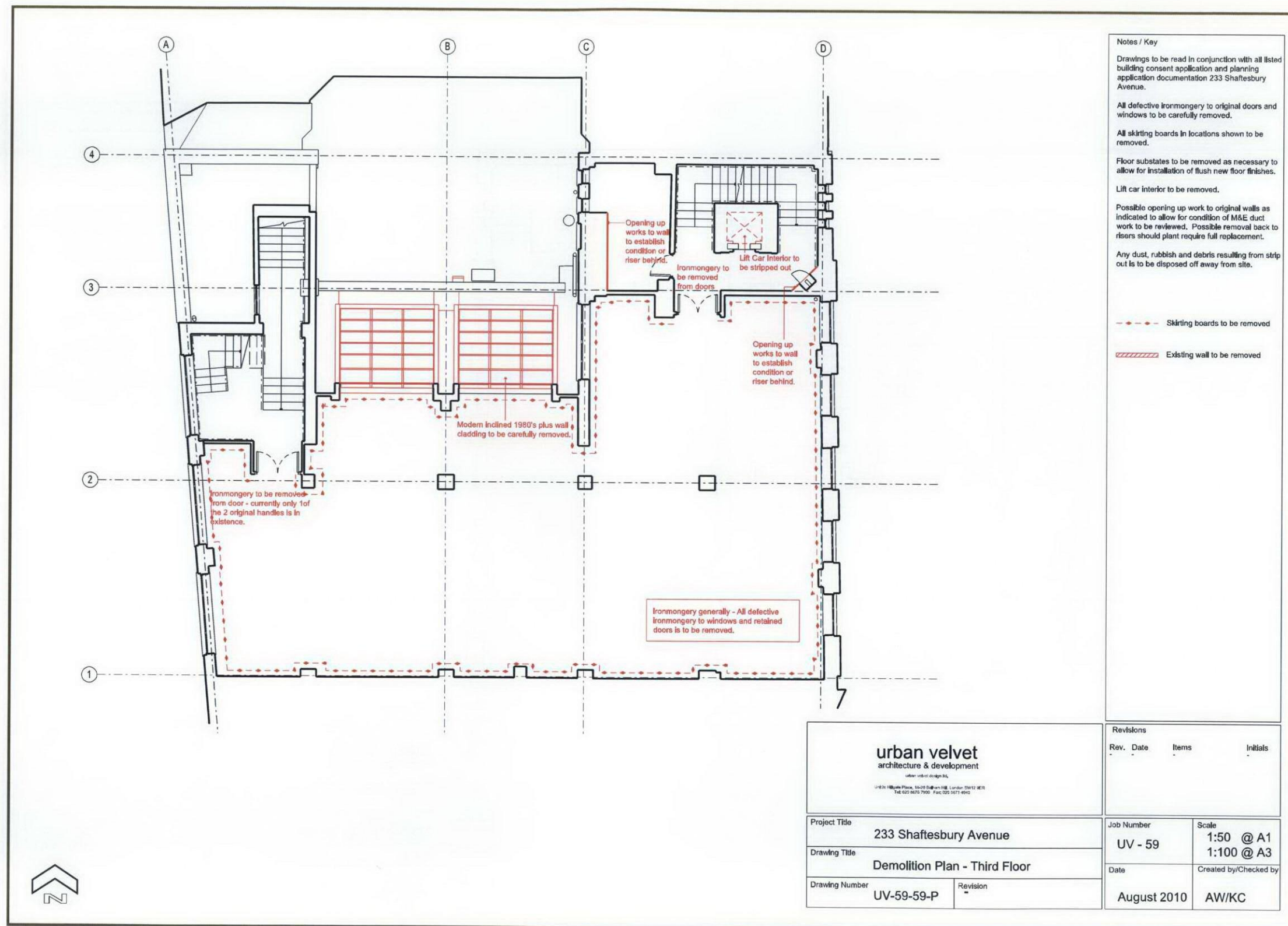
4.2 Demolition Plans

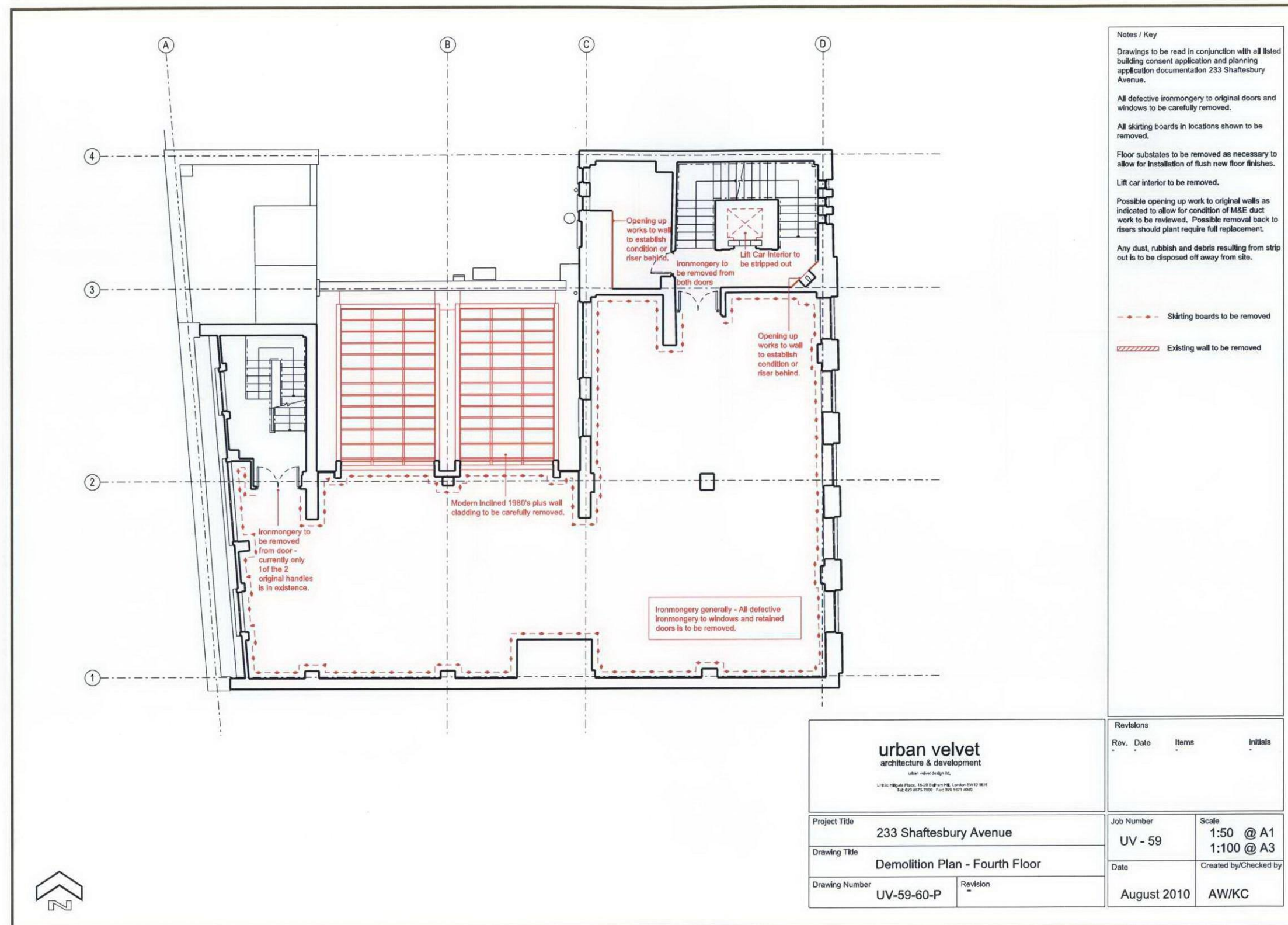


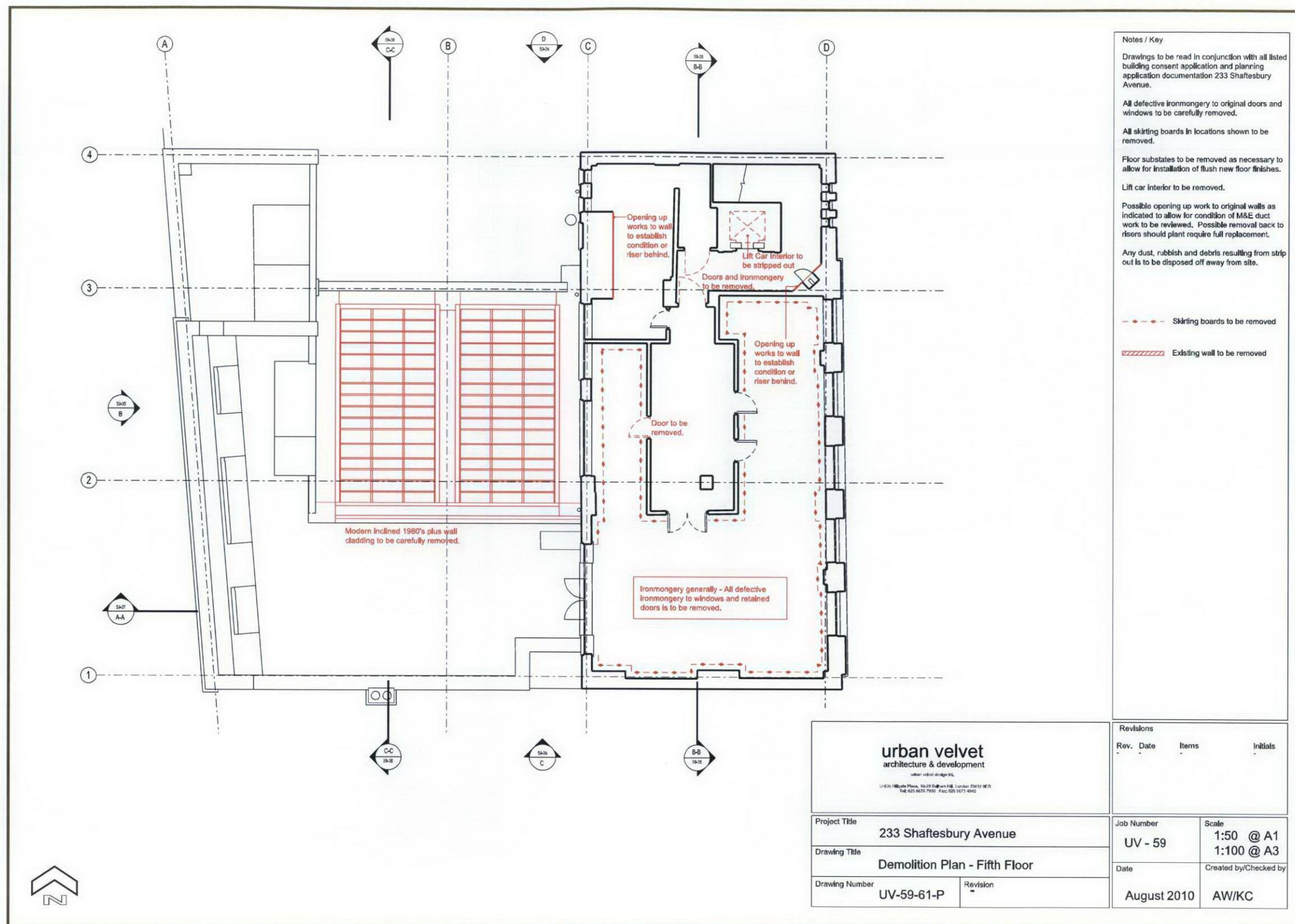


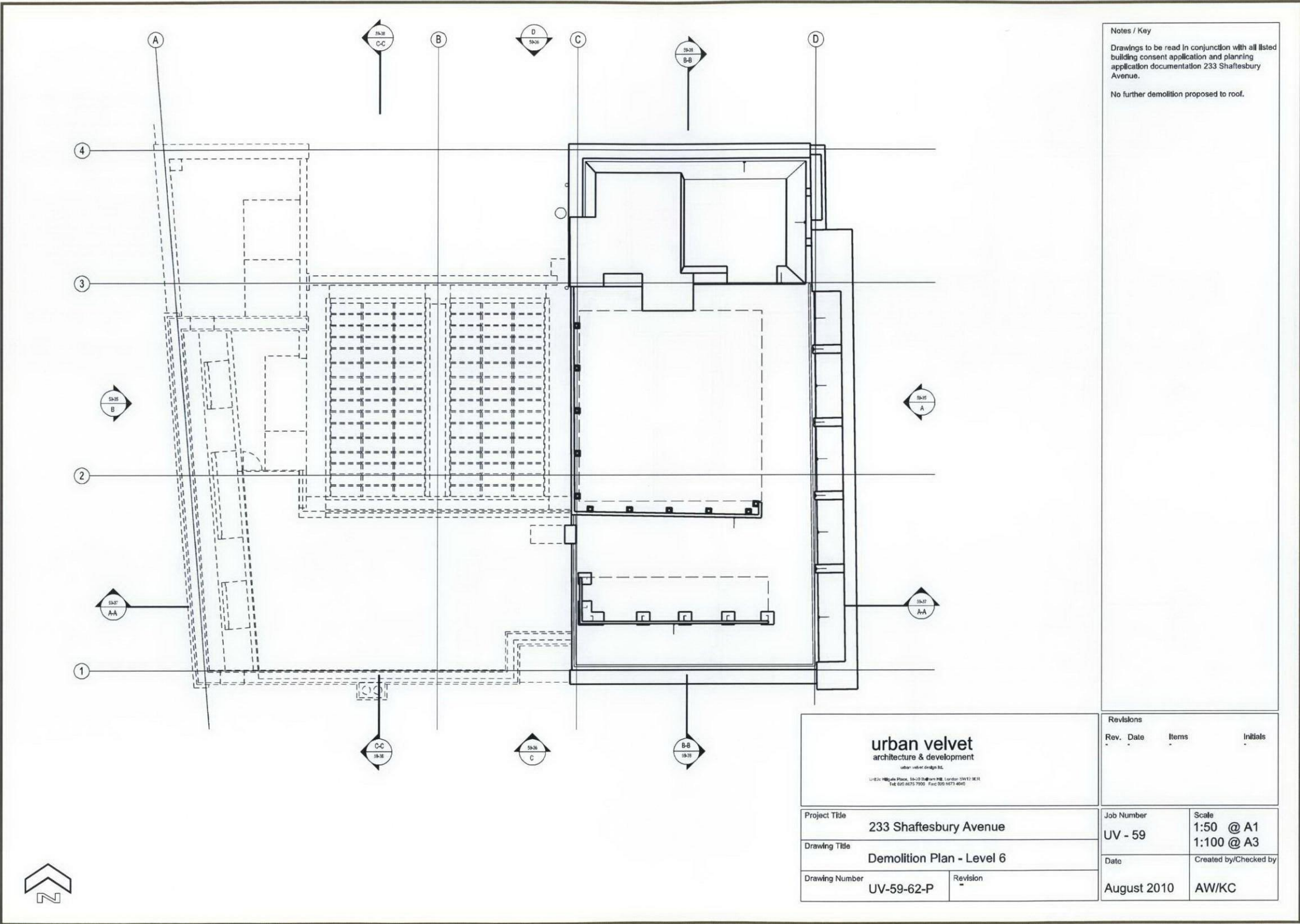


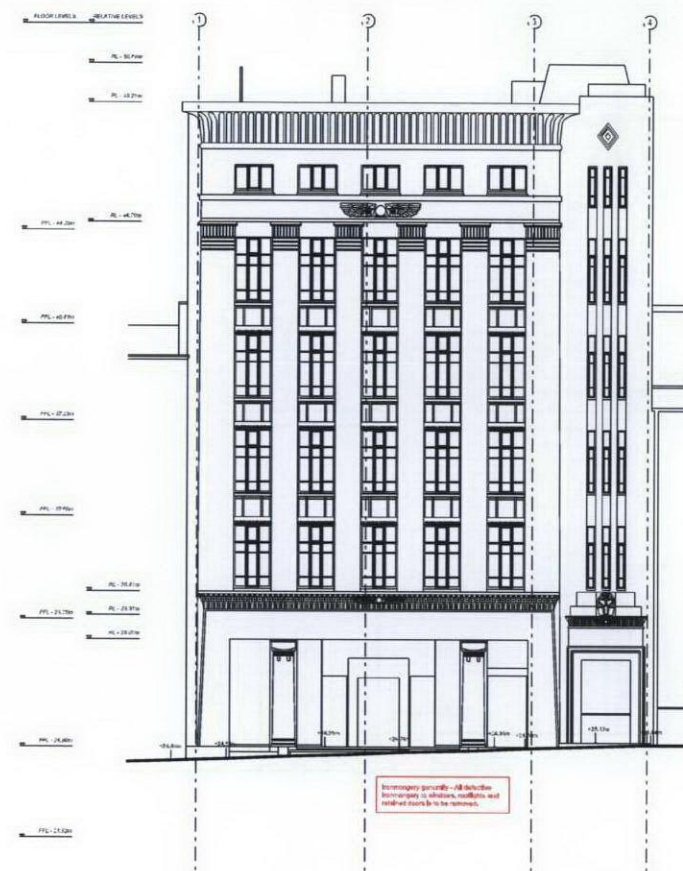




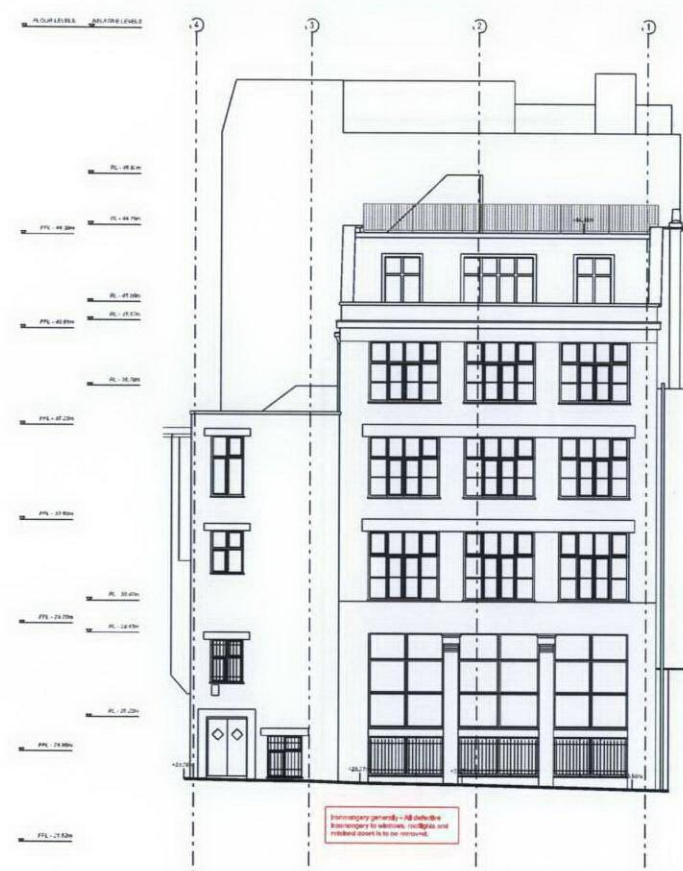








A - FRONT ELEVATION
Original Stone Elevation



B - REAR ELEVATION
Brick Elevation

Notes / Key

Drawings to be read in conjunction with all listed building consent application and planning application documentation 233 Shaftesbury Avenue.

All defective ironmongery to original doors, windows and rooflights to be carefully removed.

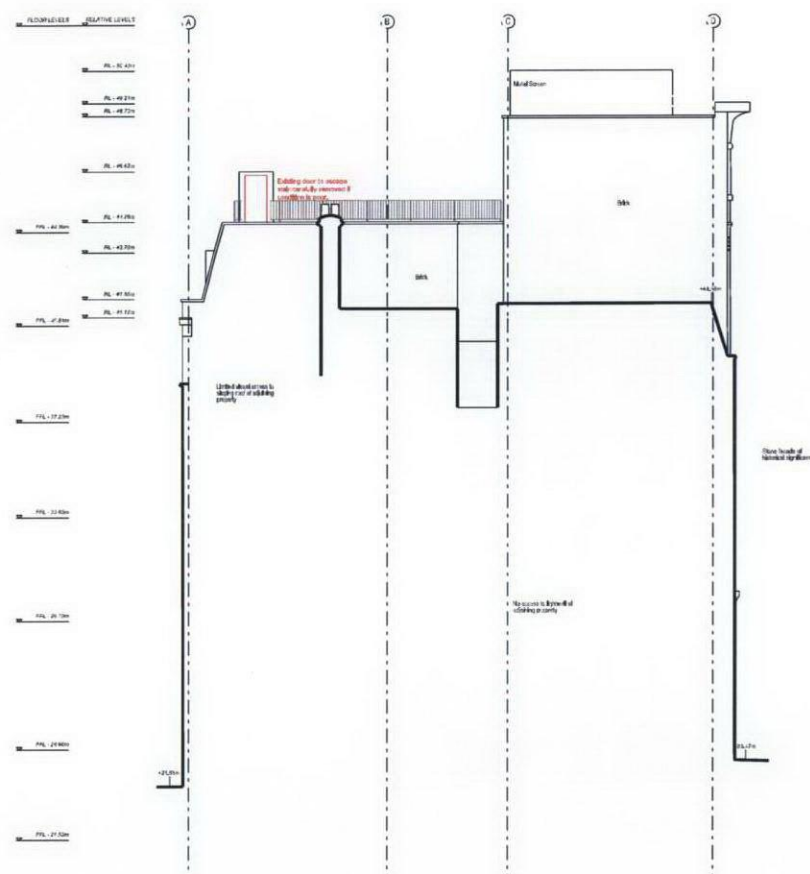
Any dust, rubbish and debris resulting from strip out is to be disposed off away from site.

urban velvet
architecture & development

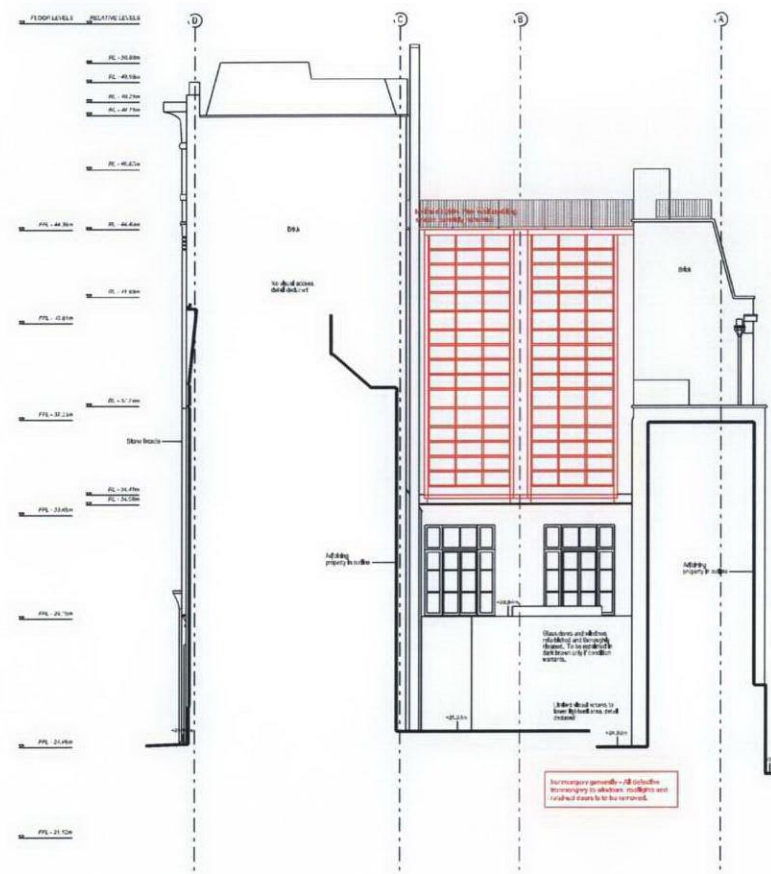
urban velvet design ltd.
Unit 24 Hillside Place, 18-20 Rathbone Hill, London WC1X 8ER
Tel: 020 9675 7700 Fax: 020 9675 4992

Revisions		
Rev.	Date	Items

Project Title 233 Shaftesbury Avenue		Job Number UV - 59	Scale 1:100@A1 1:200@A2
Drawing Title Demolition Elevations A and B		Date August 2010	Created by/Checked by AW/KC
Drawing Number UV-59-63-P	Revision 		



C - SOUTH FACING SIDE ELEVATION
Limited access to lightwell and roof at time of survey




D - NORTH FACING SIDE ELEVATION
Glass curtain wall

Notes / Key

Drawings to be read in conjunction with all listed building consent application and planning application documentation 233 Shaftesbury Avenue.

All defective ironmongery to original doors, windows and rooflights to be carefully removed.

Any dust, rubbish and debris resulting from strip out is to be disposed off away from site.

<div style="text-align: center;">  <p>urban velvet architecture & development</p> <p>urban velvet design ltd.</p> <p>11th Floor, 110 Grafton Place, 15-19 Oldham Mill, London SW1V 2JL UK Tel: 020 8675 7500 Fax: 020 8675 4940</p> </div>		<div style="text-align: center;"> <p>Revisions</p> <table border="1"> <thead> <tr> <th>Rev.</th> <th>Date</th> <th>Items</th> <th>Initials</th> </tr> </thead> <tbody> <tr> <td> </td> <td> </td> <td> </td> <td> </td> </tr> </tbody> </table> </div>		Rev.	Date	Items	Initials				
Rev.	Date	Items	Initials								
<div> <div>Project Title</div> <div>233 Shaftesbury Avenue</div> </div>		<div> <div>Job Number</div> <div>UV - 59</div> </div>									
<div> <div>Drawing Title</div> <div>Demolition Elevations C and D</div> </div>		<div> <div>Scale</div> <div>1:100@A1 1:200@A3</div> </div>									
<div> <div>Drawing Number</div> <div>UV-59-64-P</div> </div>	<div> <div>Revision</div> <div> </div> </div>	<div> <div>Date</div> <div>August 2010</div> </div>									
		<div> <div>Created by/Checked by</div> <div>AW/KC</div> </div>									