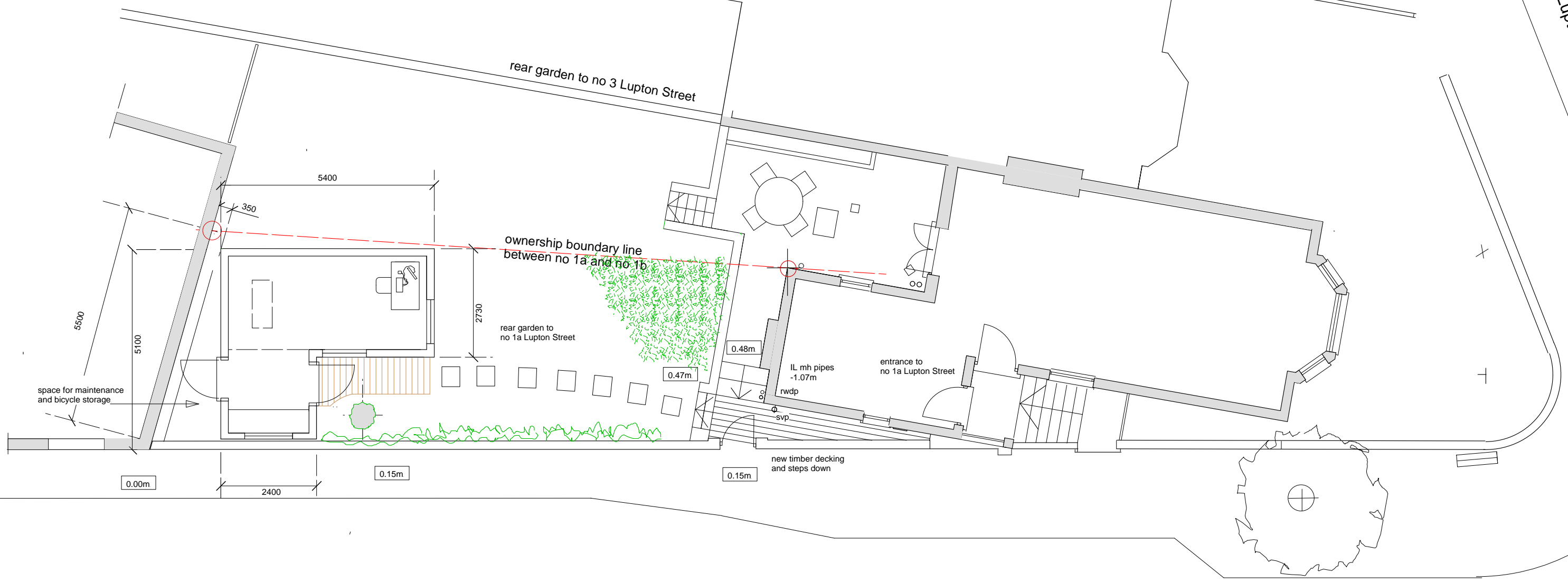
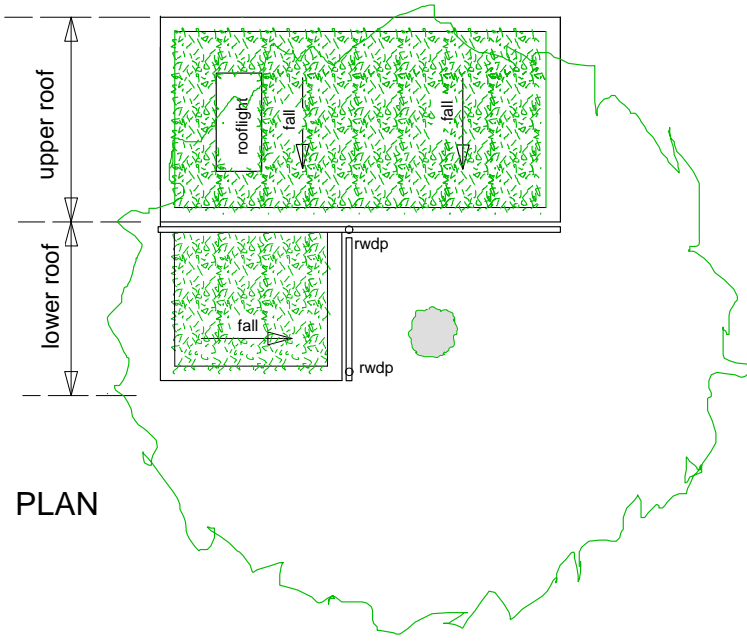
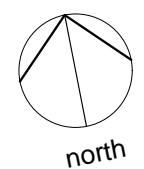


ROOF PLAN



Railey Mews

Levels are approximate and are to be checked



rev A: studio positioned behind wall

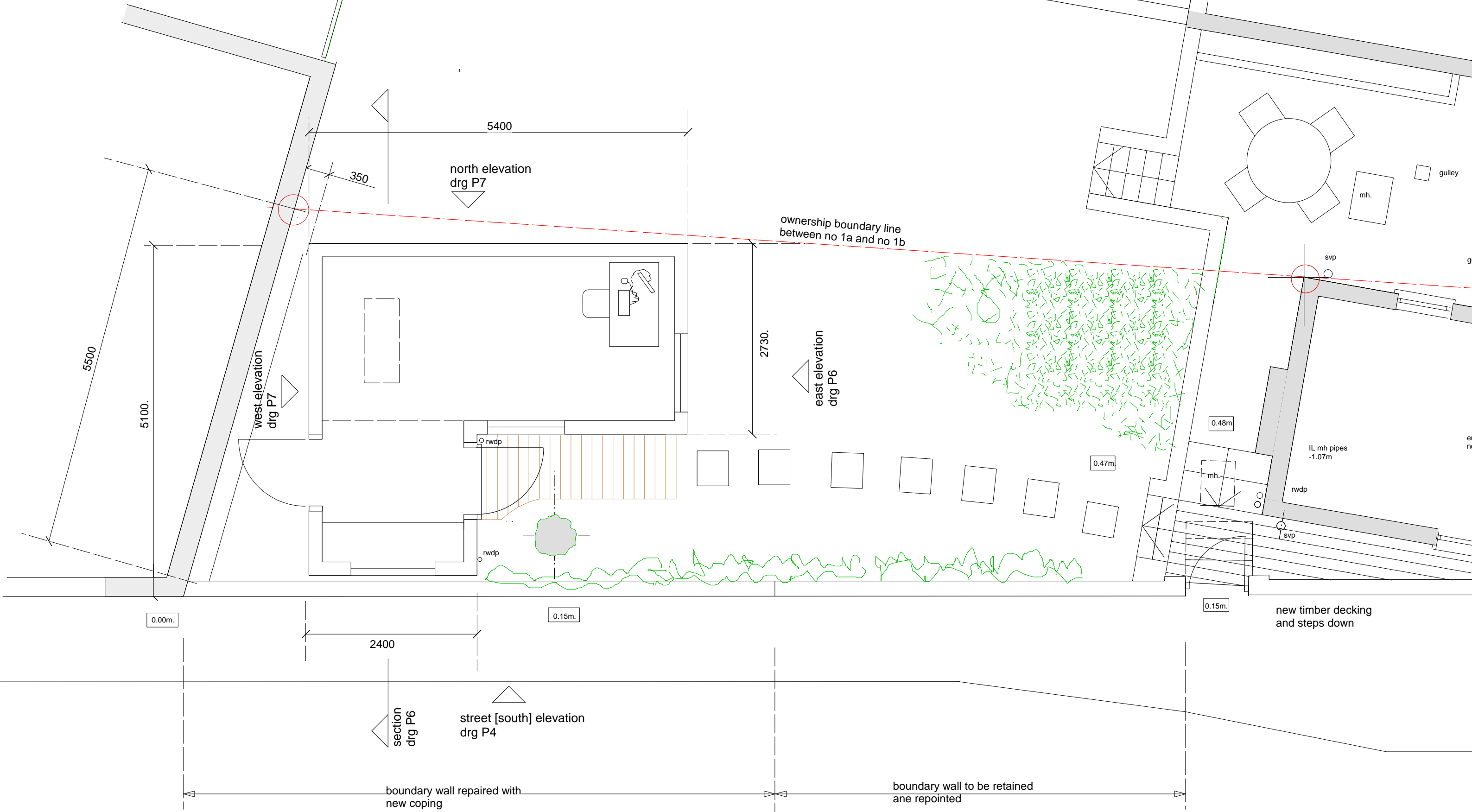
1a Lupton Street London NW5 2JA
new garden studio
PROPOSED GROUND PLAN
1/100 July 2010 rev A drg P3



rev A: studio positioned behind wall

1a Lupton Street	London NW5 2JA
new garden studio	
PROPOSED STREET ELEVATION	
1/100	July 2010
rev A	drg P4

proposed south elevation to Railey Mews



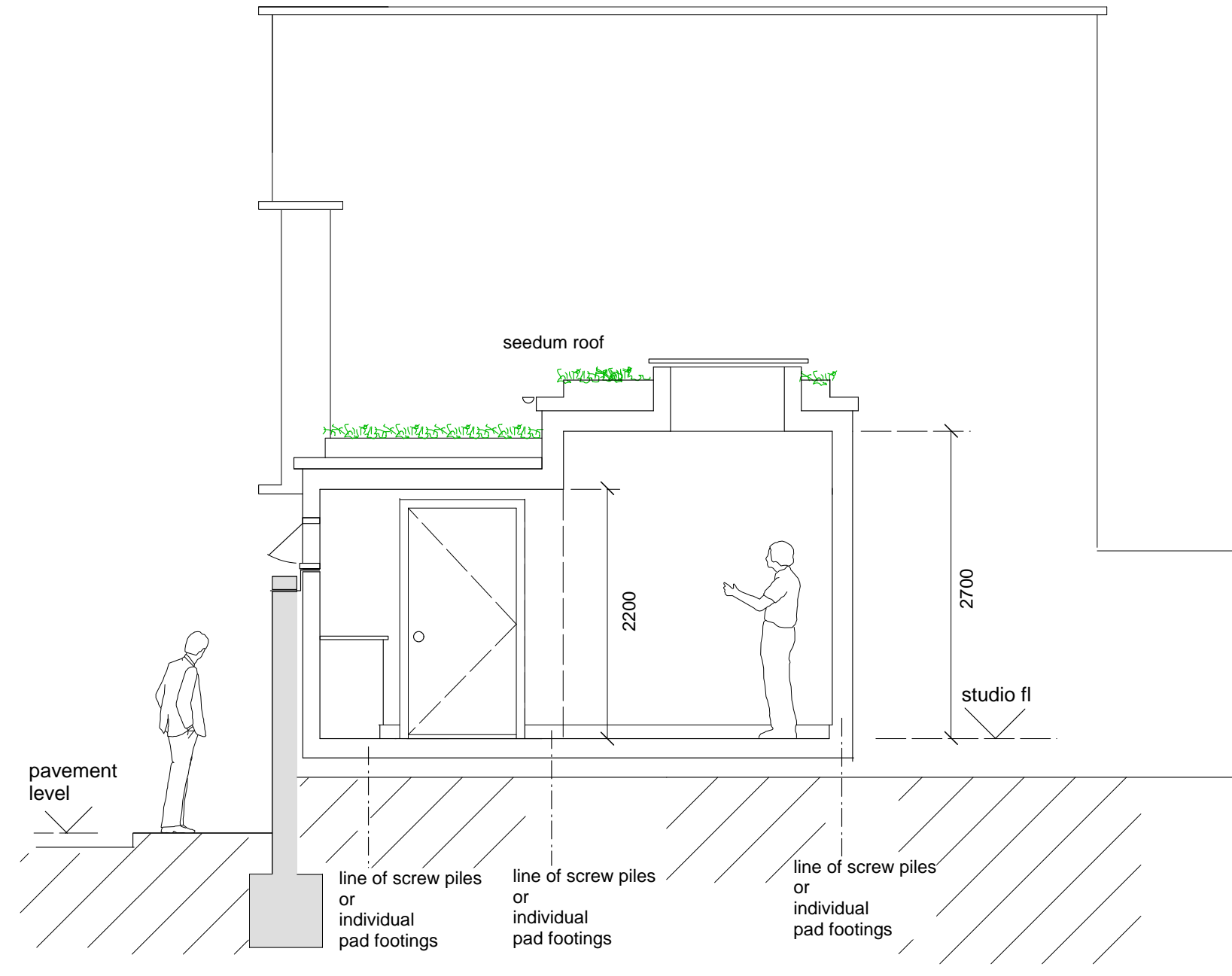
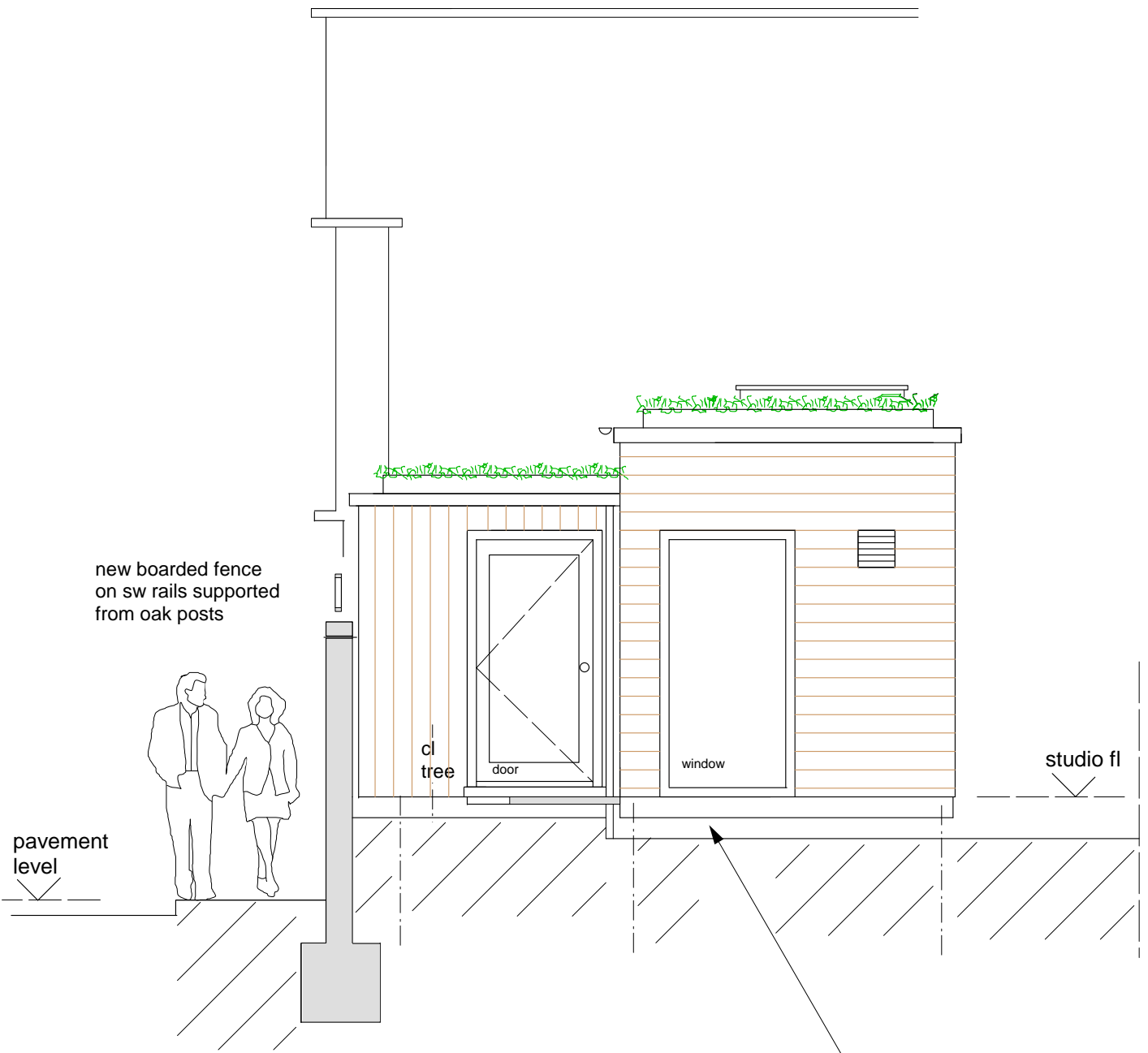
Railey Mews

Gross internal area: 16.3 sq m
Levels are approximate and to be checked



rev B: update 9.10.10
rev A: studio behind wall 4.10.10

1a Lupton Street London NW5 2JA	
new garden studio	
PROPOSED GROUND PLAN	
1/50 July 2010	rev B drg P5



150mm void under ground floor slab with geotextile matting on ground cleared of vegetation.

east elevation

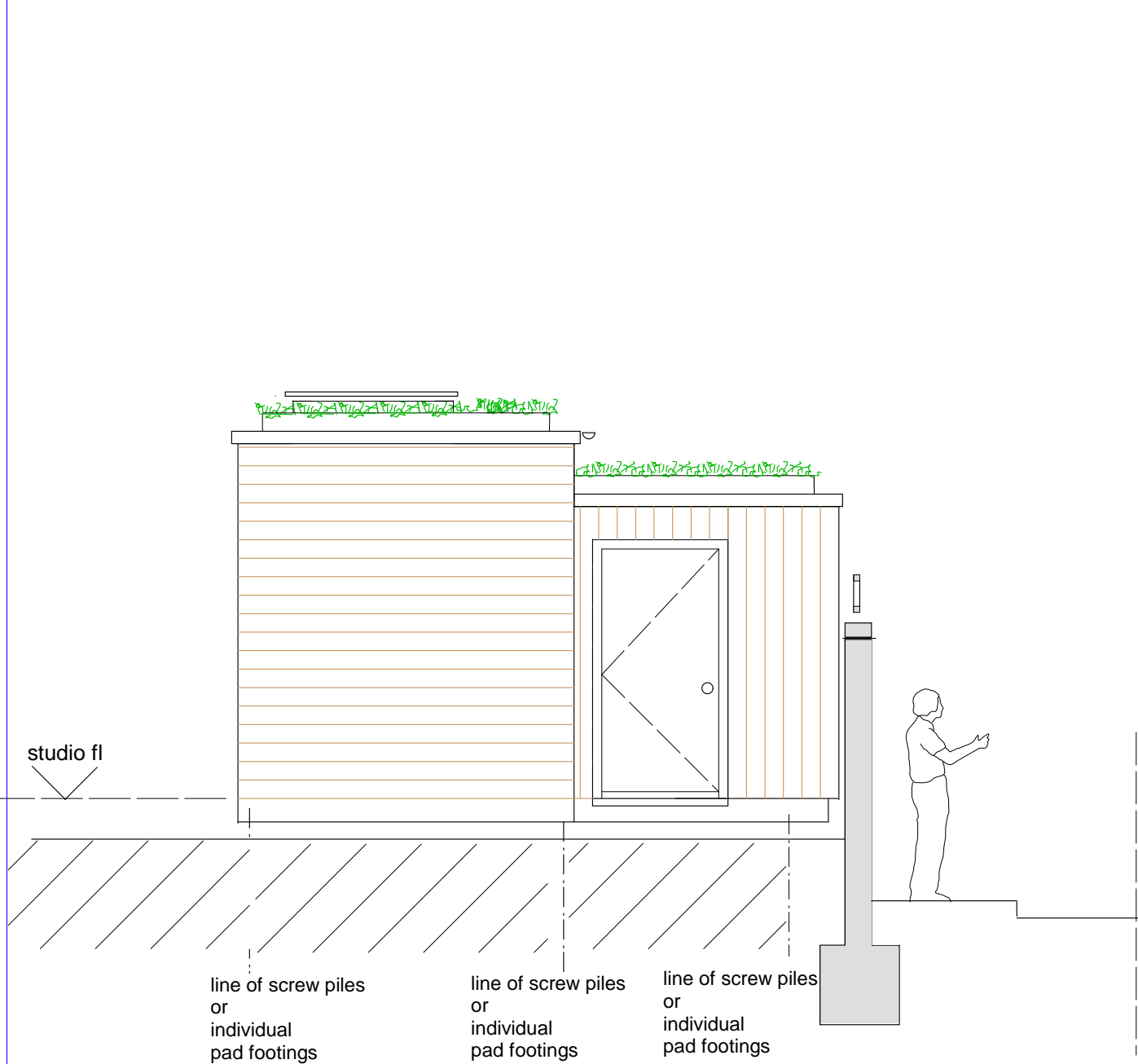
transverse section

Typical seedum roof construction:
 120mm seedum medium on
 Fleeze layer on
 50mm resevoir board on
 underlay on
 Alwtra Roof System, Evalon V single membrane on
 120mm Kingspan insulation board on
 Continuous control barrier on
 18mm WBP ply on joists

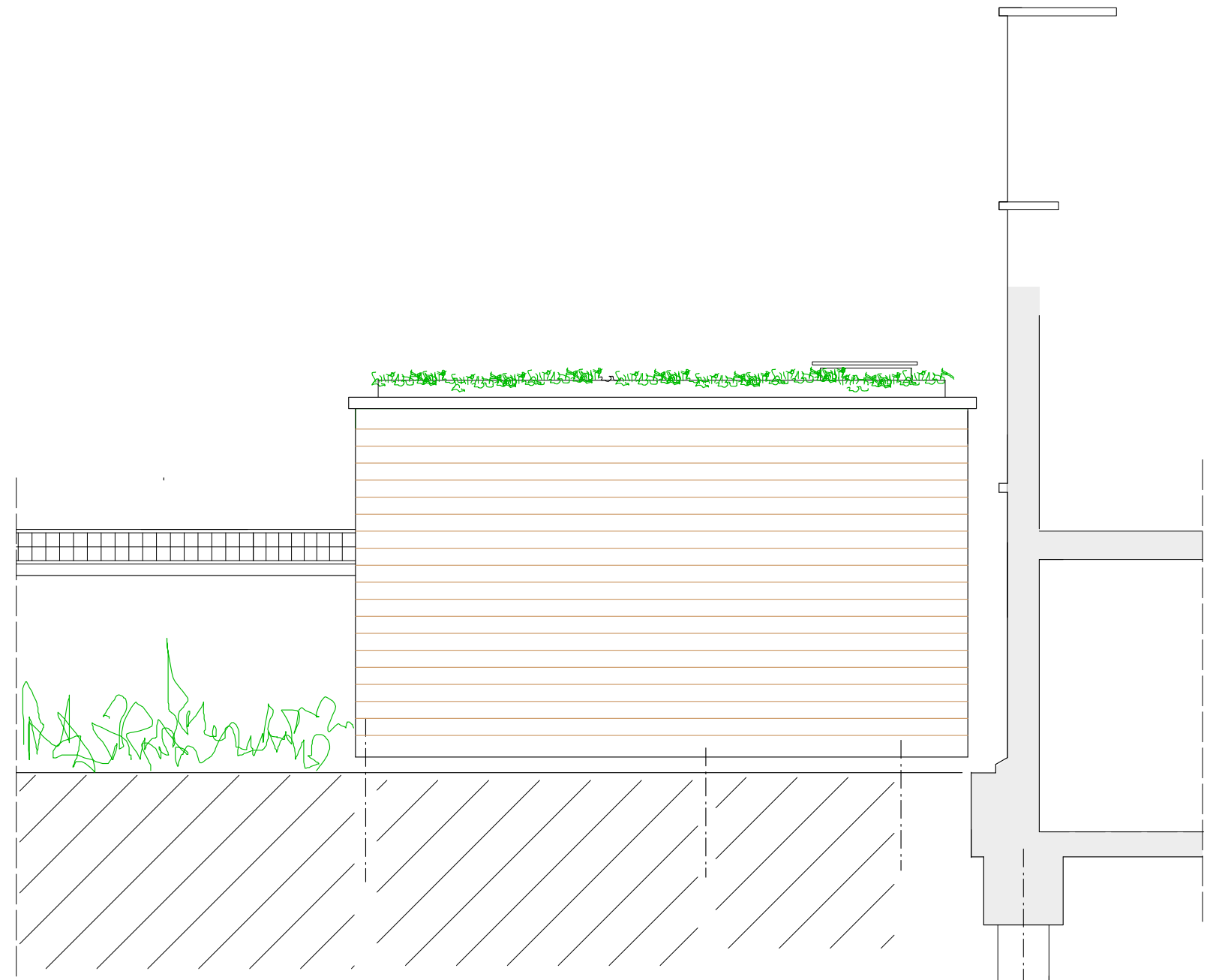
System in accordance with ICB Ltd. tel: 01202 5792208

rev B: update 9.10.10
 rev A: studio behind the boundary wall

1a Lupton Street London NW5 2JA	
new garden studio	
PROPOSED EAST ELEVATION + SECTION	
1/ 50 July 2010	rev B drg P6



proposed west elevation



proposed north elevation

rev B: update
 rev A: studio behind the boundary wall

1a Lupton Street London NW5 2JA	
new garden studio	
PROPOSED WEST & NORTH ELEVATIONS	
1/50 July 2010	rev B drg P7