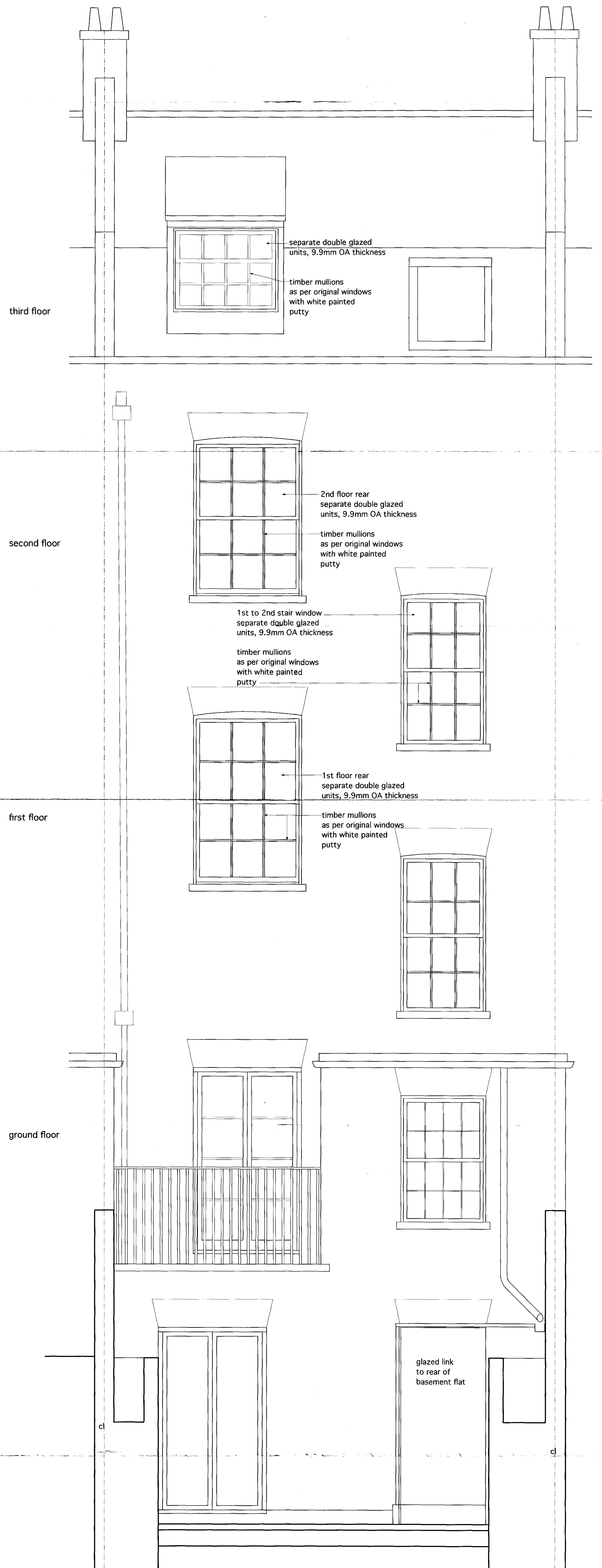


existing rear elevation 1:20



proposed rear elevation 1:20

RECEIVED 21 OCT 2010

Notes:

Proposed new 9.9mm thick double glazed units to replace singles glazing on 1st, 2nd and 3rd floors rear elevation
All new windows new glazing to be retained to outside by putty as per original windows
All new windows to be made dimensionally as per original windows

RECEIVED 21 OCT 2010