

2 LOCATION PLAN
1 : 500

1 SITE PLAN
1 : 200

General notes:

This drawing is copyright of KSR architects. This drawing must be read in conjunction with the designer's risk assessment, specification and all other relevant documentation and drawings. KSR architects accept no liability for any expense, loss or damage of whatsoever nature and however arising from any variation made to this drawing or in the execution of the work to which it relates which has not been referred to them and their approval obtained.
Do not scale from this drawing or the digital data, only figured dimensions are to be used. For Planning refer to linear scale.
Check all dimensions on site.

Notes/Legends

Stamp

C-D

Key Plan

KSR architects
14 Greenfield Street
London
NW1 0ND

t: + 44 (0)20 7692 5000
f: + 44 (0)20 7692 5050
www.ksr-architects.com

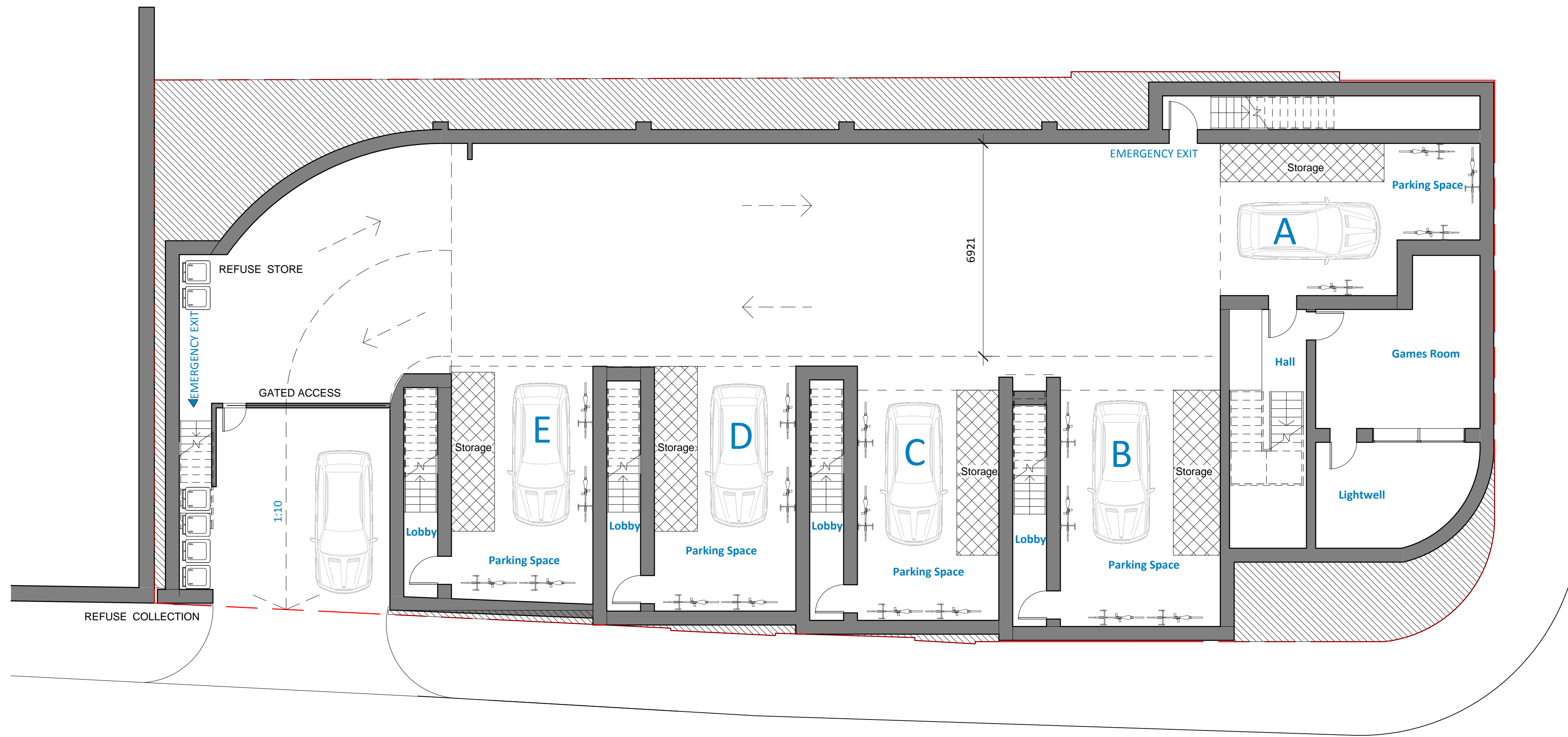
KSR
architects

Project:
Elsworthy Rise NW3 3NL

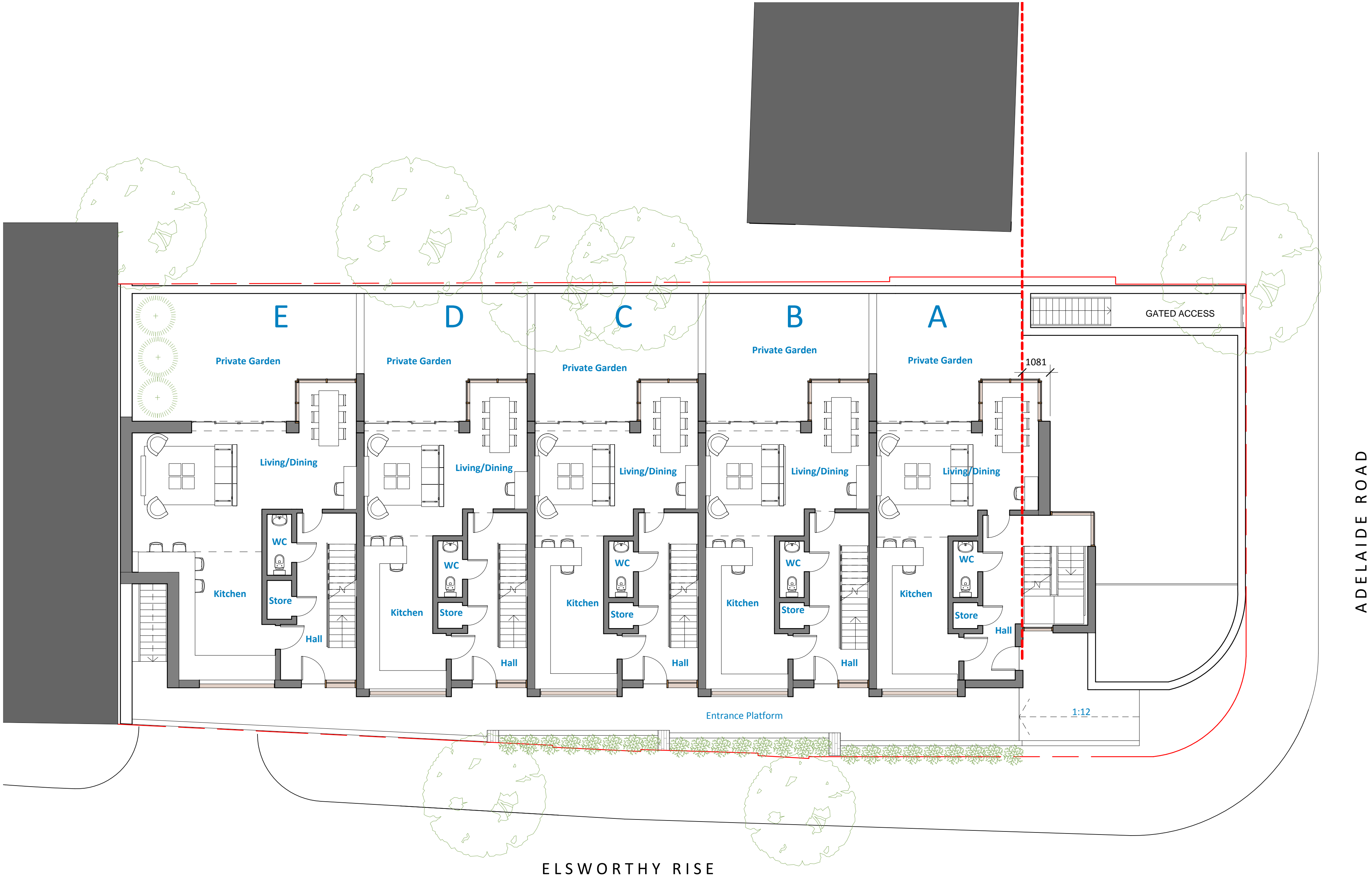
Title:
SITE LOCATION PLAN

Rev	Notes	dd mm yy	By	Chd	Date	09/23/10	Drawn By:	Author	Checked	Check	Project Ref	Drawing No	Revision
					Scale	As indicated	@A1 /	@A3			ADL	ADL - 100	

© KSR architects



ELSWORTHY RISE



General notes:

This drawing is copyright of KSR architects. This drawing must be read in conjunction with the designer's risk assessment, specification and all other relevant documentation and drawings. KSR architects accept no liability for any expense, loss or damage of whatsoever nature and however arising from any variation made to this drawing or in the execution of the work to which it relates which has not been referred to them and their approval obtained.

Do not scale from this drawing or the digital data, only figured dimensions are to be used. For Planning refer to linear scale.

Check all dimensions on site.

Notes/Legends

Stamp

Key Plan

F2 Stage F coordination		28/07/2010		Author		Checker	
Rev	Notes	dd mm yy	By	Chd	Date	Drawn By	Author

© KSR architects

KSR architects
14 Greenland Street
London
NW1 0ND

t: + 44 (0)20 7692 5000
f: + 44 (0)20 7692 5050
www.ksr-architects.com

KSR
architects

Project:
Elsworthy Rise NW3 3NL

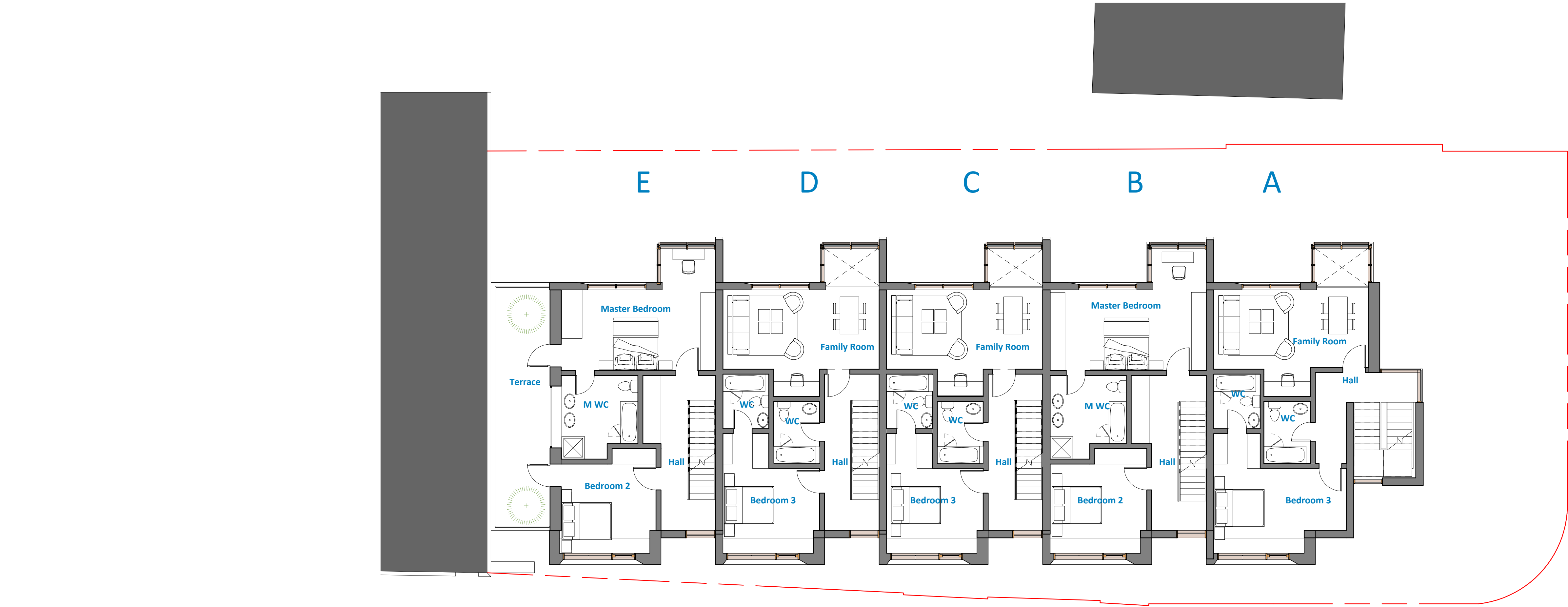
Title:
GROUND FLOOR

Scale: 1 : 100 @A1 / @A3

Project Ref:
ADL

Drawing No:
ADL - 102 A

Revision:
A



General notes:

This drawing is copyright of KSR architects. This drawing must be read in conjunction with the designer's risk assessment, specification and all other relevant documentation and drawings. KSR architects accept no liability for any expense, loss or damage of whatsoever nature and however arising from any variation made to this drawing or in the execution of the work to which it relates which has not been referred to them and their approval obtained.
Do not scale from this drawing or the digital data, only figured dimensions are to be used. For Planning refer to linear scale.
Check all dimensions on site.

Notes/Legends

Stamp

Key Plan

KSR architects
14 Greenland Street
London
NW1 0ND

t: + 44 (0)20 7692 5000
f: + 44 (0)20 7692 5050
www.ksr-architects.com

KSR
architects

Project:
Elsworthy Rise NW3 3NL

Title:
FIRST FLOOR

F2 Stage F coordination 29/07/2010 LRG Checker

Rev	Notes	dd mm yy	By	Chd	Date	Drawn By:	Check
					29/07/2010	LRG	

© KSR architects

Scale: 1 : 100 @A1 / @A3

Project Ref

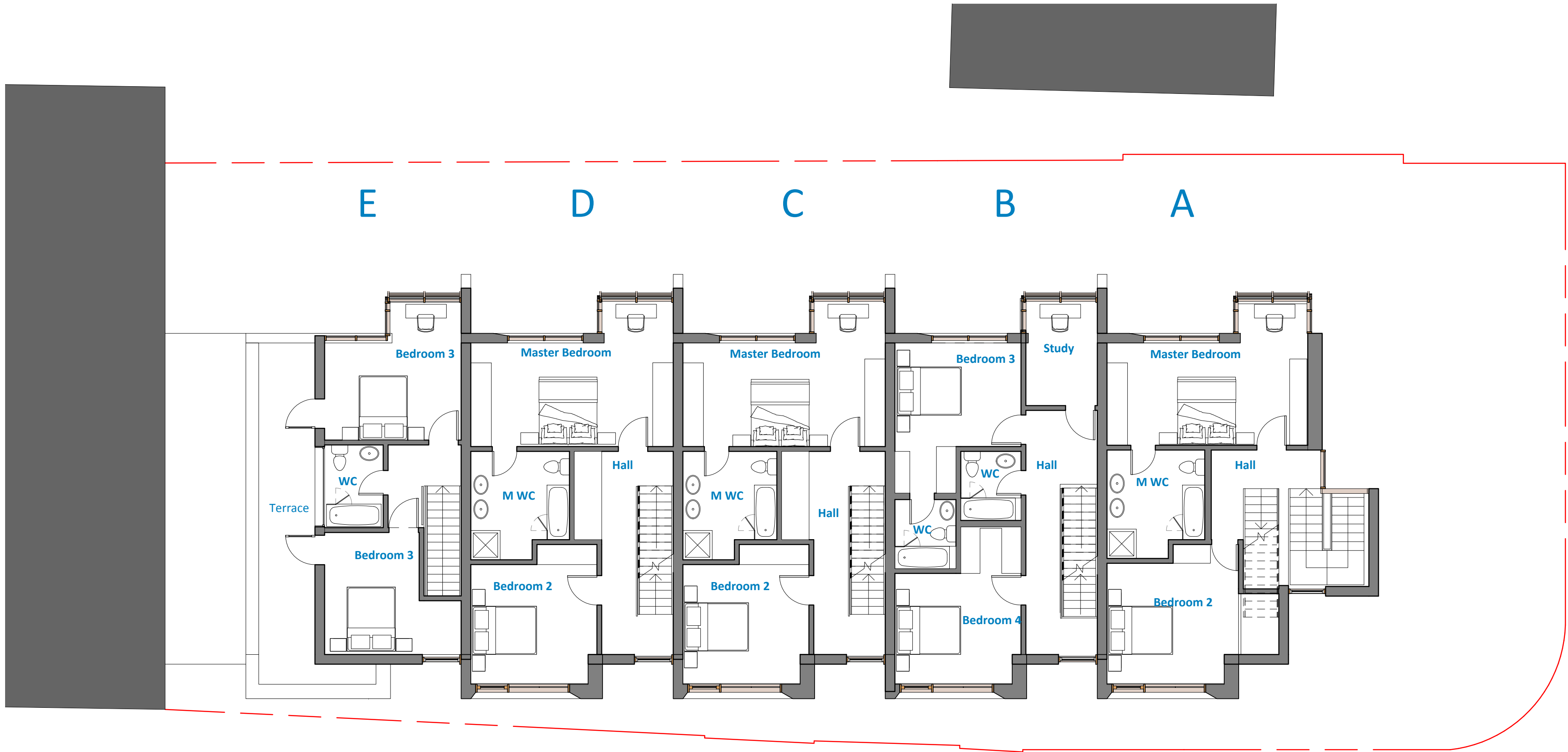
ADL

Drawing No

ADL - 103 A

Revision

A



General notes:

This drawing is copyright of KSR architects. This drawing must be read in conjunction with the designer's risk assessment, specification and all other relevant documentation and drawings. KSR architects accept no liability for any expense, loss or damage of whatsoever nature and however arising from any variation made to this drawing or in the execution of the work to which it relates which has not been referred to them and their approval obtained.
Do not scale from this drawing or the digital data, only figured dimensions are to be used. For Planning refer to linear scale.
Check all dimensions on site.

Notes/Legends

Bump

Key Plan

KSR architects
14 Greenland Street
London
NW1 0ND

t: + 44 (0)20 7692 5000
f: + 44 (0)20 7692 5050
www.ksr-architects.com



Project:
Elsworth Rise NW3 3NL

Title:
SECOND FLOOR

F2 Stage F coordination

29/07/2010 Author Checker

Rev Notes

Date 29/07/2010

Drawn By: Author

Checked: Checker

Project Ref

Drawing No

Revision

© KSR architects

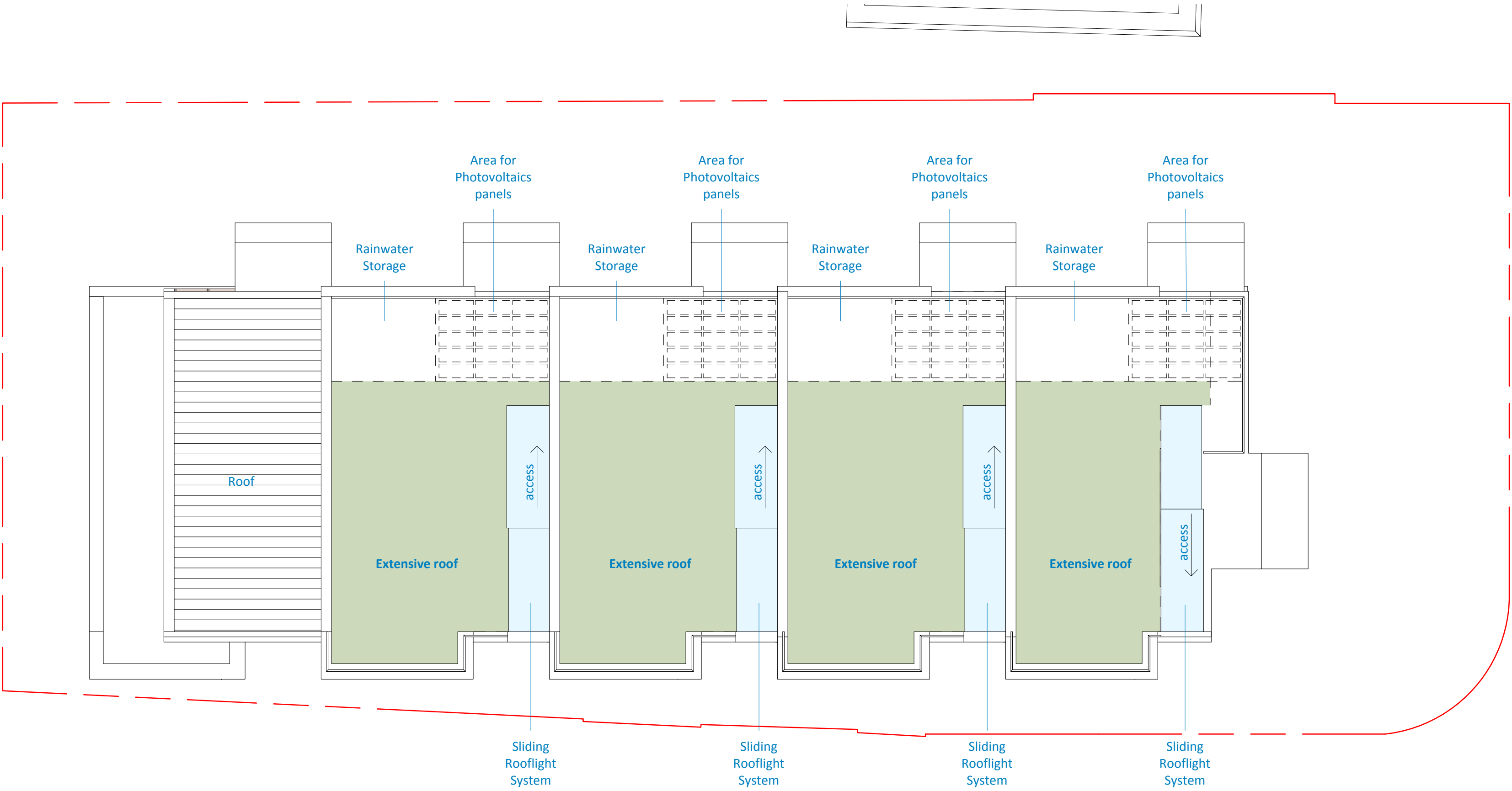
Scale: 1 : 100 @A1 /

@A3

ADL

ADL - 104 A

A



General notes:

This drawing is copyright of KSR architects. This drawing must be read in conjunction with the designers risk assessment, specification and all other relevant documentation and drawings. KSR architects accept no liability for any expense, loss or damage of whatsoever nature and however arising from any variation made to this drawing or in the execution of the work to which it relates which has not been referred to them and their approval obtained.
Do not scale from this drawing or the digital data, only figured dimensions are to be used. For Planning refer to linear scale.
Check all dimensions on site.

Notes/Legends

Bump

Key Plan

P2 Stage F coordination		09/13/10		Author		Checker	
Rev	Notes	dd mm yy	By	Chd	Date	Drawn By	Author

© KSR architects

KSR architects
14 Greenland Street
London
NW1 0ND

t: + 44 (0)20 7692 5000
f: + 44 (0)20 7692 5050
www.ksr-architects.com

KSR
architects

Project:
Elsworthy Rise NW3 3NL

Title:
ROOF PLAN

Project Ref

Drawing No

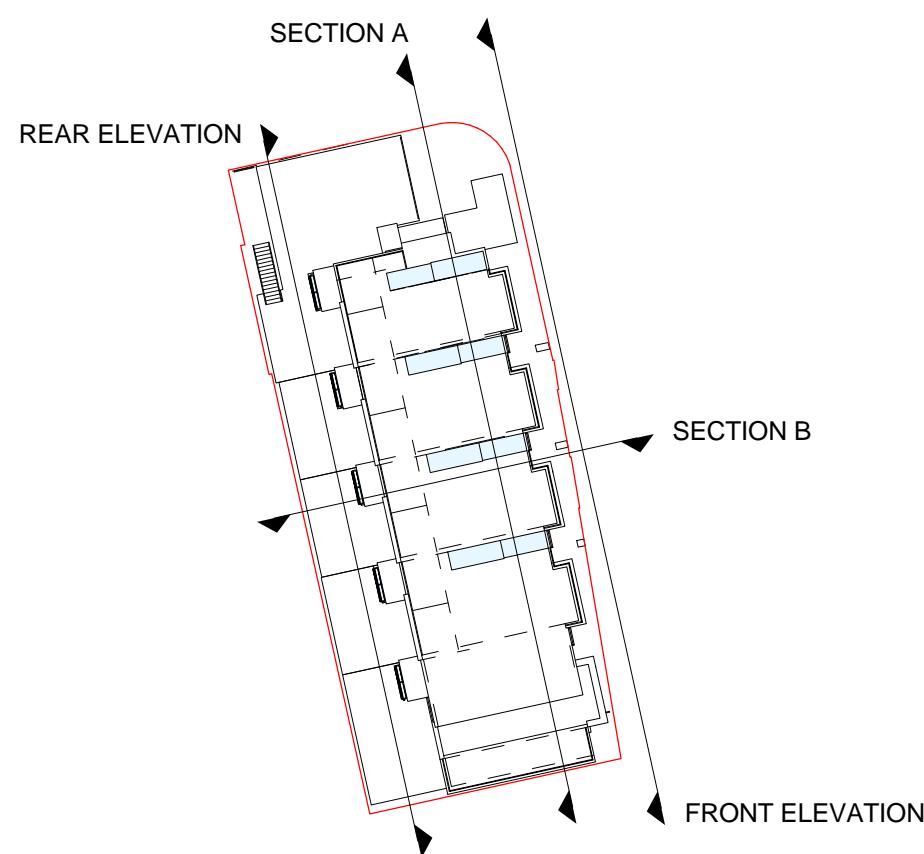
ADL

ADL - 105 A

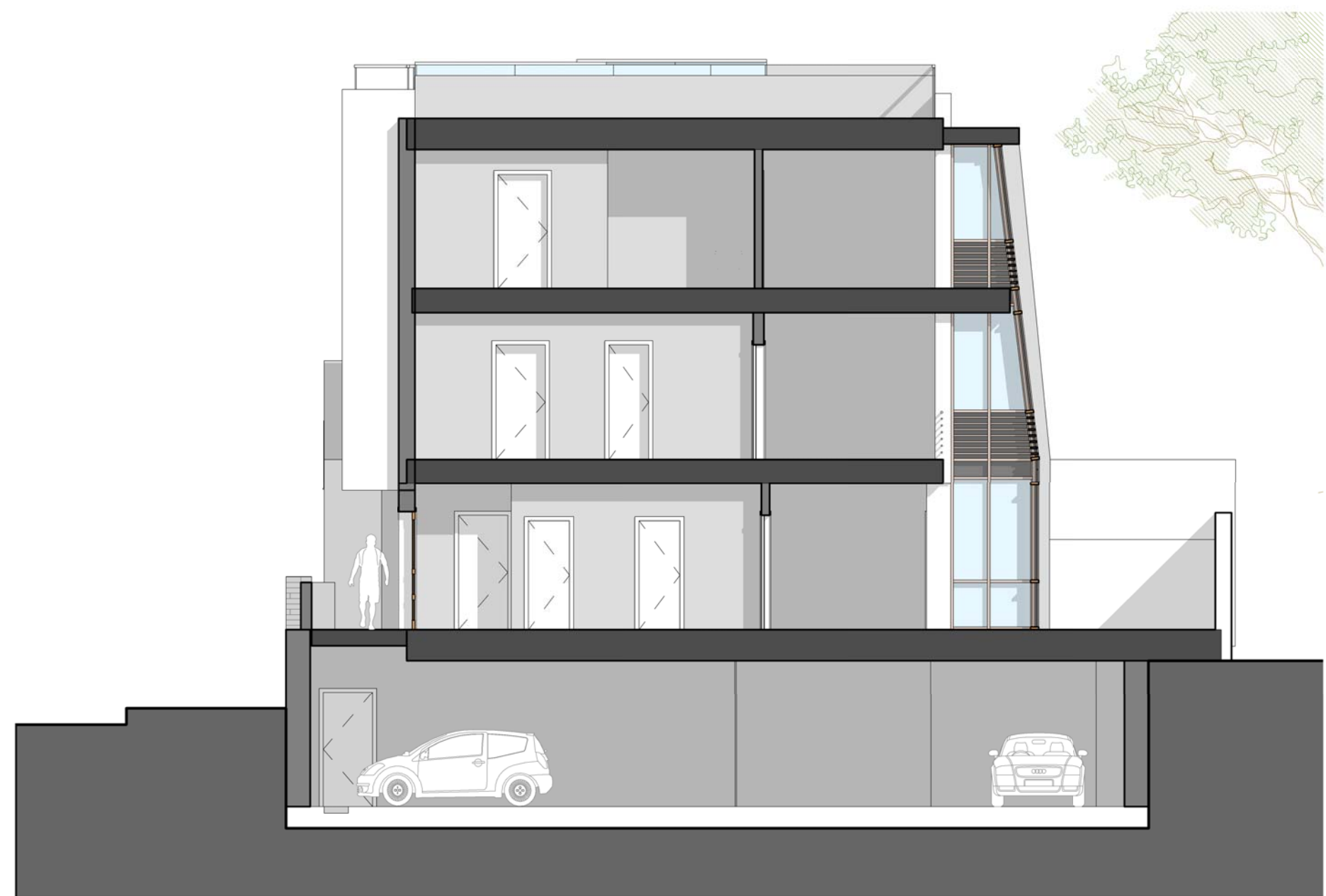
Revision

A

Scale: 1 : 100 @A1 / @A3



1 SECTION REFERENCES
1 : 500



2 SECTION B
1 : 100



3 SECTION A
1 : 100

General notes:

This drawing is copyright of KSR architects. This drawing must be read in conjunction with the designer's risk assessment, specification and all other relevant documentation and drawings. KSR architects accept no liability for any expense, loss or damage of whatsoever nature and however arising from any variation made to this drawing or in the execution of the work to which it relates which has not been referred to them and their approval obtained.
Do not scale from this drawing or the digital data, only figured dimensions are to be used. For Planning refer to linear scale.
Check all dimensions on site.

Notes/Legends

Bump

Key Plan

KSR architects
14 Greenland Street
London
NW1 0ND

t: + 44 (0)20 7692 5000
f: + 44 (0)20 7692 5050
www.ksr-architects.com

KSR
architects

Project:
Elsworthy Rise NW3 3NL

Title:
SECTIONS

P2 Stage F coordination 29/07/2010 Author Checker

Rev	Notes	dd mm yy	By	Chd	Date	Drawn By	Author	Checked	Checker
					29/07/2010				

Scale: AS indicated @A1 / @A3

© KSR architects

Project Ref	Drawing No	Revision
ADL	ADL - 201 A	A

- Openeable glazed rooflight
- Painted metal railing
- Brick wall to match existing
- Double glazed painted windows
- Render facade
- Painted metal railing
- Timber external doors
- Timber louvres
- Render planter boxes
- Brick base to match existing



- Painted metal railing
- Glazed extruded facade
- Painted aluminium framed
- Timber louvres
- Double glazed painted aluminium frame windows
- Render facade
- Brick to match existing
- Painted Aluminium framed



General notes:

This drawing is copyright of KSR architects. This drawing must be read in conjunction with the designer's risk assessment, specification and all other relevant documentation and drawings. KSR architects accept no liability for any expense, loss or damage of whatsoever nature and however arising from any variation made to this drawing or in the execution of the work to which it relates which has not been referred to them and their approval obtained.

Do not scale from this drawing or the digital data, only figured dimensions are to be used. For Planning refer to linear scale.

Check all dimensions on site.

Notes/Legends

Stamp

Key Plan

KSR architects
14 Greenland Street
London
NW1 0ND

t: + 44 (0)20 7692 5000
f: + 44 (0)20 7692 5050
www.ksr-architects.com

KSR
architects

Project:
Elsworthy Rise NW3 3NL

Title:
ELEVATIONS

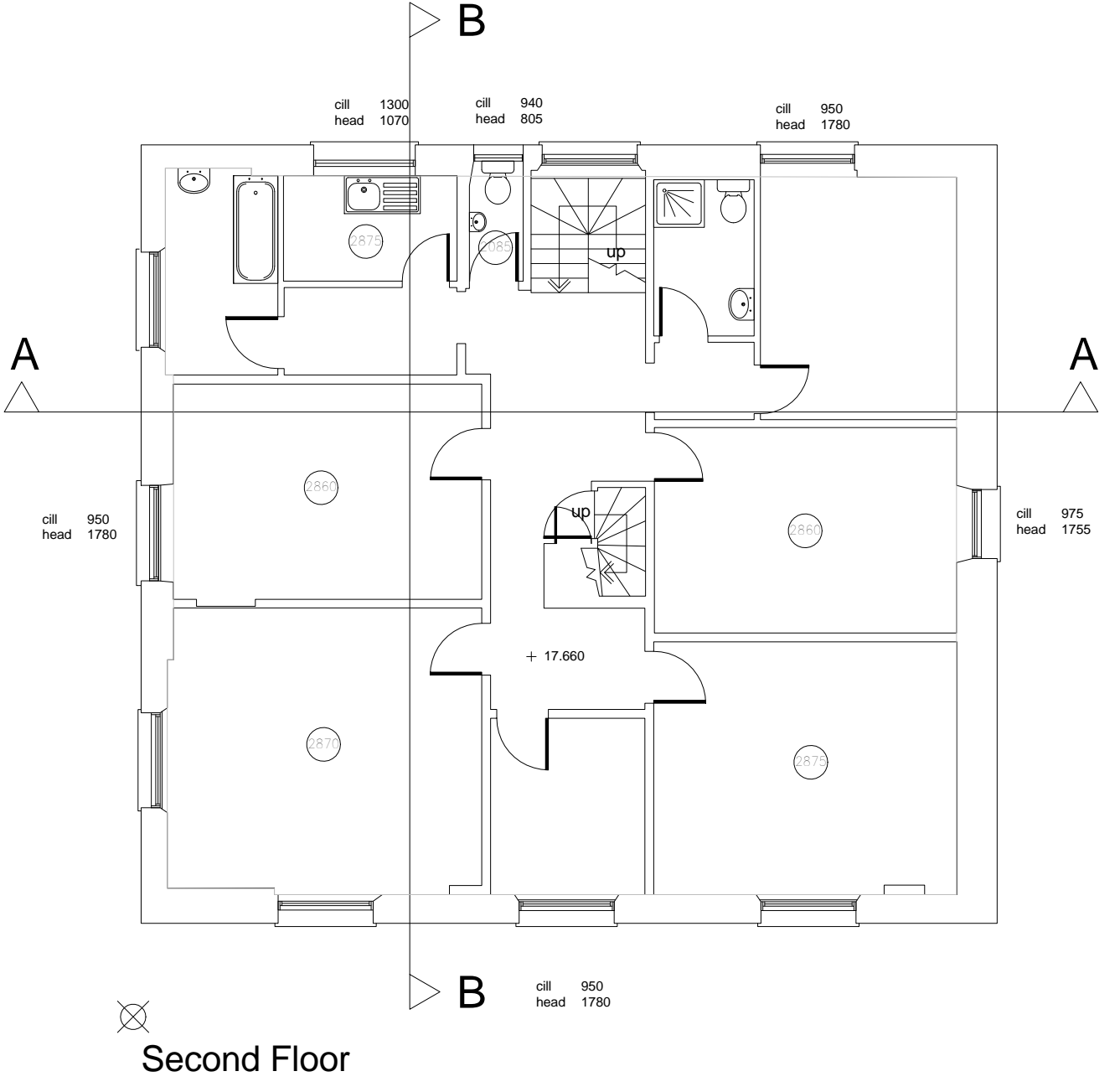
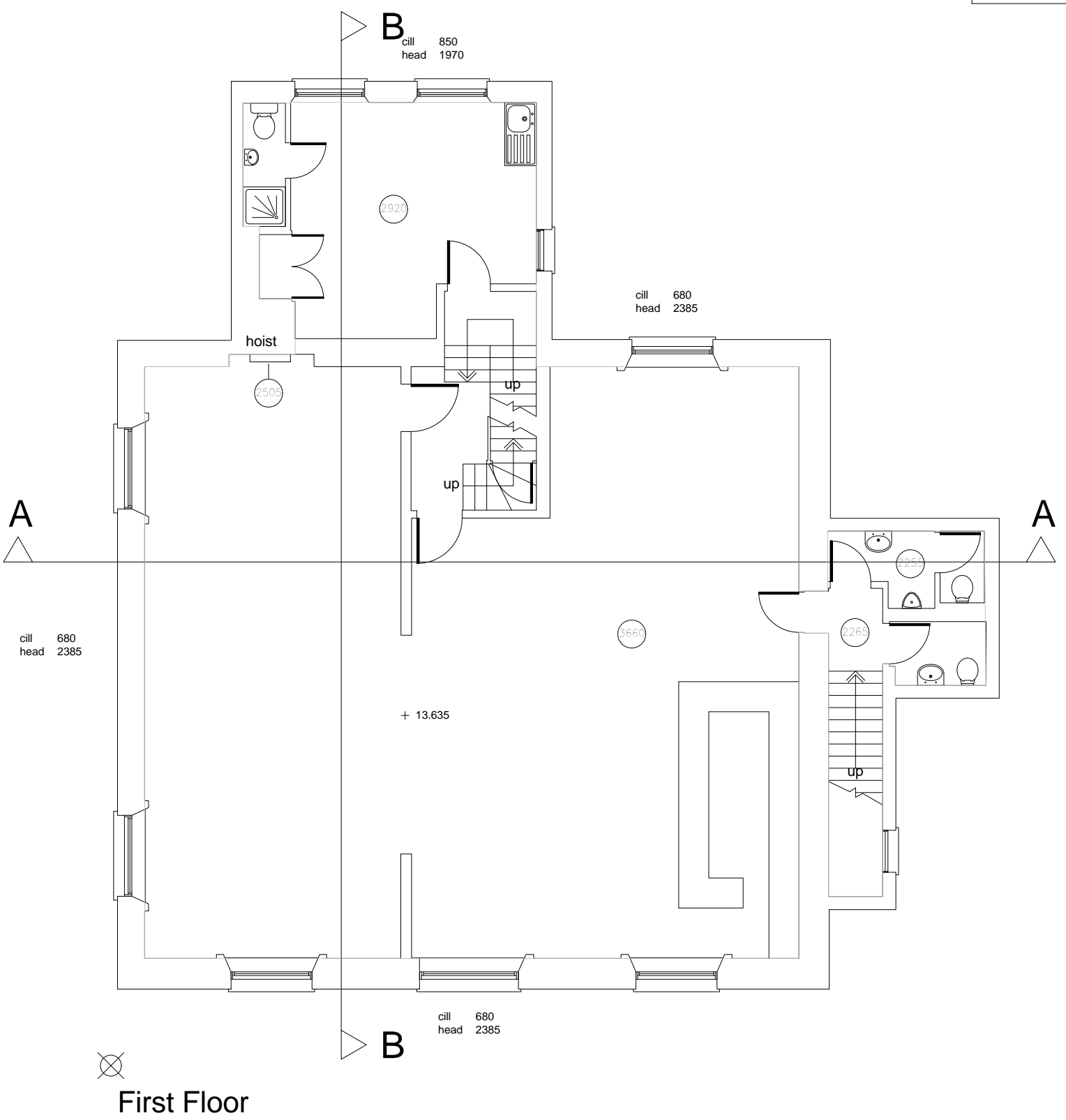
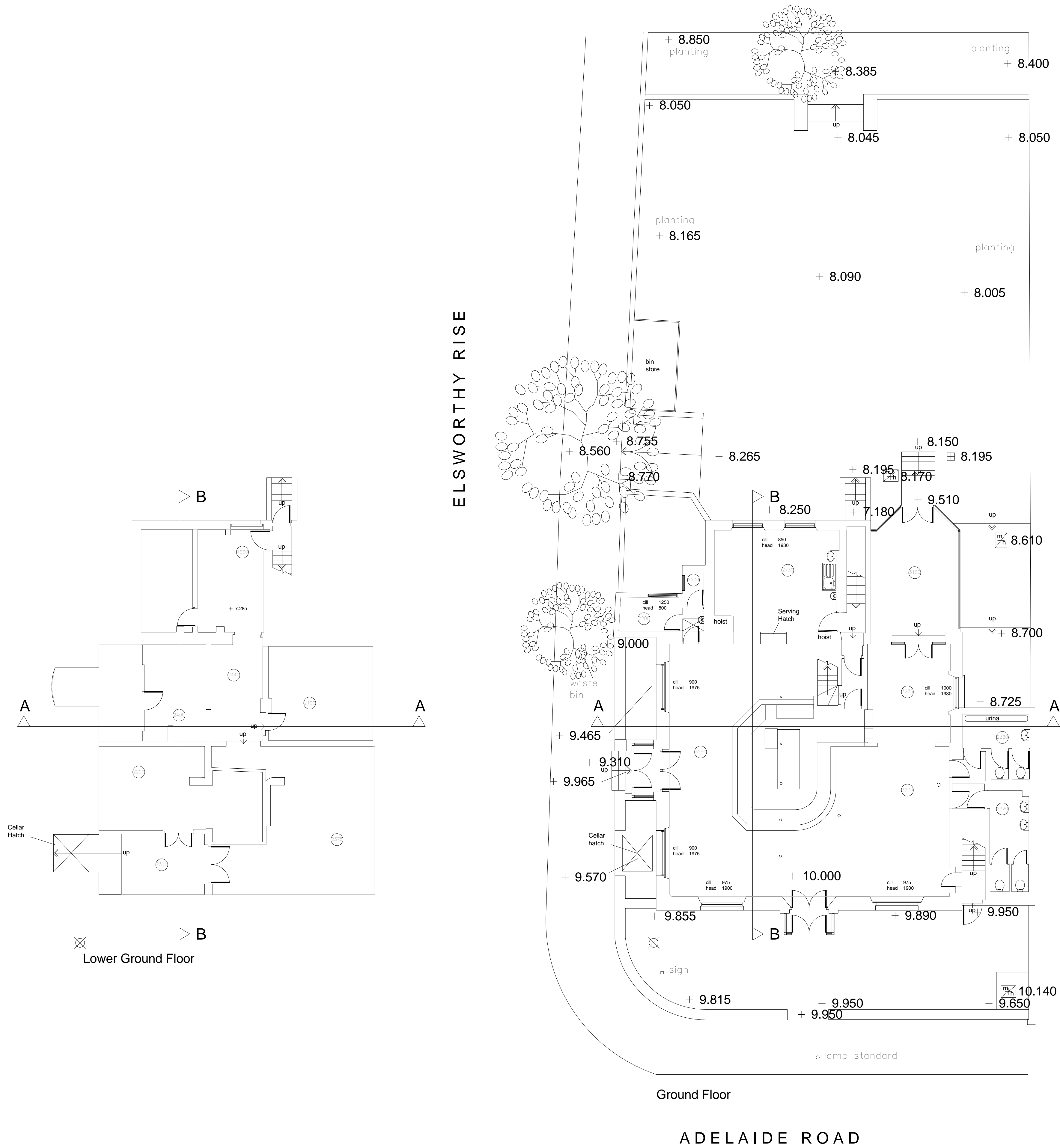
P2 Stage F coordination 29/07/2010 Author Checker

Rev Notes dtd mm yy By Chd Date 29/07/2010 Drawn By: Author Checked: Checked: Project Ref: Drawing No: Revision:

© KSR architects Scale: 1 : 100 @A1 / @A3

ADL ADL - 301 A A

THE COPYRIGHT © OF THIS DRAWING REMAINS THE PROPERTY OF ROSS LAIRD LIMITED UNTIL ALL DUE PAYMENTS HAVE BEEN MADE AT WHICH POINT COPYRIGHT IS AUTOMATICALLY TRANSFERRED TO THE CLIENT.



The Adelaide
143 Adelaide Road
London
NW3 3NL

Survey Drawing
Floor Plans

Date: October 2009
Scale: A1 @ 1:100

CAD Ref: 1687-01B

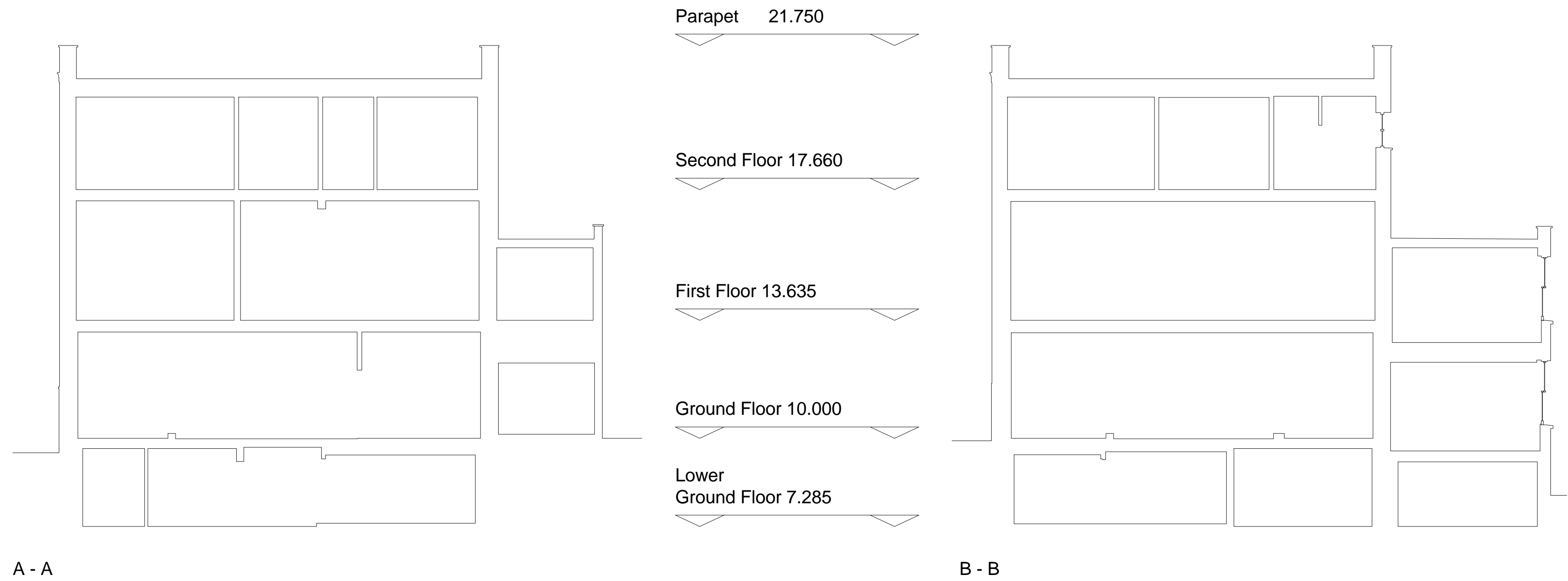
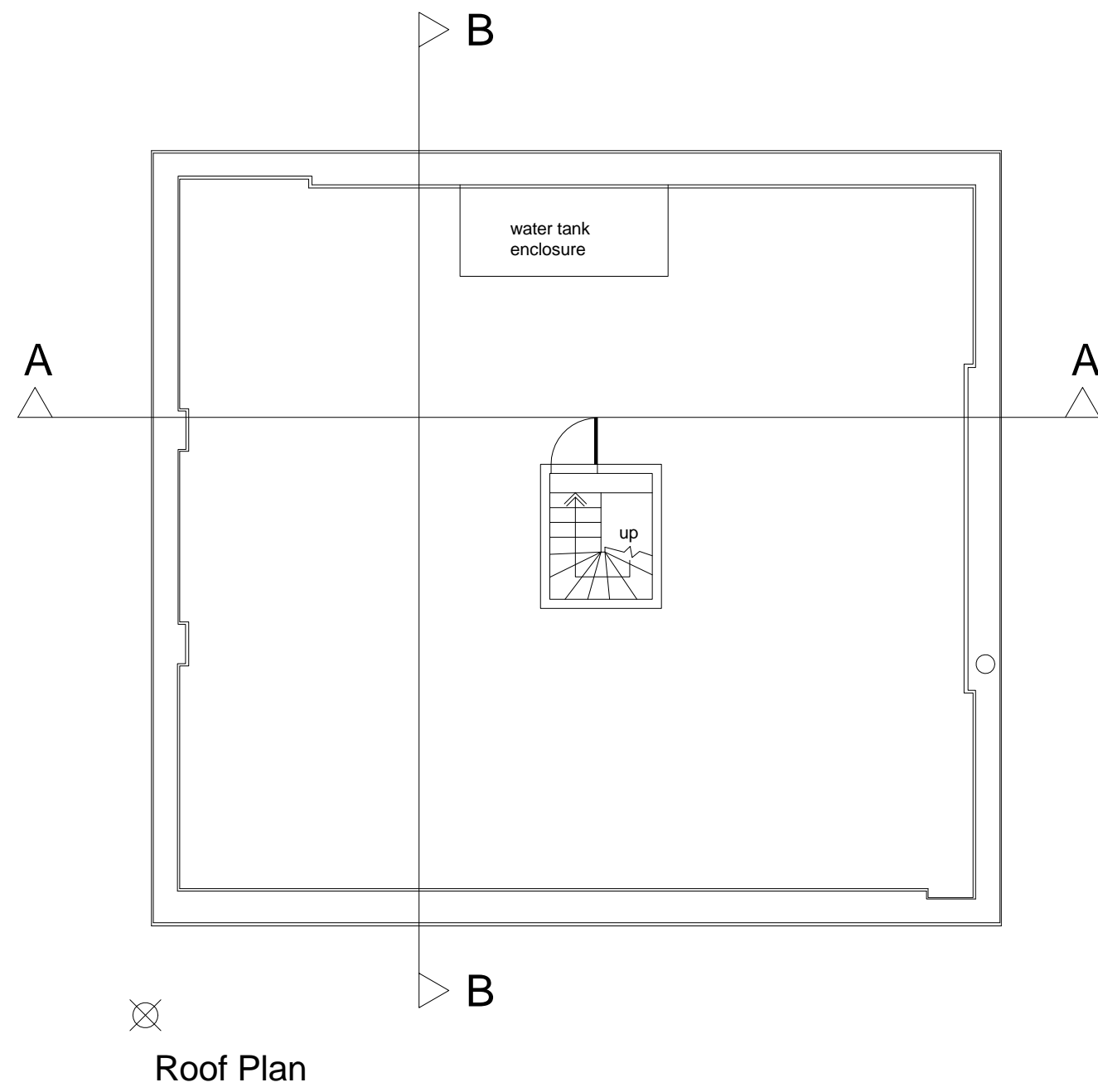
Ross Laird
Measured Surveys

Ross Laird
5 Lilford King
Street
Hertfordshire, SG8
5AL
Telephone: 01763
442912
Fax: 01763
442912
email: rosslaird@btinternet.com
www.rosslaird.co.uk

ALL DIMENSIONS TAKEN TO FACE
OF DRY LINING OR WALL CLADDING
IF APPLICABLE

ALTHOUGH EVERY ENDEAVOUR IS MADE TO PROVIDE AN
ACCURATE SURVEY DRAWING IT IS RECOMMENDED THAT
CRITICAL DIMENSIONS SHOULD BE CHECKED ON SITE.
INACCESSIBLE AREAS WILL BE SHOWN USING A BROKEN
LINE.

THE COPYRIGHT © OF THIS DRAWING REMAINS THE PROPERTY OF ROSS LAIRD LIMITED UNTIL ALL DUE PAYMENTS HAVE BEEN MADE AT WHICH POINT COPYRIGHT IS AUTOMATICALLY TRANSFERRED TO THE CLIENT.



The Adelaide
143 Adelaide Road
London
NW3 3NL

Survey Drawing
Roof Plan & Sections

Date: October 2009
Scale: A1 @ 1:100

CAD Ref: 1687-02B

Ross Laird
Measured Surveys

Ross Laird
5 Lilford King
Street
Hertfordshire, SG8
5AL
Telephone: 01763
449911
Fax: 01763
442912
email: rosslaird@btinternet.com
www.rosslaird.co.uk

ALL DIMENSIONS TAKEN TO FACE
OF DRY LINING OR WALL CLADDING
IF APPLICABLE

ALTHOUGH EVERY ENDEAVOUR IS MADE TO PROVIDE AN
ACCURATE SURVEY DRAWING IT IS RECOMMENDED THAT
CRITICAL DIMENSIONS SHOULD BE CHECKED ON SITE.
INACCESSIBLE AREAS WILL BE SHOWN USING A BROKEN
LINE.

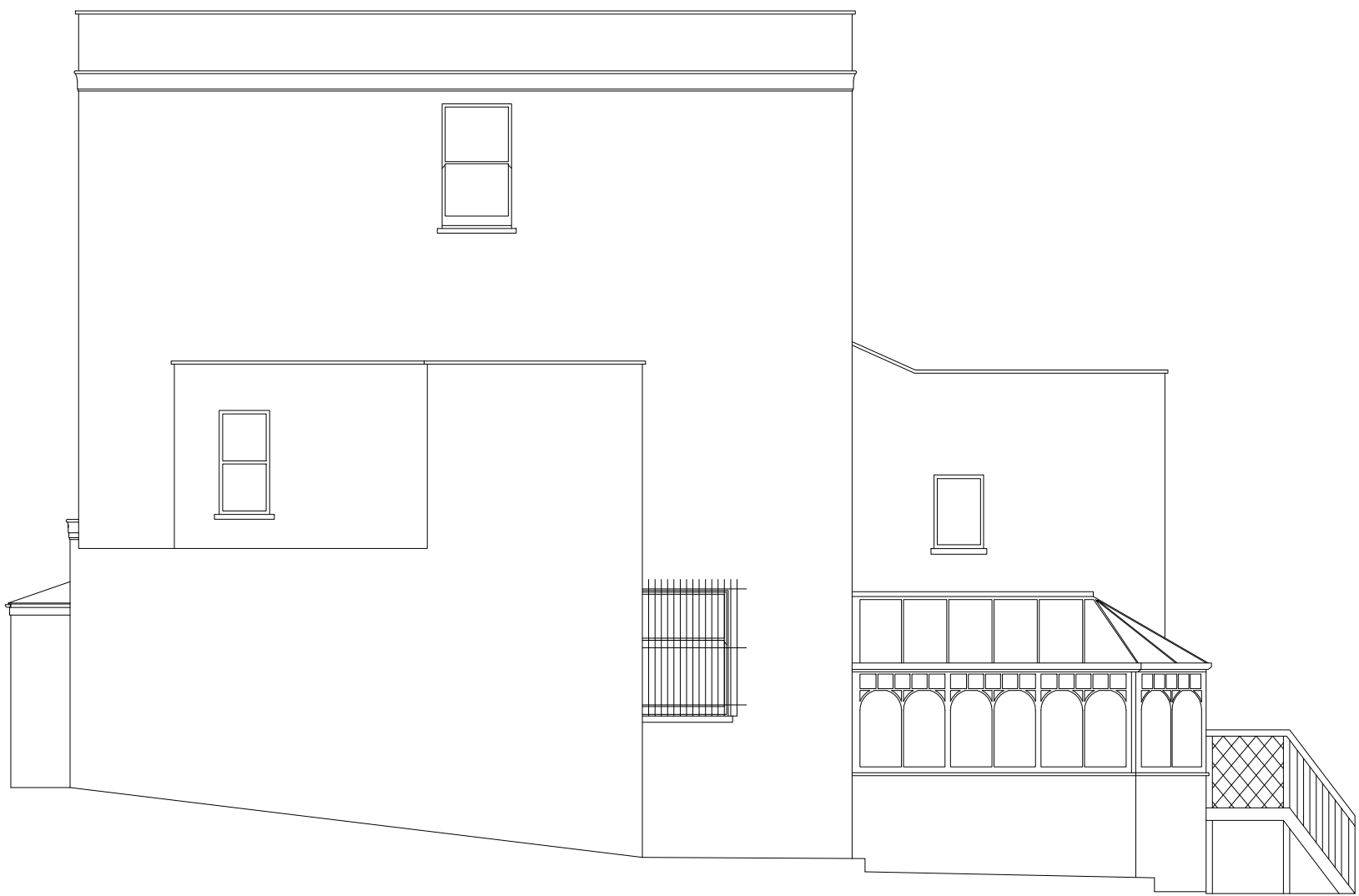
THE COPYRIGHT © OF THIS DRAWING REMAINS THE PROPERTY OF ROSS LAIRD LIMITED UNTIL ALL DUE PAYMENTS HAVE BEEN MADE AT WHICH POINT COPYRIGHT IS AUTOMATICALLY TRANSFERRED TO THE CLIENT.



Elsworthy Rise Elevation



Adelaide Road Elevation



Side Elevation



Rear Elevation

The Adelaide
143 Adelaide Road
London
NW3 3NL

Survey Drawing
Elevations

Date: October 2009
Scale: A1 @ 1:100

CAD Ref: 1687-03B

Ross Laird
Measured Surveys

Ross Laird
5 Lilwell King
Street
Hertfordshire, SG8
5AL
Telephone: 01763
249911
Fax: 01763
242912
email: rosslaird@btinternet.com
www.rosslaird.co.uk

ALL DIMENSIONS TAKEN TO FACE
OF DRY LINING OR WALL CLADDING
IF APPLICABLE

ALTHOUGH EVERY ENDEAVOUR IS MADE TO PROVIDE AN
ACCURATE SURVEY DRAWING IT IS RECOMMENDED THAT
CRITICAL DIMENSIONS SHOULD BE CHECKED ON SITE.
INACCESSIBLE AREAS WILL BE SHOWN USING A BROKEN
LINE.



Elevation 1



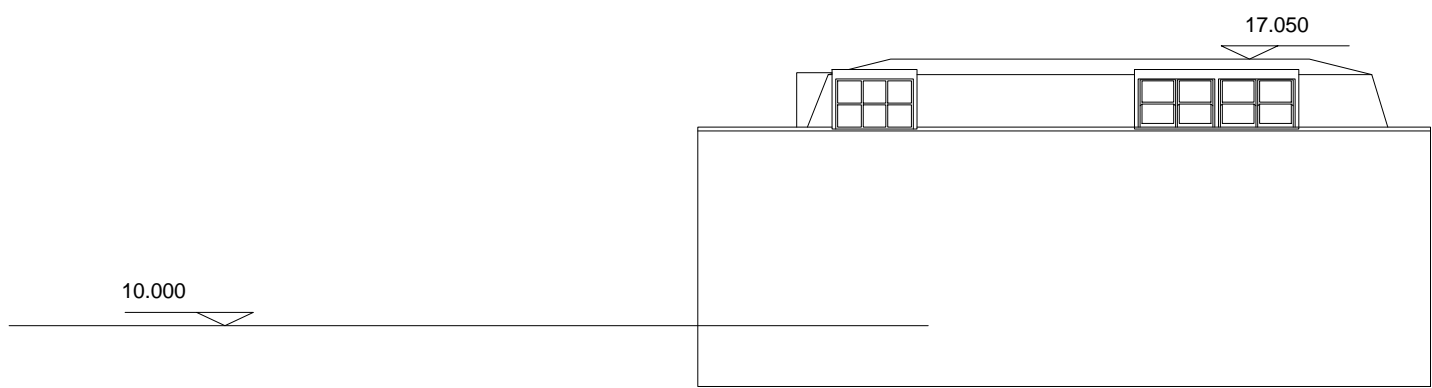
Elevation 2



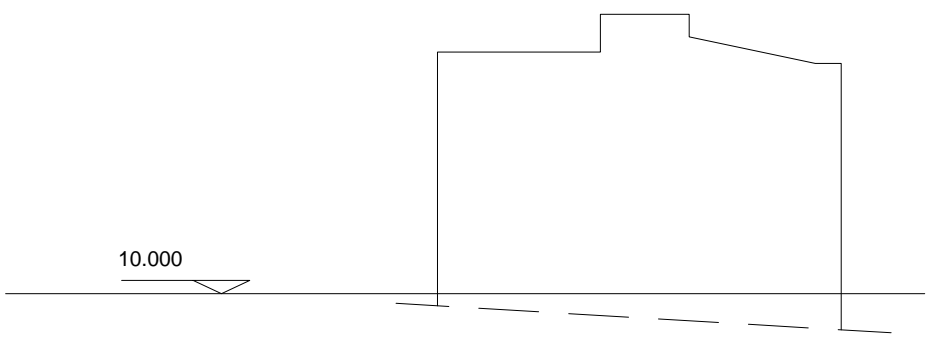
Elevation 3



Elevation 4



Elevation 5



Elevation 6

KSR Architects

The Adelaide
143 Adelaide Road
London
NW3 3NL

Survey Drawing
Elevations

Date: March 2010
Scale: A1 @ 1:200

CAD Ref: 1736-02

Ross Laird
Measured Surveys

Ross Laird
5 Lilwell King
Street
Hertfordshire, SG8
5AL
Telephone: 01763
249919
Fax: 01763
242912
email: rosslaird@btinternet.com
www.rosslaird.co.uk