

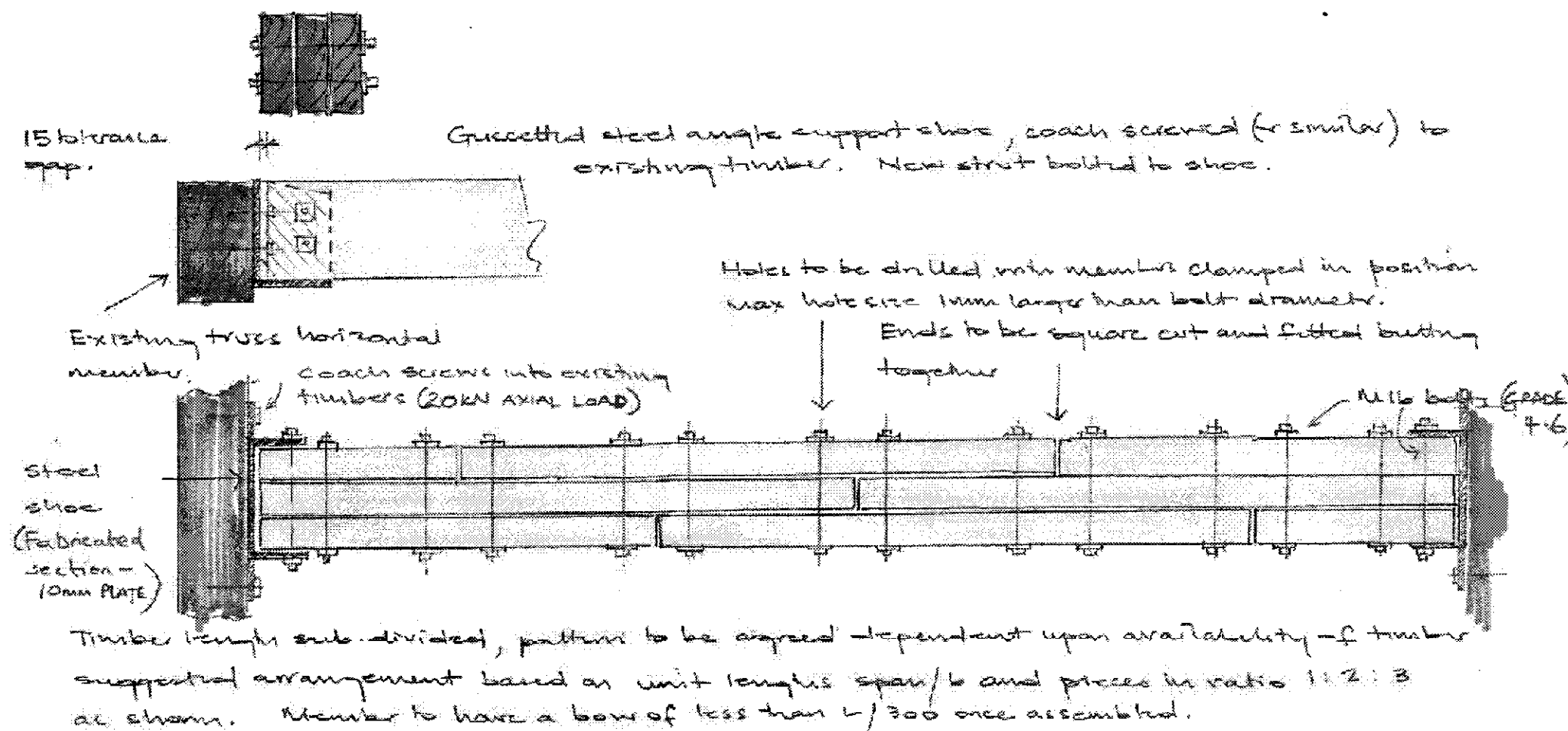
## NEW TIMBER STRUTS (BEAM X)

Lengths of timber to be determined from site survey.

NOTE: FOR TIMBER TO MASONRY CHIMNEY CONNECTION, DETAIL TO BE SIMILAR TO BELOW BUT USING APPROPRIATE FIXINGS (i.e. HILTI HIT ANCHORS)

### TIMBER STRUTS

2 no. C24 planed timbers 97 x 295 bolted together to form 291 x 295 square section. Timbers treated for external condition & then enclosed in weather protection.



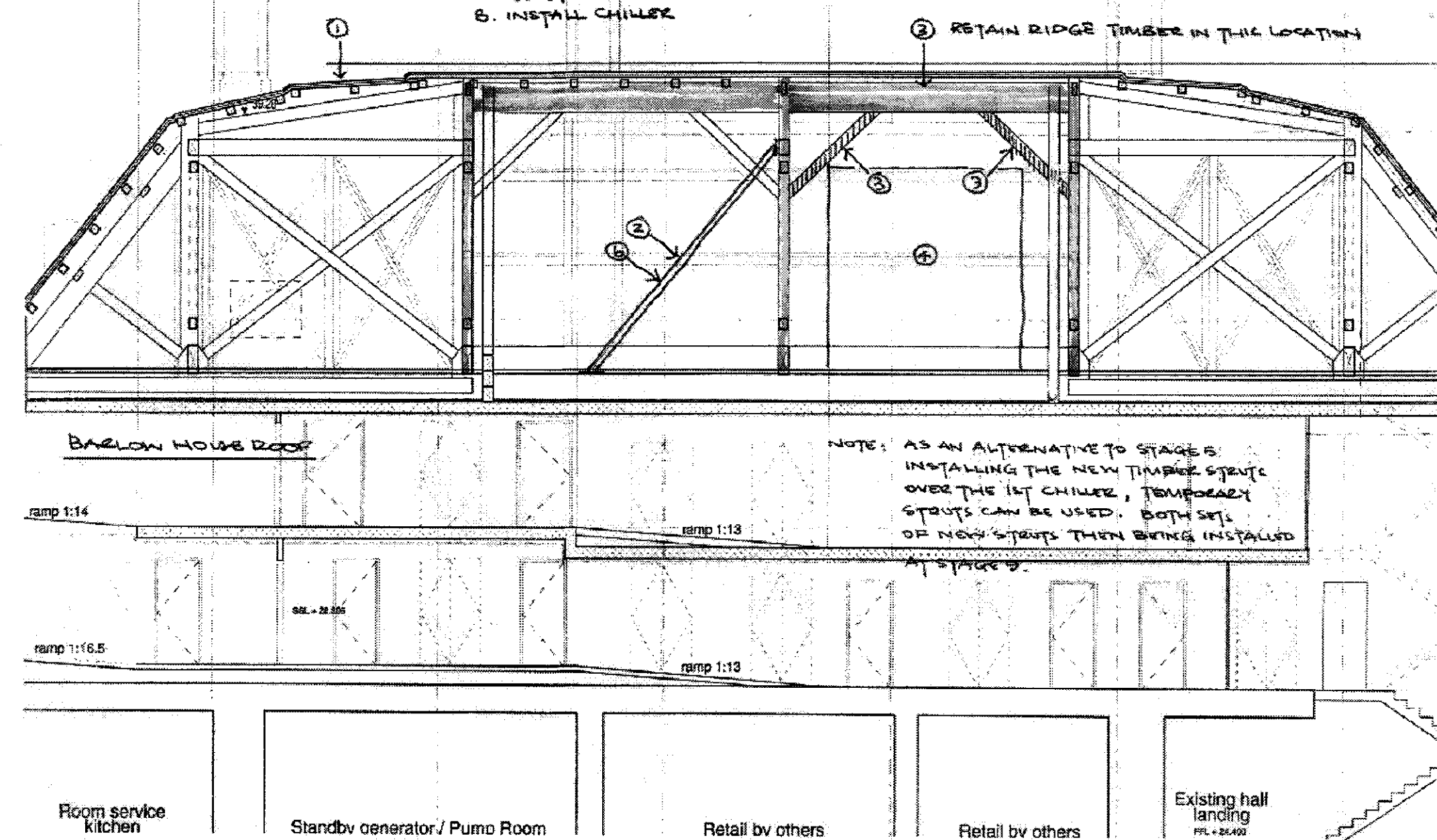
(Min end distances to meet requirements of BS5268, similarly bolt spacings & edge distances)

Note: Timbers as shown for beam X can be substituted for glulam section of equivalent dimensions

Detail 1: New Timber Struts - Beam X

### CONSTRUCTION SEQUENCE

1. REMOVE ROOF COVERINGS
2. INSTALL TEMPORARY RAILING SHORE TO STABILISE CENTRAL TIMBER TRUSS AT CENTRAL POST AND EASTERN POST. BUILD OFF NEW PLANT FLAG
3. REMOVE ROOF TIMBERS OVER 1ST CHILLER POSITION
4. INSTALL 1ST CHILLER
5. INSTALL NEW TIMBER STRUTS OVER 1ST CHILLER
6. REMOVE INCLINED TEMPORARY SHORE
7. REMOVE ROOF TIMBERS OVER SECOND CHILLER AS 3.
8. INSTALL CHILLER
9. INSTALL NEW TIMBER STRUTS OVER 2ND CHILLER
10. INSTALL ROOF PURLINS AND CLADDING TO WHOLE ROOF.



Construction Sequence

### General Notes:

1. Drawings are not to be scaled (images have been scanned).
2. For typical Connection Details refer to Drg No, 18000/S\_1145.
3. Connection design forces shown thus: (\_\_\_kN), acting downwards. All forces are factored. Where such connection forces are only shown at one end of the beam it should be assumed the force is the same at both ends.
4. Concrete grade to instill beams and slabs (not on steel decking) to be RC40, refer to Arup concrete specification details. Nominal cover to all reinforcement to be 30mm, to BS8500.
5. Concrete grade to instill slabs on permanent metal decking to be RC30, refer to Arup concrete specification for details. Nominal Cover to be 30mm.
6. For Temporary Works proposals refer to Drg No, 111800/S\_1147 & S\_1743.
7. Concrete upstand to all levels at front of lift to be provided. Refer to Drg No, 118000/S\_1146 Detail 'F'.
8. Locations of Existing W.L. Beams to be confirmed to Engineer prior to demolition.
9. Any discrepancies between Architect's & Engineer's Drawings to be highlighted to both parties.
10. All general dimensional information & setting out to be referred to Architect's Drawings.
11. Lifting beams & secondary lift steelwork to be Contractor designed.
12. Proposed method statement & construction sequence to be agreed with Engineer.

C1	06/08/07	JB	JB	BJ
Issued For Construction				
Issue	Date	By	Chkd	Appd

# ARUP

13 Fitzroy Street  
London W1T 4BG  
Tel +44 (0)20 7636 1531 Fax +44 (0)20 7580 3924  
www.arup.com

Client

Manhattan Lofts  
Corporation Limited

Job Title

St. Pancras Chambers

Drawing Title

Barlow House  
Roof Timber Alterations  
Details and Construction Sequence

Scale at A1

Plot ID DCAFCDS4-ED1E-46C5-9E78-0D91B09B04C

Drawing Status

Construction

Job No	Drawing No	Issue
118000	S_6325	C1