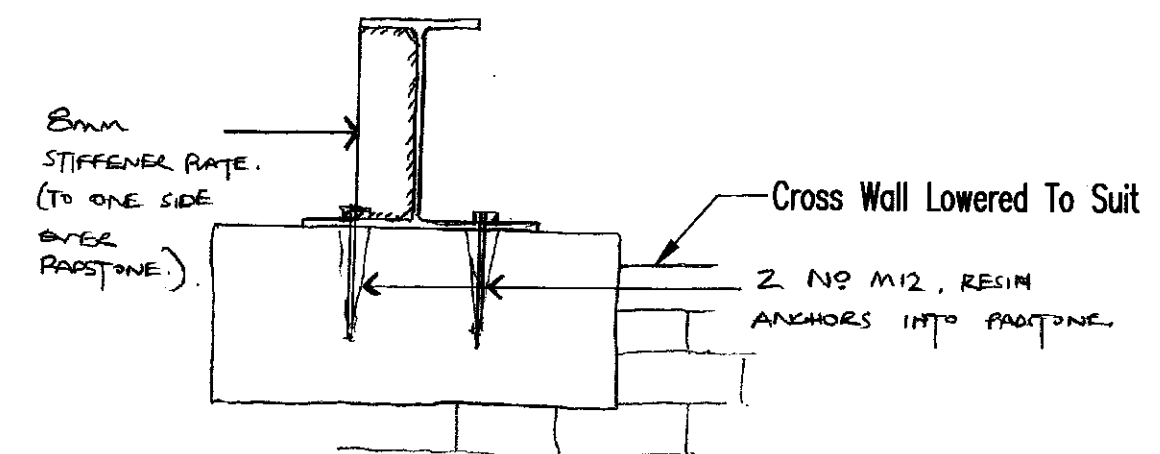
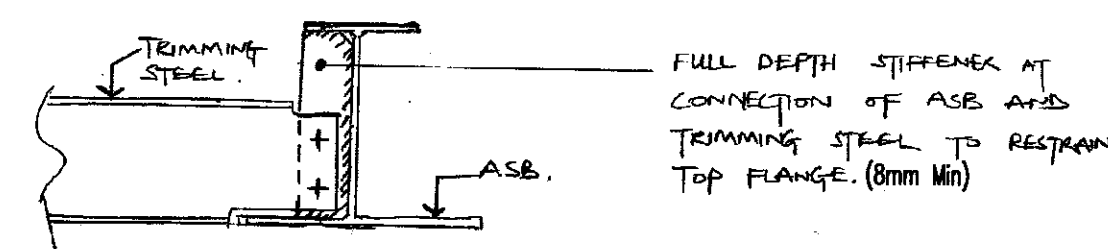


SECTION C-C
UPSTAND DETAIL

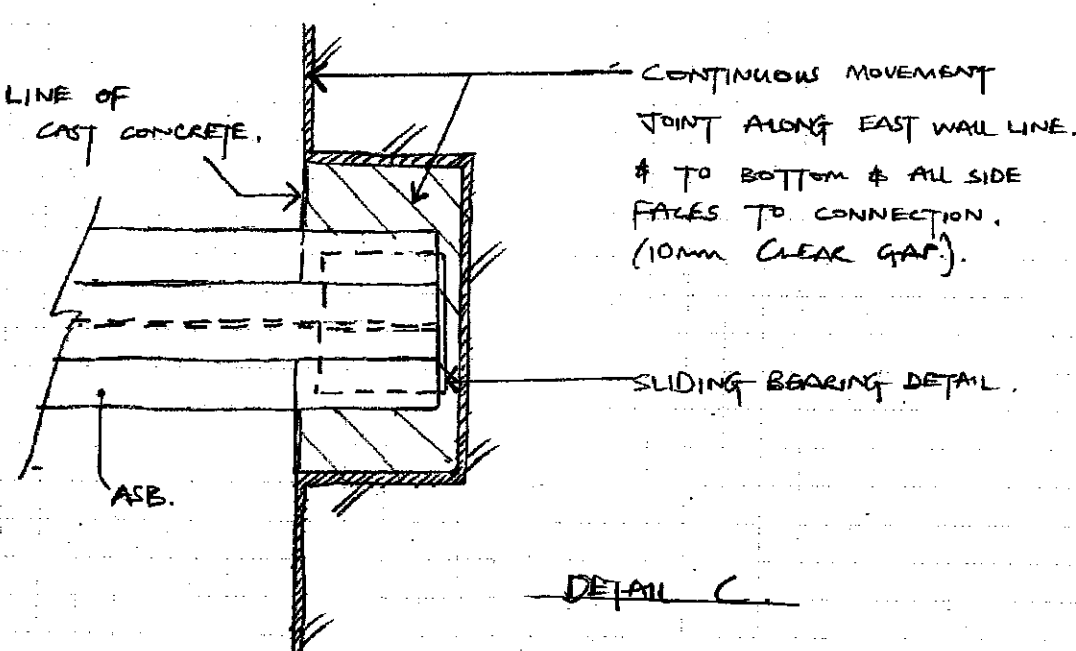
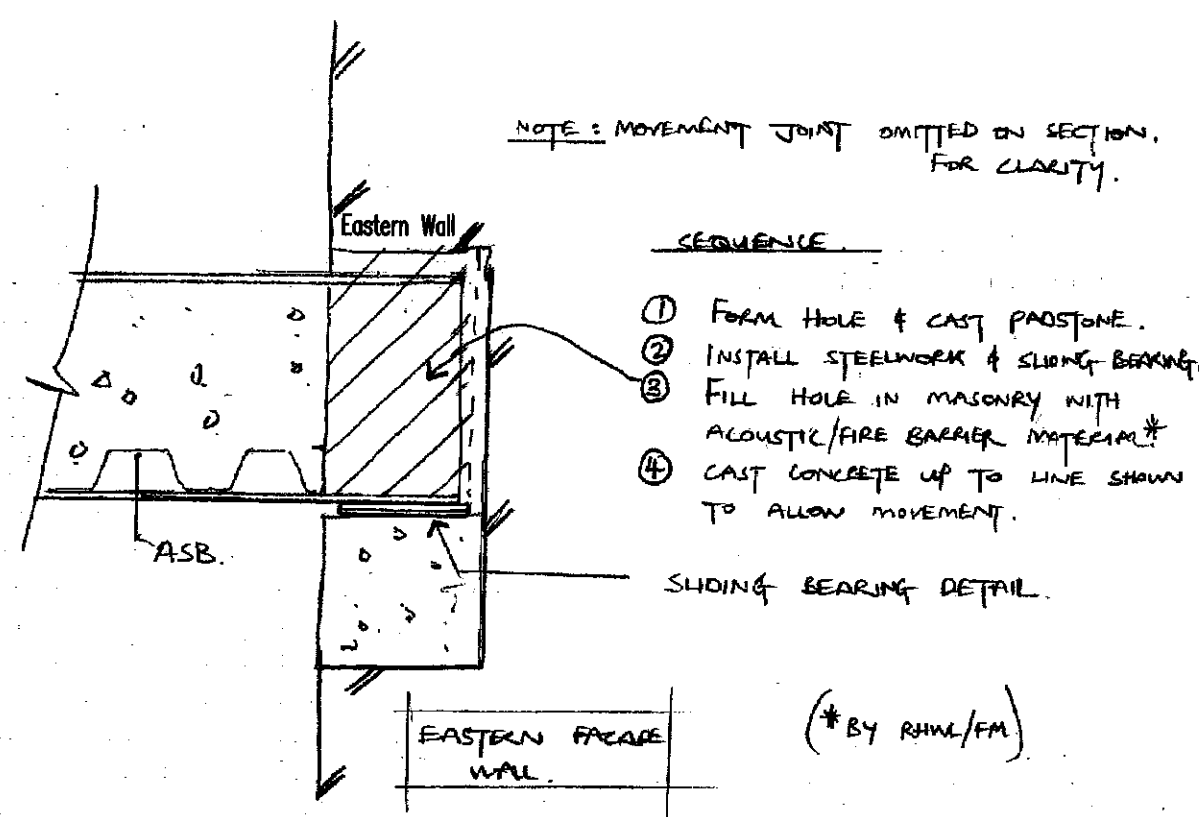
Section C-C
Refer To S_6002 Level Two Plan - Typical Detail



Detail D - Cross Wall Connections
Refer To S_6002 Level Two Plan

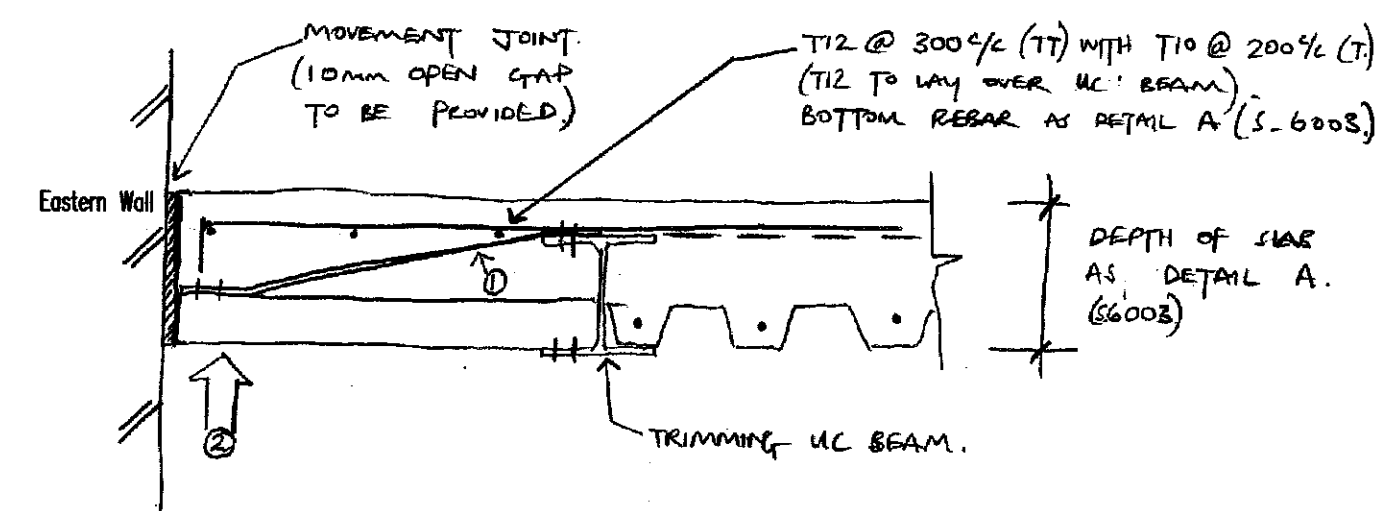


Detail E - Trimmers To ASB Connections
Refer To S_6002 Level Two Plan



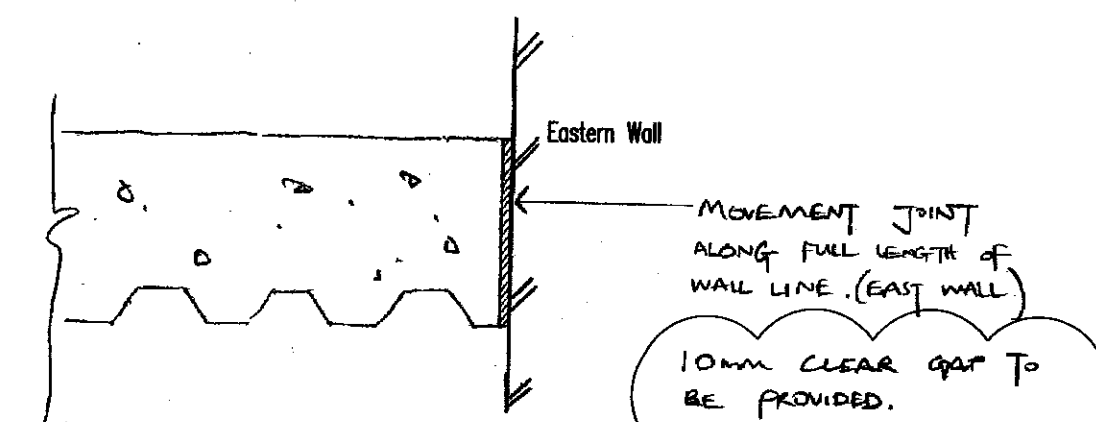
Detail C1 - End Connection Along Station Facade
Refer To S_6002 Level Two Plan

C2: Sequence and Gap Size Added (Detail C1 and C2)



Section D-D
Refer To S_6002 Level Two Plan - Typical Detail

C2: New Detail Added To Deal With Movement Joint



Detail C2 - Edge Detail Along Station Facade
Refer To S_6002 Level Two Plan

General Notes:

- Drawings are not to be scaled (images have been scanned).
- For typical Connection Details refer to Drg No, 18000/S_1145.
- Connection design forces shown thus: (---kN), acting downwards. All forces are factored. Where such connection forces are only shown at one end of the beam it should be assumed the force is the same at both ends.
- Concrete grade to instu beams and slabs (not on steel decking) to be RC40, refer to Arup concrete specification details. Nominal cover to all reinforcement to be 30mm, to BS8500.
- Concrete grade to instu slabs on permanent metal decking to be RC30, refer to Arup concrete specification for details. Nominal Cover to be 30mm.
- For Temporary Works proposals refer to Drg No, 111800/S_1147 & S_1743.
- Concrete upstand to all levels at front of lift to be provided. Refer to Drg No, 118000/S_1146 Detail 'F'.
- Locations of Existing W.L. Beams to be confirmed to Engineer prior to demolition.
- Any discrepancies between Architect's & Engineer's Drawings to be highlighted to both parties.
- All general dimensional information & setting out to be referred to Architect's Drawings.
- Lifting beams & secondary lift steelwork to be Contractor designed.
- Proposed method statement & construction sequence to be agreed with Engineer.

C2	24/01/08	JL	JB	BJ
Issued For Construction				
C1	08/06/07	JL	JB	BJ
Issued for construction				
Issue	Date	By	Chkd	Appd

ARUP

13 Fitzroy Street
London W1T 4BQ
Tel +44 (0)20 7636 1531 Fax +44 (0)20 7580 3924
www.arup.com

Client
Manhattan Lofts
Corporation Limited

Job Title
St. Pancras Chambers

Drawing Title
Barlow House
Level Two Plant Slab
Sections and Details
Sheet 2

Scale at A1	Plot ID	33141CF3-74F9-41BC-BC87-73DE3BC87985
Drawing Status	For Construction	
Job No	Drawing No	Issue
118000	S_6004	C2