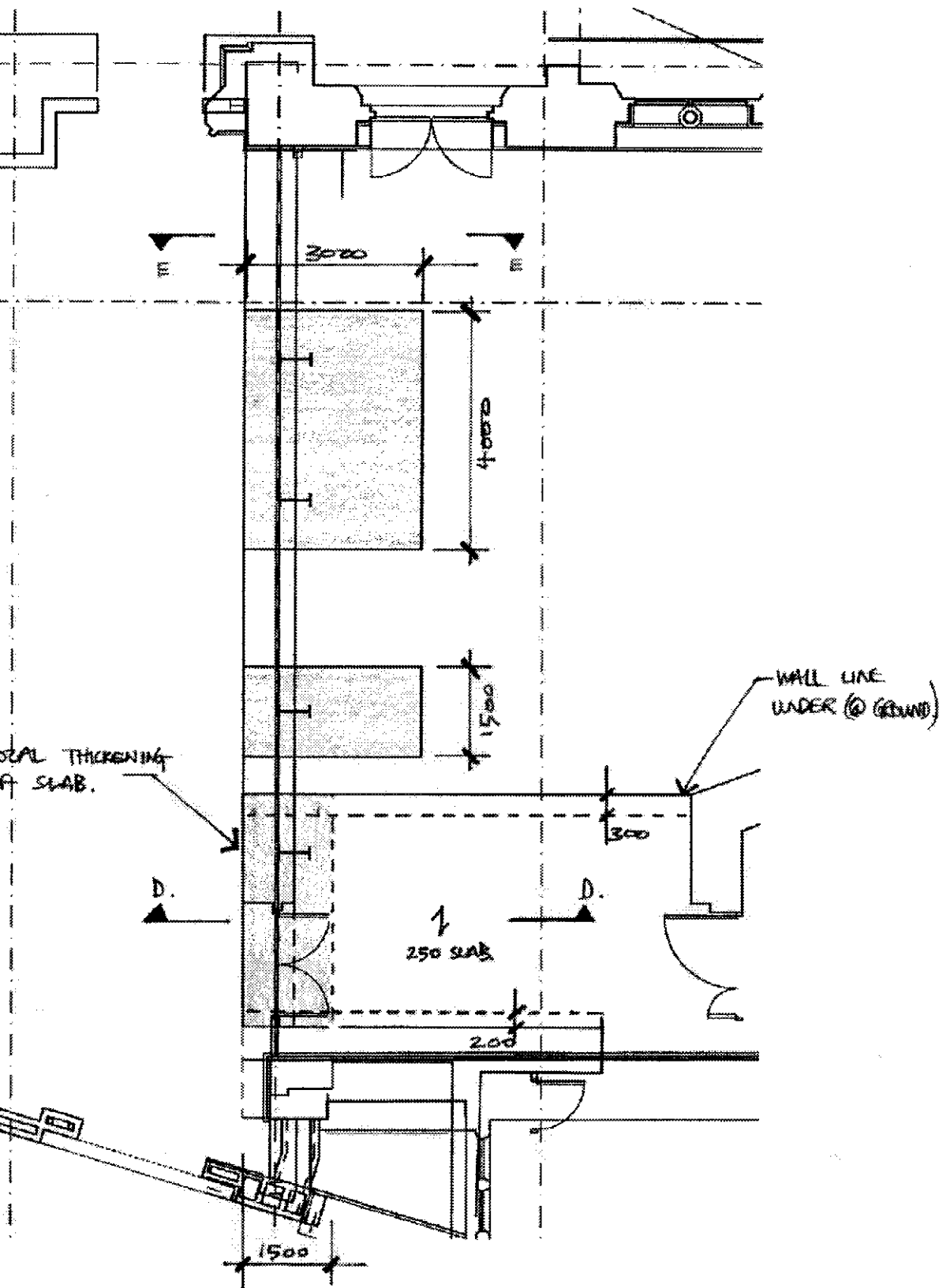
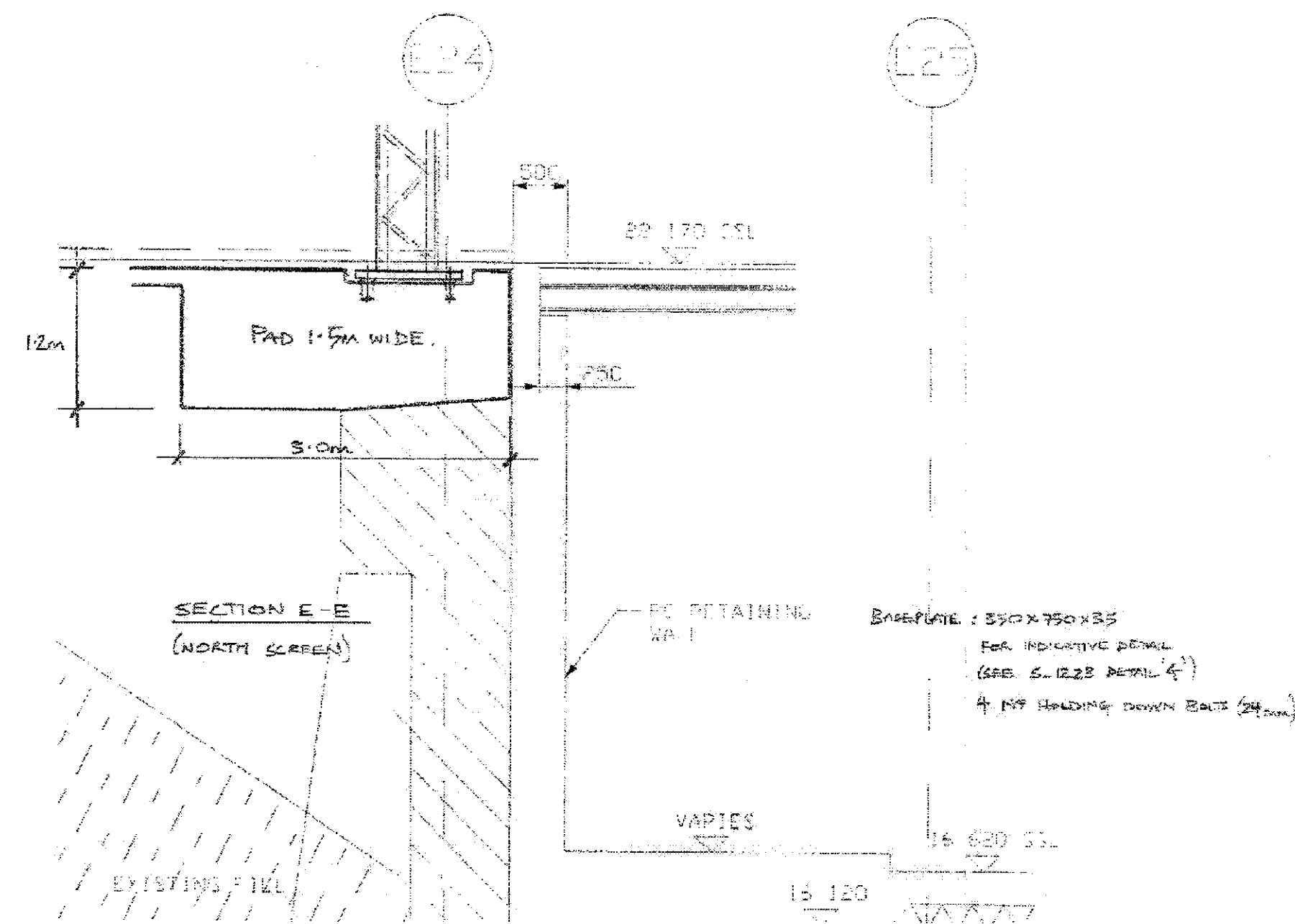


A1



North Screen - Plan and Section D-D

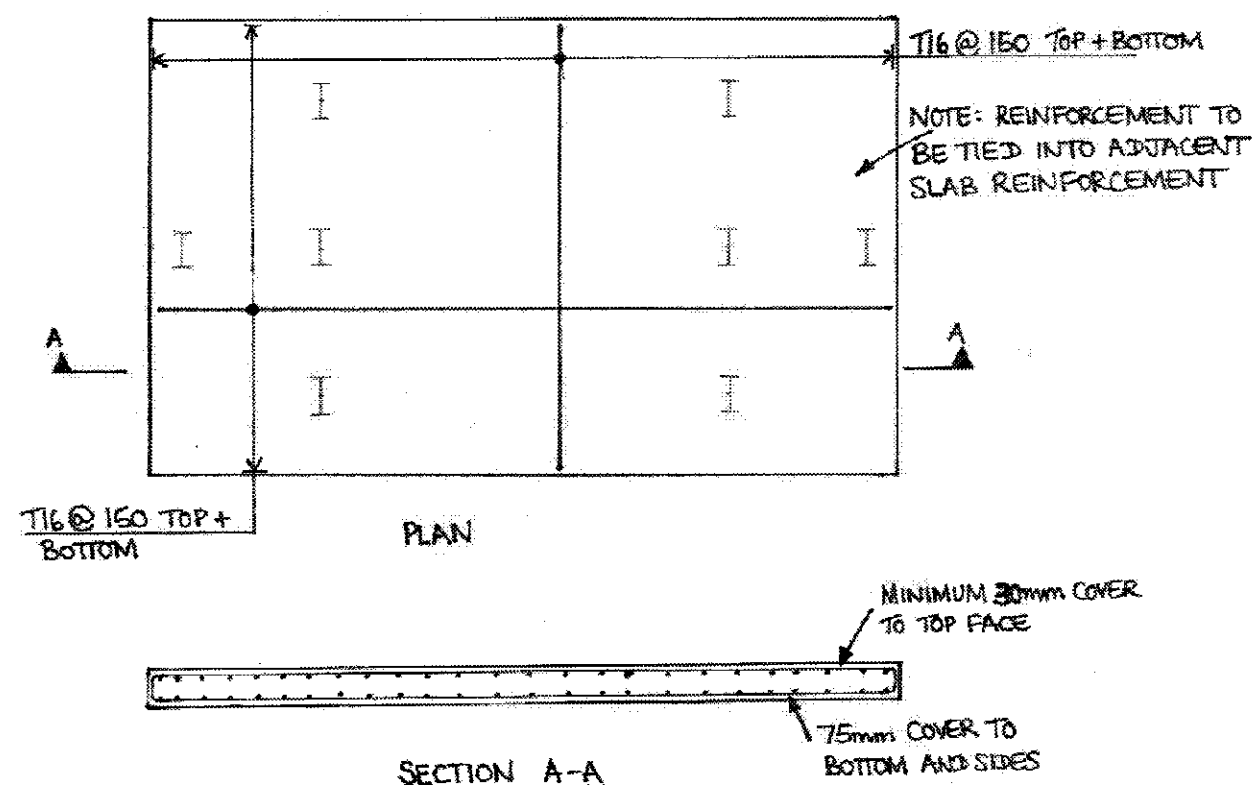


North Screen - Section E-E

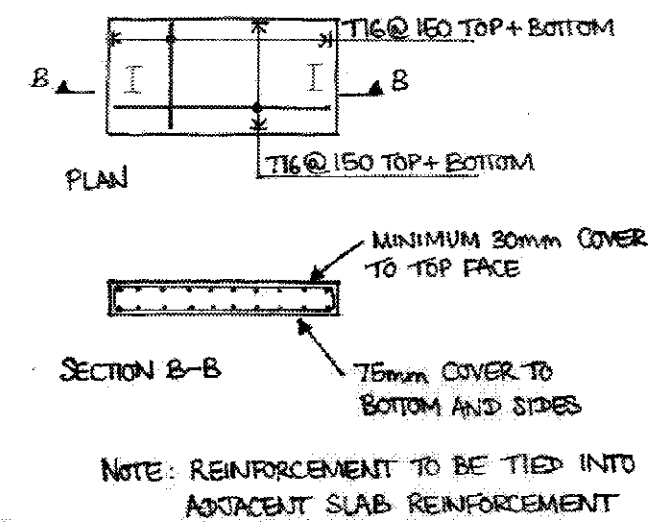
## General Notes:

1. Drawings are not to be scaled (images have been scanned).
2. For typical Connection Details refer to Drg No, 18000/S\_1145.
3. Connection design forces shown thus : (---kN), acting downwards. All forces are factored. Where such connection forces are only shown at one end of the beam it should be assumed the force is the same at both ends.
4. Concrete grade to in situ beams and slabs (not on steel decking) to be RC40, refer to Arup concrete specification details. Nominal cover to all reinforcement to be 30mm, to BS8500.
5. Concrete grade to in situ slabs on permanent metal decking to be RC30, refer to Arup concrete specification for details. Nominal Cover to be 30mm.
6. For Temporary Works proposals refer to Drg No, 111800/S\_1147 & S\_1143.
7. Concrete upstand to all levels at front of lift to be provided. Refer to Drg No, 118000/S\_1146 Detail 'F'.
8. Locations of Existing W.I. Beams to be confirmed to Engineer prior to demolition.
9. Any discrepancies between Architect's & Engineer's Drawings to be highlighted to both parties.
10. All general dimensional information & setting out to be referred to Architect's Drawings.
11. Lifting beams & secondary lift steelwork to be Contractor designed.
12. Proposed method statement & construction sequence to be agreed with Engineer.

NORTH GLAZED SCREEN.



South Screen



C3	19/05/09	AS	JB	BJ
Issued For Construction				
C2	18/06/07	JL	JB	BJ
Issued For Construction				
C1	05/03/07	JL	JB	BJ
Issued for construction				
Issue	Date	By	Chkd	Appd

ARUP

13 Fitzroy Street  
London W1T 4BQ  
Tel +44 (0)20 7636 1531 Fax +44 (0)20 7580 3924  
www.arup.com

Client

Manhattan Lofts  
Corporation Limited

Job Title

St. Pancras Chambers

Drawing Title

Platform Level  
Glazed Screen Bases  
Sheet 2

Scale at A1

Plot ID EEB97014-DB7D-4F74-A161-2F891AD57A53

Drawing Status

Construction

Job No	Drawing No	Issue
118000	S_4013	C3