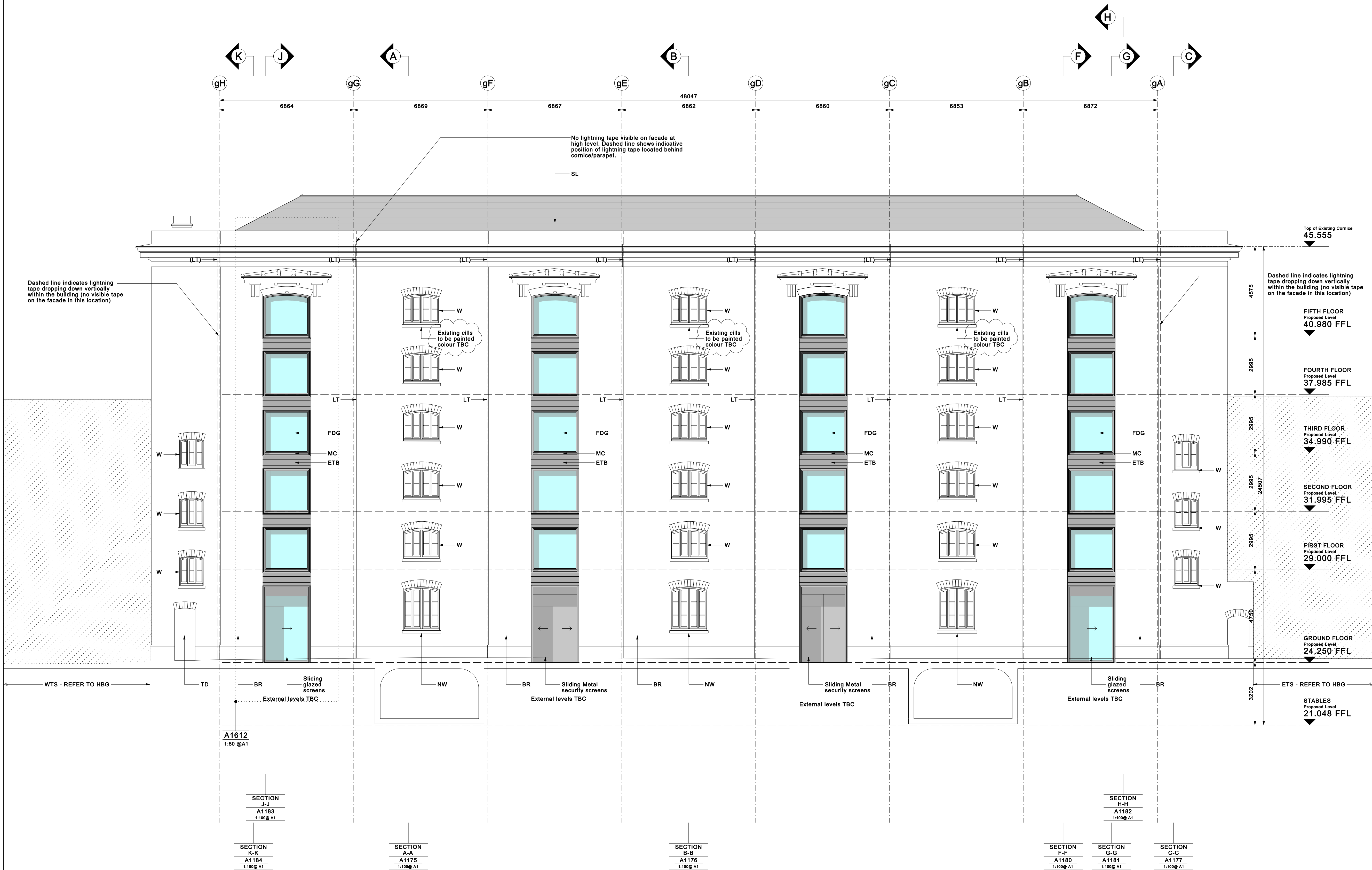


ELEVATION NOTES

Existing FFL's taken from HBG Technical Services drawing 4936/S/A1/910-914.
Proposed FFL taken above highest point of existing level assuming 75mm clear floor void +25mm floor finish zone and rationalised between first and fifth floors.

- BR : Existing brickwork with light cleaning
- EBW : Existing blind window opened up
- FDG : Frameless double glazing with expressed timber lined floor edge
- GD : Glass door
- ETB : Existing Timber Boarding
- LT : Lightning Tape: visible, surface mounted on facade
- (LT) : Lightning Tape: not visible on the facade. Note at high level tape located behind parapet/cornice to both north and south elevations.
- MC : New metal cill
- MD : New flush metal door
- NW : New double glazed window to match existing
- SGES : Double glazed structural glazing with external support structure - Refer to HBG
- SL : Proposed new slate roof - Nu-Lok Roofing system
- SP : Thick steel plate with textured finish
- TD : New hardwood timber door
- W : Existing windows refurbished and double glazed or replaced with matching if condition is poor
- WCL : Semi-arcotic glazed and stainless steel wall climber lifts/metal wall lining

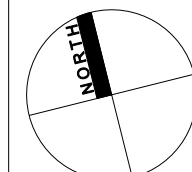
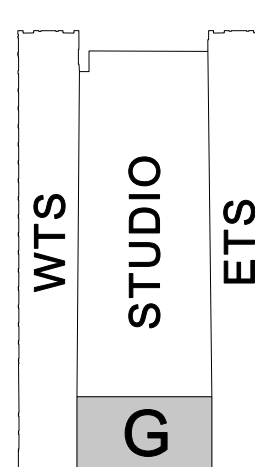


DO NOT SCALE FROM THIS DRAWING

6	RP	12.10.09	Revisions as bubbled (note re cills added)
5	RPJ	01.09.09	Revisions as bubbled (lightning tape notes added)
4	RP	11.08.09	Revisions as bubbled (Lightning tape Indicated)
3	MJA	24.02.09	Revisions as bubbled
2	MJA	04.02.09	Revisions as bubbled
1	MJA	12.11.08	Sliding metal security screens added
0	MJA	07.11.08	ISSUED FOR CONSTRUCTION
E	TMB	12.09.08	Revisions as bubbled
D	TMB	03.09.08	Revisions as bubbled
C	TMB	20.08.08	V.E. AMENDMENTS
B	TMB	04.03.08	Revisions as bubbled
A	TMB	15.01.08	First to Fifth floor levels rationalised Revised key code WN changed to NW
-	TMB	04.12.07	ISSUED FOR COMMENT
rev	by	date	van chkd can amendments



key plan



weedonpartnership architects

Quadrant Court
47+49 Calthorpe Road
Edgbaston
Birmingham
B15 1TH
T 0121 454 4171
F 0121 455 9152
www.weedonpartnership.co.uk
architects@weedonpartnership.co.uk

BIW reference 15900-G-A1150--

project

ARGENT ESTATES LTD.
EGY KINGS CROSS

title

CONTRACT NO. 1
GRANARY BUILDING
PROPOSED SOUTH ELEVATION

drawing status

CONSTRUCTION

contract no. scale 1:100 @ A1

client ref. date NOV 2007

drawn by TMB checked by

drawing no 15900 G A1150 6