



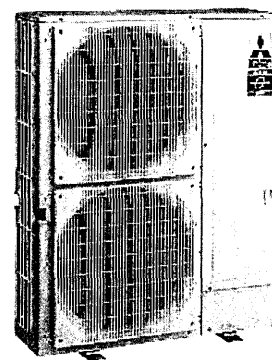
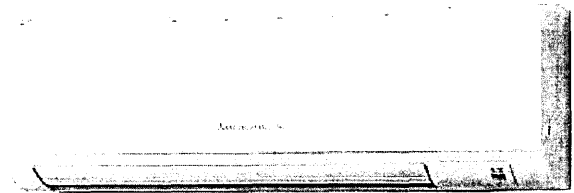
PKA-RP100KAL

Power Inverter Heat Pump

R410A Wall Mounted System

Advanced inverter with 410V compressor for superior efficiency and energy saving. The inverter compressor provides up to 30% energy saving compared to a standard compressor. The inverter compressor also provides up to 30% energy saving compared to a standard compressor. The inverter compressor also provides up to 30% energy saving compared to a standard compressor.

- New fan blade design for better airflow
- Adjustable louvers for uniform air distribution
- Inverter type compressor to save installation cost for easy and fast installation



Pictures not to scale

Product Details

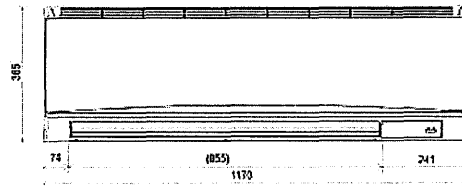
PKA-RP100KAL Indoor Unit

Capacity (kW):	
Heating (Nominal) (Low - High)	11.20 (4.50 - 14.00)
Cooling (Nominal) (Low - High)	10.00 (4.90 - 11.40)
Heating (UK) (Low - High)	9.50 (3.85 - 11.90)
Cooling (UK) (Low - High)	9.20 (4.50 - 10.50)
SHF R410A (Nominal)	0.73
COP / EER (Nominal)	3.61 / 3.45
Energy Label Heating / Cooling	A / A
Width - mm	1170
Depth - mm	295
Height - mm	365
Weight - kg	21
Airflow (m ³ /min) - Lo-Mi-Hi	20-23-26
Noise (dBA) - Lo-Mi-Hi	41-45-49
Pipe Size Gas mm (in)	15.88 (5/8)
Pipe Size Liquid mm (in)	9.52 (3/8)
Electrical Supply	Fed by Outdoor Unit
Phase	Single
Fuse Rating (BS88) - HRC (A)	6
Interconnecting Cable No. Cores	4

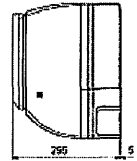
Dimensions

PKA-RP100KAL

Front View >



Side View >

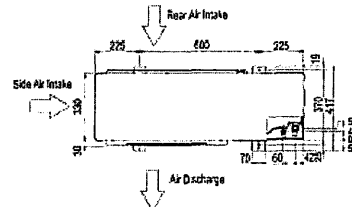


PUHZ-RP100VKA Outdoor Unit

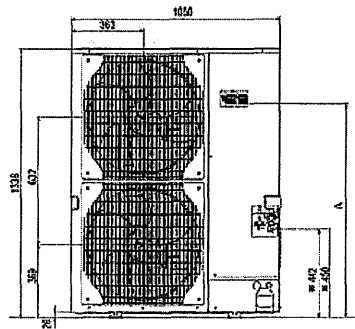
Width - mm	1050
Depth - mm	330+30
Height - mm	1338
Weight - kg	116
Noise (dBA) (Heating /Cooling) - Lo-Hi	51 /46-49
Electrical Supply	220-240v, 50Hz
Phase	Single
Fuse Rating (BS88) - HRC (A)	32
SystemPower Input (kW) - Heating (Nominal)	3.1
SystemPower Input (kW) - Cooling (Nominal)	2.9
SystemPower Input (kW) - Heating (UK)	2.76
SystemPower Input (kW) - Cooling (UK)	2.47
Starting Current (A)	5
SystemRunning Current (A) - Heating / Cooling	14.15 / 13.25
Mains Cable No. Cores	3
Max Pipe Length (m)	75
Max Height Difference (m)	30
Charge (kg) - 30m	5

PUHZ-RP100VKA

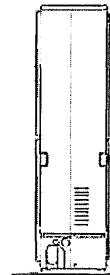
Upper View >



Front View >



Right Side View >



Telephone: 01707 282880

Email: air.conditioning@meuk.mee.com Website: <http://www.mitsubishielectric.co.uk/aircon>

Tel:
Fax:

Mitsubishi Electric reserves the right to make any variation in technical specification to the equipment described, or to withdraw or replace products without prior notification or public announcement.

