

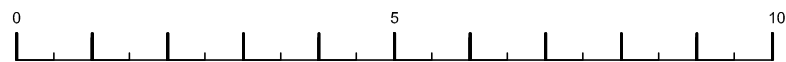
HATCH LEGEND	
	COMMERCIAL AREAS
	RESIDENTIAL COMMUNAL AREAS
	RESIDENTIAL AREAS



Datum 20.000m

FRONT ELEVATION

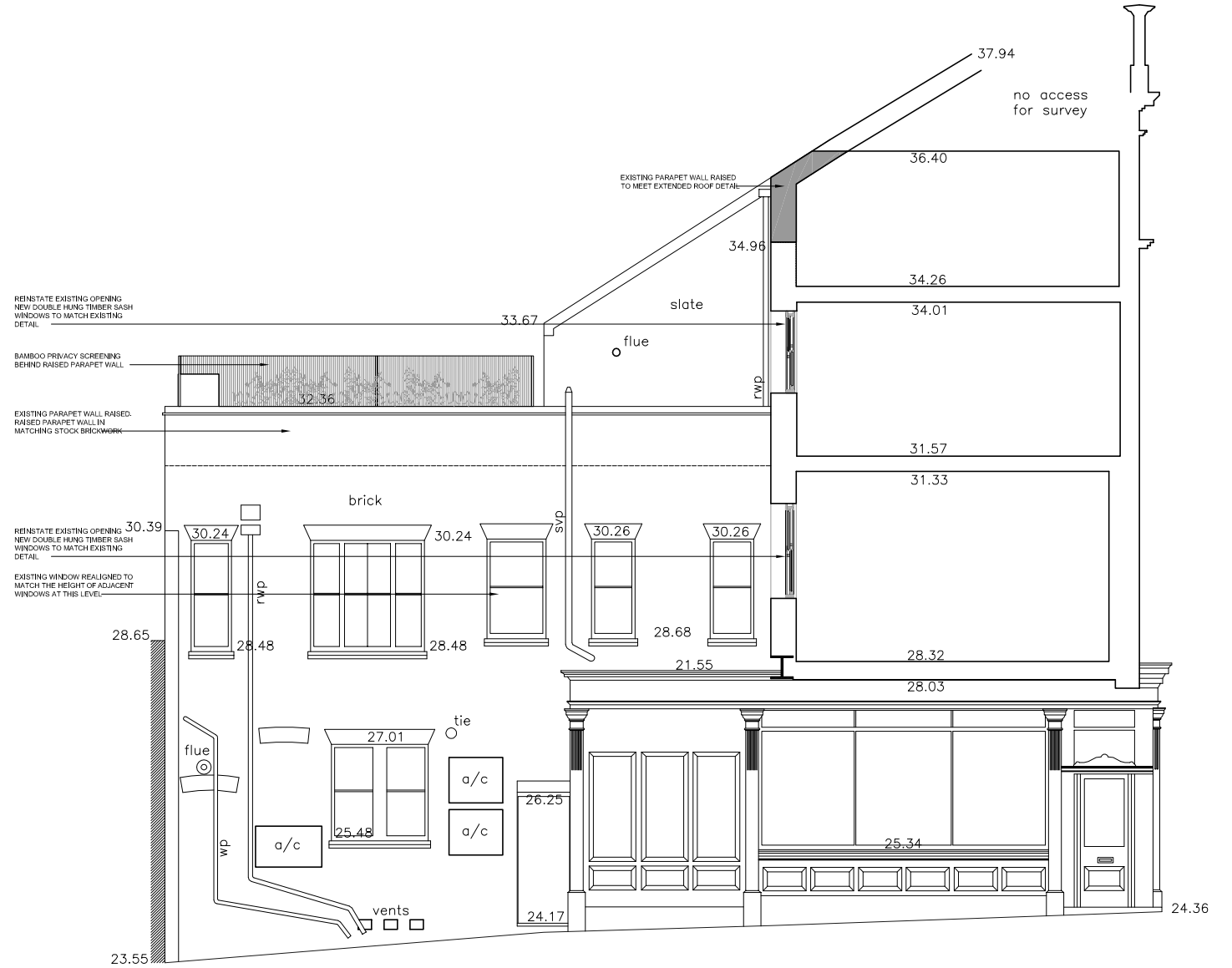
NOTES:



REVISIONS:

A	09.11.2010	PRELIMINARY ISSUE TO PLANNERS
B	22.11.2010	ISSUED TO CLIENT FOR COMMENTS
C	26.11.2010	ISSUED FOR PLANNING APPLICATION

bdAr architects designers is the trading name of bdAr Ltd



Datum 20.000m

SIDE ELEVATION

North	Client CRITERION MANAGEMENT	Project THE LORD JOHN RUSSELL PUBLIC HOUSE
Scale: 1:50@A1 1:100@A3	Drawn by YVY	Drawing Title PROPOSED ELEVATIONS
Project No. CAM 8	Date NOVEMBER 2010	Checked by BD
		Drawing No. CAM 8 - C5
		Rev C

bdAr architects designers
 Ground Floor South
 Staple Inn Buildings
 London WC1V 7PZ
 t: +44 (0)207 043 3551
 f: +44 (0)207 043 3552
 www.bdar.co.uk