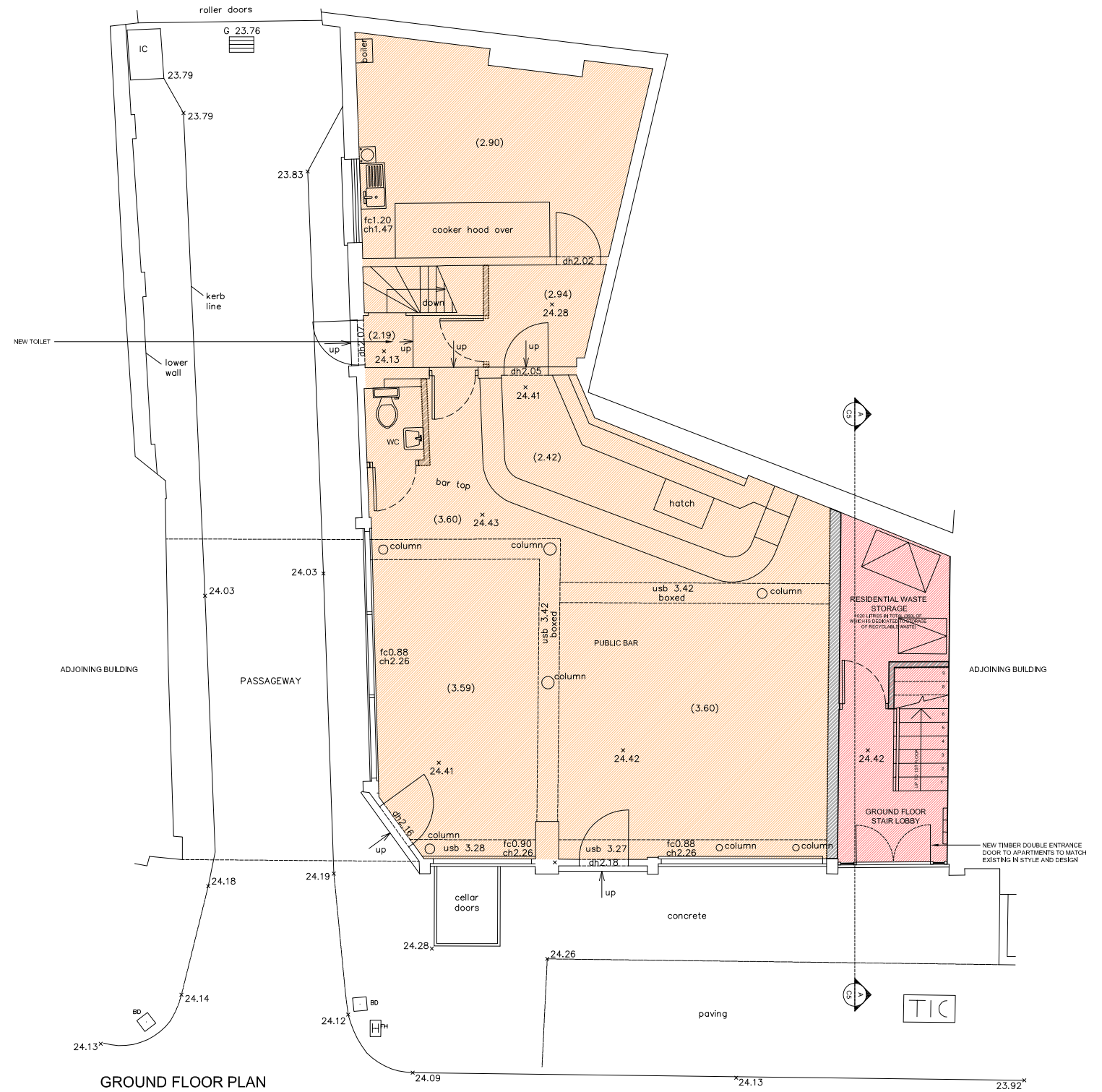
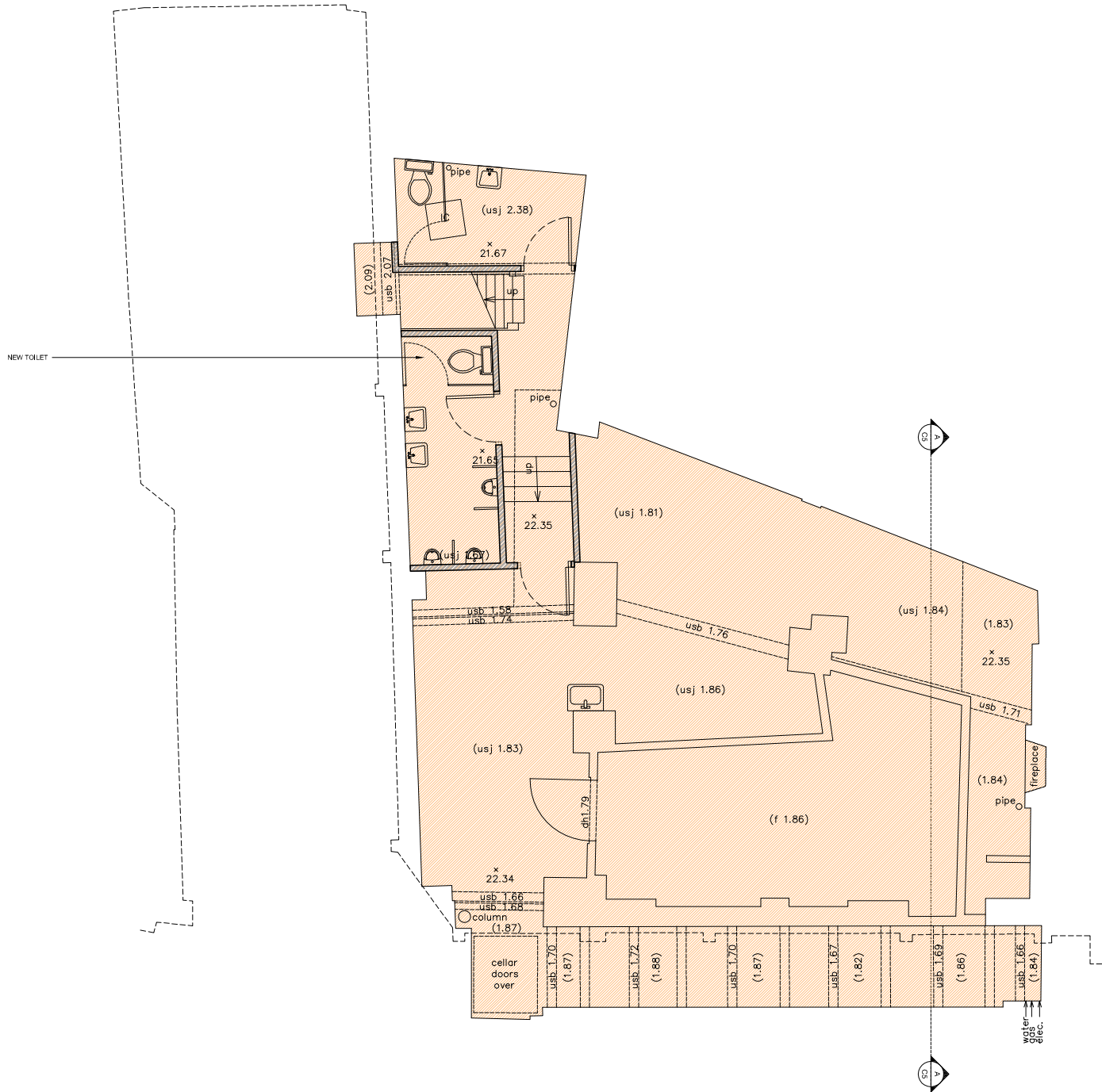


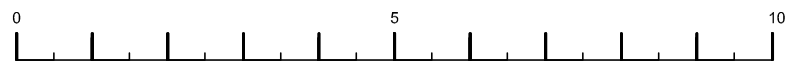
HATCH LEGEND	
	COMMERCIAL AREAS
	RESIDENTIAL COMMUNAL AREAS
	RESIDENTIAL AREAS



BASEMENT FLOOR PLAN

GROUND FLOOR PLAN

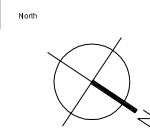
NOTES:



REVISIONS:

Rev	Date	Description
A	09.11.2010	PRELIMINARY ISSUE TO PLANNERS
B	22.11.2010	ISSUED TO CLIENT FOR COMMENTS
C	26.11.2010	ISSUED FOR PLANNING APPLICATION

bdAr architects designers is the trading name of bdAr Ltd



Client	CRITERION MANAGEMENT	Project	THE LORD JOHN RUSSELL PUBLIC HOUSE
Scale	1:50@A1 1:100@A3	Drawn by	YVY
Project No.	CAM 8	Checked by	BD
Date	NOVEMBER 2010	Drawing Title	PROPOSED PLANS
		Drawing No.	CAM 8 - C2
		Rev	C

bdAr architects designers
 Ground Floor South
 Staple Inn Buildings
 London WC1V 7PZ
 t: +44 (0)207 043 3551
 f: +44 (0)207 043 3552
 www.bdar.co.uk