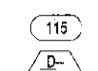

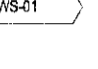



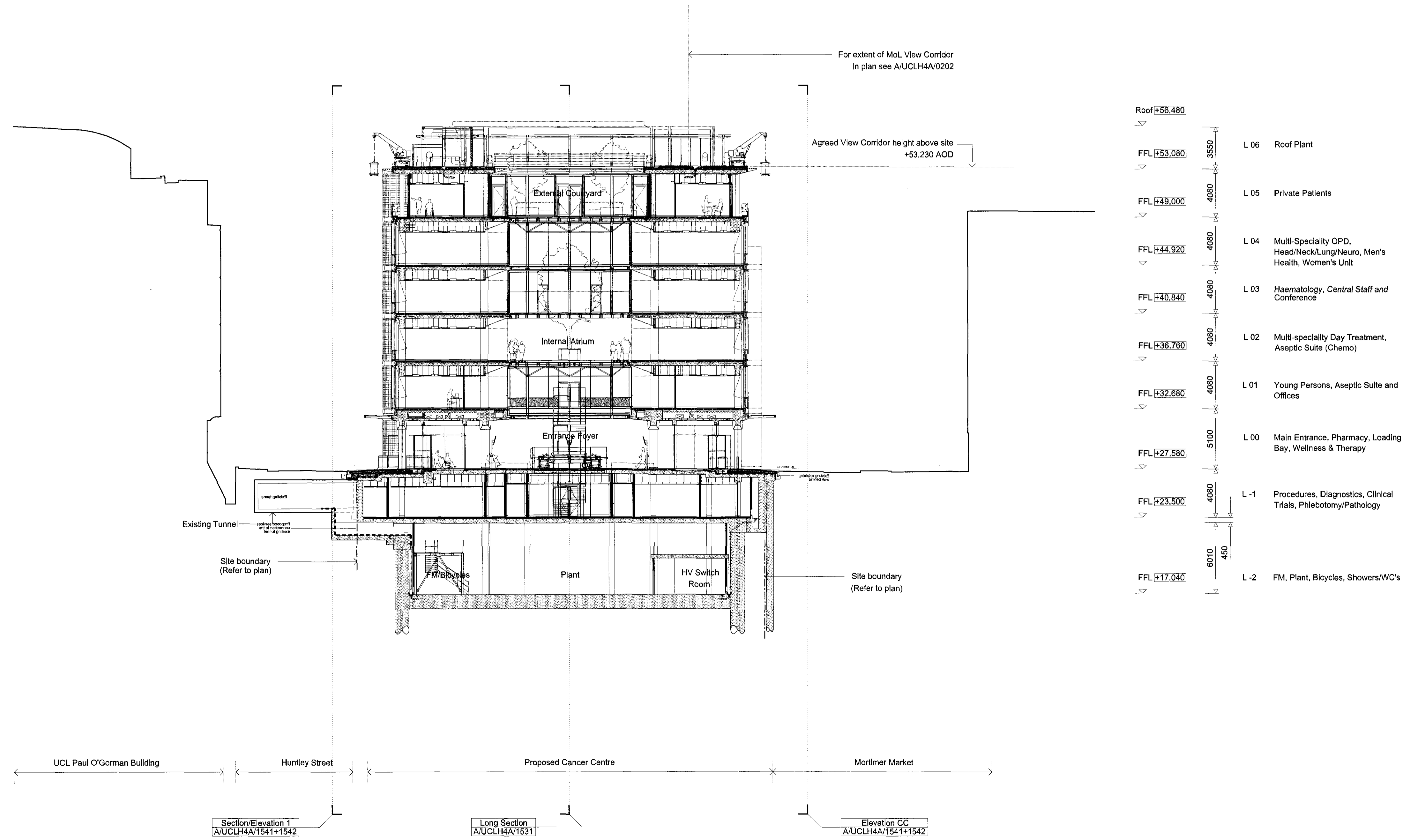


- General Notes:**
- G1 For Site and Grid setting out refer to A/UCLH4A/3000
 - G2 All dimensions to be checked on site
 - G3 Any discrepancies between drawings to be reported to the Architect immediately.
 - G4 All Levels are above ordnance datum (AOD)
New Levels are shown thus: +20.345
Existing Levels are shown thus: EX:20.345
Retained Existing Levels: EX:20.345
 - G5 Use figured dimensions only. Do not scale from drawings. IF IN DOUBT, ASK.
 - G6 Refer to Structural Engineers drawings for all structural and services information.
 - G7 For tolerances see the Design Drawings and Specifications
 - G8 For elements of work subject to Contractor's Design, this drawing is indicative of the visual & performance requirements only. The Contractor is responsible for the detailed design and co-ordination of the installation within the parameters defined in the specification, design drawings, contract terms and contract documents.
 - G9 Room numbers are shown thus: 
 - G10 Door (D) & Window (W) References are shown thus: 
 - G11 Clear height is shown thus (finished floor to finished soffit) 
 - G12 T Sheet Reference shown thus 
 - G13 Finishes are shown thus: 
 - G14 Setting Out Points shown thus: 
 - G15 Refer to A/UCLH4A/9100 for T Sheet references, and to A/UCLH4A/9110 to 9167 for Architectural Specifications.



Roof +56.480	3550	L 06	Roof Plant
FFL +53.080	4080	L 05	Private Patients
FFL +49.000	4080	L 04	Multi-Specialty OPD, Head/Neck/Lung/Neuro, Men's Health, Women's Unit
FFL +44.920	4080	L 03	Haematology, Central Staff and Conference
FFL +40.840	4080	L 02	Multi-specialty Day Treatment, Aseptic Suite (Chemo)
FFL +36.760	4080	L 01	Young Persons, Aseptic Suite and Offices
FFL +32.680	5100	L 00	Main Entrance, Pharmacy, Loading Bay, Wellness & Therapy
FFL +27.580	4080	L -1	Procedures, Diagnostics, Clinical Trials, Phlebotomy/Pathology
FFL +23.500	450	L -2	FM, Plant, Bicycles, Showers/WC's
FFL +17.040			

Cross Section
Planning Existing

Work Package	Cost Check	Info/Briefing	Tender	Contract	Construction	Date	Ref.	Revision	Date	Ref.	Revision	Project	Sort Code	Drawing Number	Rev.
						25.11.10	A	Draft				UCLH4A - Phase 3 Cancer Centre	A / UCLH4A	1575	B
						10.12.10	B	Drawing submitted for planning to show PET MR chiller enclosure & landscaping amendments. Memo ref. 2536				Subject			
												Architects			
												Hopkins Architects Partnership LLP 27 Broadley Terrace, London, NW1 6LG T: 020 7724 1751 E: mail@hopkins.co.uk			
												Date	09.02.09	Scale	1:200 at A1