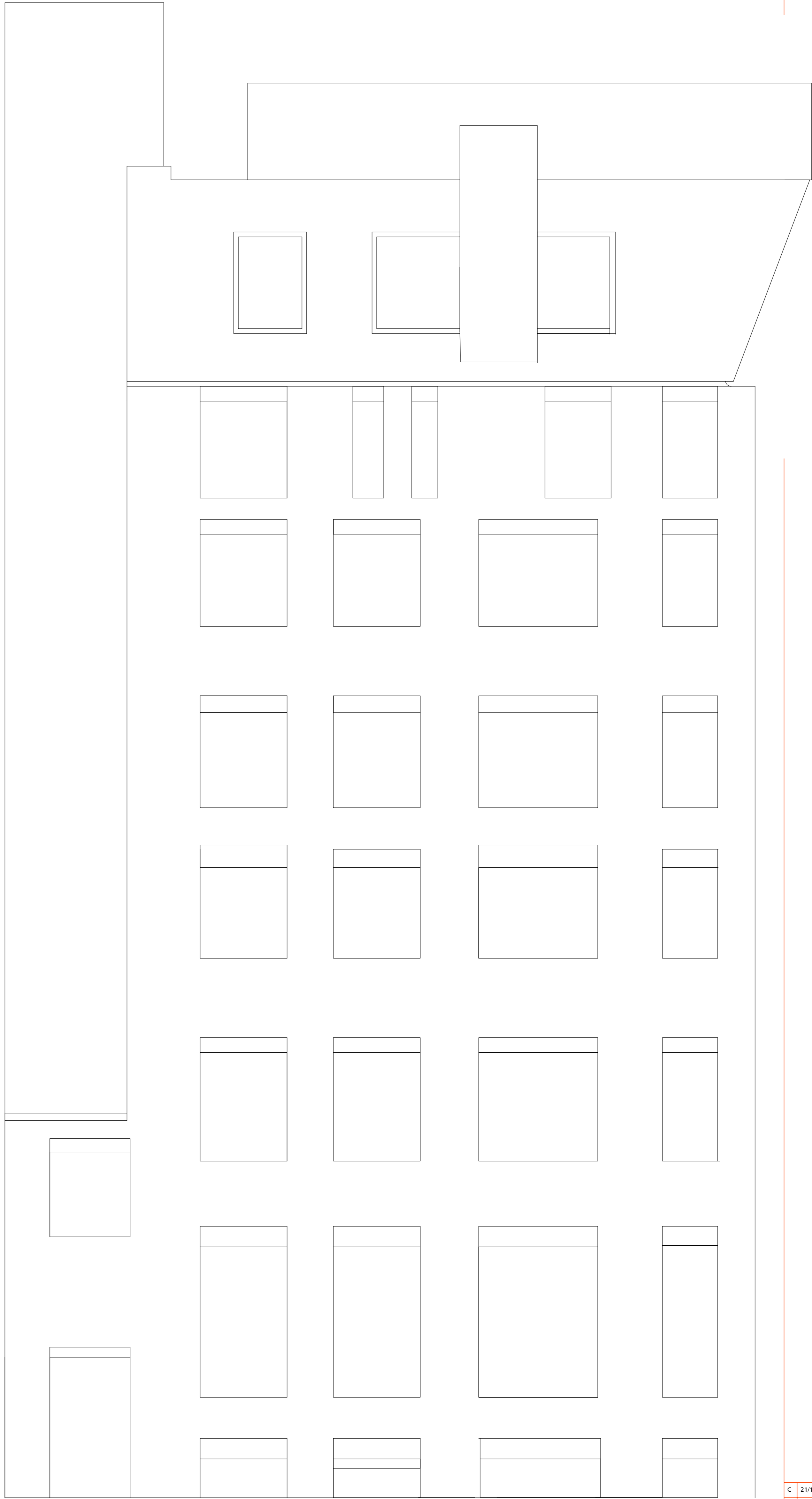
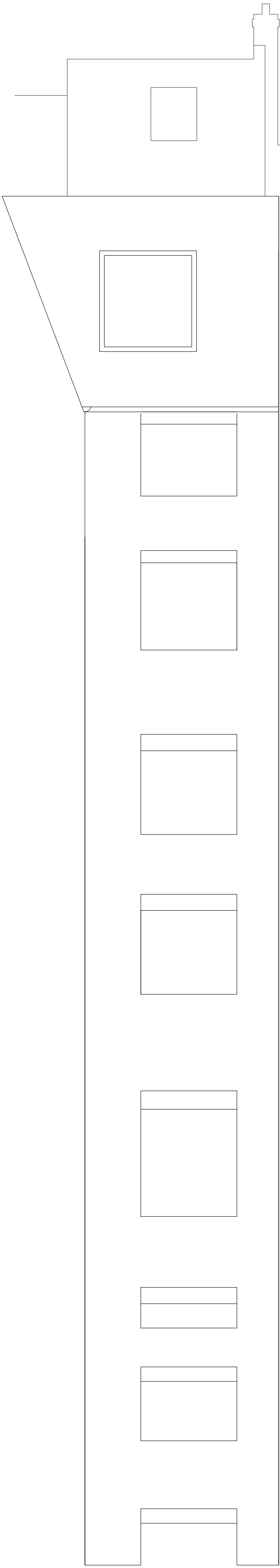
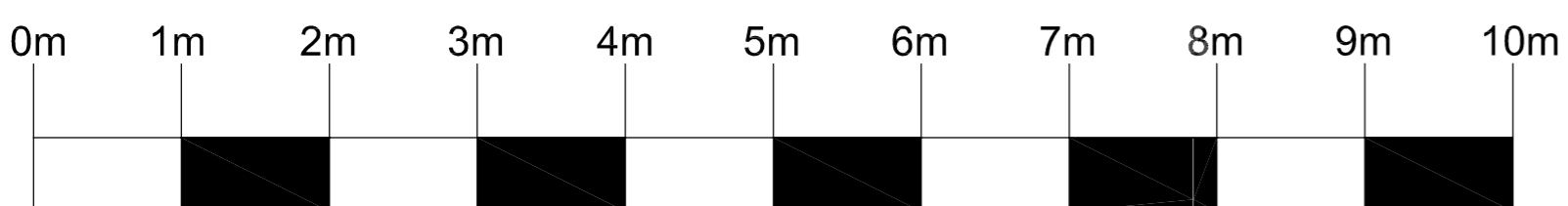


notes:



EXISTING MIDDLE YARD ELEVATION (North West)

EXISTING MIDDLE YARD ELEVATION (South West)



REV	DATE	DESCRIPTION	DRAWN	CHECKED
C	21/12/2010	Windows below chimney, roof structures	PD	MW
B	26/11/2010	General revisions	PD	MW
A	12/10/2010	General revisions	PD	MW

Revisions



PLANNING

Chaplin Farrant Wiltshire Limited

Bank Chambers
69 High Street
Winchester
Hampshire
SO23 9DA

Tel: 01962 862234
Fax: 01962 840506
email: studio@cfw-architects.com
www.cfw-architects.com

Also at:
5 Cranbury Place
Southampton
Hampshire
SO14 0LG
Norwich
London

This drawing is copyright of the Architects and shall not be reproduced without their permission.

Check all dimensions and report any errors or omissions.

Kensington College of Business

Student Accommodation

4 Wild Court London

Existing Elevations
Middle Yard

J10735

AE204 C

06/10/2010 1:50@A1

PD MW

notes:



REV	DATE	DESCRIPTION	DRAWN	CHECKED
A	21/12/2010	Windows below chimney, dormers	PD	MW

Revisions

CFW
Architects Designers Visualisers

PLANNING

Chaplin Farrant
Wiltshire Limited

Bank Chambers
69 High Street
Winchester
Hampshire
SO23 9DA
Tel: 01962 862234
Fax: 01962 840906
email: studio@cfw-architects.com
www.cfw-architects.com

Also at:
5 Cranbury Place
Southampton
Hampshire
SO14 0LG
Norwich
London

This drawing is copyright of the Architects and shall not be reproduced without their permission.
Check all dimensions and report any errors or omissions.

Kensington College of Business
Client

Student Accommodation
4 Wild Court London
Project

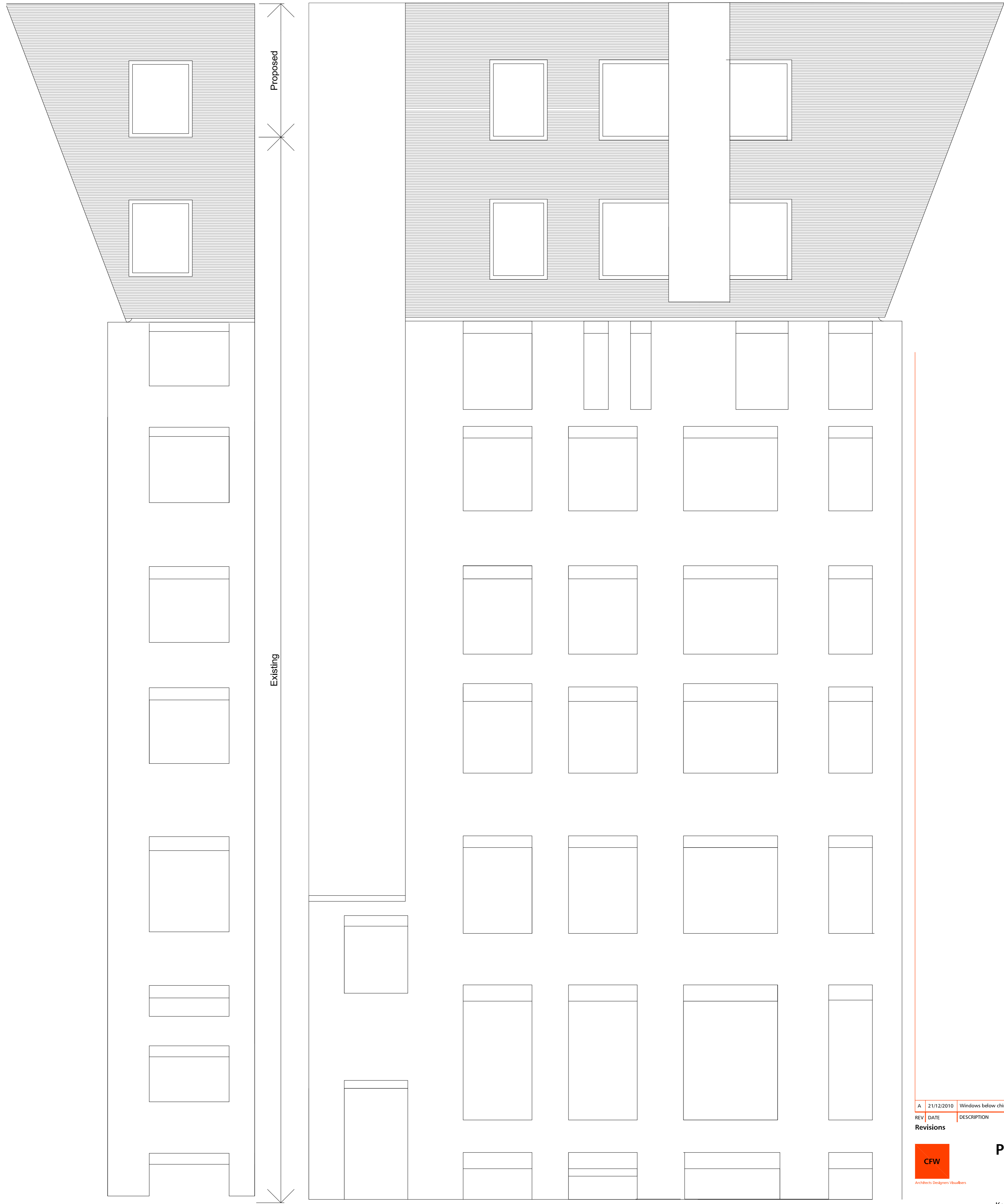
Additional Floor Space
Proposed Elevations
Middle Yard
Drawing

J10735
Project Ref

AE254 A
Drawing No Revision

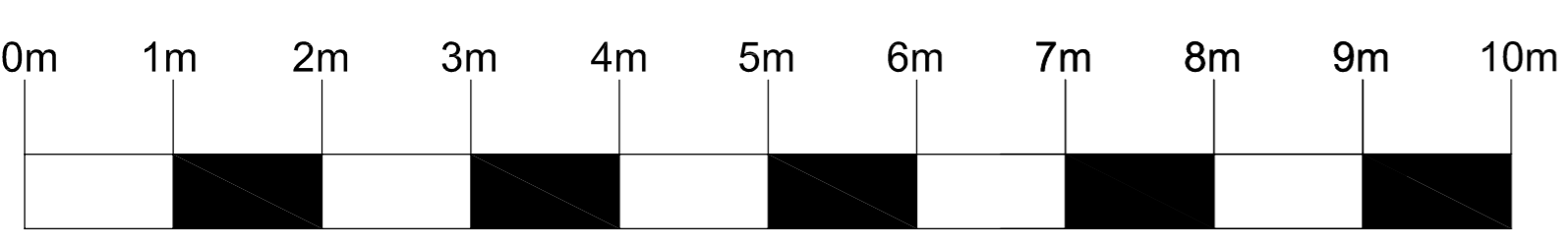
06/10/2010 1:50@A1
Date Scale

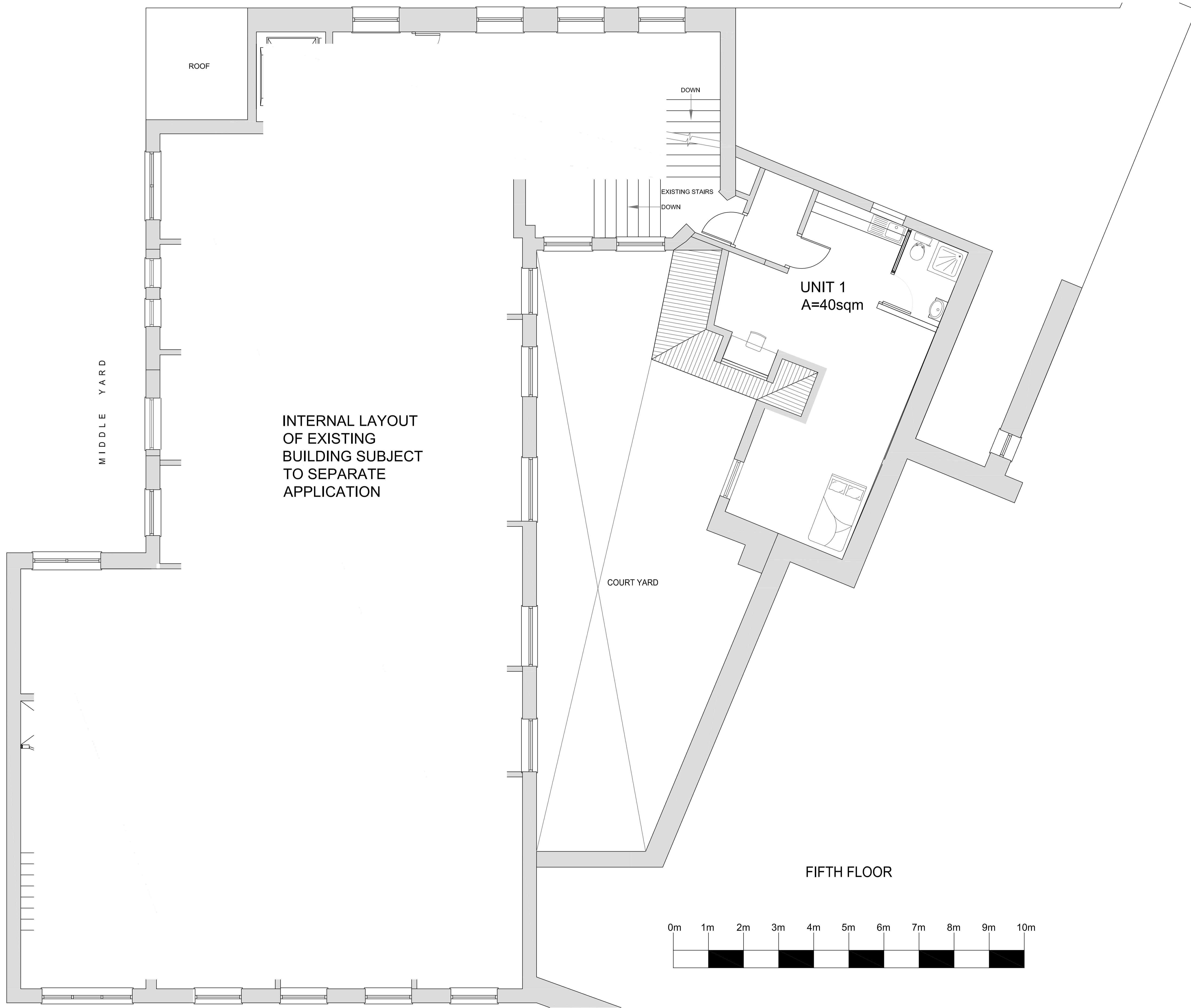
PD MW
Drawn By Checked By



PROPOSED MIDDLE YARD ELEVATION (North West)

PROPOSED MIDDLE YARD ELEVATION (South West)





INTERNAL LAYOUT
OF EXISTING
BUILDING SUBJECT
TO SEPARATE
APPLICATION

UNIT 1
A=40sqm

COURT YARD

MIDDLE YARD

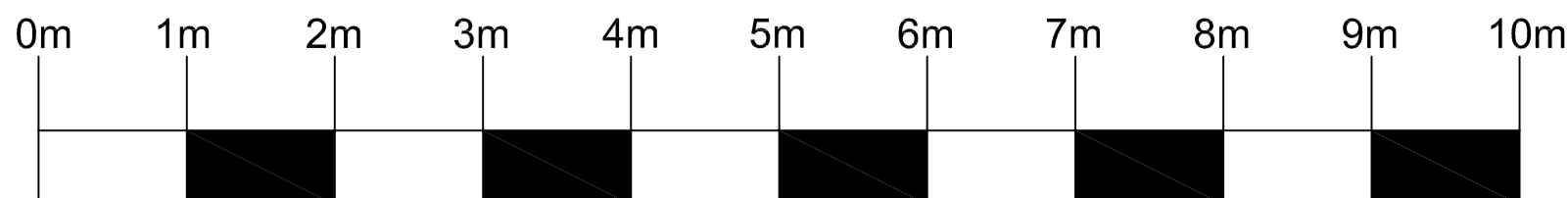
ROOF

DOWN

EXISTING STAIRS

DOWN

FIFTH FLOOR



NOTES:

REV	DATE	DESCRIPTION	DRAWN	CHECKED
A	21/12/2010	Windows to Middle Yard as existing. Light well.	PD	MW

REV	DATE	DESCRIPTION	DRAWN	CHECKED
A	21/12/2010	Windows to Middle Yard as existing. Light well.	PD	MW

CFW
Architects Designers Visualisers

PLANNING

Chaplin Farrant Wiltshire Limited

Bank Chambers
69 High Street
Winchester
Hampshire
SO23 9DA
Tel: 01962 862234
Fax: 01962 840506
email: studio@cfw-architects.com
www.cfw-architects.com

Also at:
5 Cranbury Place
Southampton
Hampshire
SO14 0LG
Norwich
London

This drawing is copyright of the Architects and shall not be reproduced without their permission.
Check all dimensions and report any errors or omissions.

Kensington College of Business

Student Accommodation 4 Wild Court London

Additional Floor Space Proposed Plans Fifth Floor

J10735

AP150

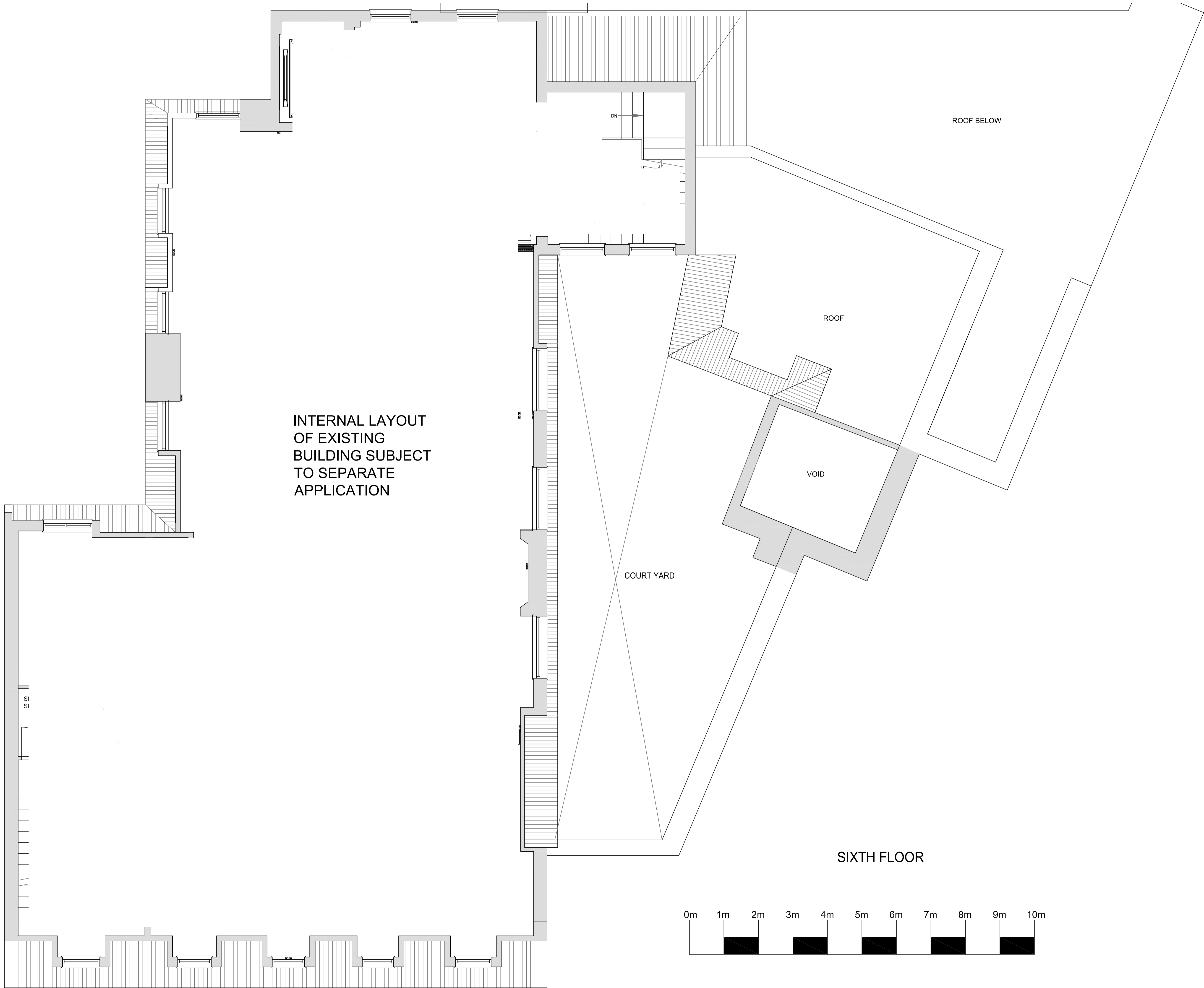
A

06/10/2010

1:50@A1

PD

MW



notes:

REV	DATE	DESCRIPTION	DRAWN	CHECKED
A	21/12/2010	Light well	PD	MW

Revisions

REV	DATE	DESCRIPTION	DRAWN	CHECKED
A	21/12/2010	Light well	PD	MW

CFW
Architects Designers Visualisers

PLANNING

Chaplin Farrant Wiltshire Limited
Bank Chambers
69 High Street
Winchester
Hampshire
SO23 9DA
Tel: 01962 862234
Fax: 01962 840506
email: studio@cfw-architects.com
www.cfw-architects.com

Kensington College of Business
CURRENT

Student Accommodation 4 Wild Court London
PROJECT

Additional Floor Space Proposed Plans Sixth Floor
DRAWING

J10735
PROJECT REF.

AP151 **A**
DRAWING NO. REVISION

06/10/2010 **1:50@A1**
DATE SCALE

PD **MW**
DRAWN BY CHECKED BY

This drawing is copyright of the Architects and shall not be reproduced without their permission.
Check all dimensions and report any errors or omissions.



notes:

REV	DATE	DESCRIPTION	DRAWN	CHECKED
A	21/12/2010	Light well	PD	MW

Revisions

REV	DATE	DESCRIPTION	DRAWN	CHECKED
A	21/12/2010	Light well	PD	MW

CFW
Architects Designers Visualisers

PLANNING

Chaplin Farrant Wiltshire Limited

Bank Chambers
69 High Street
Winchester
Hampshire
SO23 9DA
Tel: 01962 862234
Fax: 01962 840506
email: studio@cfw-architects.com
www.cfw-architects.com

Also at:
5 Cranbury Place
Southampton
Hampshire
SO14 0LG
Norwich
London

This drawing is copyright of the Architects and shall not be reproduced without their permission.
Check all dimensions and report any errors or omissions.

Kensington College of Business
CURRENT

Student Accommodation 4 Wild Court London
PROJECT

Additional Floor Space Proposed Plans Seventh Floor
DRAWING

J10735
PROJECT REF.

AP152 **A**
DRAWING NO. REVISION

06/10/2010 **1:50@A1**
DATE SCALE

PD **MW**
DRAWN BY CHECKED BY



notes:

REV	DATE	DESCRIPTION	DRAWN	CHECKED
A	21/12/2010	Light well	PD	MW

Revisions

REV	DATE	DESCRIPTION	DRAWN	CHECKED
A	21/12/2010	Light well	PD	MW

CFW
Architects Designers Visualisers

PLANNING

Chaplin Farrant Wiltshire Limited
Bank Chambers
69 High Street
Winchester
Hampshire
SO23 9DA
Tel: 01962 862234
Fax: 01962 840506
email: studio@cfw-architects.com
www.cfw-architects.com

Kensington College of Business
Client

Student Accommodation 4 Wild Court London
Project

Additional Floor Space Proposed Plans
Roof
Drawing

J10735
Project Ref

AP153
Drawing No

A
Revision

06/10/2010
Date

1:50@A1
Scale

PD
Drawn By

MW
Checked By

This drawing is copyright of the Architects and shall not be reproduced without their permission.
Check all dimensions and report any errors or omissions.