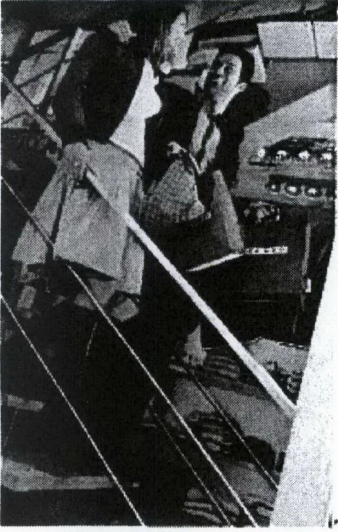
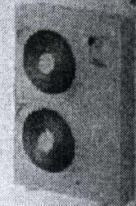


RXYSQ4-6P7V3B

VRVIII-S Inverter heat pump



- High COP values
- Maximum 9 indoor units per outdoor unit
- Silent operation
- Small capacities - 4, 5 & 6HP
- Super wide range of indoor units
- Slim & flexible design
- Space saving outdoor unit



RXYSQ-P7V3B

HEAT PUMP

Outdoor Unit				RXYSQ4P7V3B	RXYSQ5P7V3B	RXYSQ6P7V3B
Capacity range		HP	4	5	6	
Capacity	Cooling	kw	11.2	14.0	15.5	
	Heating	kw	12.5	16.0	18.0	
Dimensions	(Height x Width x Depth)		mm			
Weight			kg			
Sound Level	Sound Power	Cooling	dBA	66	67	69
	Sound Pressure	Cooling	dBA	50	51	53
		Heating	dBA	52	53	55
Air Flow Rate (nominal at 230V)	Cooling		m ³ /min	102	106	105
	Heating		m ³ /min			
Operation Range	Cooling	Min-Max	°CDB		-5.0-46	
	Heating	Min-Max	°CWB		-20-15.5	
Refrigerant			R-410A			
Power Supply			1~230V/50Hz			
Max n° of indoor units to be connected			6			
Piping connections	Liquid (OD)/Gas/Drain	mm	9.52 / 15.9 / 26 x 3			
Max total length			m			