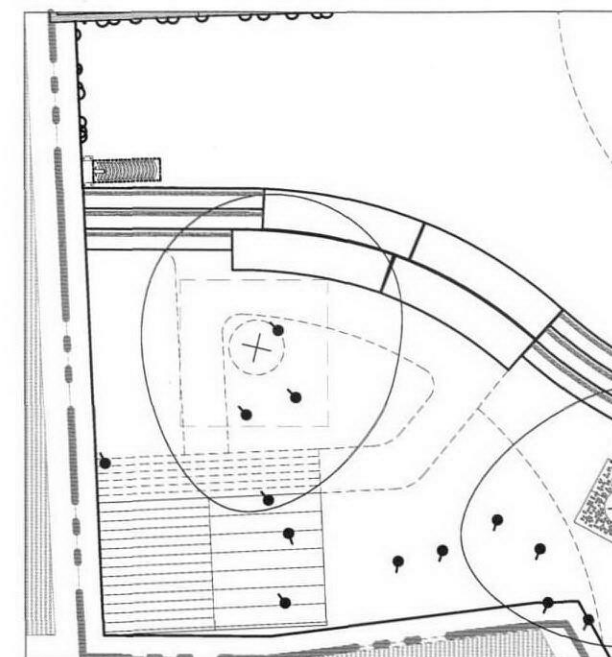


Semi mature multistemmed Amelanchier lamarckii, Rootball, 5x transplanted, min 3 main trunks breaking at ground level 18-20cm girth, min. 4.0-5.0m height, clear stem 1.75-2m. Planting as set out on Planting Plan bd 0055 DD 003

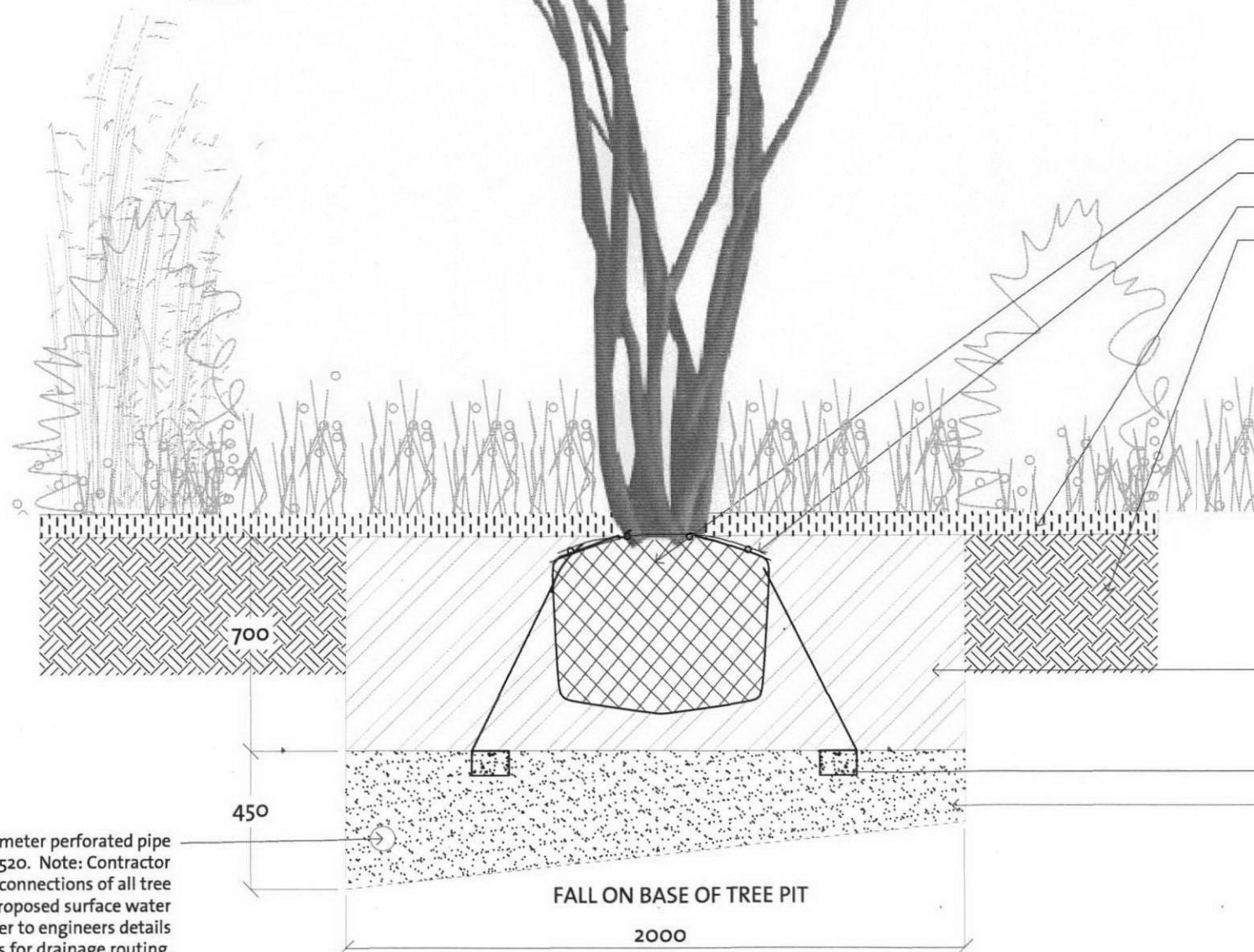


Plan showing extent of tree pit

- Rootball (700mm); Q31 499 and planting schedule bd 0055 DD 404.
- Plati-mat (PM3 plati-mat kit); Q31 585.
- 75mm depth ornamental grade bark mulch ; Q31 485
- 450mm deep topsoil with specified ameliorants; Q28 332

- Ameliorated topsoil; Q28 332. Pit to be 2m diameter x 1.15m deep unless otherwise noted. Backfill pre-blended ameliorated topsoil, comprising of 4 parts topsoil : 1 part bio-organic tree/shrub compost (peat free).
- Underground guying by Platipus or equal & approved; Q31 585
- 450mm depth clean angular stone drainage layer; Q31 521.

Tree drain - 80mm diameter perforated pipe wrapped in terram; Q31 520. Note: Contractor to allow for positive connections of all tree drains to existing/proposed surface water drainage system. Refer to engineers details and specifications for drainage routing.



- GENERAL NOTES:
1. ALL DIMENSIONS AND LEVELS SHALL BE CHECKED ON SITE PRIOR TO CONSTRUCTION WORK COMMENCING.
 2. ALL LANDSCAPE DRAWINGS TO BE READ IN CONJUNCTION WITH ALL RELEVANT ENGINEER'S AND ARCHITECT'S DRAWINGS AND SPECIFICATIONS.
 3. ALL DRAWINGS TO BE READ IN CONJUNCTION WITH THE LANDSCAPE SPECIFICATION.
 4. ANY DISCREPANCY CONCERNING THE DRAWINGS SHOULD BE REFERRED TO THE CA IMMEDIATELY.
 5. ALL DIMENSIONS IN MILLIMETRES UNLESS NOTED OTHERWISE.
 6. ALL LEVELS IN METRES.
 7. DO NOT SCALE OFF THIS DRAWING.
 8. EXISTING SERVICE ALIGNMENTS SHALL BE CHECKED ON SITE BY THE CONTRACTOR PRIOR TO CONSTRUCTION WORK COMMENCING.

01	29.10.2010	Employers Requirements Issue	LB	RB
00	16.09.2010	Issued for Comment	HK	RB
Rev	Date	Description	Drawn	CHK'd

b:d
landscape architects ltd
Sun Street
Tewkesbury
GLOS GL20 9HX
t: 01295 155 775
e: info@bellandarch.com
w: www.bellandarch.com

landscape architecture
urban design

CLIENT
London Diocesan Board for Schools, London Borough of Camden & Emmanuel C of E Primary School

PROJECT
Emmanuel C of E School

TITLE
Tree Planting to Soft Landscape Typical Detail

Status:	Drawn:	Checked:
Stage E	HK	RB
Scale:	Date:	Approved:
1:20	16.09.2010	RB

Drawing & Revision Number:
bd 0055 DD 303 R01