

Scale 1:75

Back Lit Portrait Display

Specification

The most popular material for large back illuminated displays is continuous sheet PVC and mesh reinforced PVC. The flexible PVC is satin white 0.375mm thick and is stretched onto an aluminium tension frame within the back light box, which has hinged mouldings for easy access. As PVC may be folded or rolled its size can be kept to a minimum to facilitate easy despatch.

The ideal artwork from which to produce a pictorial display is a photographic transparency size 254mm together with, where necessary, a scale layout showing the positioning of pictorial and lettering etc. The artwork is enlarged to the required size by using episcopes and projectors and the outline images transferred to the PVC. Highly skilled artists then reproduce the fine detail of the artwork using as many colours and shades as required.

The paint used is specially formulated for flexibility and adhesion, an essential requirement for sheet PVC and is extremely durable with excellent colourfast properties for external use. After client inspection and approval a coat of clear varnish is applied for further protection and this has the added property of promoting translucency when required. The paints have excellent opacity and translucency properties enabling the artist's skill to provide the correct visual requirement for any advertising display situation.

In addition to the specialist skills in producing hand drawn displays, photographic mediums such as ciberchromes, durantrans, etc, are utilised along with silk-screen printing when practical.

Illumination

By 20 3000mm x 25mm diameter 58 watt fluorescent tubes arranged in two banks vertically aligned. Tubes are cool white and each wired to separate HPF control gear. All wired to an internally fitted fused switch which in turn is wired to lock switch fitted externally at one end of the box.

All of the internal wiring, earthing and electrical components comply with their relevant British Standard and are installed in accordance with BS7671 in the 16th Edition of the IEE Wiring Regulations. This product also complies with the relevant European CE directives as follows:

Low voltage directive 73/23/CEE (Electrical Specifications)

NFC15100 French electrical specifications for low voltage installations, modified to comply with BS7671.

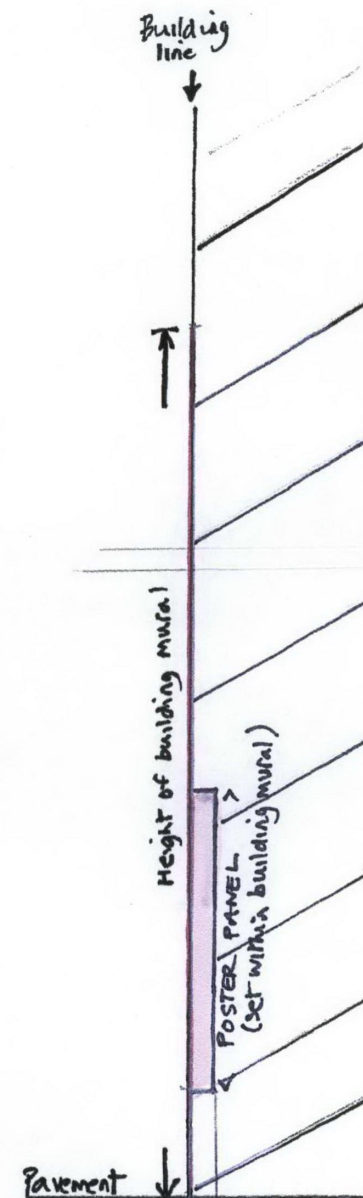
EN 60598-1: Luminaires: Electrical lighting.

EN 60598-1: Low voltage switch gear.

ECM Specifications (Electromagnetic compatibility) 89/336/CEE

EN 55015: Measurement of radio disturbance characteristics of electrical lighting and similar equipment.

EN 50082-1: Generic Immunity standard Part 1: Residential commercial and light industry. Electricity connection is generally to the regional electricity network. Power supply: 220/240V



SECTION

Scale 1:200

DRAWING NO
PK 1.