

RECEIVED 13 APR 2011



WEST ELEVATION

(No 56 FITZJOHN'S AVENUE)

(A.O.D. 77.00m)

(No 58)

(No 54)

(No 54 - 48)



THE CHARLTON BROWN PARTNERSHIP  
ARCHITECTS

The Old Chapel Shepherds Walk Hampstead London NW3 9UE T 020 7794 1234 F 020 7435 5085 E office@charltonbrown.com

CONVERSION & EXTENSION

APPROVED PLANNING DRAWINGS - 2010/5786/P

FLAT No 8, DAPHNE COURT, No 56 FITZJOHN'S AVENUE, AP/1142-5

Date SEPTEMBER '10 Scale 1:100 @A2 This drawing is copyright Revisions





RECEIVED 13 APR 2011



WEST ELEVATION

(No 56 FITZJOHN'S AVENUE)

(A.O.D 77.60m)

(No 58)

(No 54)



THE CHARLTON BROWN PARTNERSHIP  
ARCHITECTS

The Old Chapel Shepherds Walk, Hemphel, London NW3 5JF T 020 7794 1234 F 020 7435 5045 E office@charltonbrown.com

CONVERSION & EXTENSION  
EXISTING

FLAT No 8, DAPHNE COURT, No 56 FITZJOHN'S AVENUE, AP/1142-1

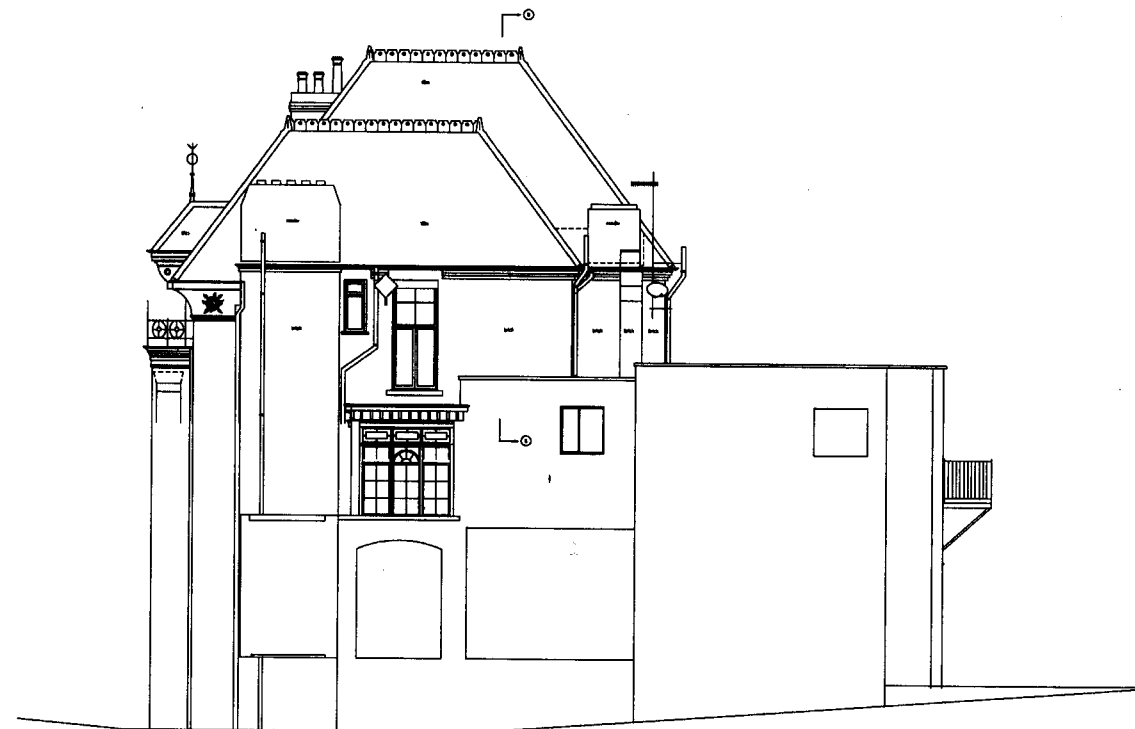
Date SEPTEMBER 10 Scale 1:100 (A2) This drawing is copyright Revisions

RECEIVED 13 APR 2011

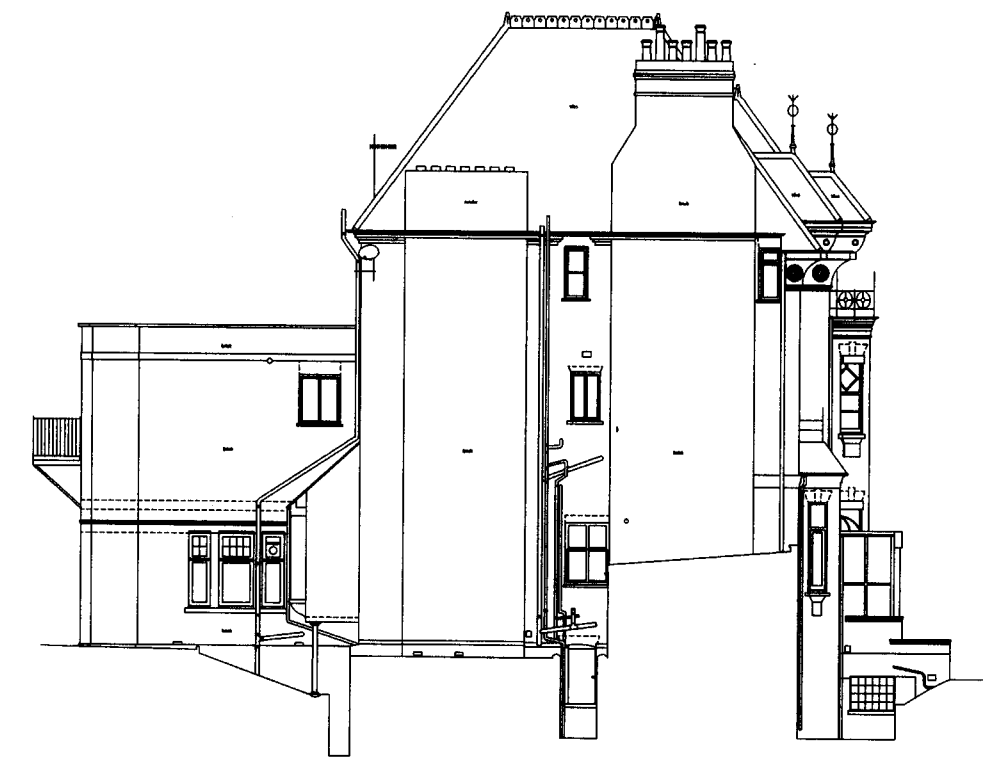


THE CHARLTON BROWN PARTNERSHIP  
ARCHITECTS  
The Old Chapel Shepherds Walk Hampstead London NW3 8JE T 020 7794 1234 F 020 7435 8085 E [office@charltonbrown.com](mailto:office@charltonbrown.com)  
CONVERSION & EXTENSION  
EXISTING  
FLAT No 8, DAPHNE COURT, No 56 FITZJOHN'S AVENUE, AP/1142-2  
Date SEPTEMBER 10 Scale 1:100 ©A2 This drawing is copyright Revisions

RECEIVED 13 APR 2011



SOUTH ELEVATION  
(SIDE ELEVATION No 56)  
(A.O.D 77.00m)

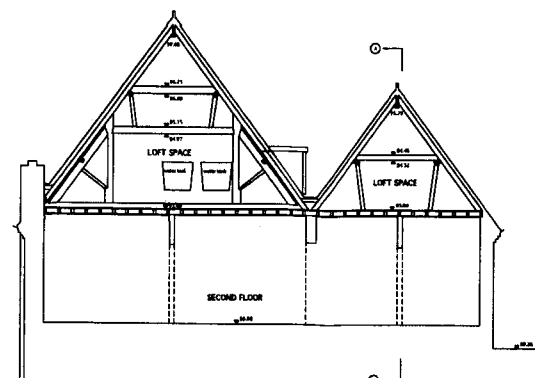


NORTH ELEVATION  
(SIDE ELEVATION No 56)  
(A.O.D 77.00m)

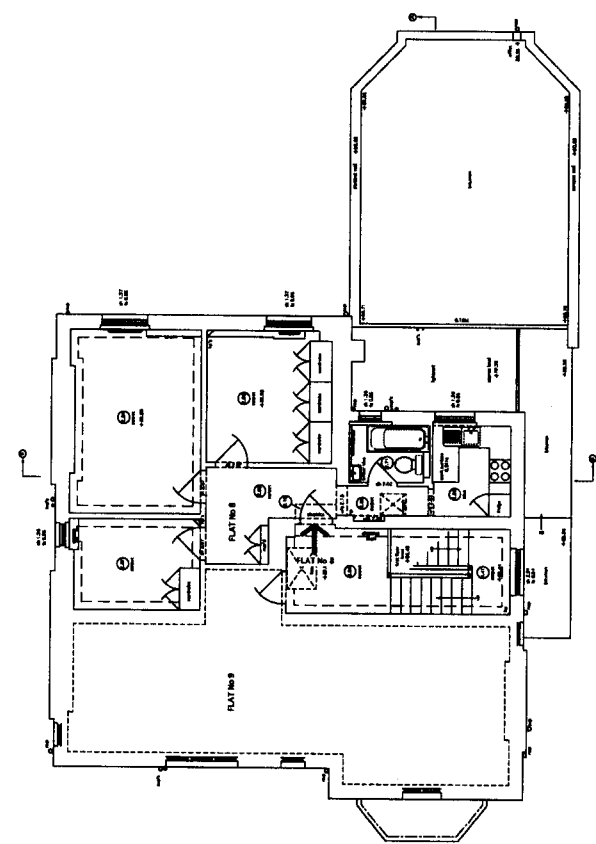


THE CHARLTON BROWN PARTNERSHIP  
ARCHITECTS  
The Old Chapel, Shepherds Walk, Hemstead, London NW3 5AJ. T 020 7794 1234 F 020 7435 5045 E office@charltonbrown.com  
CONVERSION & EXTENSION  
EXISTING  
FLAT No 8, DAPHNE COURT, No 56 FITZJOHN'S AVENUE, AP/1142-3  
Date: SEPTEMBER 10 Scale: 1:100 0A2 This drawing is copyright Revisions

RECEIVED 13 APR 2011

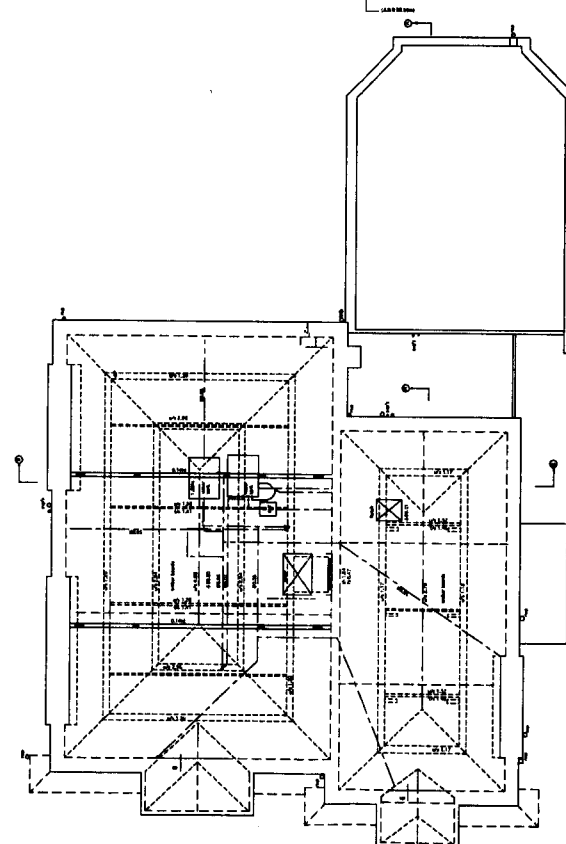


SECTION B-B

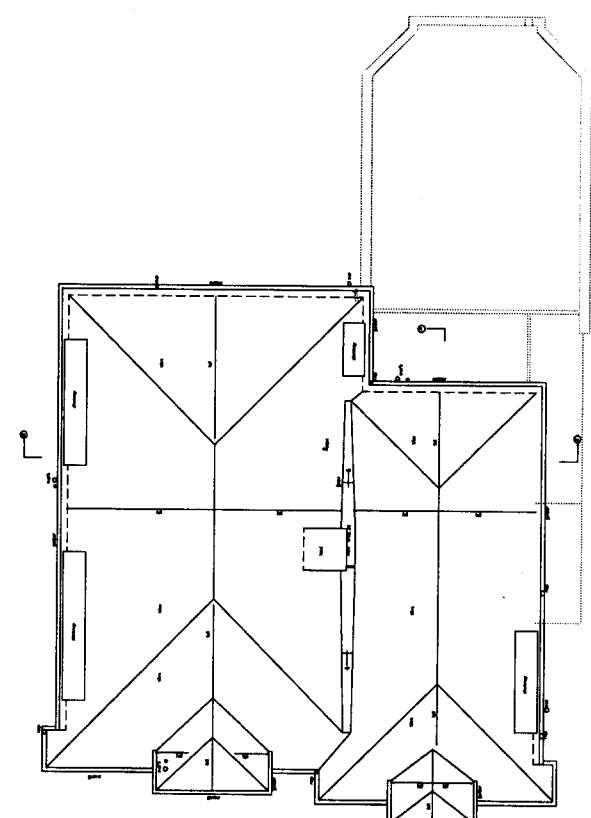


FITZJOHN'S AVENUE

SECOND FLOOR PLAN



ATTIC FLOOR PLAN



EXISTING PLAN



THE CHARLTON BROWN PARTNERSHIP  
ARCHITECTS

The Old Chapel, Shepherds Walk, Hampstead, London, NW3 5LE, T: 020 7794 1234, F: 020 7435 5065, E: office@charltonbrown.com

CONVERSION & EXTENSION  
EXISTING

FLAT No 8, DAPHNE COURT, No 56 FITZJOHN'S AVENUE, AP/1142-4

Date: SEPTEMBER '10 Scale: 1:100 @A2 This drawing is copyright. Revisions

RECEIVED 13 APR 2011



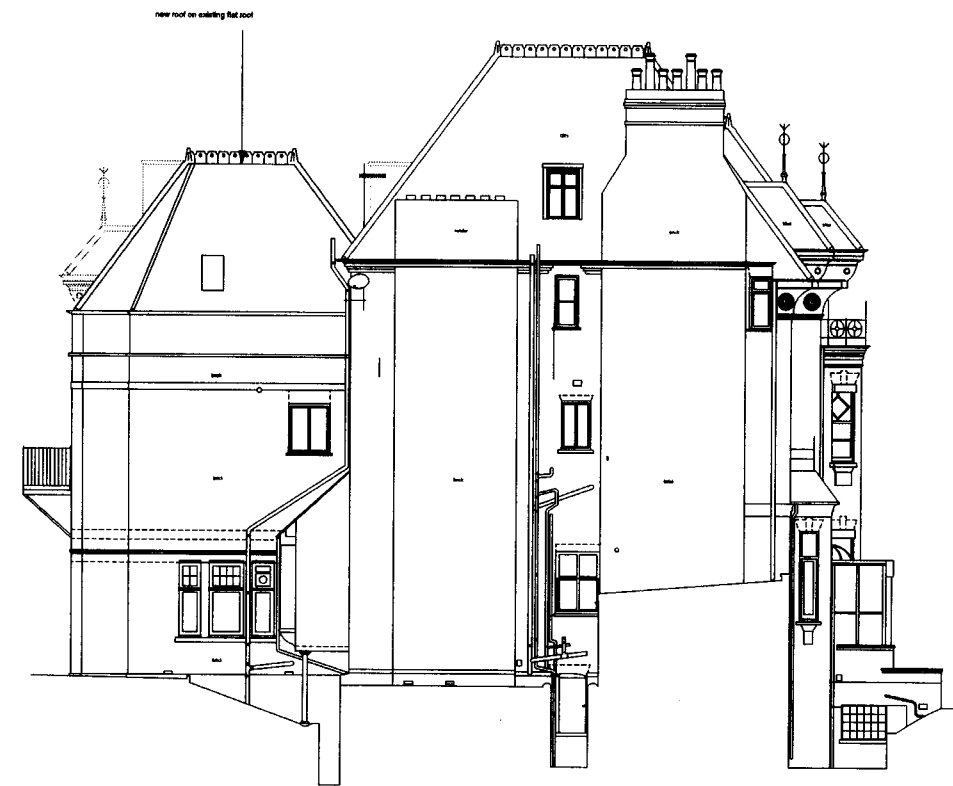
THE CHARLTON BROWN PARTNERSHIP  
ARCHITECTS  
The Old Chapel Shepherds Walk Hempsstead London NW5 5LE T 020 7794 1234 F 020 7435 5085 E cbb@charltonbrown.com  
CONVERSION & EXTENSION  
APPROVED PLANNING DRAWINGS - 2010/5786/P  
FLAT No 8, DAPHNE COURT, No 56 FITZJOHN'S AVENUE, AP/1142-6  
Date SEPTEMBER 10 Scale 1:100 @A2 This drawing is copyright Revisions



RECEIVED 13 APR 2011



SOUTH ELEVATION  
(SIDE ELEVATION No 56)  
(A.O.D 77.00m)



NORTH ELEVATION  
(SIDE ELEVATION No 56)  
(A.O.D 77.00m)



THE CHARLTON BROWN PARTNERSHIP  
ARCHITECTS

The Old Chapel Shepherds Walk Hampstead London NW3 5LE T 020 7794 1234 F 020 7435 5085 E [office@charltonbrown.com](mailto:office@charltonbrown.com)

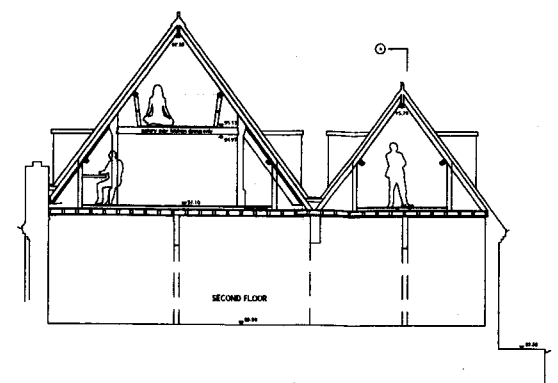
CONVERSION & EXTENSION

[APPROVED PLANNING DRAWINGS - 2010/5786/P]

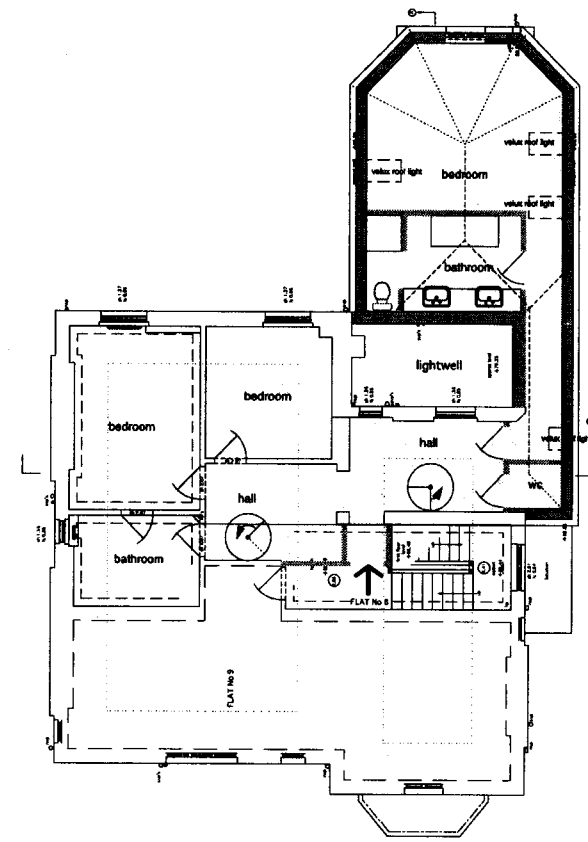
FLAT No 8, DAPHNE COURT, No 56 FITZJOHN'S AVENUE, AP/1142-7

Date: SEPTEMBER 10 Scale: 1:100 @A2 This drawing is copyright Revisions

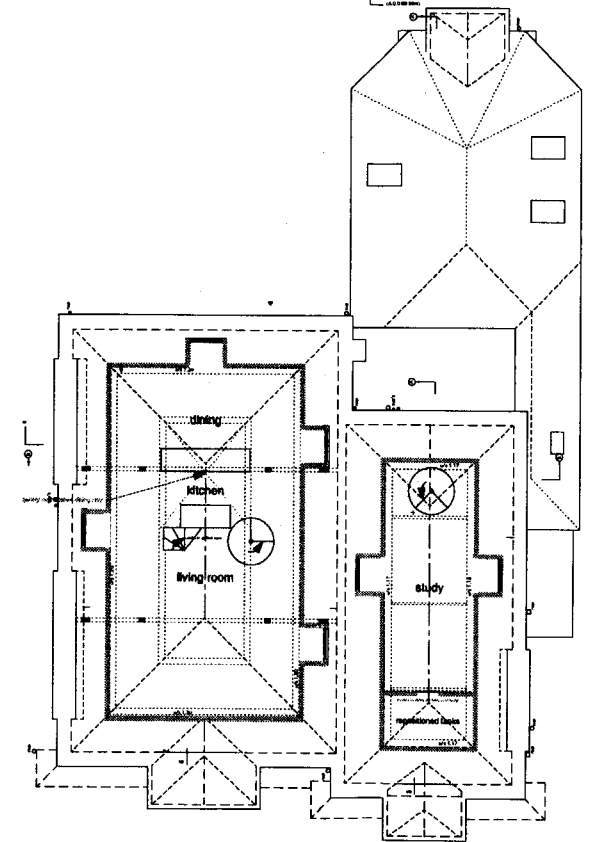
RECEIVED 13 APR 2011



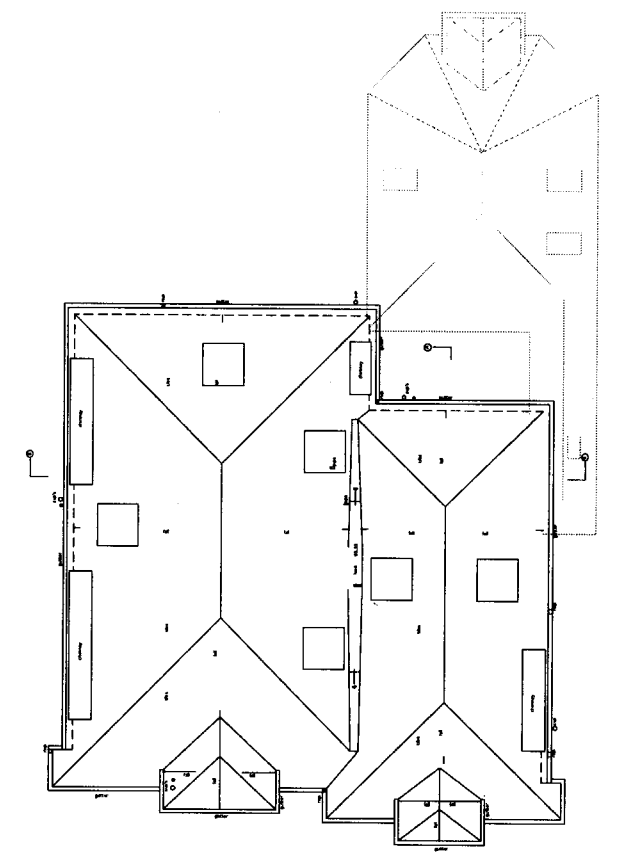
SECTION B-B



SECOND FLOOR PLAN



ATTIC FLOOR PLAN



ROOF PLAN



THE CHARLTON BROWN PARTNERSHIP  
ARCHITECTS

The Old Chapel, Shepherds Walk, Hampstead, London, NW3 5LE, T 020 7794 1234, F 020 7435 5085, E office@charltonbrown.com

CONVERSION & EXTENSION  
[APPROVED PLANNING DRAWINGS - 2010/5786/P]

FLAT No 8, DAPHNE COURT, No 56 FITZJOHN'S AVENUE, AP/1142-8  
Date: SEPTEMBER 10 Scale: 1:100 @A2 This drawing is copyright Revisions