

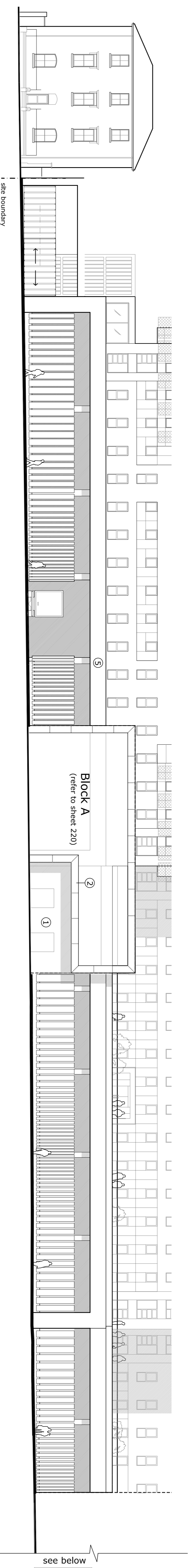
○ Keyplan

Block A (refer to sheet 220)

Block B (refer to sheet 221)

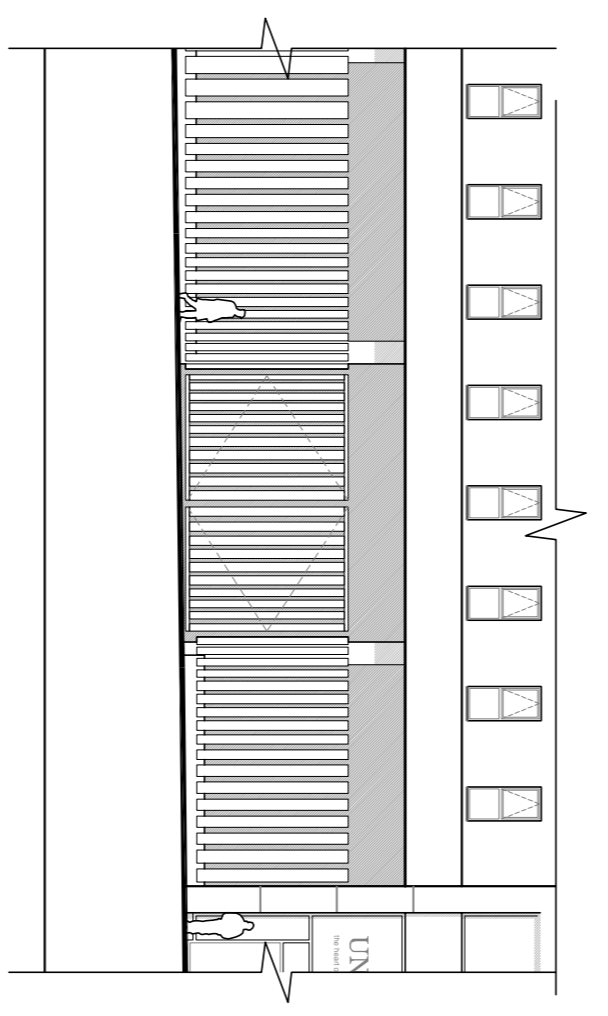
Block C (refer to sheet 222)

Block D (refer to sheet 223)

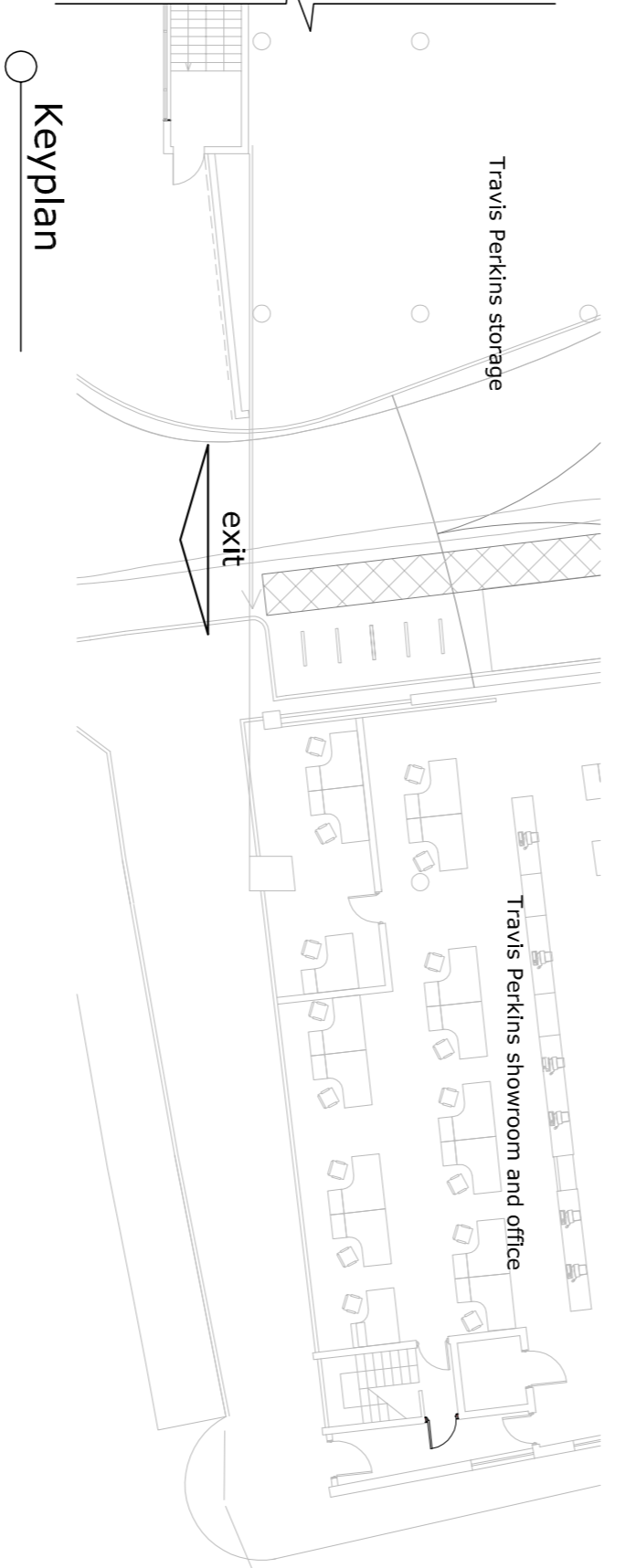


① St Pancras Way - South

see below

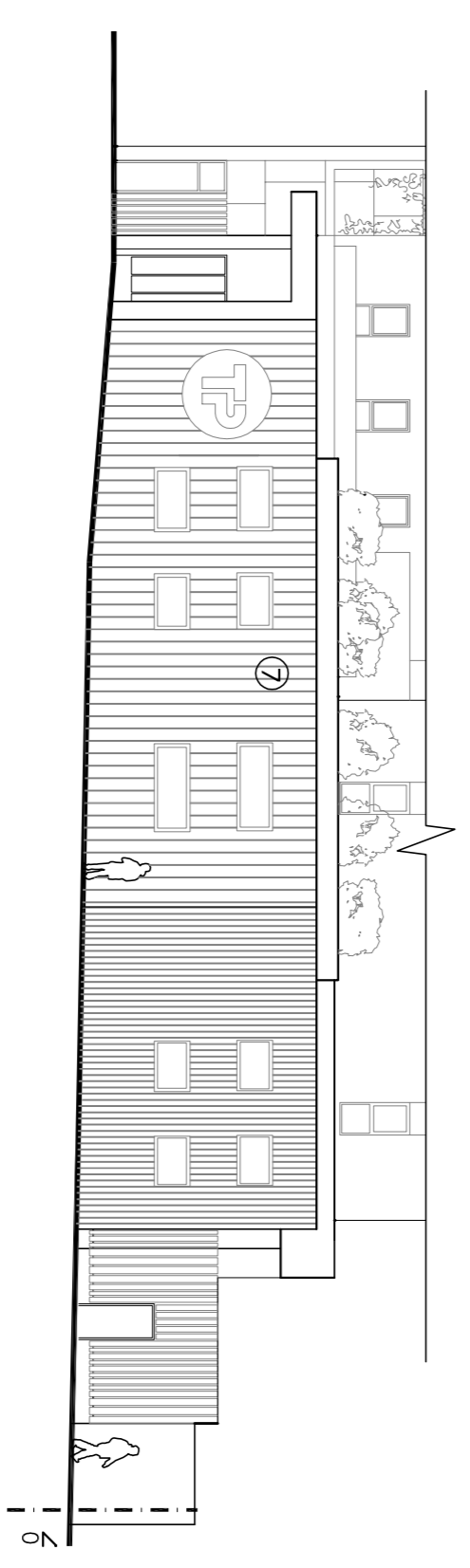


①a closed gates

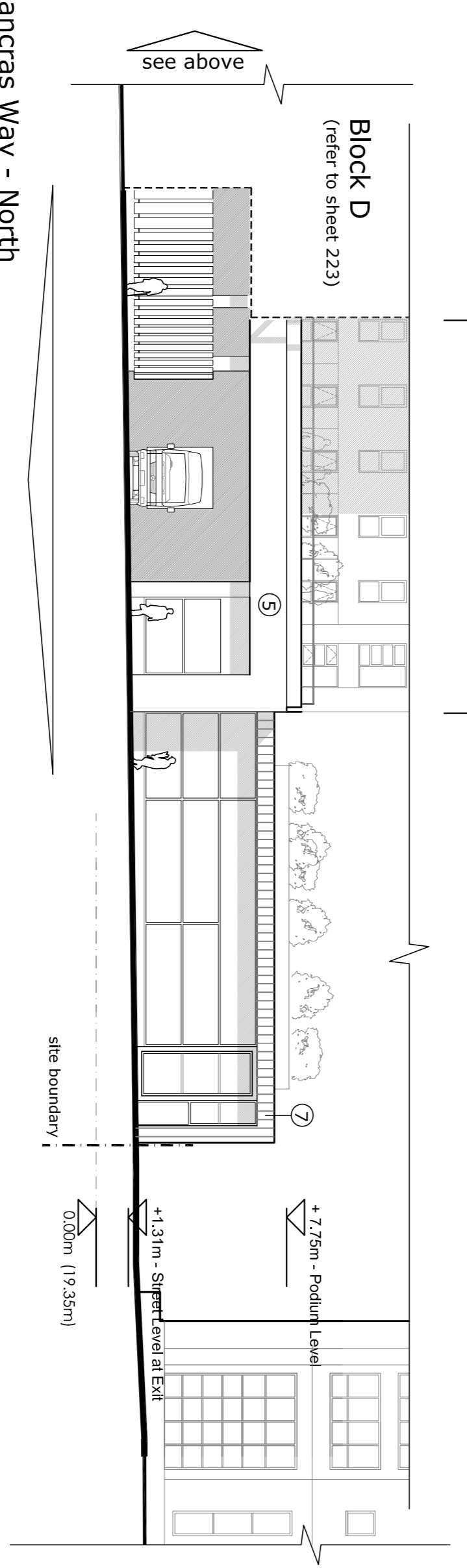


○ Keyplan

Block C (refer to sheet 222)



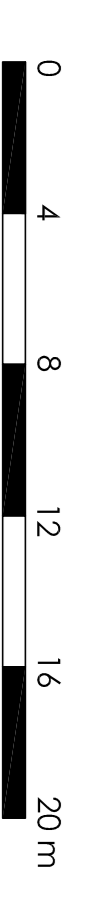
③ Northern end (to College Grove)



② St Pancras Way - North

Block D (refer to sheet 223)

②a closed gate



- Materials schedule:**
- ① Brick to approved sample
 - ② Cladding panels to approved sample
 - ③ Aluminium PC glazing
 - ④ Metal mesh to approved sample
 - ⑤ Fair-faced concrete
 - ⑥ Semi-opaque glass
 - ⑦ Corrugated metal to approved sample

Bellis Cooley | Architects
 Studio 201, 16 Balhams Gardens, London EC4N 7EU
 U203 3178 4481 www.belliscooley.com

Unite PLC - Travis Perkins
 11-13 St Pancras Way
 London NW1

Proposed Elevations -
 Travis Perkins
 Oct 10 RC

DATE	CHECKED
Oct 10 RC	
SCALE	SCALE
1:200 @ A1 & 1:400 @ A3	A1
DRAWING NO	REV
0500 - 224	A