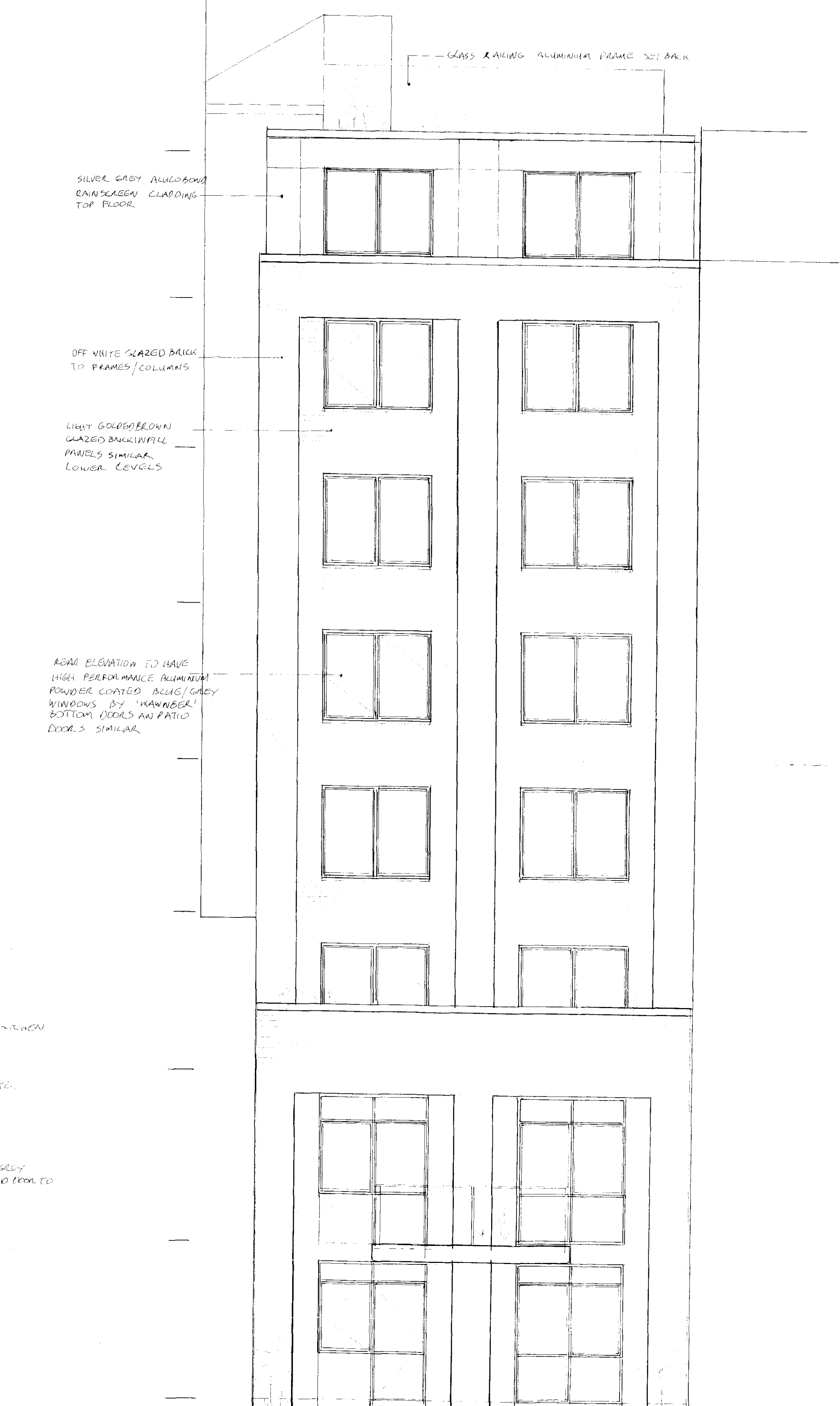


FRONT ELEVATION



REAR ELEVATION

NOTES:

MATERIALS:
 MAIN FRAMES, SIDE PANELS, REAR FACADE, PANELS AND SERVICE SHAFT TO BE FINISHED IN GLAZED BRICKWORK RAINSCREEN CLADDING OF VERY HIGH QUALITY SUCH AS 'IBSTOCK' IN A SATIN HARD WEARING FINISH. MAIN FRAMES TO BE OFF WHITE. SERVICE SHAFT TO BE LIGHT GOLDEN BROWN. PIGMENTED POINTING FOR 'DARK GOLDEN' LOOK.

COLUMNS AT GROUND & BASEMENT AND FRAME TO ENTRANCE TO BE DARK BLUE 'IBSTOCK' GLAZED BRICKWORK FOR A HARD WEARING FINISH.

FRONT BAYS TO HAVE A HIGH QUALITY CURTAIN WALLING SYSTEM SUCH AS 'KAWNEER' IN AN ALUMINUM POWDER COATED MID BLUE/GREY FINISH WITH THERMAL BREAK SYSTEM AND DOUBLE GLAZED HIGH PERFORMANCE GLAZING TO FLOOR LEVEL. TOP HALF TO BE CLEAR AND BOTTOM SECTION OBSCURED. SYSTEM TO HAVE INWARD TILT TURN WINDOWS INTEGRATED IN SAME FINISH. WINDOWS ARRANGED FOR EASE OF CLEANING.

BALCONY BAY TO MATCH IN SAME FINISH TOP HALF OPEN AND BOTTOM HALF OBSCURE GLAZED.

SIMILARLY ENTRANCE DOORS AND OVER, GROUND AND BASEMENT FRONT WINDOWS TO BE IN SAME SYSTEM.

REAR ELEVATION WINDOWS TO UTILISE SAME SYSTEM BLUE/GREY POWDER COATED COLUMNS WITH SOLAR GLAZING.

FRONT HANDRAIL / BALUSTRADE TO BE BRUSHED ALUMINUM AND GLASS INFILL PANELS.

ROOFS FINISHED IN ASPHALTE, BROWN ROOF FINISH TO MAIN ROOF UTILIZING COLLECTED AGGREGATE FROM EXCAVATIONS.

TOP '6th' FLOOR SET BACK TO BE CLAD IN A HIGH PERFORMANCE ALUMINUM COMPOSITE PANEL TO BE RIGID WITH CONCEALED FINISHES SUCH AS 'ALUMINOBOOND' IN A SATIN SILVER GREY FINISH.

PROPOSED DEVELOPMENT:	13 ST CROSS STREET, LONDON, EC1N 8UB	13SC10
PROPOSED ELEVATIONS		
Drawing no: 13SC10/012		
Scale: 1:50 Date: FEB 2011		
ALEXANDER DESIGN & BUILD LTD 43 CRESCENT RISE, N22. 020 8888 5858		