

4 PART ROOF PLAN

REAR EXTENSION AND REAR GARDEN BELOW

10 NO SOLAR PANELS P.V. LAID FLAT ON SUPPORTING FRAME AND ON REFLECTIVE MEMBRANE.

LOW PROFILE 'FLAT' 220 WIP SOLYNDRA SOLAR P.V. HORIZONTAL PANELS MOUNTED ON ROOF

SET BACK OF MANSARD FAÇE BY 1000 MM FROM FRONT FAÇADE TO RETAIN PROMINENCE OF EXISTING PARAPET LINE TO STREET (FOR ACCESS ONLY)

ZINC CLAD INCLINED MANSARD WALL

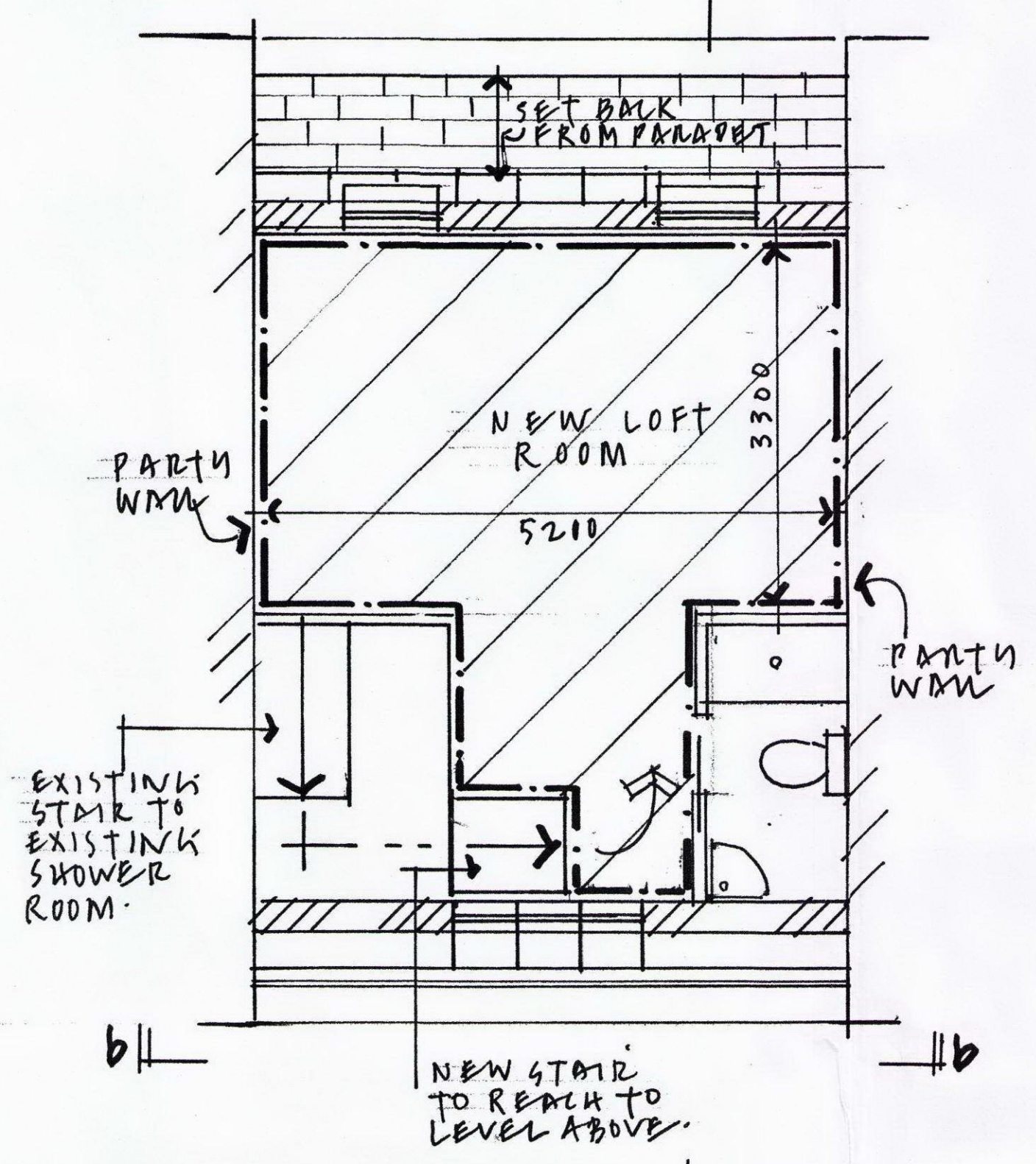
STREET ELEVATION NO CHANGE TO PARAPET LINE

2 NO FLUSH TYPE ROOFLIGHTS SET INTO INCLINED ZINC CLAD FAÇE ROOFLIGHTS TYPE 'NEO' BY THE ROOFLIGHT COMPANY

3 SKETCH SHOWING MANSARD SET BACK FROM STREET

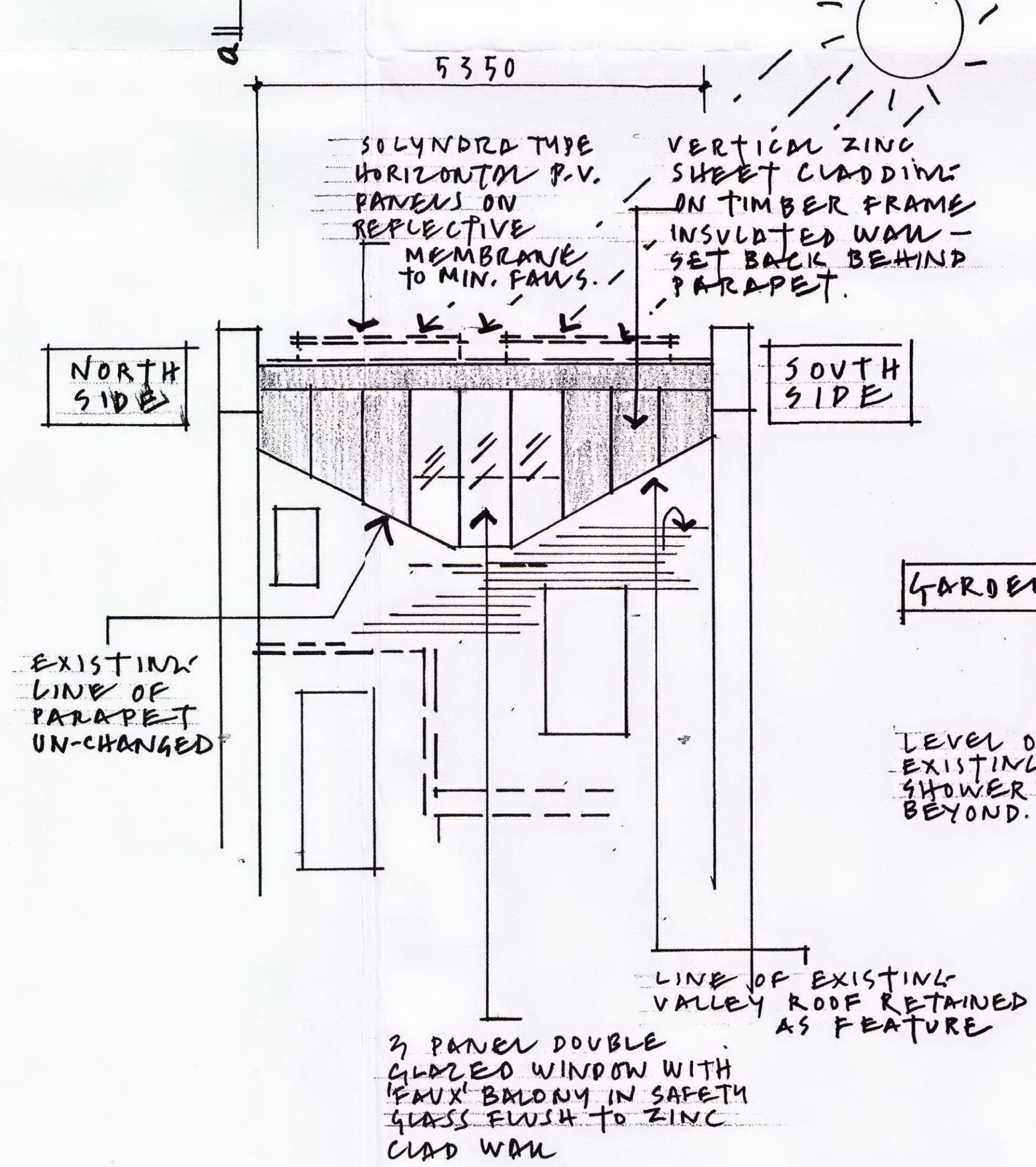
PARTY WALL BRICKWORK EXTENDED TO MANSARD HT.

5 FLOOR PLAN OF NEW LOFT ROOM



NEW STAIR TO REACH TO LEVEL ABOVE

2 PART REAR ELEVATION



EXISTING LINE OF PARAPET UN-CHANGED

LINE OF EXISTING VALLEY ROOF RETAINED AS FEATURE

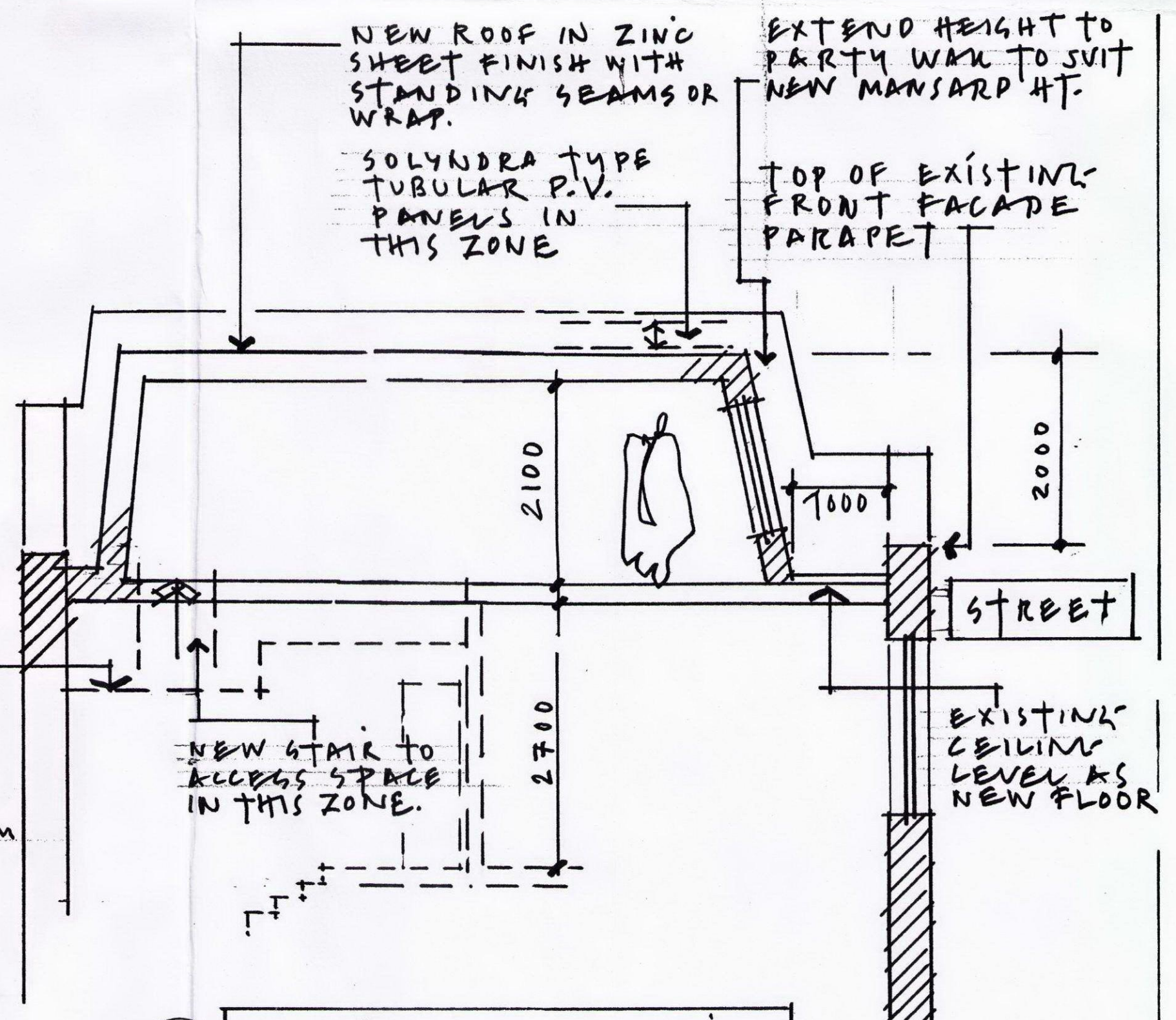
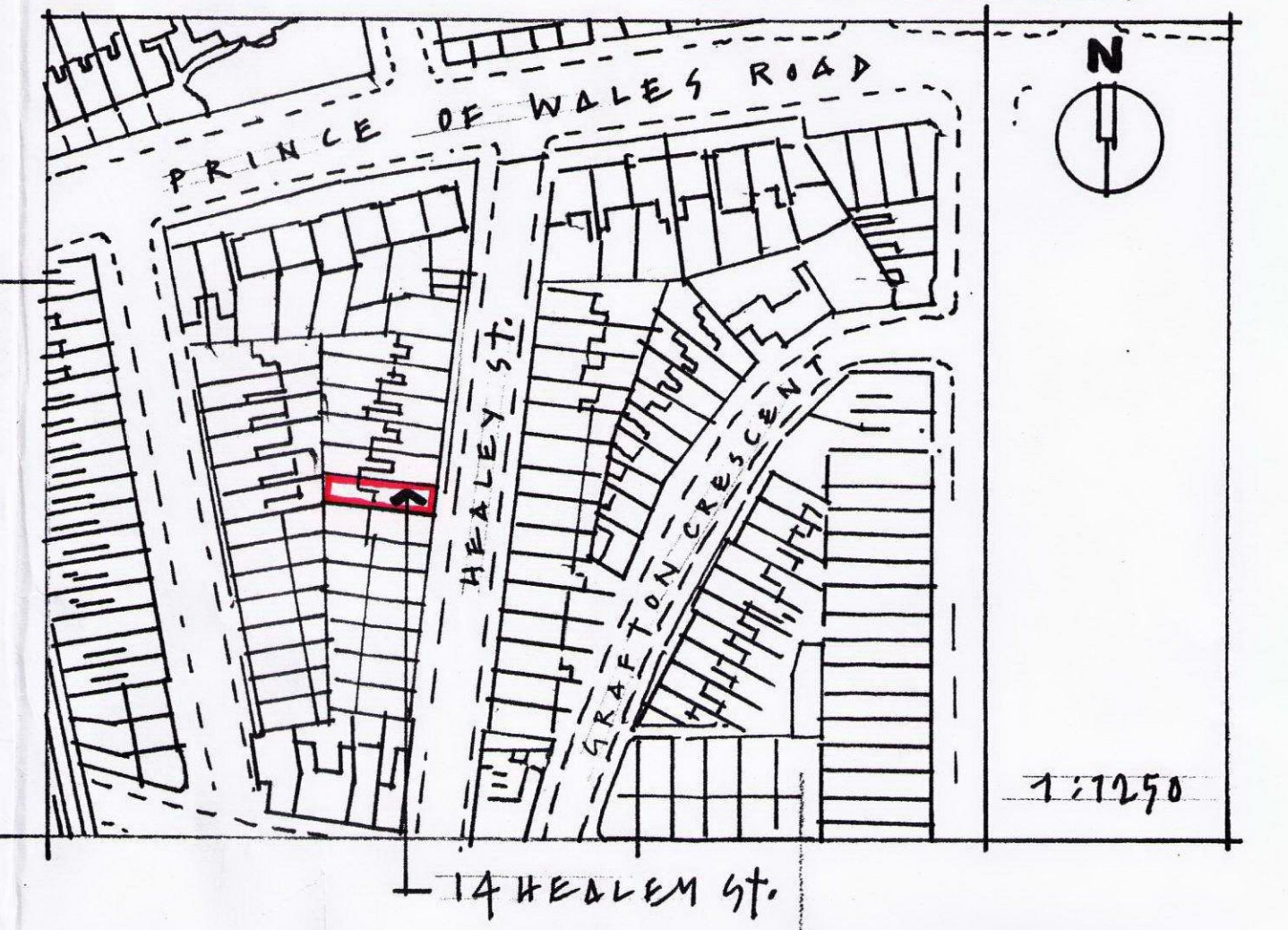
3 PANEL DOUBLE GLAZED WINDOW WITH 'FAUX' BALCONY IN SAFETY GLASS FLUSH TO ZINC CLAD WALL



6 STREET ELEVATION

EXISTING FAÇADE BELOW PARAPET LINE - NO CHANGES

7 SITE LOCATION



1 PART LONG SECTION TAKEN THRU NEW ROOF SPACE

FOR PLANNING PURPOSES ONLY		
10/3	14 HEALEY STREET, NW1	
2011	APPLICANT: J. GEE.	HS.07
	ALAN MORRIS ARCHITECT.	