

INDEX

Drawing Number	Drawing Title	Description
E02014 /00	Index	Index of Drawings
E02014 /01	Location Plan	Scale 1:1250 at A4
E02014 /02	Block Plan	Photo of Site from above
E02014 /03	Roof Plan	Drawing of block from above
E02014 /04	E Elevation	Proposed location of cable routes, Table of cable loom sizes
E02014 /05	N Elevation	Proposed location of Aerial & Dishes
E02014 /06	Power Cable	Proposed power cable route
E02014 /07	Aerial Dish Sizes & Typical Mounting Heights	Measurement of Aerial & Dishes mounting position / height.
E02014 /08	Existing Equipment	View of existing equipment

Form No. SCC 013 SCC International – 1 Fieldings Road, Cheshunt, Herts, EN8 9TL, . Tel: 01992 642255. Website: www.scci.co.uk



Please consider the environment before printing this document – Recycle Wherever Possible



Drawing No.	E02014/00	Site Address:	Fitzjohns Ave 1-15, Fitzjohns Avenue, NW3 5LT		
Date:	31/03/2011	Site Ref:	LBC0297.0	Surveyed By:	C Gibson
Number of Points:	15	System Type	9 Wire IRS Sky Plus	Drawn By:	C Gibson



# Block Plan



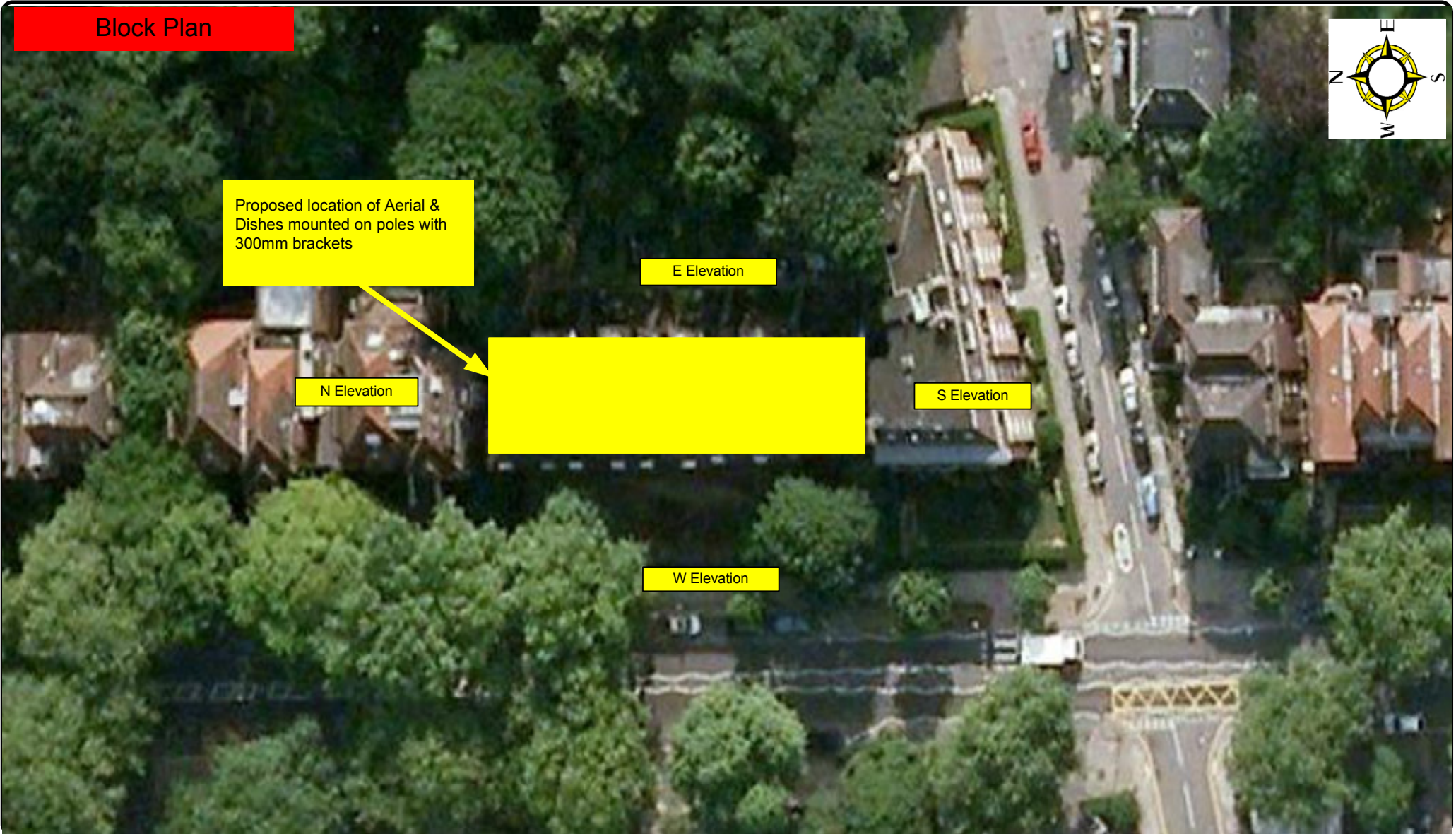
Proposed location of Aerial & Dishes mounted on poles with 300mm brackets

N Elevation

E Elevation

S Elevation

W Elevation



Form No. SCC 013 SCC International – 1 Fieldings Road, Cheshunt, Herts, EN8 9TL, . Tel: 01992 642255. Website: www.scci.co.uk



Please consider the environment before printing this document – Recycle Wherever Possible

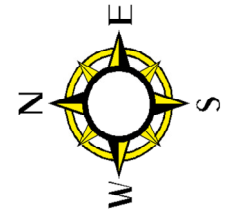


Drawing No.	E02014/02	Site Address:	Fitzjohns Ave 1-15, Fitzjohns Avenue, NW3 5LT		
Date:	31/03/2011	Site Ref:	LBC0297.0	Surveyed By:	C Gibson
Number of Points:	15	System Type	9 Wire IRS Sky Plus	Drawn By:	C Gibson



**Roof Plan**

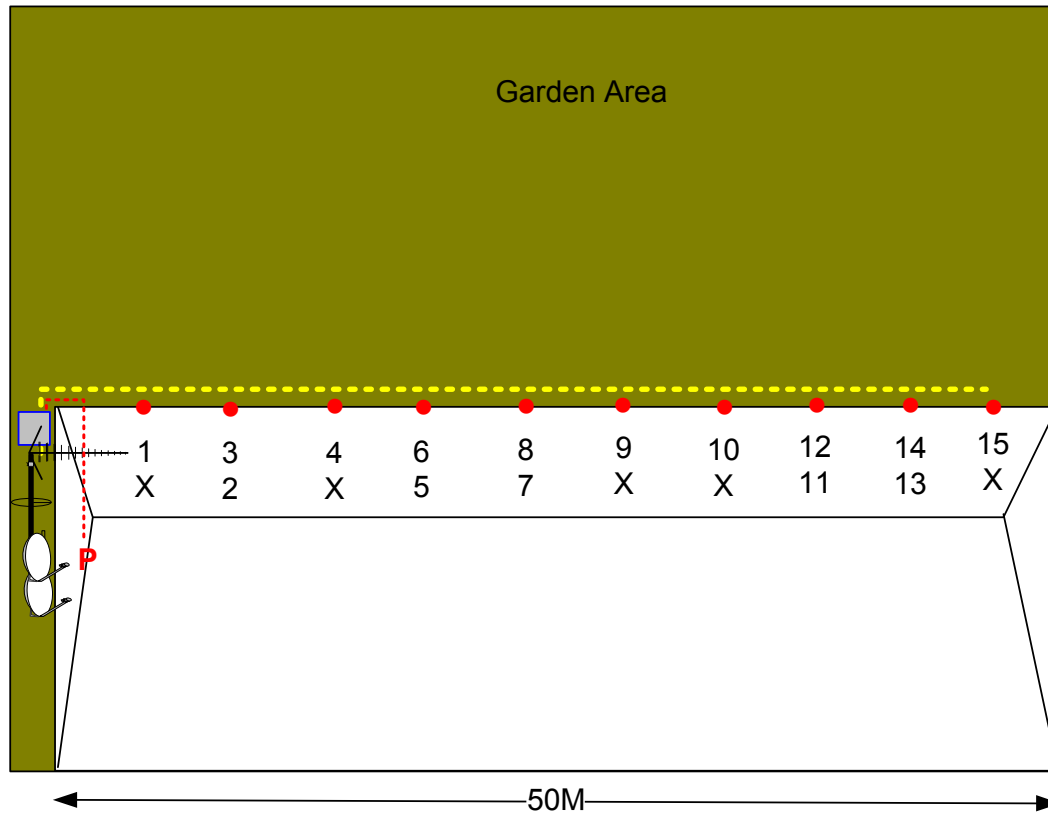
E Elevation



Proposed location of Aerial & Dishes mounted on 450mm Brackets

Garden Area

N Elevation



S Elevation

50M

10M

Fitzjohn's Avenue

W Elevation

Form No. SCC 013 SCC International – 1 Fieldings Road, Cheshunt, Herts, EN8 9TL, . Tel: 01992 642255. Website: www.scci.co.uk



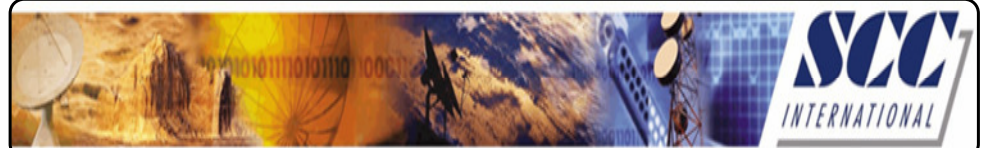
Please consider the environment before printing this document – Recycle Wherever Possible



Drawing No. E02014/03 Site Address: Fitzjohns Ave 1-15, Fitzjohns Avenue, NW3 5LT

Date: 31/03/2011 Site Ref: LBC0297.0 Surveyed By: C Gibson

Number of Points: 15 System Type: 9 Wire IRS Sky Plus Drawn By: C Gibson



Each property will have two cables to lounge position.

**Cable Harness sizes**

2-4 cables = 15mm

6-8 cables = 20mm

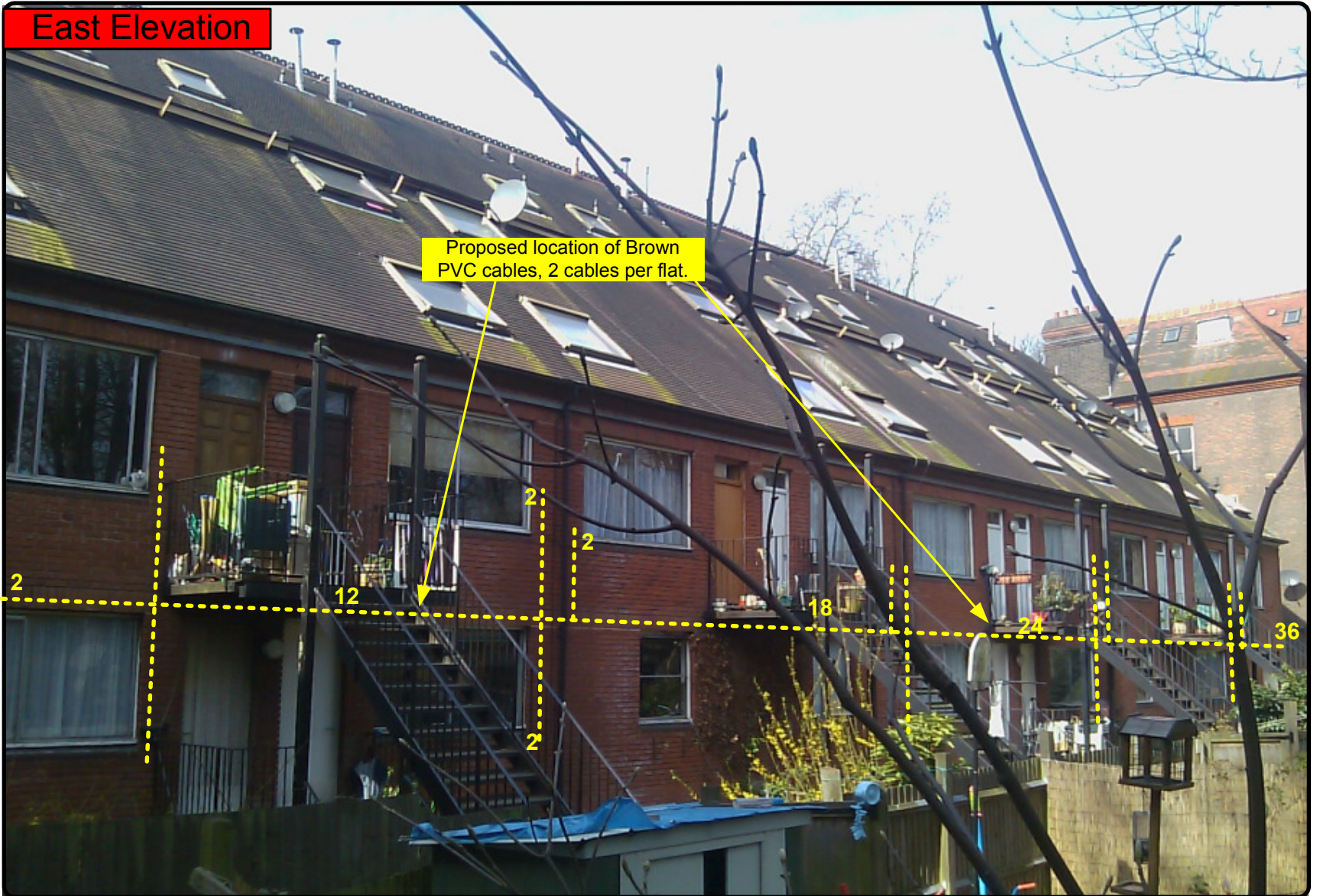
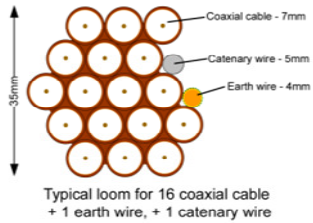
10-14 cables = 30mm

16-18 Cables = 35mm

20 cables = 40mm

40 cables = 65mm

60 cables = 90mm



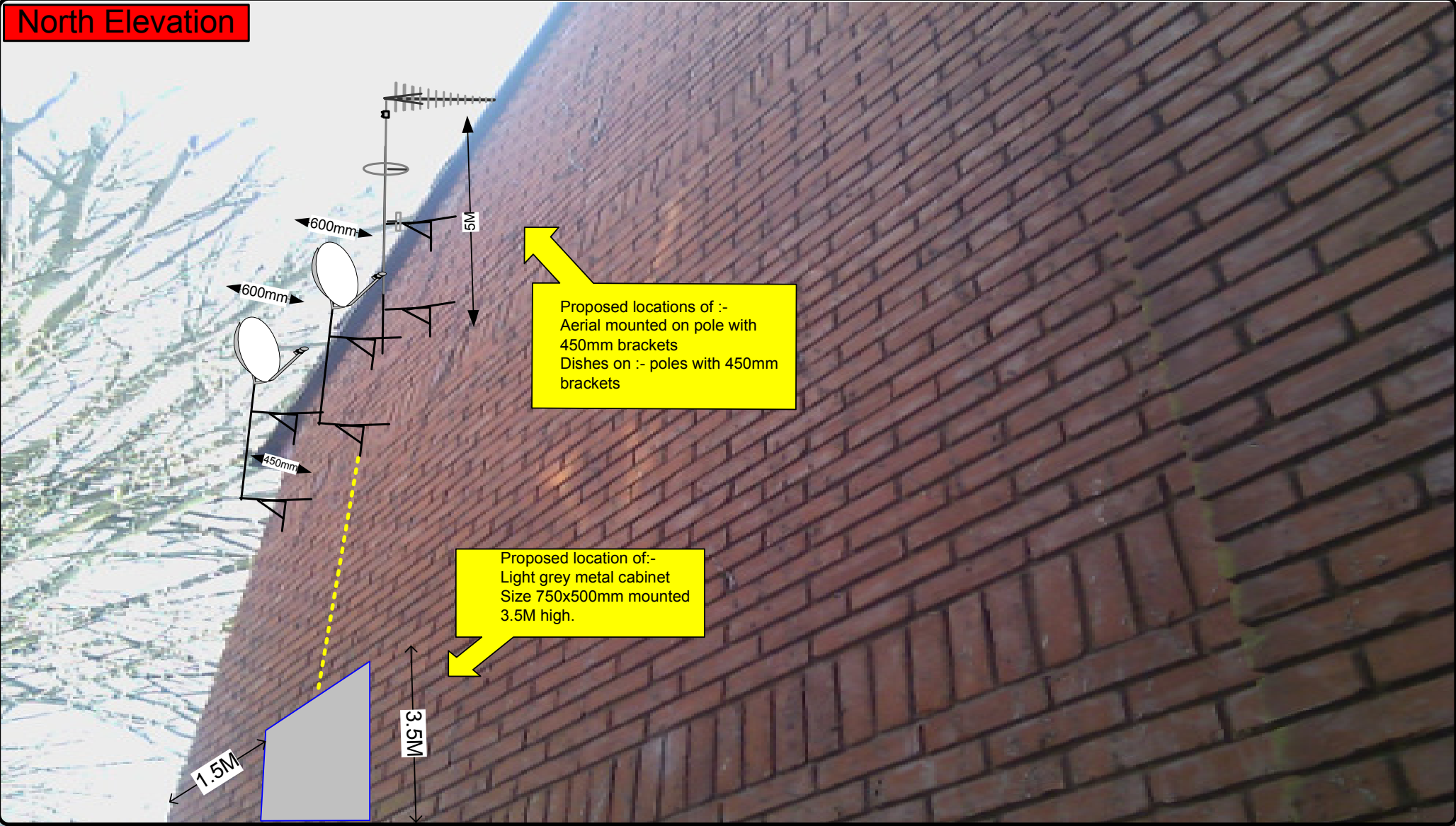
Form No. SCC 013 SCC International – 1 Fieldings Road, Cheshunt, Herts, EN8 9TL, . Tel: 01992 642255. Website: www.scci.co.uk

Please consider the environment before printing this document – Recycle Wherever Possible

Drawing No.	E02014/04	Site Address:	Fitzjohns Ave 1-15, Fitzjohns Avenue, NW3 5LT		
Date:	31/03/2011	Site Ref:	LBC0297.0	Surveyed By:	C Gibson
Number of Points:	15	System Type	9 Wire IRS Sky Plus	Drawn By:	C Gibson



**North Elevation**



Proposed locations of :-  
 Aerial mounted on pole with  
 450mm brackets  
 Dishes on :- poles with 450mm  
 brackets

Proposed location of:-  
 Light grey metal cabinet  
 Size 750x500mm mounted  
 3.5M high.

Form No. SCC 013 SCC International – 1 Fieldings Road, Cheshunt, Herts, EN8 9TL, . Tel: 01992 642255. Website: www.scci.co.uk					
Drawing No.	E02014/05	Site Address:	Fitzjohns Ave 1-15, Fitzjohns Avenue, NW3 5LT		
Date:	31/03/2011	Site Ref:	LBC0297.0	Surveyed By:	C Gibson
Number of Points:	15	System Type	9 Wire IRS Sky Plus	Drawn By:	C Gibson

Please consider the environment before printing this document – Recycle Wherever Possible



# Power Cable

Proposed route for power cable  
to be in White PVC conduit



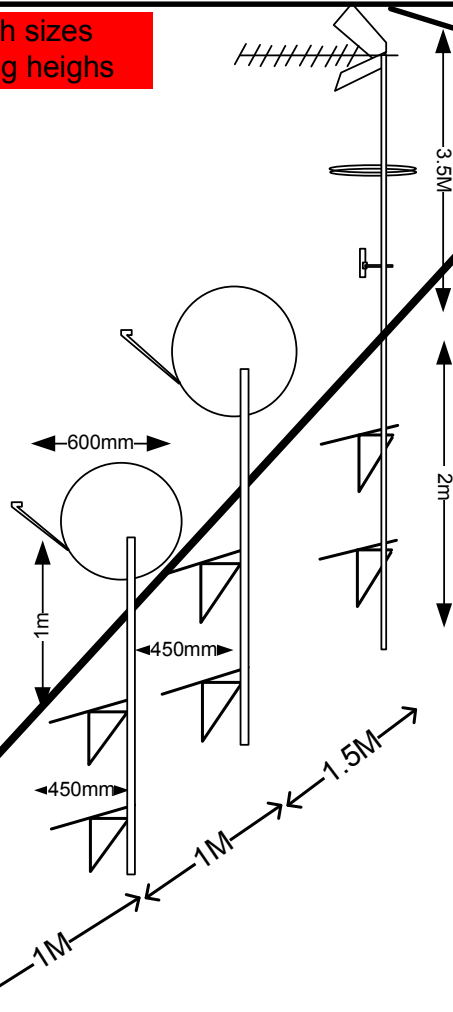
Form No. SCC 013 SCC International – 1 Fieldings Road, Cheshunt, Herts, EN8 9TL, . Tel: 01992 642255. Website: www.scci.co.uk

Please consider the environment before printing this document – Recycle Wherever Possible

Drawing No.	E02014/06	Site Address:	Fitzjohns Ave 1-15, Fitzjohns Avenue, NW3 5LT		
Date:	31/03/2011	Site Ref:	LBC0297.0	Surveyed By:	C Gibson
Number of Points:	15	System Type	9 Wire IRS Sky Plus	Drawn By:	C Gibson



Aerial and Dish sizes  
Typical mounting heights



Proposed location of Aerial  
& Dishes mounted on  
450mm Brackets

Form No. SCC 013 SCC International – 1 Fieldings Road, Cheshunt, Herts, EN8 9TL, . Tel: 01992 642255. Website: www.scci.co.uk



Please consider the environment before printing this document – Recycle Wherever Possible



Drawing No.	E02014/07	Site Address:	Fitzjohns Ave 1-15, Fitzjohns Avenue, NW3 5LT		
Date:	31/03/2011	Site Ref:	LBC0297.0	Surveyed By:	C Gibson
Number of Points:	15	System Type	9 Wire IRS Sky Plus	Drawn By:	C Gibson



# Existing Items



Existing Equipment

Form No. SCC013 SCC International – 1 Fieldings Road, Cheshunt, Herts, EN8 9TL, . Tel: 01992 642255. Website: www.scci.co.uk



Please consider the environment before printing this document – Recycle Wherever Possible



Drawing No.	E02014/08	Site Address:	Fitzjohns Ave 1-15, Fitzjohns Avenue, NW3 5LT		
Date:	31/03/2011	Site Ref:	LBC0297.0	Surveyed By:	C Gibson
Number of Points:	15	System Type	9 Wire IRS Sky Plus	Drawn By:	C Gibson

