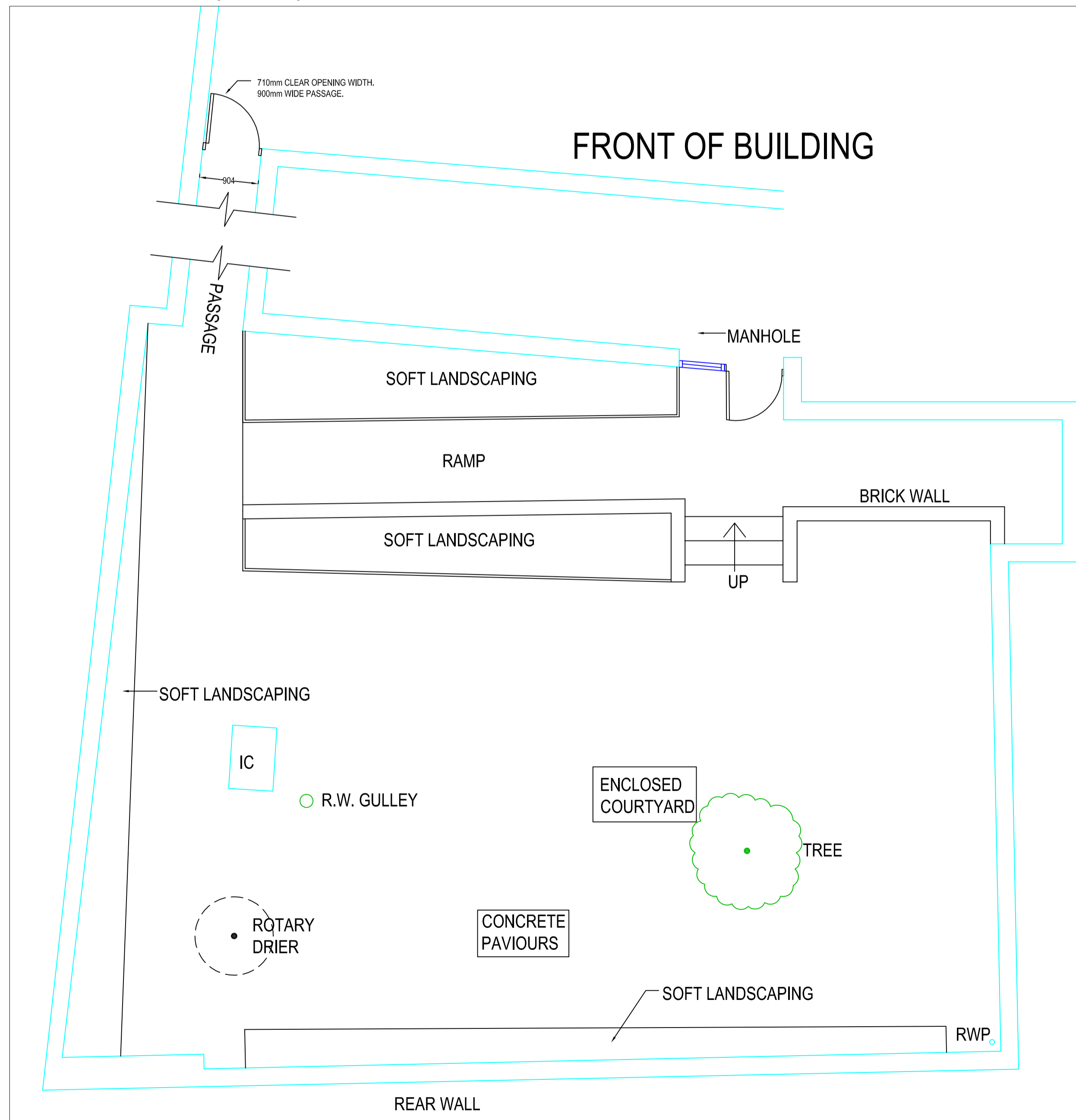
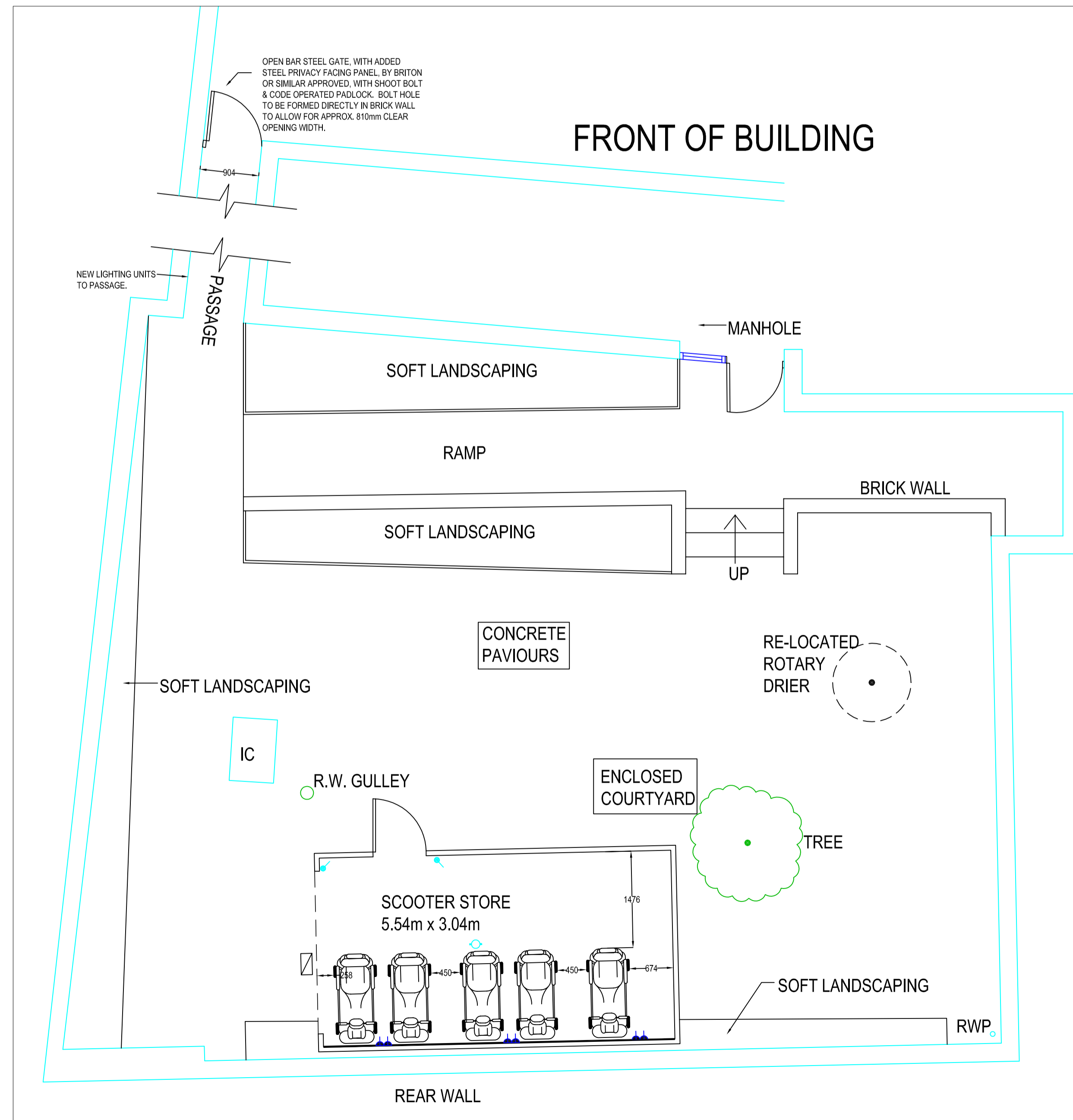


SITE PLAN (NTS)



EXISTING LAYOUT



PROPOSED LAYOUT

REV	DATE	DESCRIPTION
A	10.01.11	Passage width amended & proposed gate & passage lighting added. Text 'option 3' changed to 'option 2'
B	30.01.11	Options 2 & 3 removed. Personnel door added.
C	09.05.11	Removal of erroneous manhole text.

**KEY**

- IC Inspection Chamber
- Single SSO
- Light switch
- Flourescent light

**NOTES**

1. Large indicative scooter sizes (1,365mm x 625mm) have been used to allow a safety margin.
2. All pre-fabricated scooter stores are provided with integral power outlets.
3. To ensure access of scooter through restricted passage width / door opening, management of scooter size will be required.



Arcus Consulting LLP  
 Leeds 0113 281 5350 Manchester 0161 955 3222 Sheffield 0114 227 0002  
 Liverpool 0151 708 1080 Newcastle 0191 272 5781 info@arcus.uk.com  
 www.arcus.uk.com

Client  
 English Churches Housing Group

Project  
 Scooter Stores  
 Spring Court, London NW6 2QT

Title  
 Existing & Proposed Layouts

Scale @ A1	Date	Stage
1:50	October 2010	SK
Job No 1839	Drawing No 1839/55/01	Rev C
Drawn LC	Approved PG	

This drawing is the copyright of Arcus. Contractors must check all dimensions on site. Do not scale the drawings. Only figured dimensions are to be worked to.