

- ⊙ Boiler Flue Terminal
- ▬ Kitchen/Bathroom extract
- || Rain water pipe  
rwp
- ⌋ Soil Vent Pipe Terminal
- # Wall Light
- ≡ TV Aerial

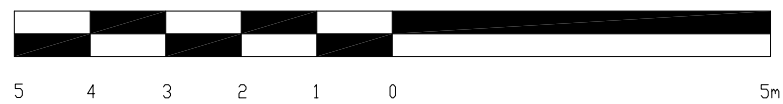


South Elevation

Boundary line

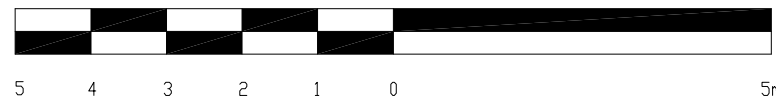
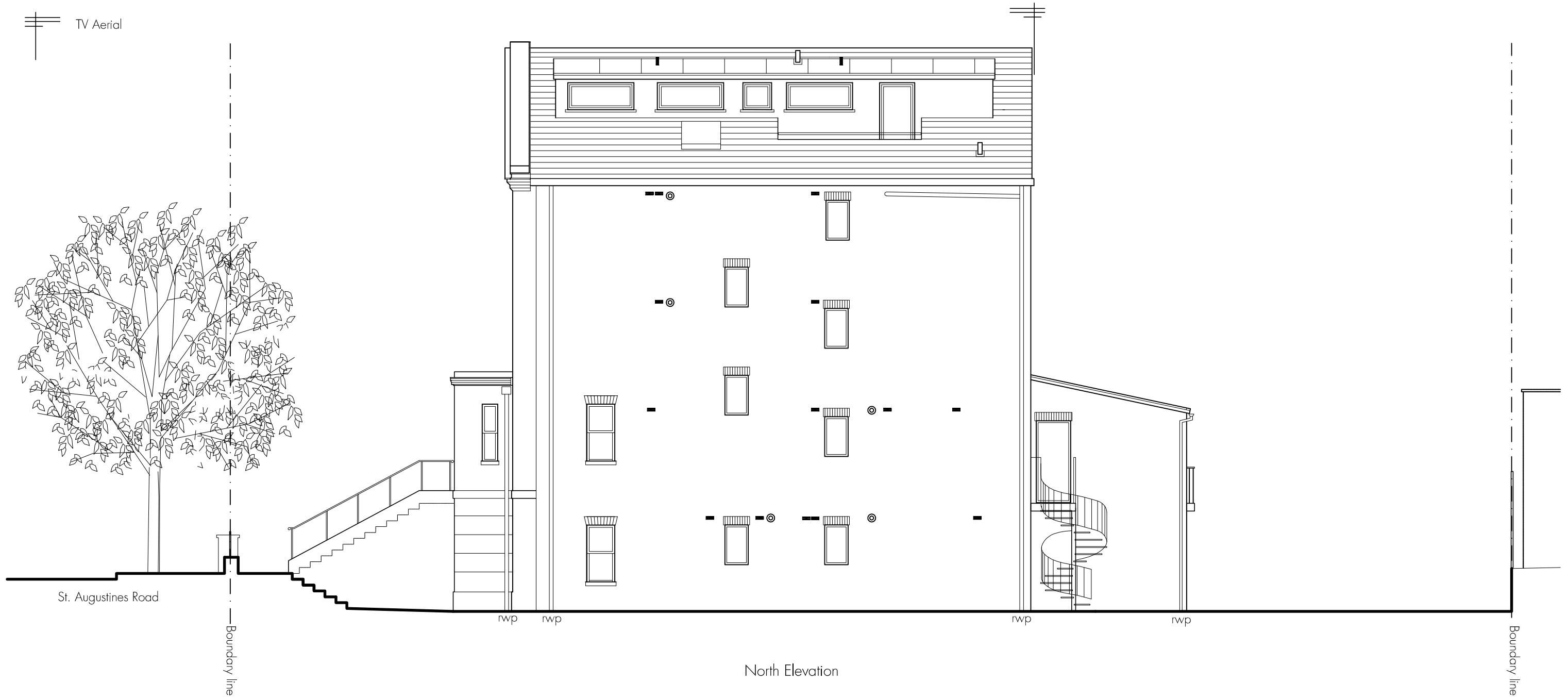
**tasou**  
 associates architects + structural engineers

4 Amwell Street, London, EC1R 1UG T:020 7713 7070 F:020 7713 7071 E:tasou@tasou.co.uk



project	3 St Augustine's Road, London, NW1 9RL		
dwg title	Side Elevation Indicating Proposed Pipes, Flues, etc		
job no.	1283	dwg no.	PP/104 rev.
date	May 2011	scale @ A3	1:100

- ⊙ Boiler Flue Terminal
- Kitchen/Bathroom extract
- || Rain water pipe  
rwp
- ⌋ Soil Vent Pipe Terminal
- ⊞ Wall Light
- ≡ TV Aerial



**tasou**  
 associates architects + structural engineers

4 Amwell Street, London, EC1R 1UG T:020 7713 7070 F:020 7713 7071 E:tasou@tasou.co.uk

project	3 St Augustine's Road, London, NW1 9RL		
drwg title	Side Elevation Indicating Proposed Pipes, Flues, etc		
job no.	1283	drwg no.	PP/105
date	May 2011	scale @ A3	1:100



**tasou**  
 associates architects + structural engineers  
 4 Amwell Street, London, EC1R 1UG T:020 7713 7070 F:020 7713 7071 E:tasou@tasou.co.uk



project	3 St Augustine's Road, London, NW1 9RL		
dwg title	Rear Elevation Indicating Proposed Pipes, Flues, etc		
job no.	1283	dwg no.	PP/106
date	May 2011	scale @ A3	1:100

■ Kitchen/Bathroom extract

|| Rain water pipe  
rwp

⌋ Soil Vent Pipe Terminal

# Wall Light

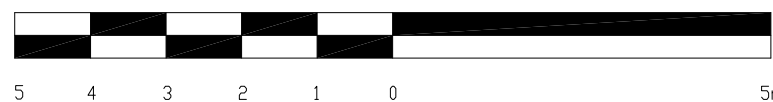
≡ TV Aerial

≡≡≡ TV Aerial beyond  
(mounted on rear elevation)



Front Elevation

Existing properties at No.5 & No.7



tasou  
associates architects + structural engineers

4 Amwell Street, London, EC1R 1UG T:020 7713 7070 F:020 7713 7071 E:tasou@tasou.co.uk

project	3 St Augustine's Road, London, NW1 9RL		
dwg title	Front Elevation Indicating Proposed Pipes, Flues, etc		
job no.	1283	dwg no.	PP/107 rev.
date	May 2011	scale @ A3	1:100