

Modern brickwork has large colour differential from original bricks beneath

All windows at 2nd and 3rd floor are modern single-glazed softwood sashes installed as part of the work in 2000.

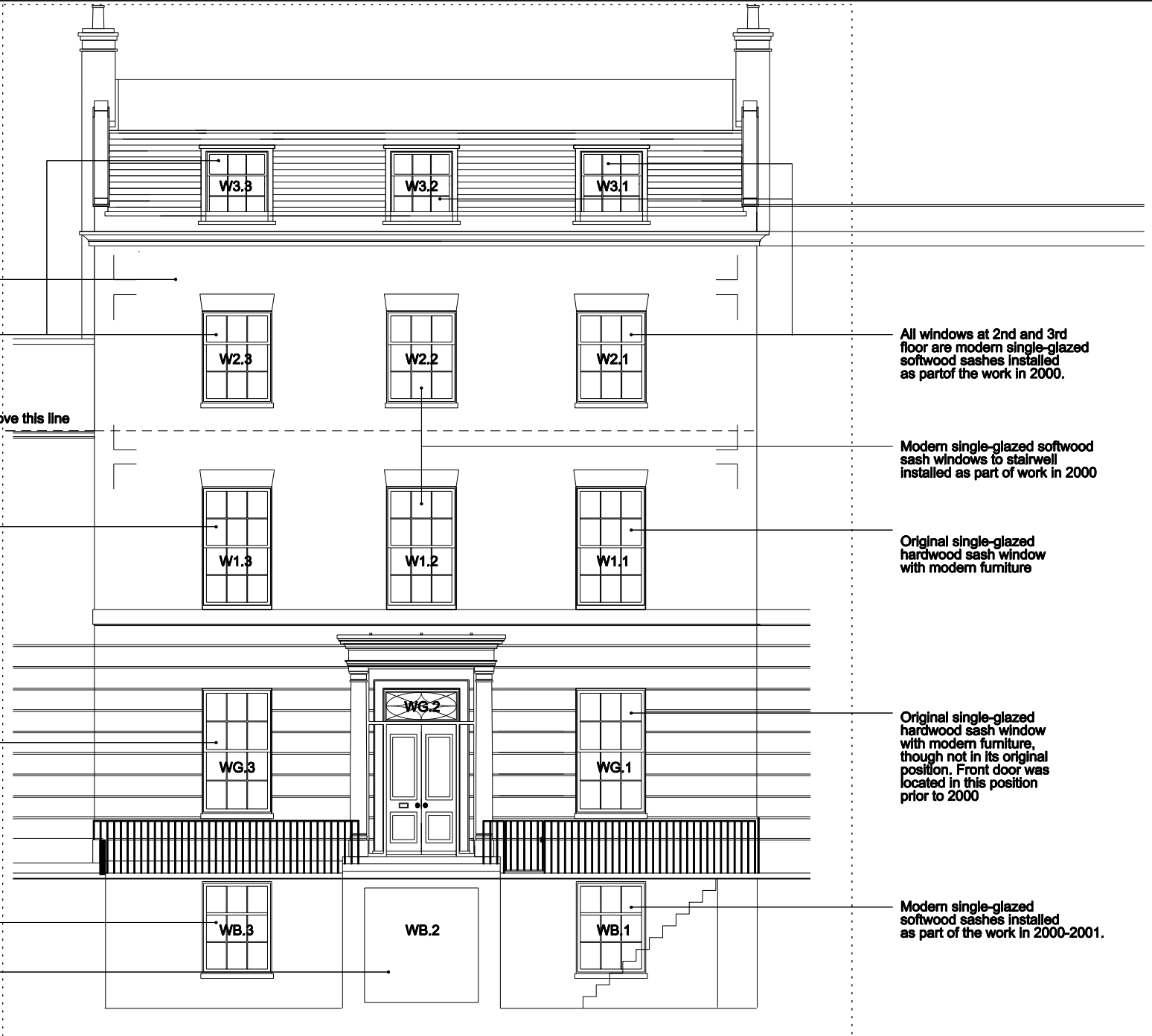
Modern brickwork above this line

Modern double-glazed softwood sashes with slimlite double-glazed panels. Assumed to be installed prior to the work in 2000.

Modern double-glazed softwood sashes with slimlite double-glazed panels. Assumed to be installed prior to the work in 2000.

Modern single-glazed softwood sashes installed as part of the work in 2000-2001.

Modern single-glazed door and flanking windows to basement door installed in 2000-2001



All windows at 2nd and 3rd floor are modern single-glazed softwood sashes installed as part of the work in 2000.

Modern single-glazed softwood sash windows to stairwell installed as part of work in 2000

Original single-glazed hardwood sash window with modern furniture

Original single-glazed hardwood sash window with modern furniture, though not in its original position. Front door was located in this position prior to 2000

Modern single-glazed softwood sashes installed as part of the work in 2000-2001.

Modern brickwork has large colour differential from original bricks beneath

Windows at 2nd floor are modern single-glazed softwood sashes installed as part of the work in 2000.

Modern brickwork above this line

Modern single-glazed softwood fixed panels.

Assumed to be original hardwood french doors
Assumed to be original hardwood frames and mullions

Assumed to be original window frame and sash mullions.

Sashes have been blocked.

Modern single-glazed french doors were installed in lieu of central sash when the terrace was raised to internal ground level.

Modern single-glazed softwood french doors with fixed glazed side panels installed as part of the work in 2001. Proportions are similar to window above but frames are much larger

Windows at 3rd floor are modern single-glazed softwood casements installed as part of the work in 2000.

Modern french door and fan light over assumed to be installed with the french door to the living room and the modern extension beneath.

Modern double glazed sash windows and french doors. Assumed to be installed at the same time as the double glazed windows to the front prior to work in 2000



P2 07.06.11 REVISION SHOWING DOUBLE GLAZING PROPOSALS

EXISTING REAR ELEVATION
9, THE GROVE, LONDON N6 - FOR D J LAW

RICHARD KEEP ARCHITECTS 107 QUEENS CRESCENT LONDON NW5 4EY 0207 428 9353 info@richardkeep.com
© all information remains copyright of architect

JOB: 122

1:100 @ A4
1:50 @ A2

07.06.11

1115 P2

Existing modern brickwork to be tinted to colour match the original brickwork beneath. Repair to existing damaged pointing using lime mortar to match existing.



The following windows are to be replaced with hardwood sashes to match existing with 'slimlite' double glazed units:

- WB.1
- WB.2
- WB.3
- WG.3
- W1.2
- W1.3
- W2.1
- W2.2
- W2.3
- W3.1
- W3.2
- W3.3

Original single-glazed hardwood sash window to be retained

Original single-glazed hardwood sash window to be retained

P2 07.06.11 REVISION SHOWING DOUBLE GLAZING PROPOSALS

PROPOSED FRONT ELEVATION
9, THE GROVE, LONDON N6 - FOR D J LAW

RICHARD KEEP ARCHITECTS 107 QUEENS CRESCENT LONDON NW5 4EY 0207 428 9353 info@richardkeep.com
© all information remains copyright of architect

JOB: 122

1:100 @ A4
1:50 @ A2

07.06.11

1214 P2