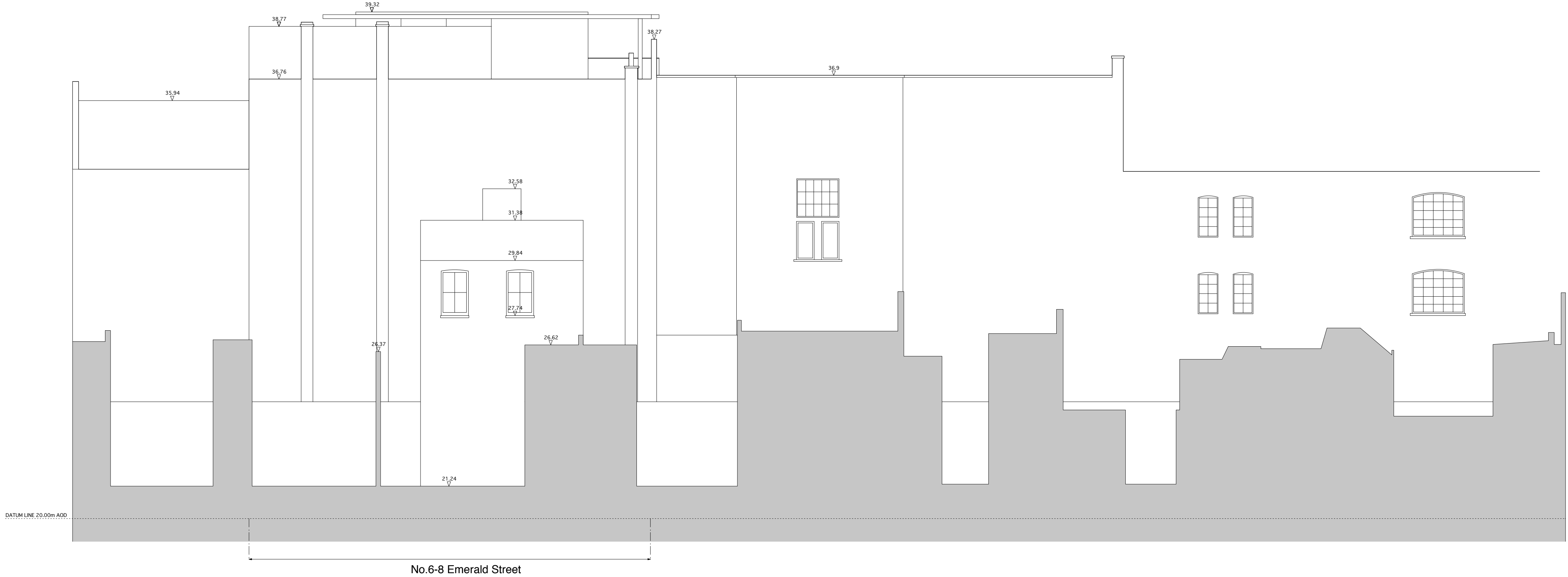


West Elevation - Front facade of No. 6-8 Emerald Street  
As proposed



East Elevation - Rear facade of No. 6-8 Emerald Street  
As proposed

Do not scale drawings  
All dimensions are in millimetres unless stated otherwise  
Use figured dimensions only and report any discrepancies in writing to the architect

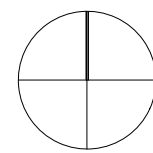
Specific key and notes

- 1 Full height windows
- 2 Flat roof
- 3 External space
- 4 Glass balustrade
- 5 Timber cladding
- 6 Main entrance
- 7 Existing footpath with 1:56 slope to common main entrance
- 8 Existing windows

Revision P2



Key plan and north key



Rev	Description	Drawn	Date
P2	Planning	KM	03.06.2011
P1	Planning	PB	06.05.2011
Rev	Description	Drawn	Date

**6-8 Emerald Street**  
Proposed Elevations  
Status: Planning  
Scale 1: 100  
May 2011

Draw N° 180/GA-02	Rev P2
Drawn by PB	Authorised by HB

**HUGHBROUGHTONARCHITECTS**  
41a Beavor Lane London W6 9BL  
T 020 8735 9959 F 020 8563 3891 E info@hbarchitects.co.uk  
© Hugh Broughton Architects Ltd